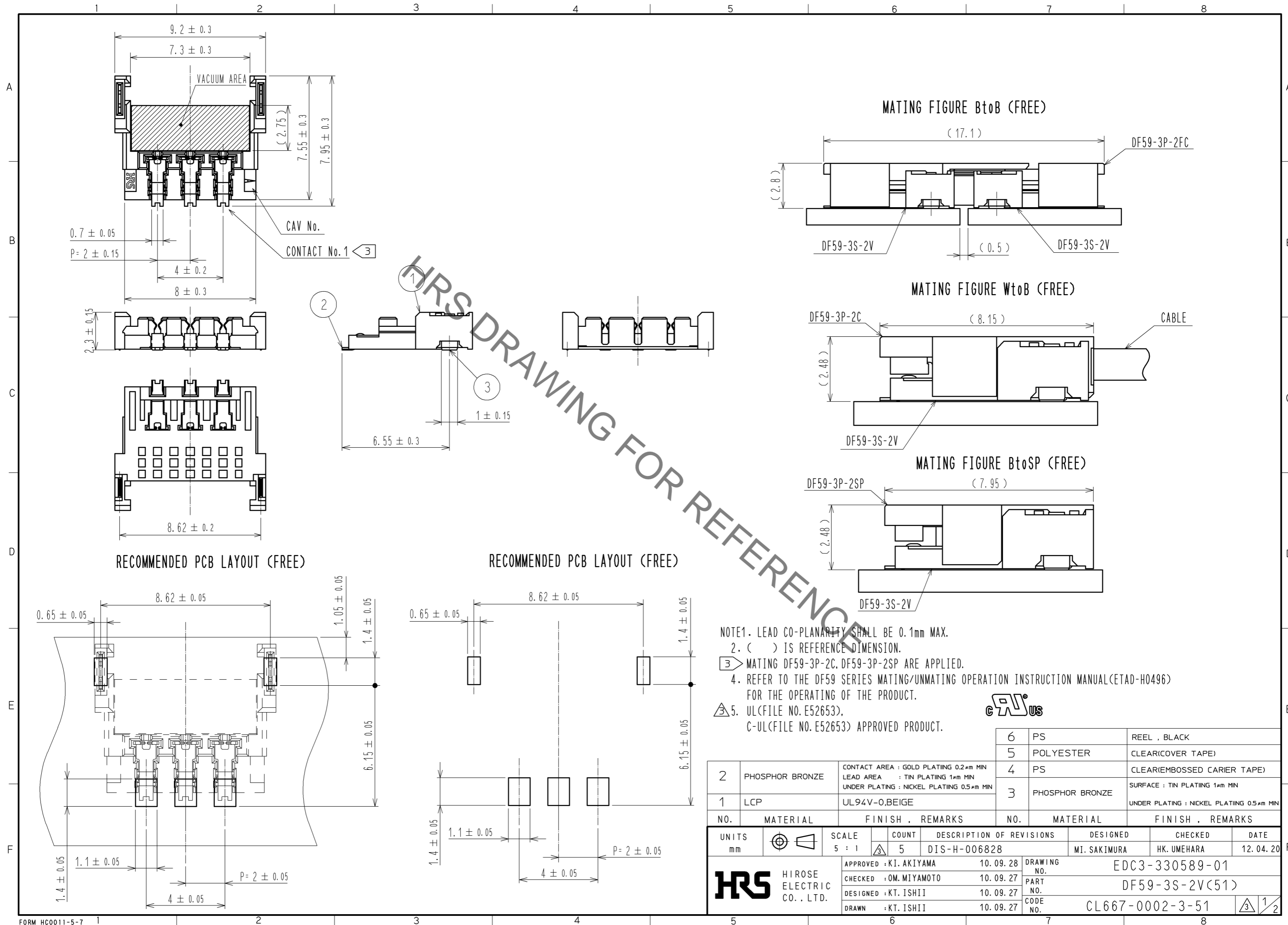


Nov.1.2022 Copyright 2022 HIROSE ELECTRIC CO., LTD. All Rights Reserved.
In case of consideration for using Automotive equipment / device which demand high reliability, kindly contact our sales window correspondents.

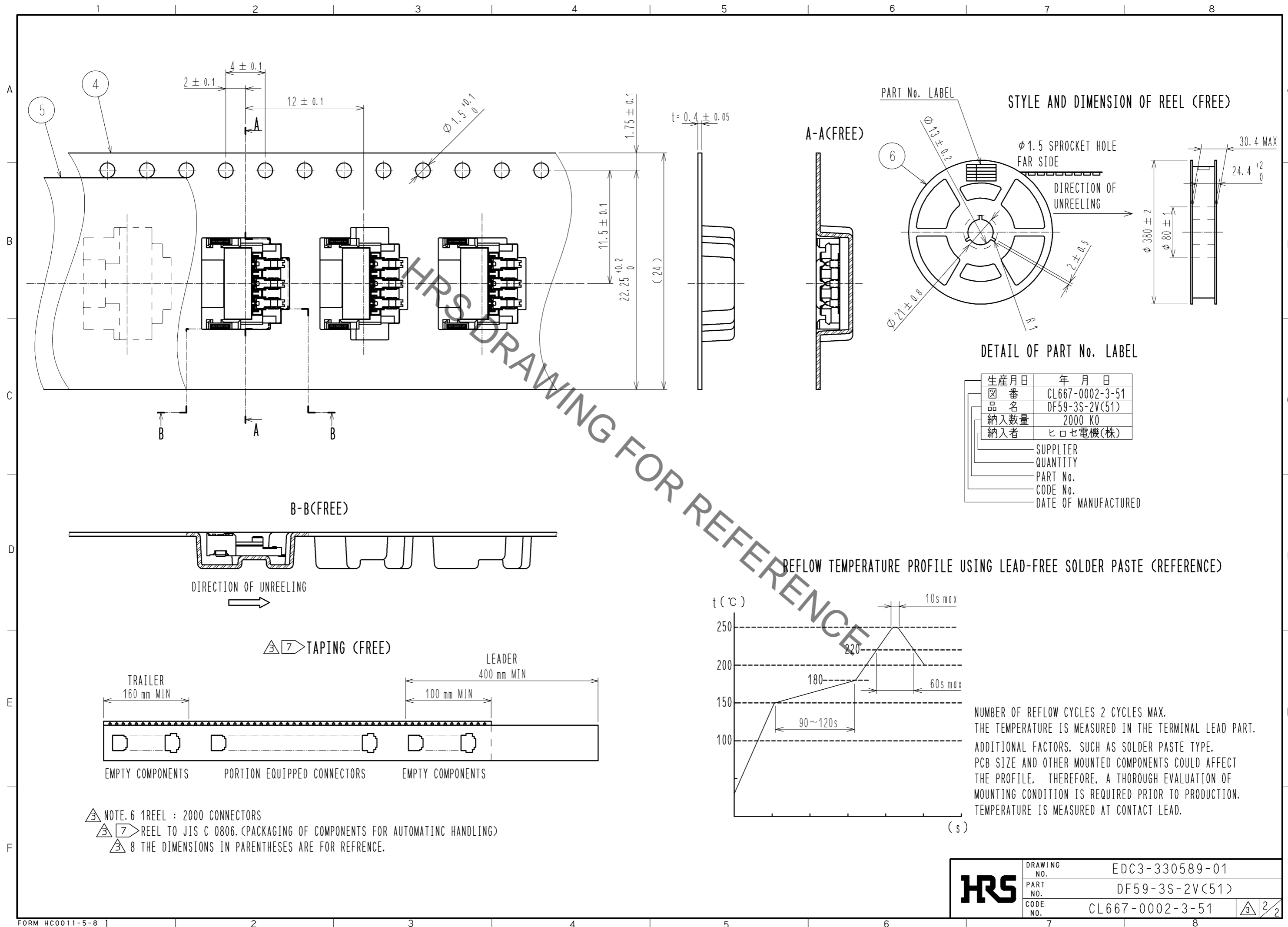


NOTE1. LEAD CO-PLANARITY SHALL BE 0.1mm MAX.
 2. () IS REFERENCE DIMENSION.
 ③ MATING DF59-3P-2C, DF59-3P-2SP ARE APPLIED.
 4. REFER TO THE DF59 SERIES MATING/UNMATING OPERATION INSTRUCTION MANUAL(ETAD-H0496) FOR THE OPERATING OF THE PRODUCT.
 ⑤ UL(FILE NO. E52653), C-UL(FILE NO. E52653) APPROVED PRODUCT.



2	PHOSPHOR BRONZE	CONTACT AREA : GOLD PLATING 0.2μm MIN LEAD AREA : TIN PLATING 1μm MIN UNDER PLATING : NICKEL PLATING 0.5μm MIN	6	PS	REEL , BLACK			
1	LCP	UL94V-0,BEIGE	5	POLYESTER	CLEAR(COVER TAPE)			
			4	PS	CLEAR(EMBOSSSED CARRIER TAPE)			
			3	PHOSPHOR BRONZE	SURFACE : TIN PLATING 1μm MIN UNDER PLATING : NICKEL PLATING 0.5μm MIN			
NO.	MATERIAL	FINISH , REMARKS	NO.	MATERIAL	FINISH , REMARKS			
UNITS	mm	SCALE	5 : 1	COUNT	5			
		DESCRIPTION OF REVISIONS	DESIGNED	MI. SAKIMURA	CHECKED	HK. UMEHARA	DATE	12. 04. 20
		APPROVED : KI. AKIYAMA	10. 09. 28	DRAWING NO.		EDC3-330589-01		
		CHECKED : OM. MIYAMOTO	10. 09. 27	PART NO.		DF59-3S-2V(51)		
		DESIGNED : KT. ISHII	10. 09. 27	CODE NO.		CL667-0002-3-51		
		DRAWN : KT. ISHII	10. 09. 27			③ 1/2		

Nov.1.2022 Copyright 2022 HIROSE ELECTRIC CO., LTD. All Rights Reserved.
 In case of consideration for using Automotive equipment / device which demand high reliability, kindly contact our sales window correspondents.



HRS	DRAWING NO.	EDC3-330589-01
	PART NO.	DF59-3S-2V(51)
	CODE NO.	CL667-0002-3-51
		2/2