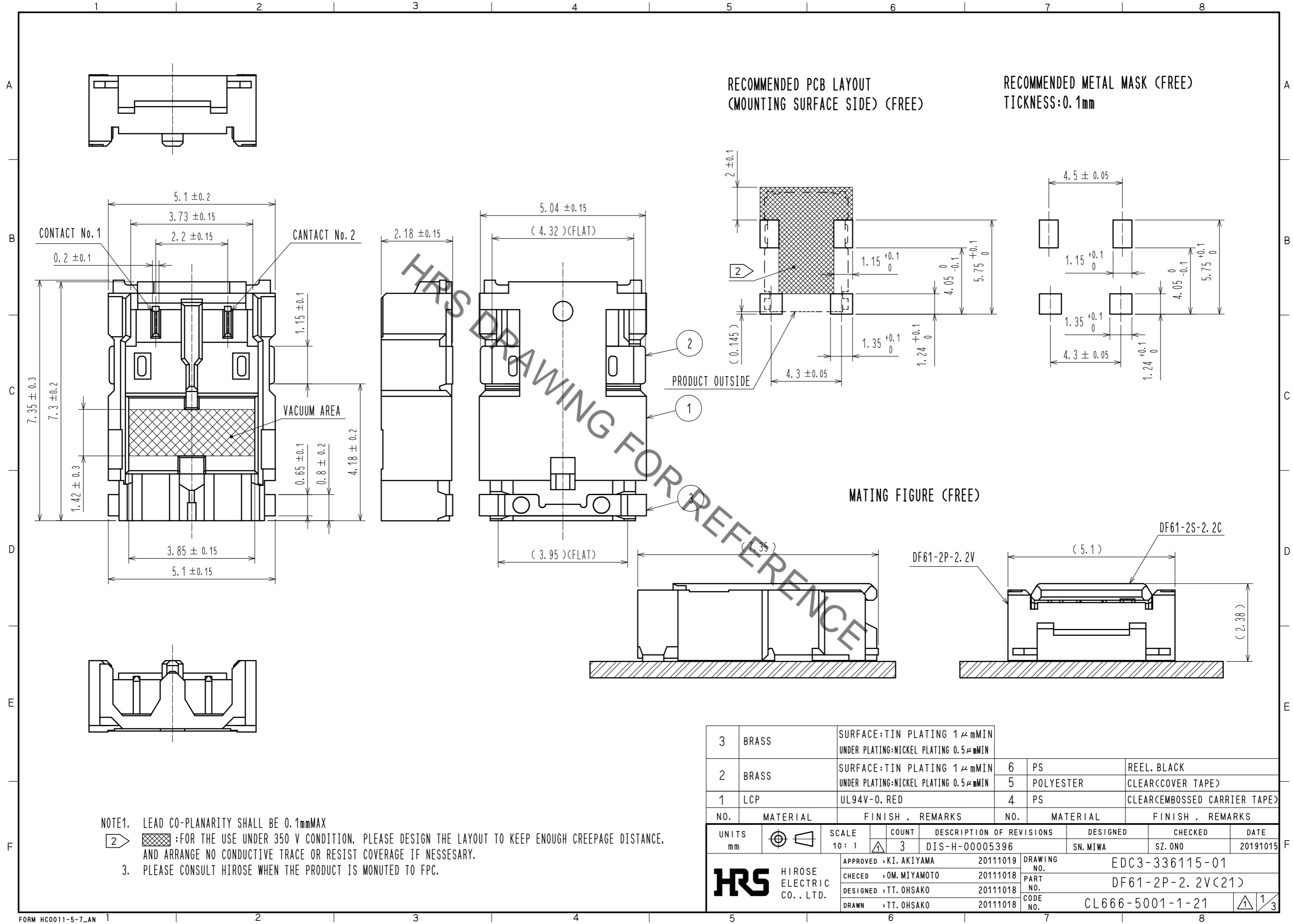


Nov.1.2020 Copyright 2020 HIROSE ELECTRIC CO., LTD. All Rights Reserved.
 In case of consideration for using Automotive equipment / device which demand high reliability, kindly contact our sales window correspondents.

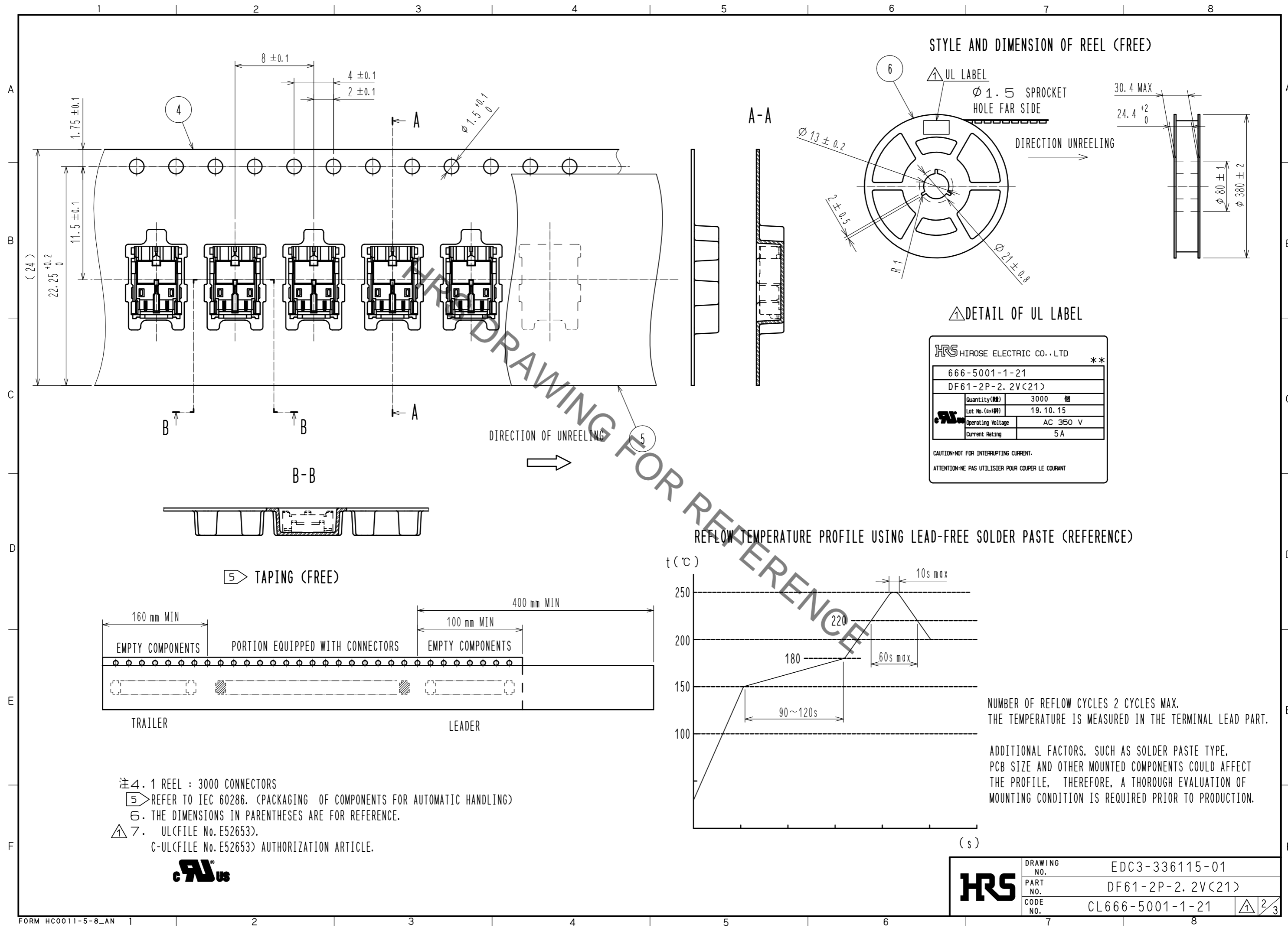


NOTE1. LEAD CO-PLANARITY SHALL BE 0.1mmMAX

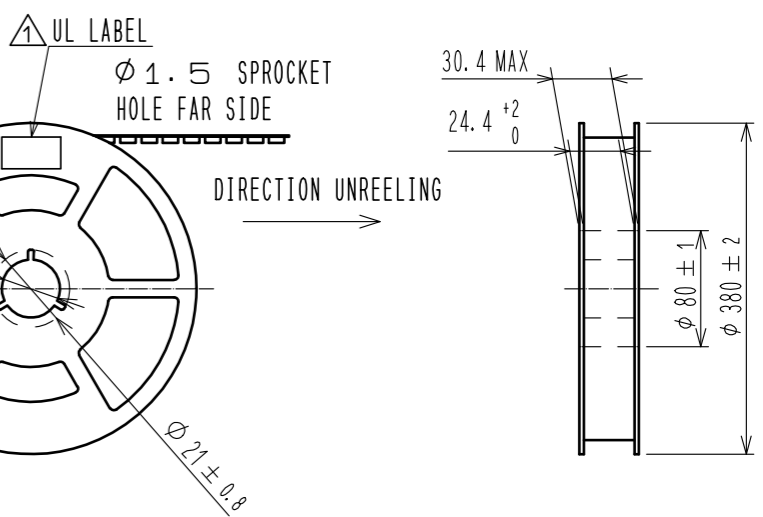
2. :FOR THE USE UNDER 350 V CONDITION. PLEASE DESIGN THE LAYOUT TO KEEP ENOUGH CREEPAGE DISTANCE, AND ARRANGE NO CONDUCTIVE TRACE OR RESIST COVERAGE IF NECESSARY.

3. PLEASE CONSULT HIROSE WHEN THE PRODUCT IS MONUTED TO FPC.

Nov.1.2020 Copyright 2020 HIROSE ELECTRIC CO., LTD. All Rights Reserved.
 In case of consideration for using Automotive equipment / device which demand high reliability, kindly contact our sales window correspondents.



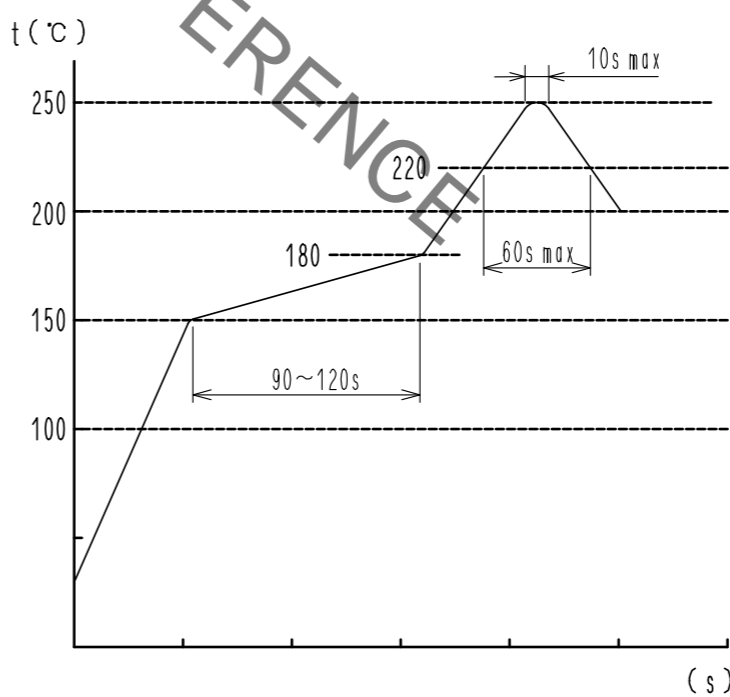
STYLE AND DIMENSION OF REEL (FREE)



DETAIL OF UL LABEL

HRS HIROSE ELECTRIC CO., LTD		**
666-5001-1-21		
DF61-2P-2.2V(21)		
Quantity(個)	3000	個
Lot No.(巻) (年) (月) (日)	19.10.15	
Operating Voltage	AC 350 V	
Current Rating	5 A	
CAUTION:NOT FOR INTERRUPTING CURRENT.		
ATTENTION:NE PAS UTILISER POUR COUPER LE COURANT		

REFLOW TEMPERATURE PROFILE USING LEAD-FREE SOLDER PASTE (REFERENCE)



NUMBER OF REFLOW CYCLES 2 CYCLES MAX.
 THE TEMPERATURE IS MEASURED IN THE TERMINAL LEAD PART.

ADDITIONAL FACTORS, SUCH AS SOLDER PASTE TYPE,
 PCB SIZE AND OTHER MOUNTED COMPONENTS COULD AFFECT
 THE PROFILE. THEREFORE, A THOROUGH EVALUATION OF
 MOUNTING CONDITION IS REQUIRED PRIOR TO PRODUCTION.

- 注4. 1 REEL : 3000 CONNECTORS
- 5 REFER TO IEC 60286. (PACKAGING OF COMPONENTS FOR AUTOMATIC HANDLING)
- 6. THE DIMENSIONS IN PARENTHESES ARE FOR REFERENCE.
- 7. UL(FILE No. E52653).
 C-UL(FILE No. E52653) AUTHORIZATION ARTICLE.



HRS	DRAWING NO.	EDC3-336115-01
	PART NO.	DF61-2P-2.2V(21)
	CODE NO.	CL666-5001-1-21
		2/3

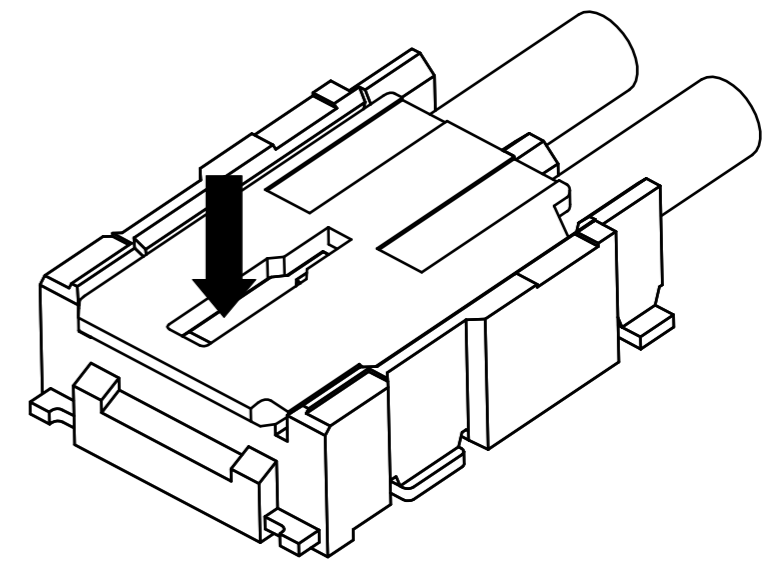
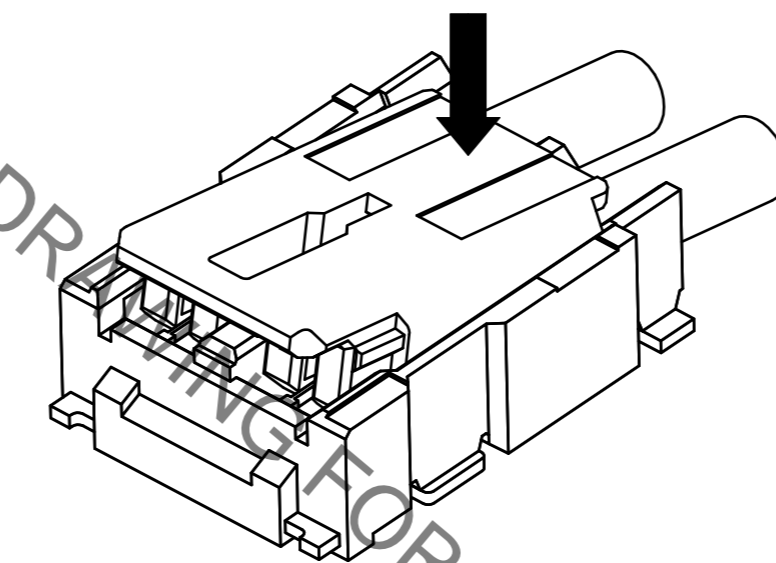
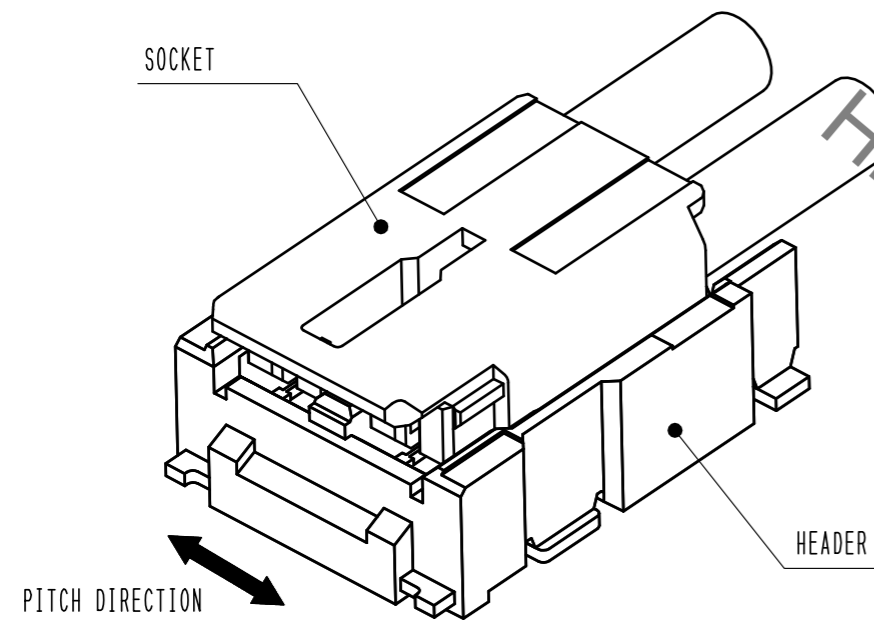
DF61 Series Mating / Unmating Operation Instruction

Mating

① By positioning the convexity of the socket sides to the header concavity, align the centers of the socket and the header in pitch direction.

② Slightly press the socket down at cable side to tilted angle.

③ Press down at the lever side with stabilizing the cable side to insert. Mating completes.

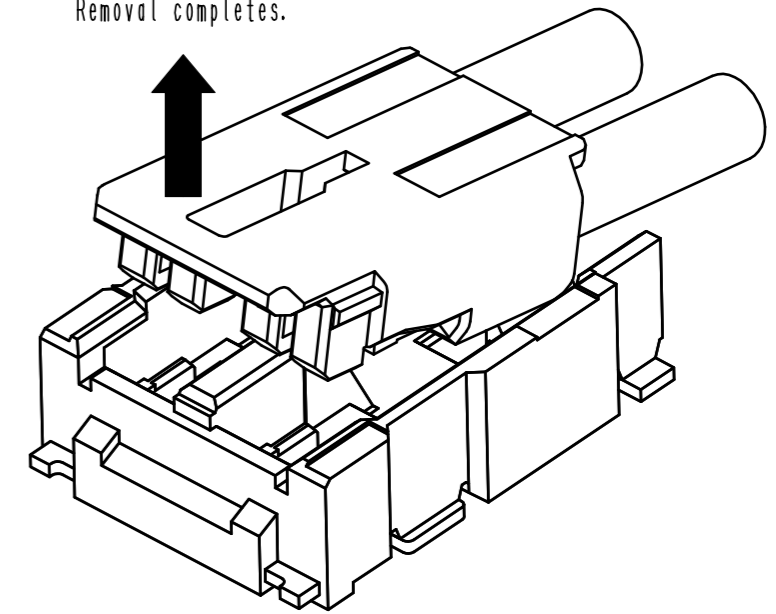
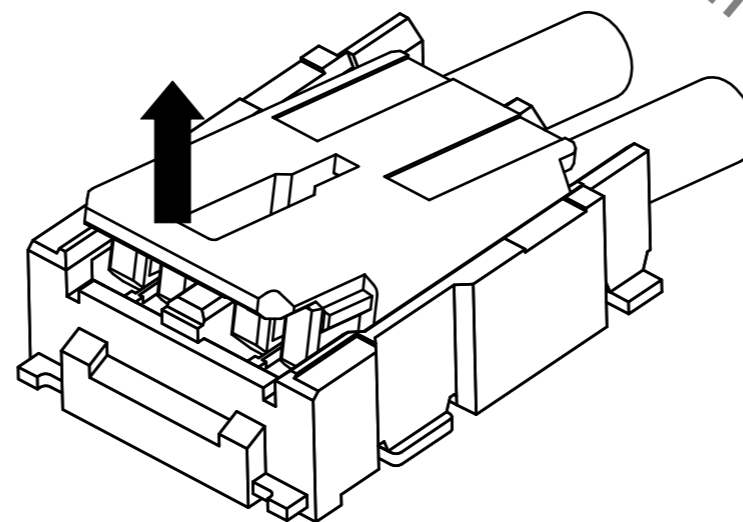
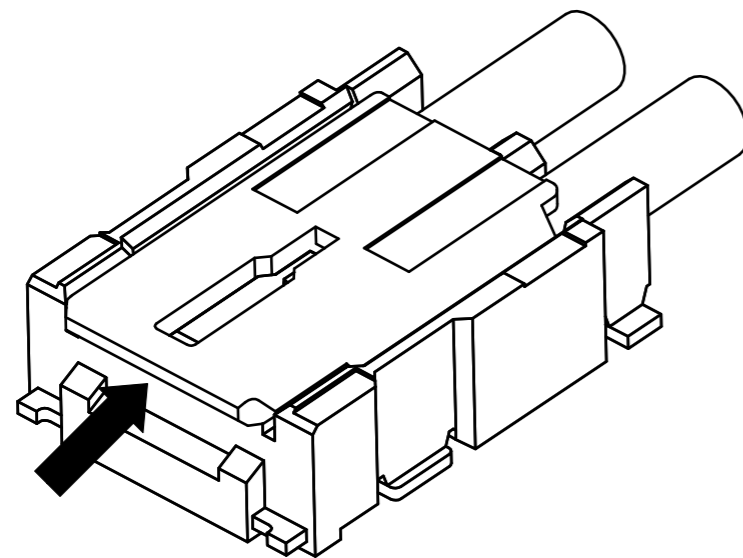


Unmating

① Hook the lever with finger nail.

② Lift up to the upper direction and friction lock is released.

③ Lift up to the upper direction and positive lock is released. Removal completes.



HRS

図番: EDC3-336115-01
 製品名: DF61-2P-2.2V(21)
 製品コード: CL666-5001-1-21

3/3