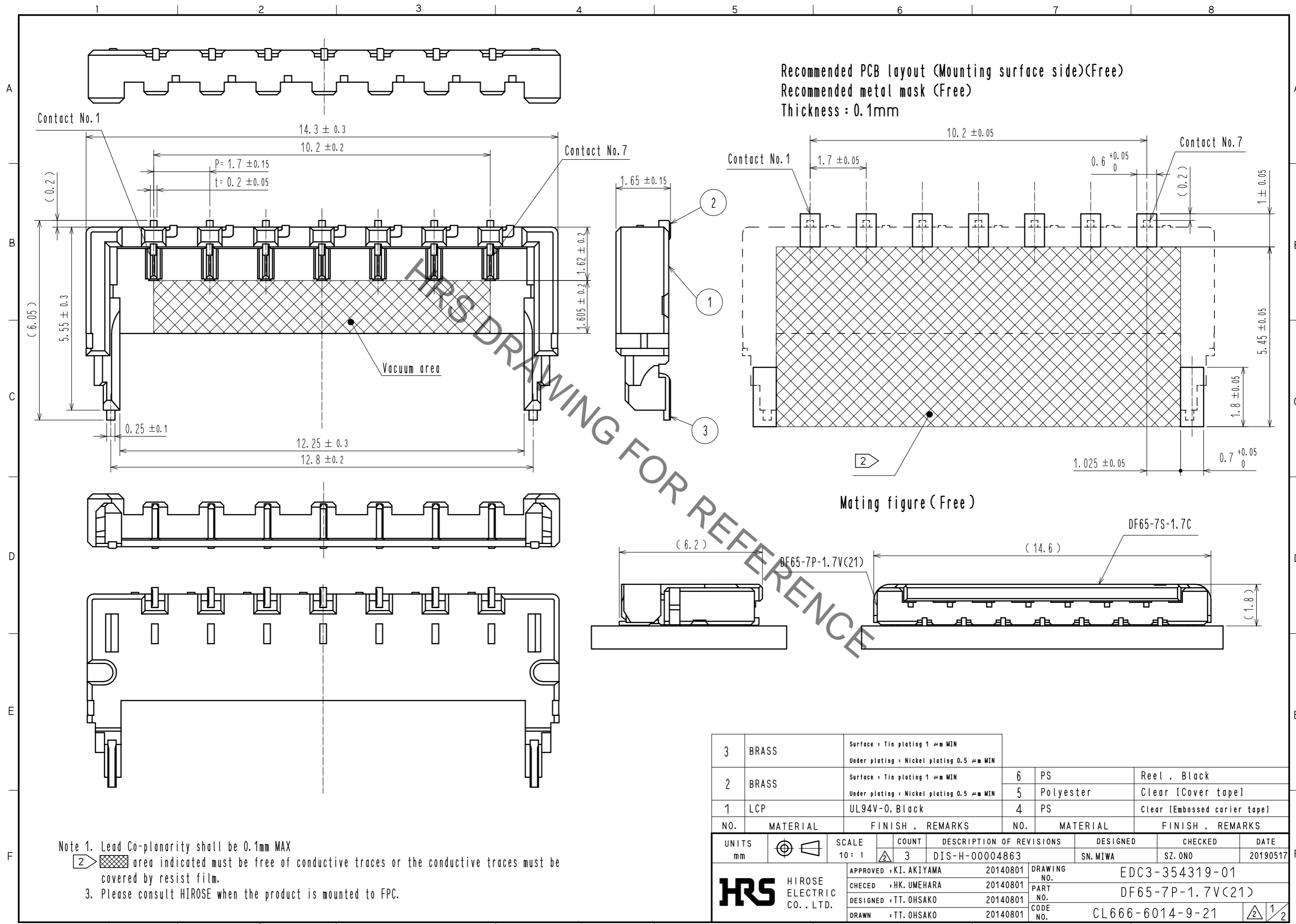


Oct.1.2021 Copyright 2021 HIROSE ELECTRIC CO., LTD. All Rights Reserved.  
In case of consideration for using Automotive equipment / device which demand high reliability, kindly contact our sales window correspondents.



Note 1. Lead Co-planarity shall be 0.1mm MAX  
 2. area indicated must be free of conductive traces or the conductive traces must be covered by resist film.  
 3. Please consult HIROSE when the product is mounted to FPC.

NO.	MATERIAL	FINISH	REMARKS	NO.	MATERIAL	FINISH	REMARKS
3	BRASS	Surface : Tin plating 1 μm MIN Under plating : Nickel plating 0.5 μm MIN		6	PS		Reel . Black
2	BRASS	Surface : Tin plating 1 μm MIN Under plating : Nickel plating 0.5 μm MIN		5	Polyester		Clear [Cover tape]
1	LCP	UL94V-0, Black		4	PS		Clear [Embossed carrier tape]

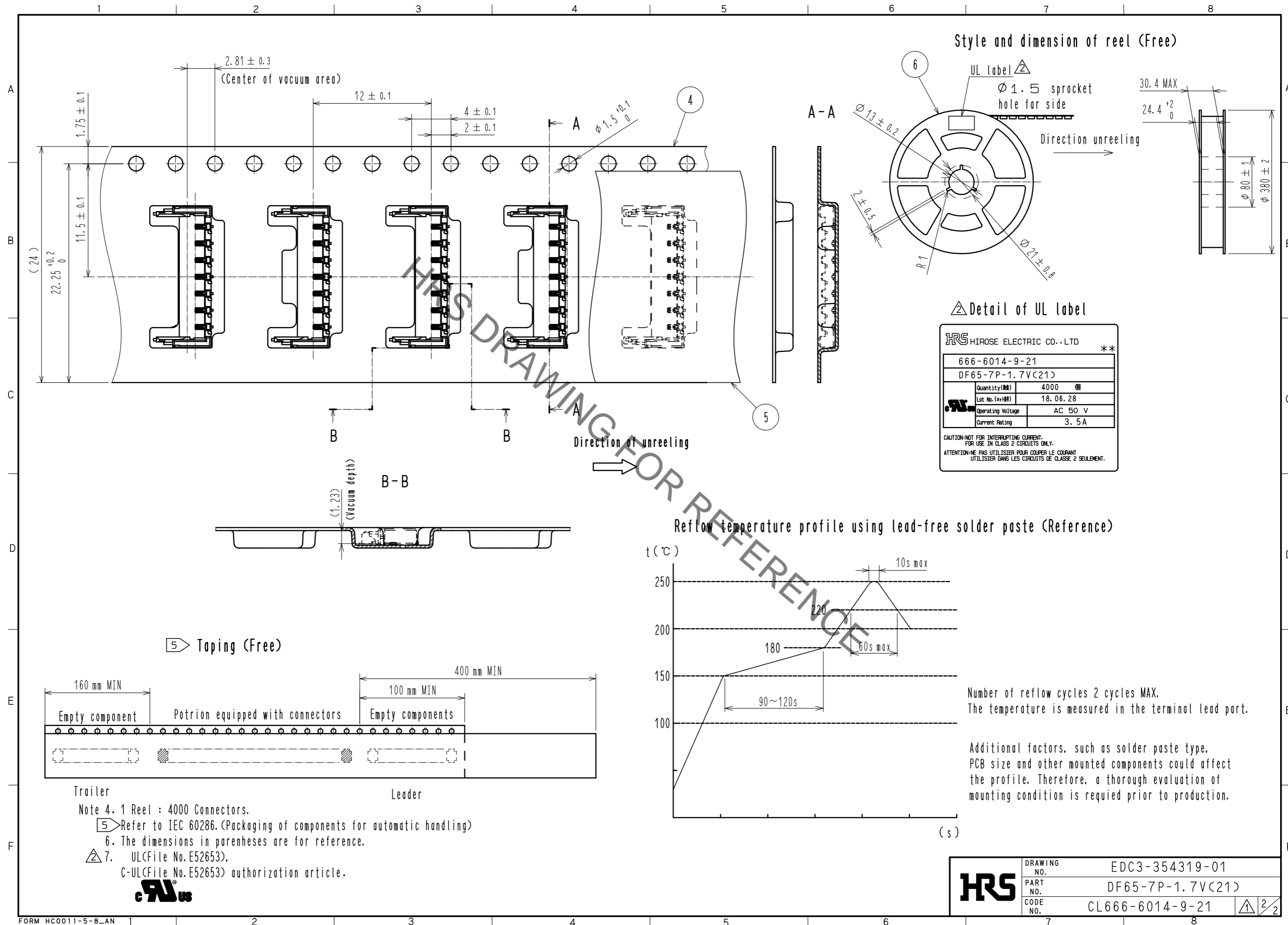
  

UNITS	SCALE	COUNT	DESCRIPTION OF REVISIONS	DESIGNED	CHECKED	DATE
mm	10:1	3	DIS-H-00004863	SN.MIWA	SZ.ONO	20190517

APPROVED	CHECKED	DESIGNED	DRAWN	DRAWING NO.	PART NO.	CODE NO.
: KI. AKIYAMA	: HK. UMEHARA	: TT. OHSAKO	: TT. OHSAKO	EDC3-354319-01	DF65-7P-1.7V(21)	CL666-6014-9-21

Oct.1.2021 Copyright 2021 HIROSE ELECTRIC CO., LTD. All Rights Reserved.  
In case of consideration for using Automotive equipment / device which demand high reliability, kindly contact our sales window correspondents.



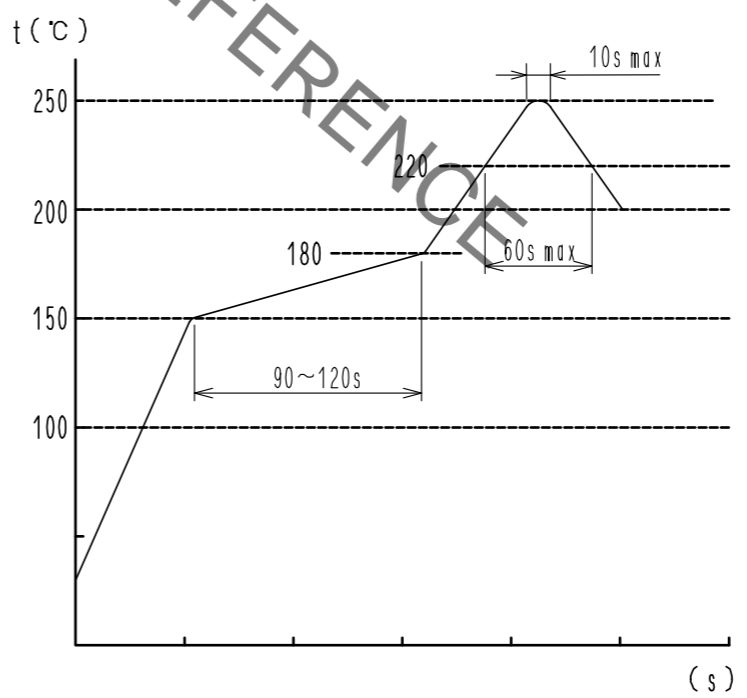
Style and dimension of reel (Free)

Detail of UL label

HRS HIROSE ELECTRIC CO., LTD		**
666-6014-9-21		
DF65-7P-1.7V(21)		
Quantity(個)	4000	個
Lot No.(年+月)	18.06.28	
Operating Voltage	AC 50 V	
Current Rating	3.5 A	

CAUTION: NOT FOR INTERRUPTING CURRENT.  
FOR USE IN CLASS 2 CIRCUITS ONLY.  
ATTENTION: NE PAS UTILISER POUR COUPER LE COURANT  
UTILISER DANS LES CIRCUITS DE CLASSE 2 SEULEMENT.

Reflow temperature profile using lead-free solder paste (Reference)



Number of reflow cycles 2 cycles MAX.  
The temperature is measured in the terminal lead part.

Additional factors, such as solder paste type,  
PCB size and other mounted components could affect  
the profile. Therefore, a thorough evaluation of  
mounting condition is required prior to production.

<b>HRS</b>	DRAWING NO.	EDC3-354319-01
	PART NO.	DF65-7P-1.7V(21)
	CODE NO.	CL666-6014-9-21
		2/2