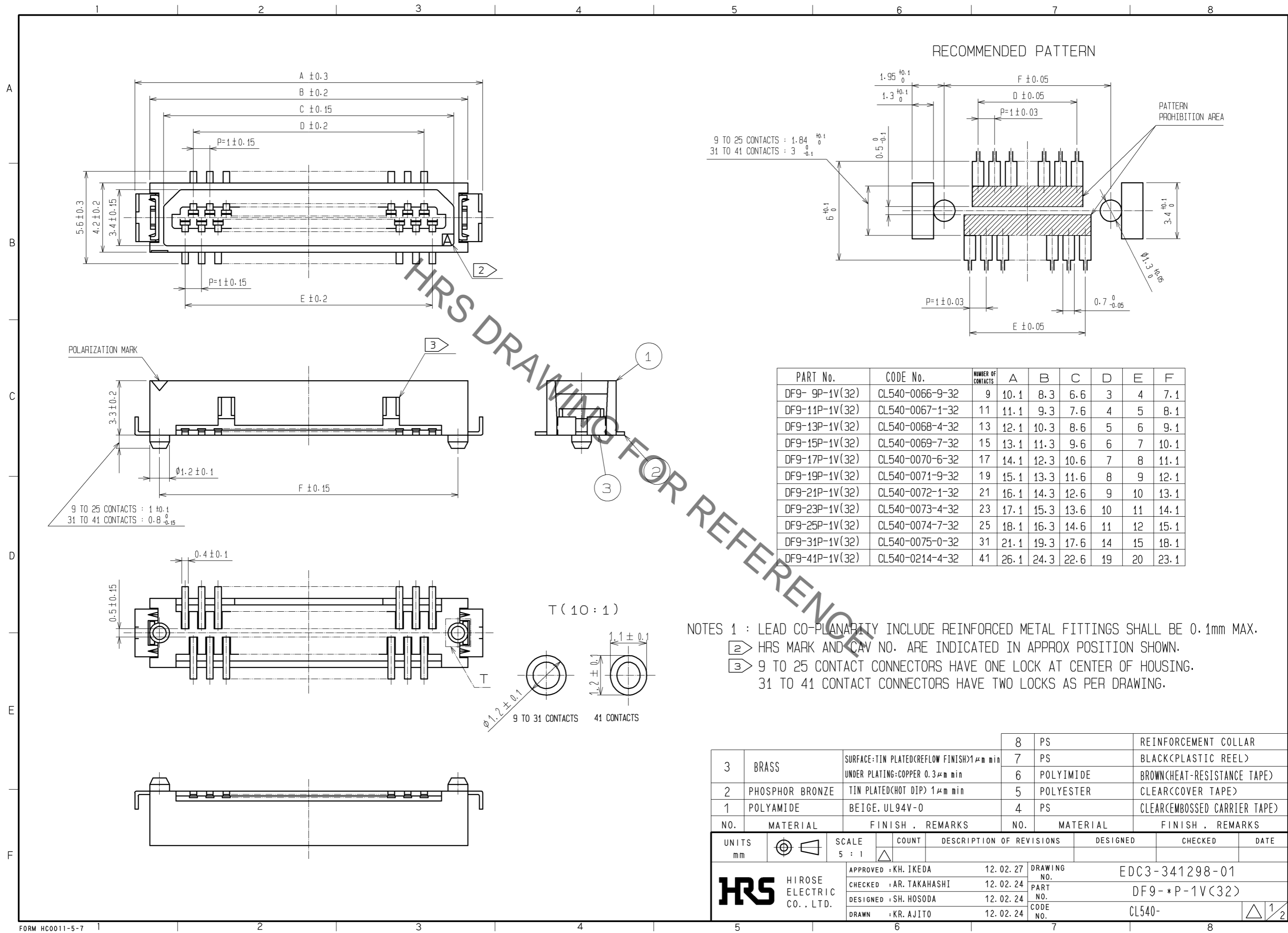


Dec.1.2019 Copyright 2019 HIROSE ELECTRIC CO., LTD. All Rights Reserved.
In case of consideration for using Automotive equipment / device which demand high reliability, kindly contact our sales window correspondents.



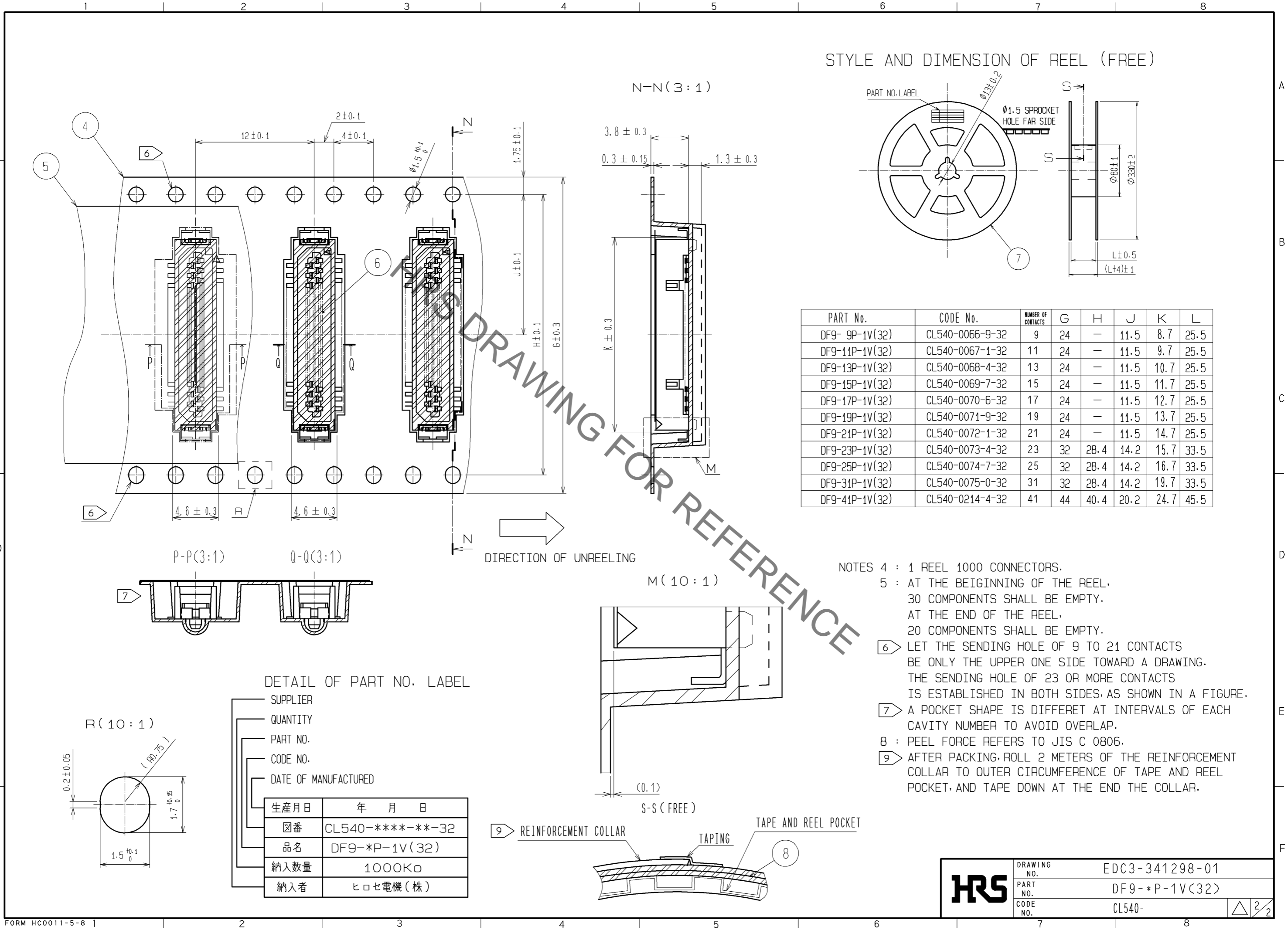
| PART No. | CODE No. | NUMBER OF CONTACTS | A | B | C | D | E | F |
|----------------|-----------------|--------------------|------|------|------|----|----|------|
| DF9-9P-1V(32) | CL540-0066-9-32 | 9 | 10.1 | 8.3 | 6.6 | 3 | 4 | 7.1 |
| DF9-11P-1V(32) | CL540-0067-1-32 | 11 | 11.1 | 9.3 | 7.6 | 4 | 5 | 8.1 |
| DF9-13P-1V(32) | CL540-0068-4-32 | 13 | 12.1 | 10.3 | 8.6 | 5 | 6 | 9.1 |
| DF9-15P-1V(32) | CL540-0069-7-32 | 15 | 13.1 | 11.3 | 9.6 | 6 | 7 | 10.1 |
| DF9-17P-1V(32) | CL540-0070-6-32 | 17 | 14.1 | 12.3 | 10.6 | 7 | 8 | 11.1 |
| DF9-19P-1V(32) | CL540-0071-9-32 | 19 | 15.1 | 13.3 | 11.6 | 8 | 9 | 12.1 |
| DF9-21P-1V(32) | CL540-0072-1-32 | 21 | 16.1 | 14.3 | 12.6 | 9 | 10 | 13.1 |
| DF9-23P-1V(32) | CL540-0073-4-32 | 23 | 17.1 | 15.3 | 13.6 | 10 | 11 | 14.1 |
| DF9-25P-1V(32) | CL540-0074-7-32 | 25 | 18.1 | 16.3 | 14.6 | 11 | 12 | 15.1 |
| DF9-31P-1V(32) | CL540-0075-0-32 | 31 | 21.1 | 19.3 | 17.6 | 14 | 15 | 18.1 |
| DF9-41P-1V(32) | CL540-0214-4-32 | 41 | 26.1 | 24.3 | 22.6 | 19 | 20 | 23.1 |

NOTES 1 : LEAD CO-PLANARITY INCLUDE REINFORCED METAL FITTINGS SHALL BE 0.1mm MAX.
 2 HRS MARK AND CAV NO. ARE INDICATED IN APPROX POSITION SHOWN.
 3 9 TO 25 CONTACT CONNECTORS HAVE ONE LOCK AT CENTER OF HOUSING.
 31 TO 41 CONTACT CONNECTORS HAVE TWO LOCKS AS PER DRAWING.

| NO. | MATERIAL | FINISH | REMARKS | NO. | MATERIAL | FINISH | REMARKS |
|-----|-----------------|----------------------------------------------------------------------------------------------------|---------|-----|-----------|--------|------------------------------|
| 3 | BRASS | SURFACE:TIN PLATED(REFLOW FINISH) $1\mu\text{m min}$ UNDER PLATING: COPPER $0.3\mu\text{m min}$ | | 8 | PS | | REINFORCEMENT COLLAR |
| 2 | PHOSPHOR BRONZE | TIN PLATED(HOT DIP) $1\mu\text{m min}$ | | 7 | PS | | BLACK(PLASTIC REEL) |
| 1 | POLYAMIDE | BEIGE, UL94V-0 | | 6 | POLYIMIDE | | BROWN(HEAT-RESISTANCE TAPE) |
| | | | | 5 | POLYESTER | | CLEAR(COVER TAPE) |
| | | | | 4 | PS | | CLEAR(EMBOSSED CARRIER TAPE) |

| UNITS | SCALE | COUNT | DESCRIPTION OF REVISIONS | DESIGNED | CHECKED | DATE |
|-------------------------|-------|-------|--------------------------|----------------------------|---------|------|
| mm | 5 : 1 | △ | | | | |
| APPROVED : KH. IKEDA | | | 12.02.27 | DRAWING NO. EDC3-341298-01 | | |
| CHECKED : AR. TAKAHASHI | | | 12.02.24 | PART NO. DF9-*P-1V(32) | | |
| DESIGNED : SH. HOSODA | | | 12.02.24 | CODE NO. CL540- | | |
| DRAWN : KR. AJITO | | | 12.02.24 | | | |

Dec.1.2019 Copyright 2019 HIROSE ELECTRIC CO., LTD. All Rights Reserved.
 In case of consideration for using Automotive equipment / device which demand high reliability, kindly contact our sales window correspondents.



| PART No. | CODE No. | NUMBER OF CONTACTS | G | H | J | K | L |
|----------------|-----------------|--------------------|----|------|------|------|------|
| DF9-9P-1V(32) | CL540-0066-9-32 | 9 | 24 | - | 11.5 | 8.7 | 25.5 |
| DF9-11P-1V(32) | CL540-0067-1-32 | 11 | 24 | - | 11.5 | 9.7 | 25.5 |
| DF9-13P-1V(32) | CL540-0068-4-32 | 13 | 24 | - | 11.5 | 10.7 | 25.5 |
| DF9-15P-1V(32) | CL540-0069-7-32 | 15 | 24 | - | 11.5 | 11.7 | 25.5 |
| DF9-17P-1V(32) | CL540-0070-6-32 | 17 | 24 | - | 11.5 | 12.7 | 25.5 |
| DF9-19P-1V(32) | CL540-0071-9-32 | 19 | 24 | - | 11.5 | 13.7 | 25.5 |
| DF9-21P-1V(32) | CL540-0072-1-32 | 21 | 24 | - | 11.5 | 14.7 | 25.5 |
| DF9-23P-1V(32) | CL540-0073-4-32 | 23 | 32 | 28.4 | 14.2 | 15.7 | 33.5 |
| DF9-25P-1V(32) | CL540-0074-7-32 | 25 | 32 | 28.4 | 14.2 | 16.7 | 33.5 |
| DF9-31P-1V(32) | CL540-0075-0-32 | 31 | 32 | 28.4 | 14.2 | 19.7 | 33.5 |
| DF9-41P-1V(32) | CL540-0214-4-32 | 41 | 44 | 40.4 | 20.2 | 24.7 | 45.5 |

- NOTES
- 4 : 1 REEL 1000 CONNECTORS.
 - 5 : AT THE BEIGINNING OF THE REEL, 30 COMPONENTS SHALL BE EMPTY. AT THE END OF THE REEL, 20 COMPONENTS SHALL BE EMPTY.
 - 6 LET THE SENDING HOLE OF 9 TO 21 CONTACTS BE ONLY THE UPPER ONE SIDE TOWARD A DRAWING. THE SENDING HOLE OF 23 OR MORE CONTACTS IS ESTABLISHED IN BOTH SIDES, AS SHOWN IN A FIGURE.
 - 7 A POCKET SHAPE IS DIFFERET AT INTERVALS OF EACH CAVITY NUMBER TO AVOID OVERLAP.
 - 8 : PEEL FORCE REFERS TO JIS C 0806.
 - 9 AFTER PACKING, ROLL 2 METERS OF THE REINFORCEMENT COLLAR TO OUTER CIRCUMFERENCE OF TAPE AND REEL POCKET, AND TAPE DOWN AT THE END THE COLLAR.

DETAIL OF PART NO. LABEL

- SUPPLIER
- QUANTITY
- PART NO.
- CODE NO.
- DATE OF MANUFACTURED

| | |
|------|------------------|
| 生産月日 | 年 月 日 |
| 図番 | CL540-****-**-32 |
| 品名 | DF9-*P-1V(32) |
| 納入数量 | 1000K0 |
| 納入者 | ヒロセ電機(株) |

| | | |
|------------|-------------|----------------|
| HRS | DRAWING NO. | EDC3-341298-01 |
| | PART NO. | DF9-*P-1V(32) |
| | CODE NO. | CL540- |