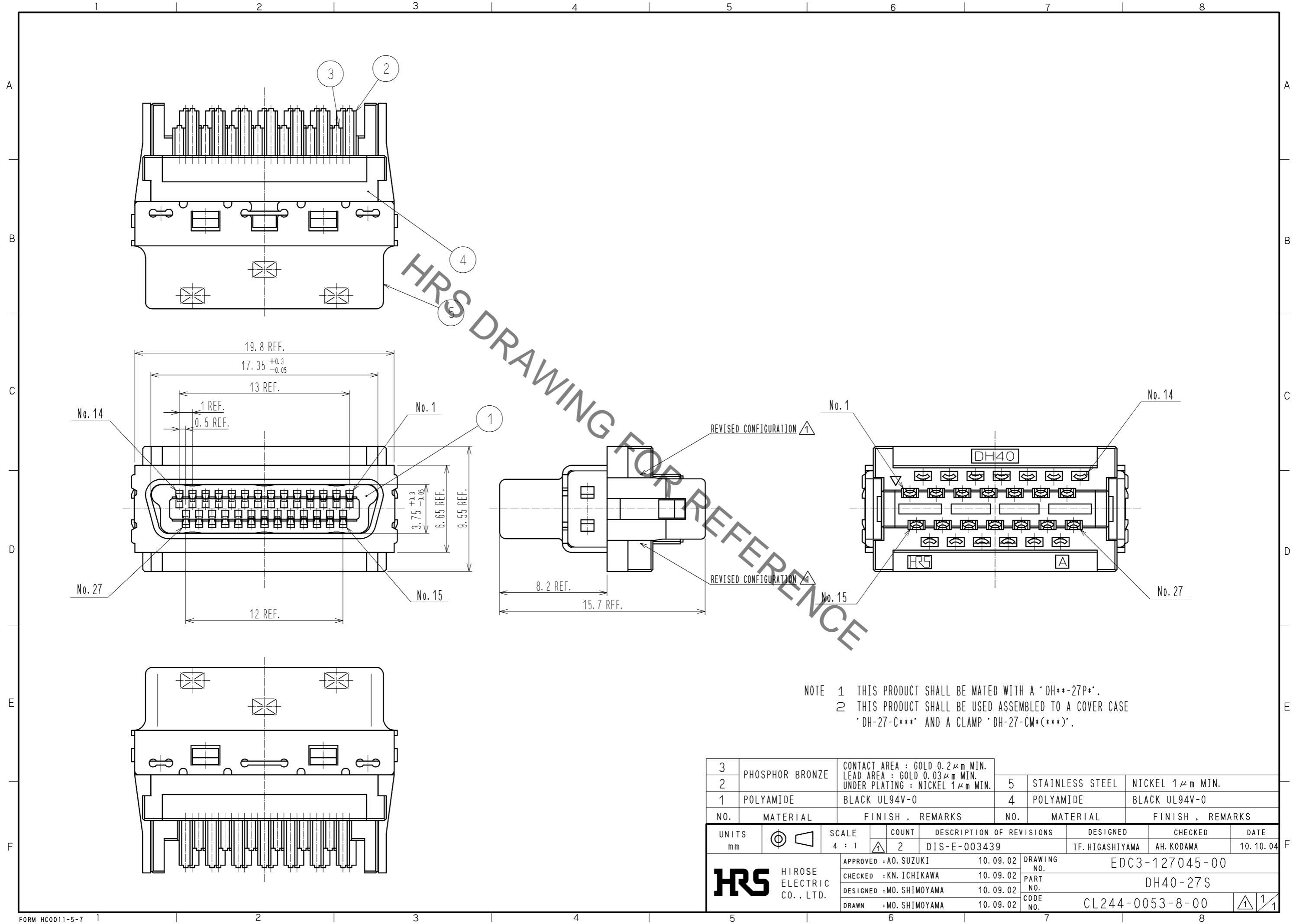


Jul.1.2019 Copyright 2019 HIROSE ELECTRIC CO., LTD. All Rights Reserved.
 In case of consideration for using Automotive equipment / device which demand high reliability, kindly contact our sales window correspondents.



NOTE 1 THIS PRODUCT SHALL BE MATED WITH A 'DH**-27P*'.
 2 THIS PRODUCT SHALL BE USED ASSEMBLED TO A COVER CASE 'DH-27-C***' AND A CLAMP 'DH-27-CM*(***)'.

3	PHOSPHOR BRONZE	CONTACT AREA : GOLD 0.2 μm MIN. LEAD AREA : GOLD 0.03 μm MIN. UNDER PLATING : NICKEL 1 μm MIN.	5	STAINLESS STEEL	NICKEL 1 μm MIN.
2			4	POLYAMIDE	BLACK UL94V-0
1	POLYAMIDE	BLACK UL94V-0			
NO.	MATERIAL	FINISH . REMARKS	NO.	MATERIAL	FINISH . REMARKS
UNITS	mm	SCALE	4 : 1	COUNT	2
DESCRIPTION OF REVISIONS			DESIGNED	TF. HIGASHIYAMA	CHECKED
DIS-E-003439			DATE	10.10.04	
APPROVED : A0. SUZUKI			10.09.02	DRAWING NO. EDC3-127045-00	
CHECKED : KN. ICHIKAWA			10.09.02	PART NO. DH40-27S	
DESIGNED : MO. SHIMOYAMA			10.09.02	CODE NO. CL244-0053-8-00	
DRAWN : MO. SHIMOYAMA			10.09.02	1/1	