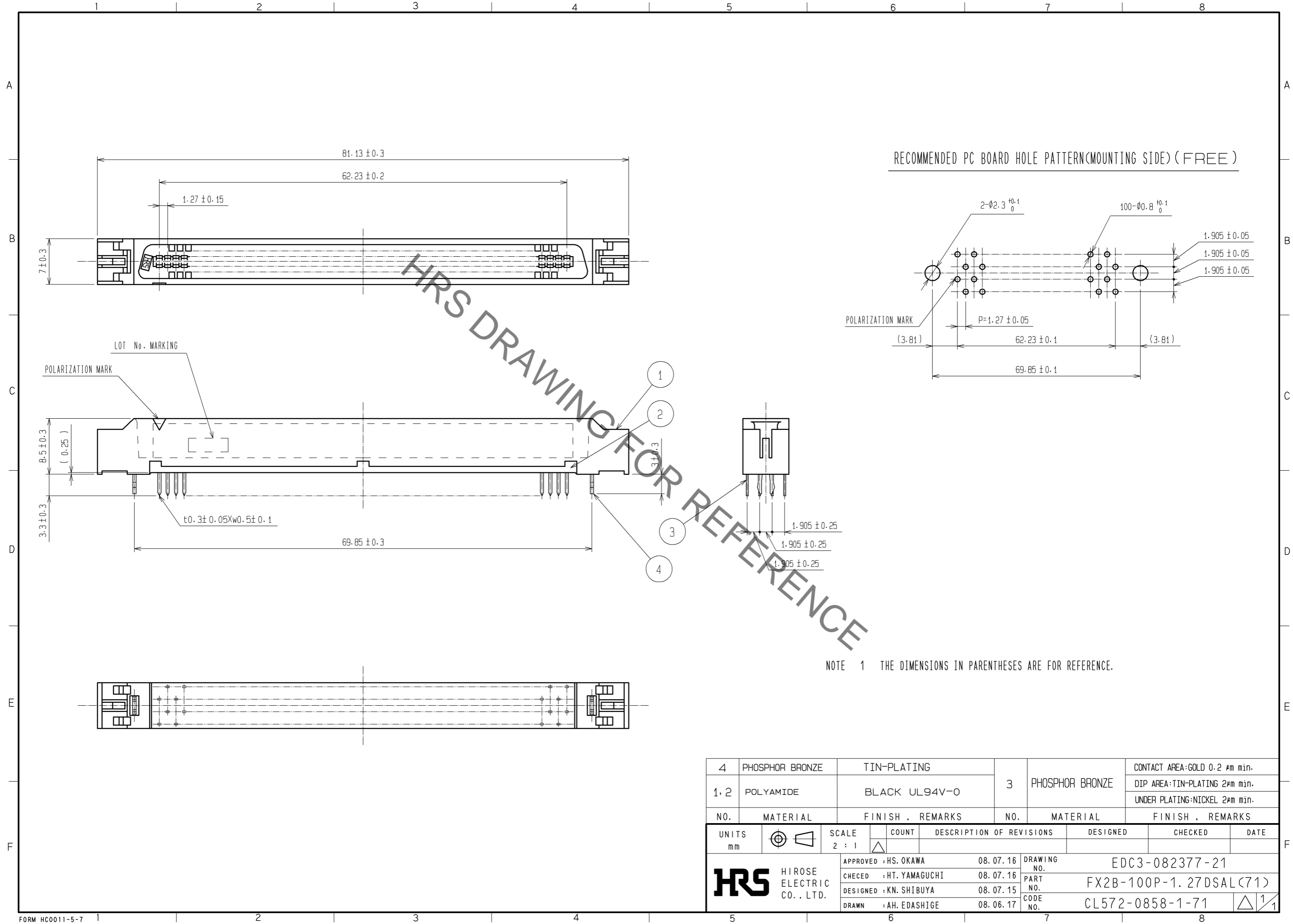


Jan.1.2022 Copyright 2022 HIROSE ELECTRIC CO., LTD. All Rights Reserved.
 In case of consideration for using Automotive equipment / device which demand high reliability, kindly contact our sales window correspondents.



NOTE 1 THE DIMENSIONS IN PARENTHESES ARE FOR REFERENCE.

4	PHOSPHOR BRONZE	TIN-PLATING		3	PHOSPHOR BRONZE	CONTACT AREA:GOLD 0.2 μm min.
1,2	POLYAMIDE	BLACK UL94V-0				DIP AREA:TIN-PLATING 2μm min.
						UNDER PLATING:NICKEL 2μm min.
NO.	MATERIAL	FINISH . REMARKS	NO.	MATERIAL	FINISH . REMARKS	
UNITS		SCALE	COUNT	DESCRIPTION OF REVISIONS		DESIGNED
mm		2 : 1				CHECKED
						DATE
HRS		HIROSE ELECTRIC CO., LTD.	APPROVED : HS. OKAWA	08.07.16	DRAWING NO. EDC3-082377-21	
			CHECED : HT. YAMAGUCHI	08.07.16	PART NO. FX2B-100P-1.27DSAL(71)	
			DESIGNED : KN. SHIBUYA	08.07.15	CODE NO. CL572-0858-1-71	
			DRAWN : AH. EDASHIGE	08.06.17		