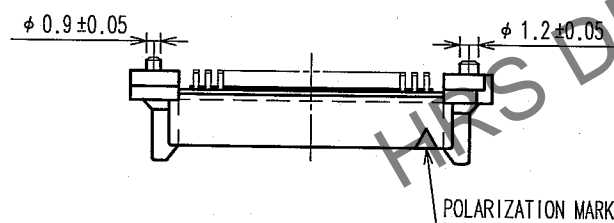
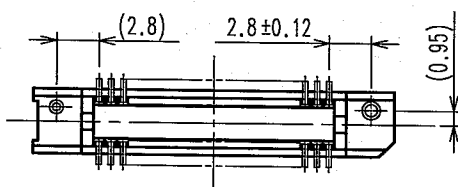
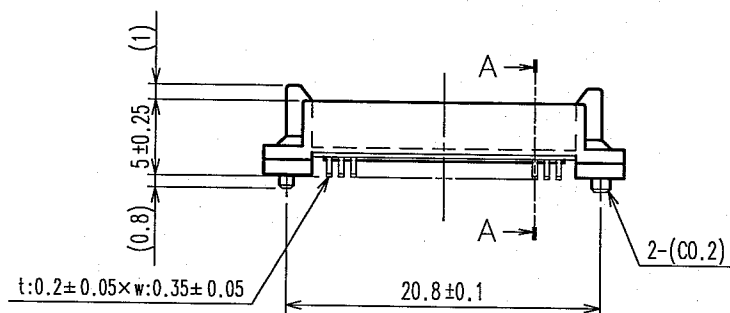
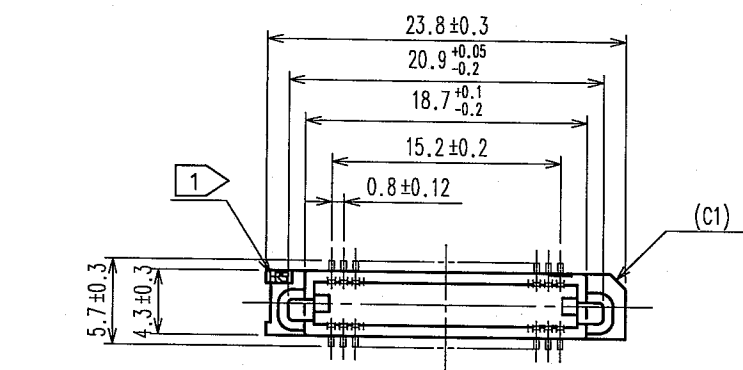
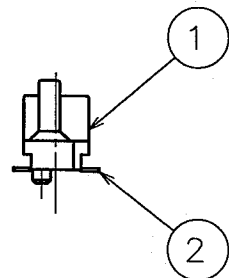
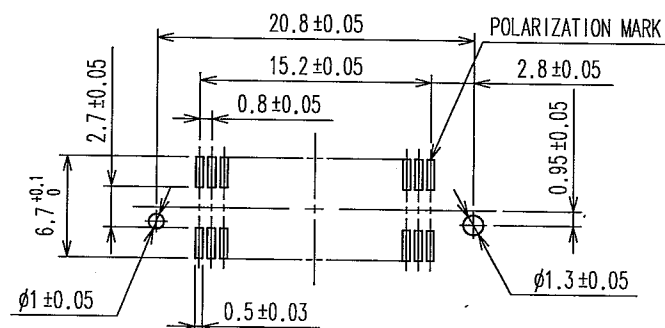


Apr.1.2024 Copyright 2024 HIROSE ELECTRIC CO., LTD. All Rights Reserved.
In case of consideration for using Automotive equipment / device which demand high reliability, kindly contact our sales window correspondents.

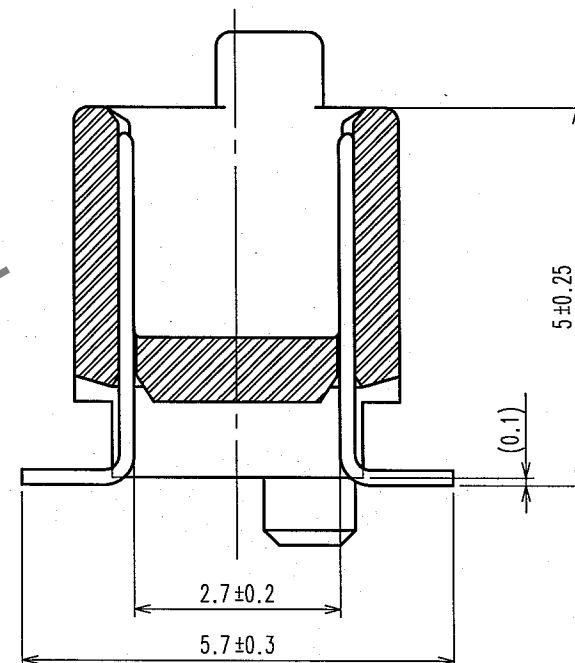
TO
PCK



RECOMMENDED LAND PATTERN DIMENSIONS
(MOUNT SIDE)



A-A (10:1)



- NOTE
- 1 HRS MARK SHOULD BE PRINTED. (THE PLACE IS ARBITRARY)
 - 2 LEAD CO-PLANARITY SHALL BE 0.1mm MAX.
 - 3 FOR MODIFICATION, ETC., PREVENTIVE HOLE FOR SINK MARK MAY BE ADDED ACCORDING TO CIRCUMSTANCES.
 - 4 THE DIMENSIONS IN PARENTHESES ARE FOR REFERENCE.

1	POLYPHENYLENE SULFIDE	LIGHT BROWN (UL94V-0)	2	PHOSPHOR BRONZE	CONTACT AREA: GOLD 0.1μm min. LEAD AREA: TIN 1μm min. UNDER PLATING: NICKEL 1μm min.
NO.	MATERIAL	FINISH, REMARKS	NO.	MATERIAL	FINISH, REMARKS
CODE NO. (OLD)			DRAWN	DESIGNED	CHECKED
			Y. AOYAGI	K. Doi	K. Ozawa
			05.08.30	05.09.02	05.09.02
DRAWING NO. EDC3-084966-25			PART NO. FX6-40P-0.8SV1(71)		
SCALE 2 : 1			CODE NO. CL576-0023-6-71		
UNITS mm			1/1		