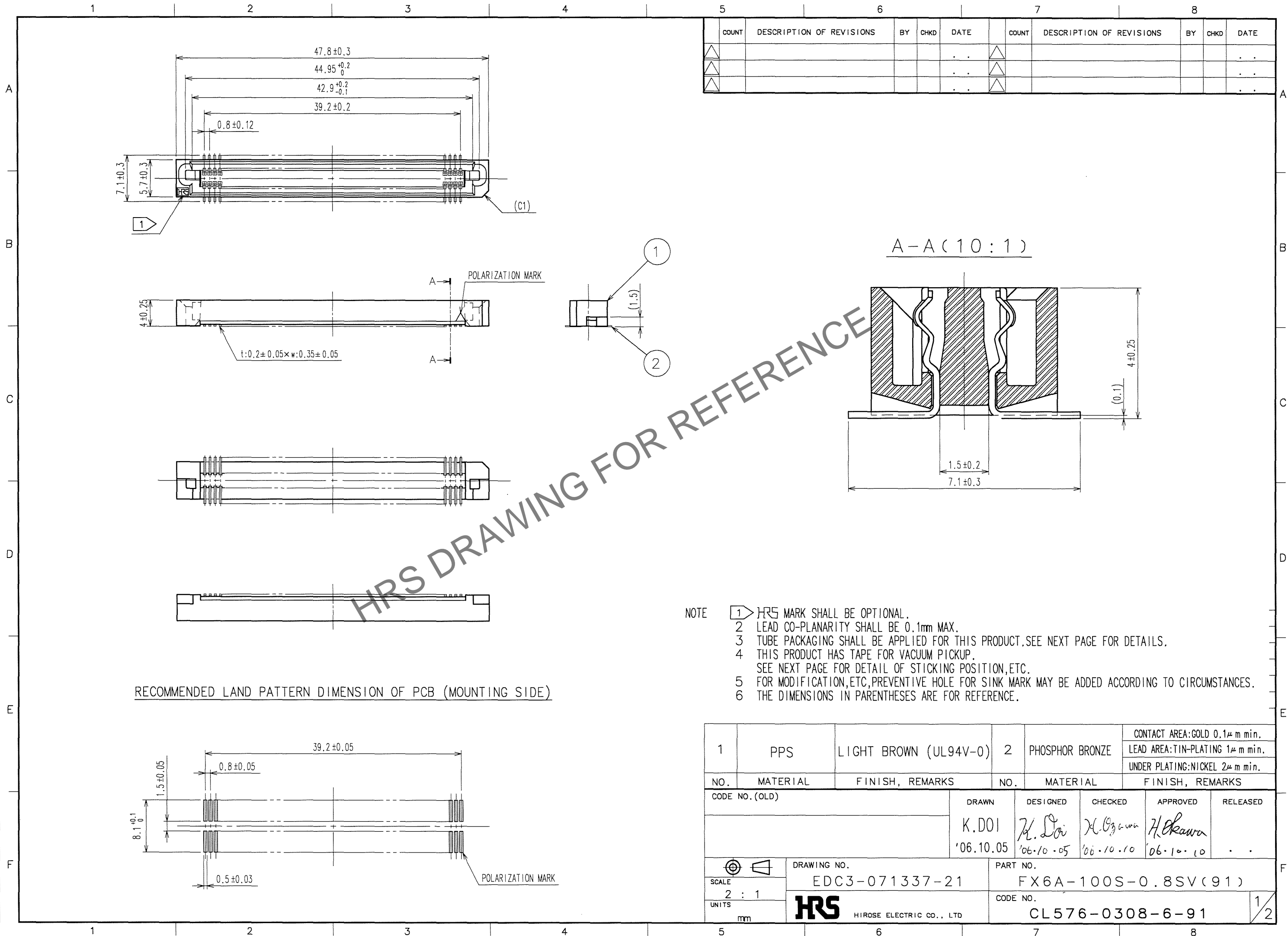
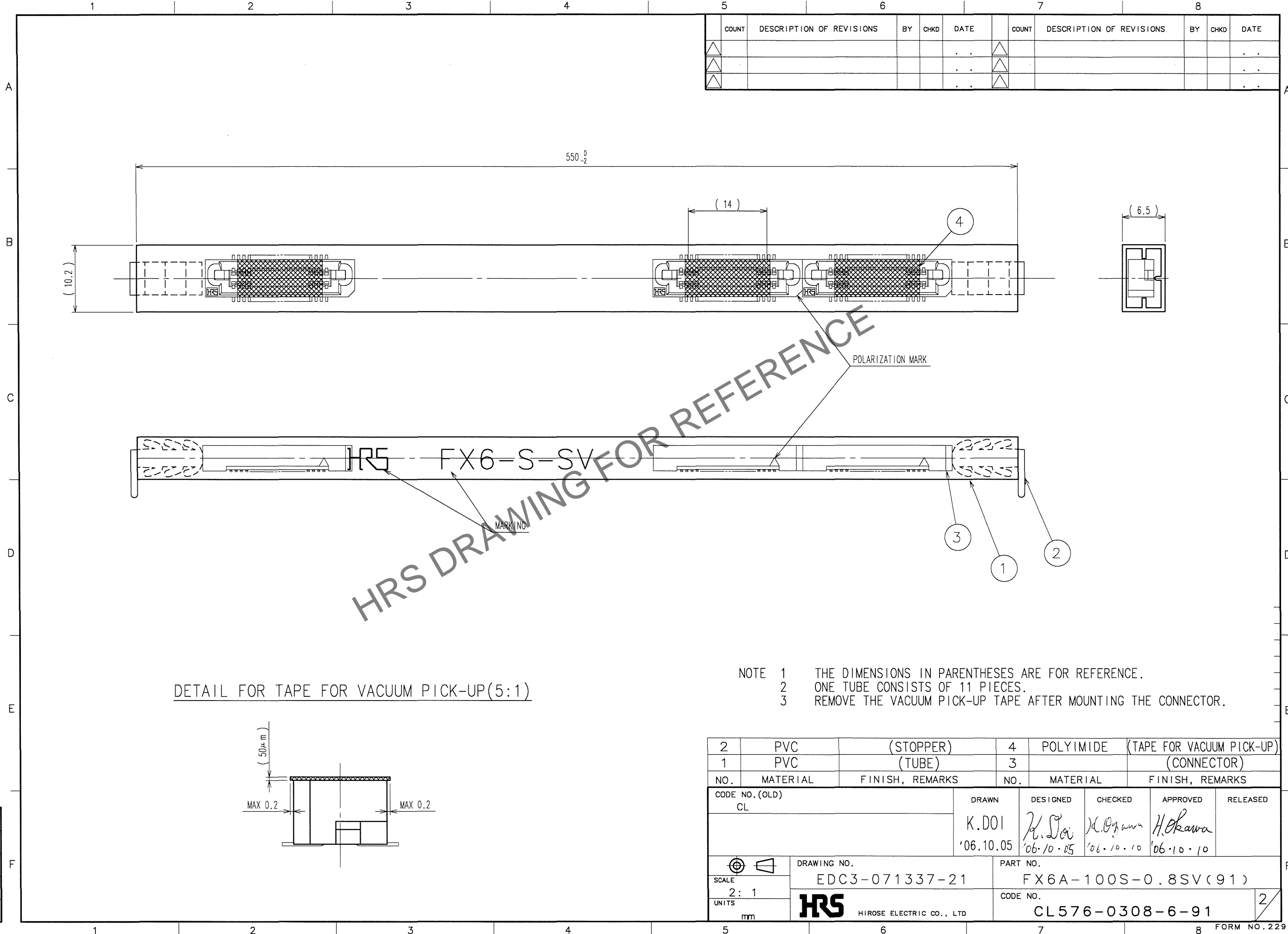


May.1.2024 Copyright 2024 HIROSE ELECTRIC CO., LTD. All Rights Reserved.
In case of consideration for using Automotive equipment / device which demand high reliability, kindly contact our sales window correspondents.



May.1.2024 Copyright 2024 HIROSE ELECTRIC CO., LTD. All Rights Reserved.
In case of consideration for using Automotive equipment / device which demand high reliability, kindly contact our sales window correspondents.

TO



5					6					7					8				
COUNT	DESCRIPTION OF REVISIONS				BY	CHKD	DATE			COUNT	DESCRIPTION OF REVISIONS				BY	CHKD	DATE		
△							. .			△							. .		
△							. .			△							. .		
△							. .			△							. .		

DETAIL FOR TAPE FOR VACUUM PICK-UP(5:1)

- NOTE 1 THE DIMENSIONS IN PARENTHESES ARE FOR REFERENCE.
2 ONE TUBE CONSISTS OF 11 PIECES.
3 REMOVE THE VACUUM PICK-UP TAPE AFTER MOUNTING THE CONNECTOR.

2	PVC	(STOPPER)	4	POLYIMIDE	(TAPE FOR VACUUM PICK-UP)
1	PVC	(TUBE)	3		(CONNECTOR)
NO.	MATERIAL	FINISH, REMARKS	NO.	MATERIAL	FINISH, REMARKS
CODE NO. (OLD) CL			DRAWN	DESIGNED	CHECKED
			K.DOI	K. Sai	K. Okiawa
			'06.10.05	'06.10.05	'06.10.10
					H. Okawa
					'06.10.10
DRAWING NO. EDC3-071337-21			PART NO. FX6A-100S-0.8SV(91)		
SCALE 2: 1			CODE NO. CL576-0308-6-91		
UNITS mm					
HRS HIROSE ELECTRIC CO., LTD					