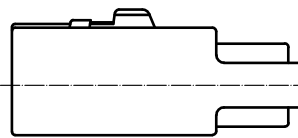
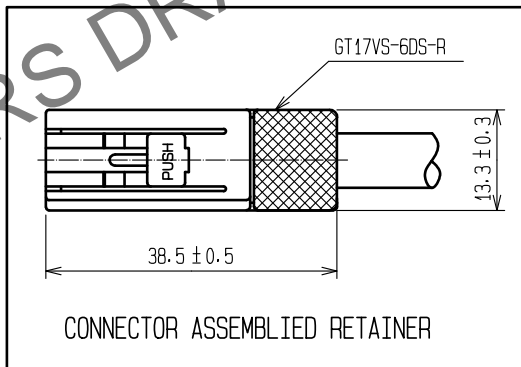
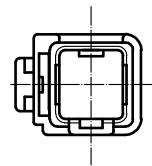
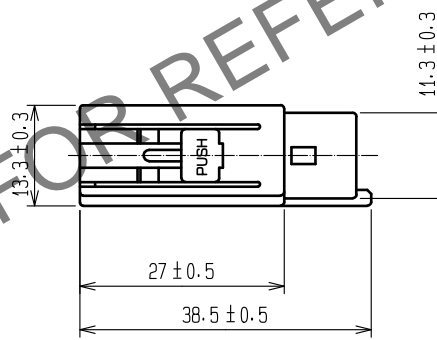
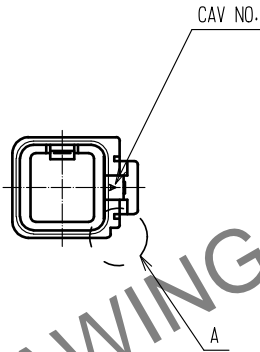
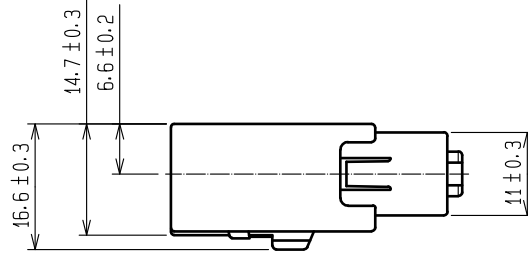
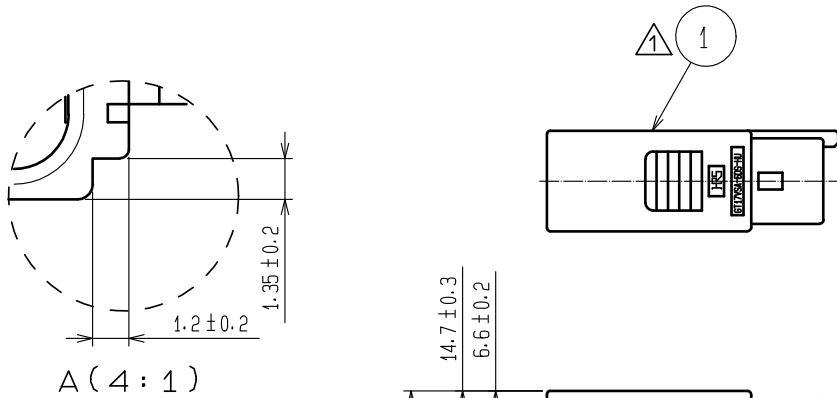


Oct.1.2024 Copyright 2024 HIROSE ELECTRIC CO., LTD. All Rights Reserved.
 In case of consideration for using Automotive equipment / device which demand high reliability, kindly contact our sales window correspondents.

△ ELV, RoHS COMPLIANT



NOTE1. THIS CONNECTOR SHALL BE USED THAT RETAINER (CL767-0053-2) WAS ASSEMBLED.
 2. APPLICABLE CABLE DIA : ϕ 4.8 TO ϕ 5.2

1	PBT	△ BLACK						
NO.	MATERIAL	FINISH	REMARKS	NO.	MATERIAL	FINISH	REMARKS	
UNITS mm		SCALE 1 : 1	COUNT △ 3	DESCRIPTION OF REVISIONS DIS-T-00000765		DESIGNED MH. SHOUJI	CHECKED KI. HIROKAWA	DATE 15.12.16
HRS HIROSE ELECTRIC CO., LTD.	APPROVED	:KS. SATOH		05.01.05	DRAWING NO.	EDC4-165623-00		
	CHECKED	:NH. NAKATA		05.01.05	PART NO.	GT17VSA-6DS-HU		
	DESIGNED	:NA. HARUBAYASHI		05.01.05	CODE NO.	CL767-0052-0-00		
	DRAWN	:TK. SHISHIKURA		05.01.05		△ 1/1		