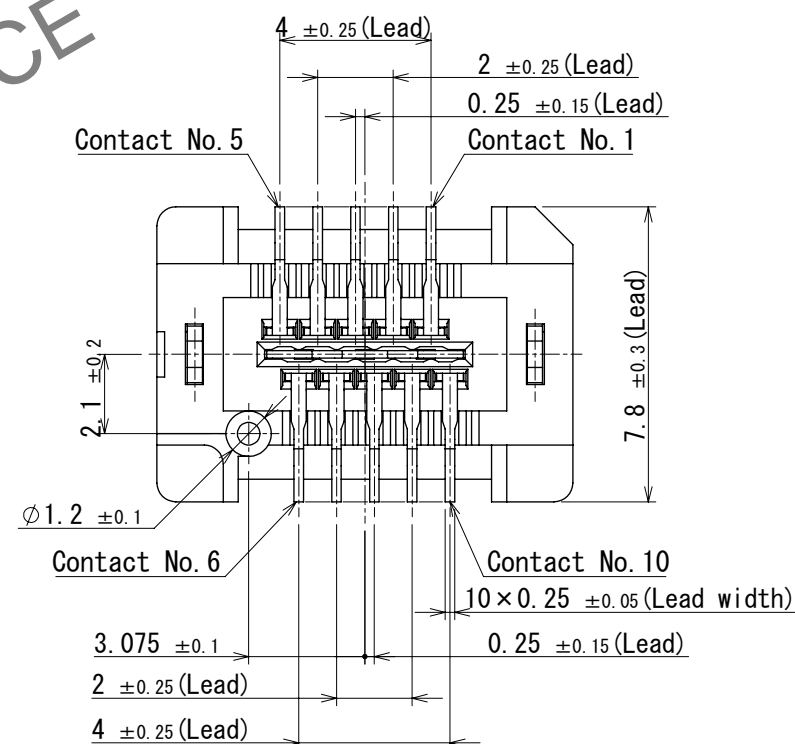
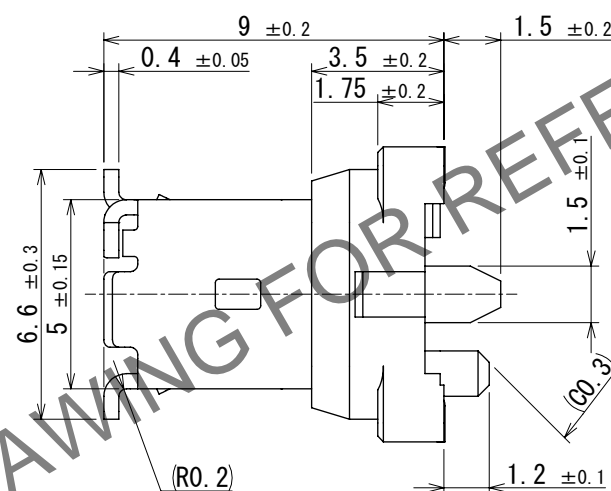
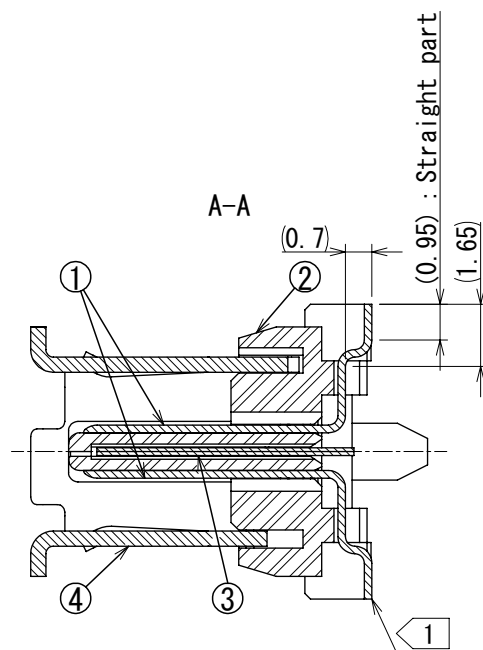
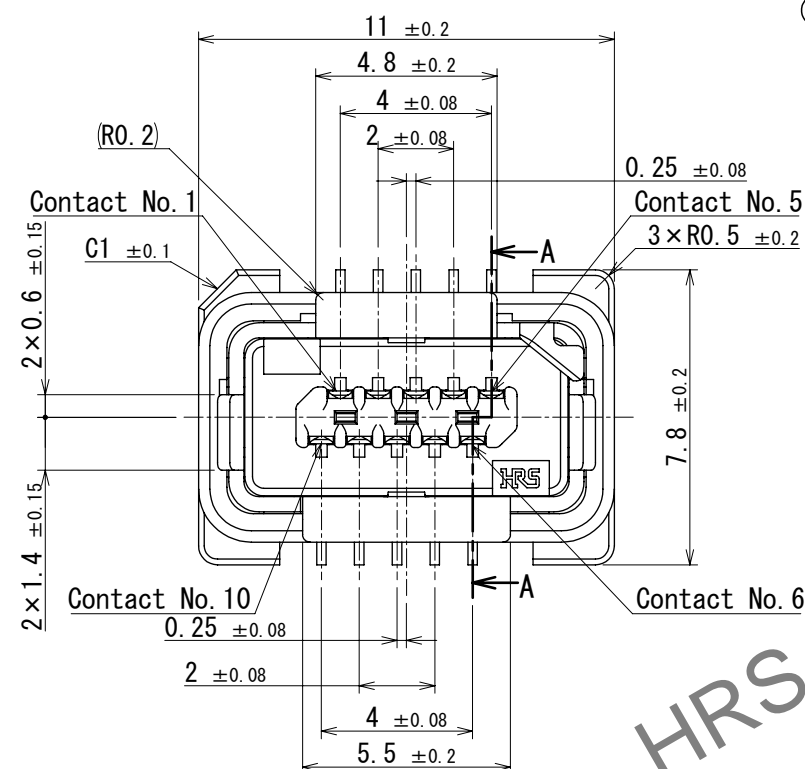
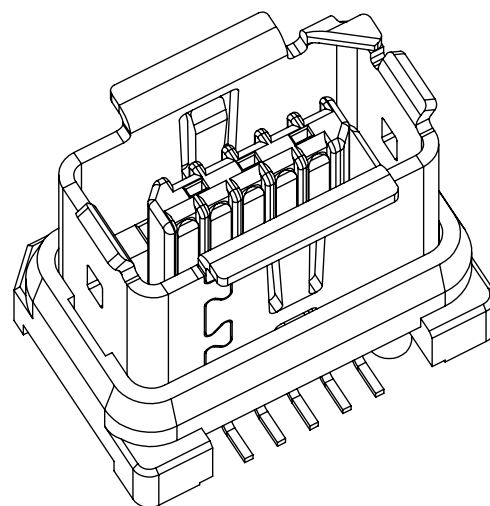



Production Lot

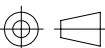

5. This product is mounted by reflow soldering.
Refer to specification sheet ELC-129413-00-00 for reflow soldering.



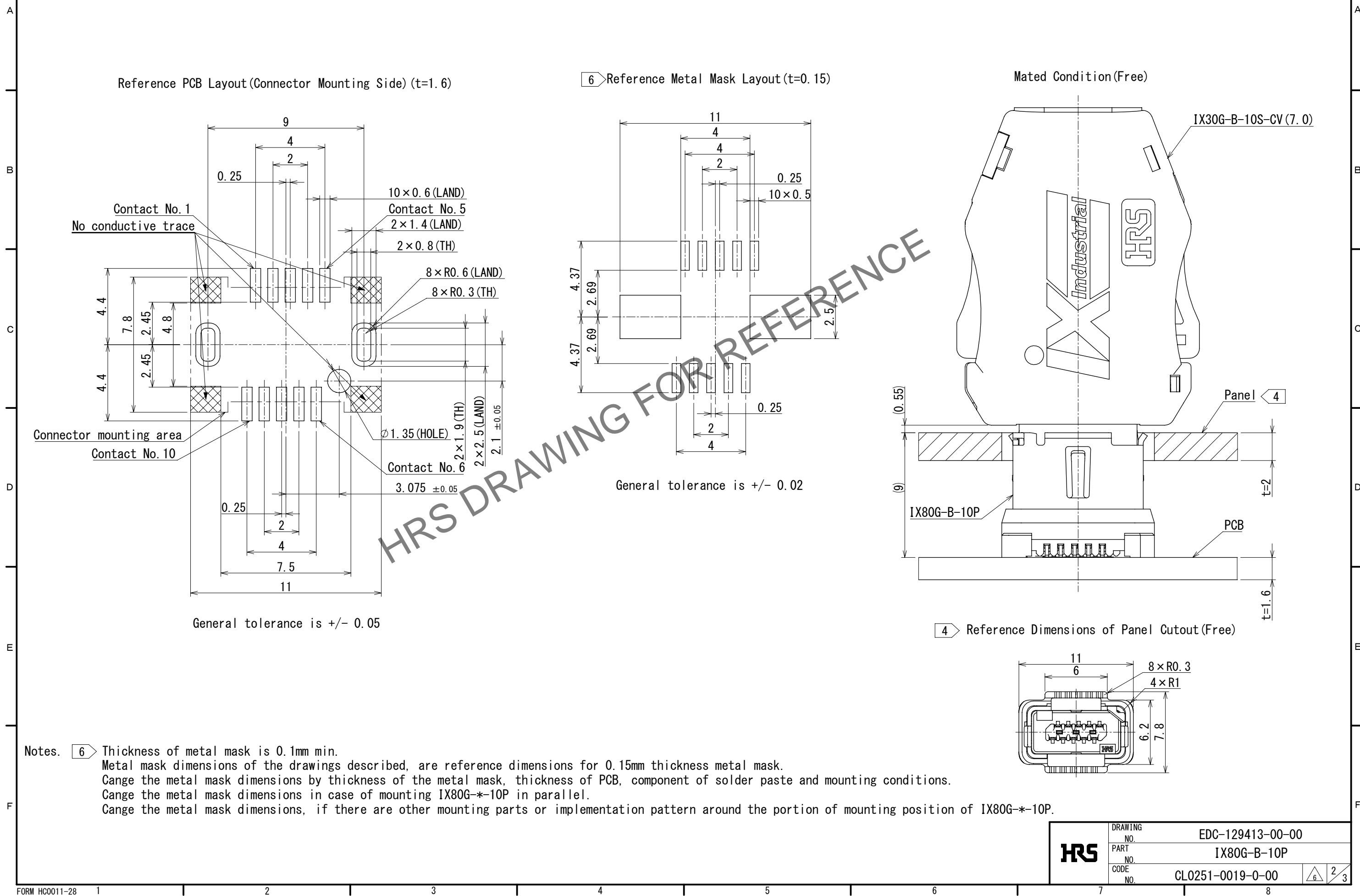
3D image



			7	PET 	
3	Stainless Steel		6	PS	
2	PA	Gray, UL94V-0	5	PA	Black, UL94V-0
1	Copper Alloy	Contact area : Gold 0.2μm min. Lead area : Gold 0.03μm min. Under plating : Nickel 2μm min.	4	Stainless Steel	Surface : Tin 1μm min. Under plating : Nickel 0.2μm min.
NO.	MATERIAL	FINISH , REMARKS	NO.	MATERIAL	FINISH , REMARKS

 HIROSE ELECTRIC CO., LTD.		UNITS mm	SCALE 5:1	 COUNT 3	DESCRIPTION OF REVISIONS DIS-E-00011281	DESIGNED SN. TOYOSHIMA	CHECKED K1. KAGOTANI	DATE 2022. 10. 0
		APPROVED : R1. TAKAYASU 2018. 04. 23		DRAWING NO. EDC-129413-00-00				
		CHECKED : K1. NAGANUMA 2018. 04. 20		PART NO. IX80G-B-10P				
		DESIGNED : YS. SAKODA 2018. 04. 20		NO.				
		DRAWN : YS. SAKODA 2018. 04. 20		CODE NO. CL0251-0019-0-00				
								

May.1.2024 Copyright 2024 HIROSE ELECTRIC CO., LTD. All Rights Reserved.
In case of consideration for using Automotive equipment / device which demand high reliability, kindly contact our sales window correspondents.



May.1.2024 Copyright 2024 HIROSE ELECTRIC CO., LTD. All Rights Reserved.
In case of consideration for using Automotive equipment / device which demand high reliability, kindly contact our sales window correspondents.

