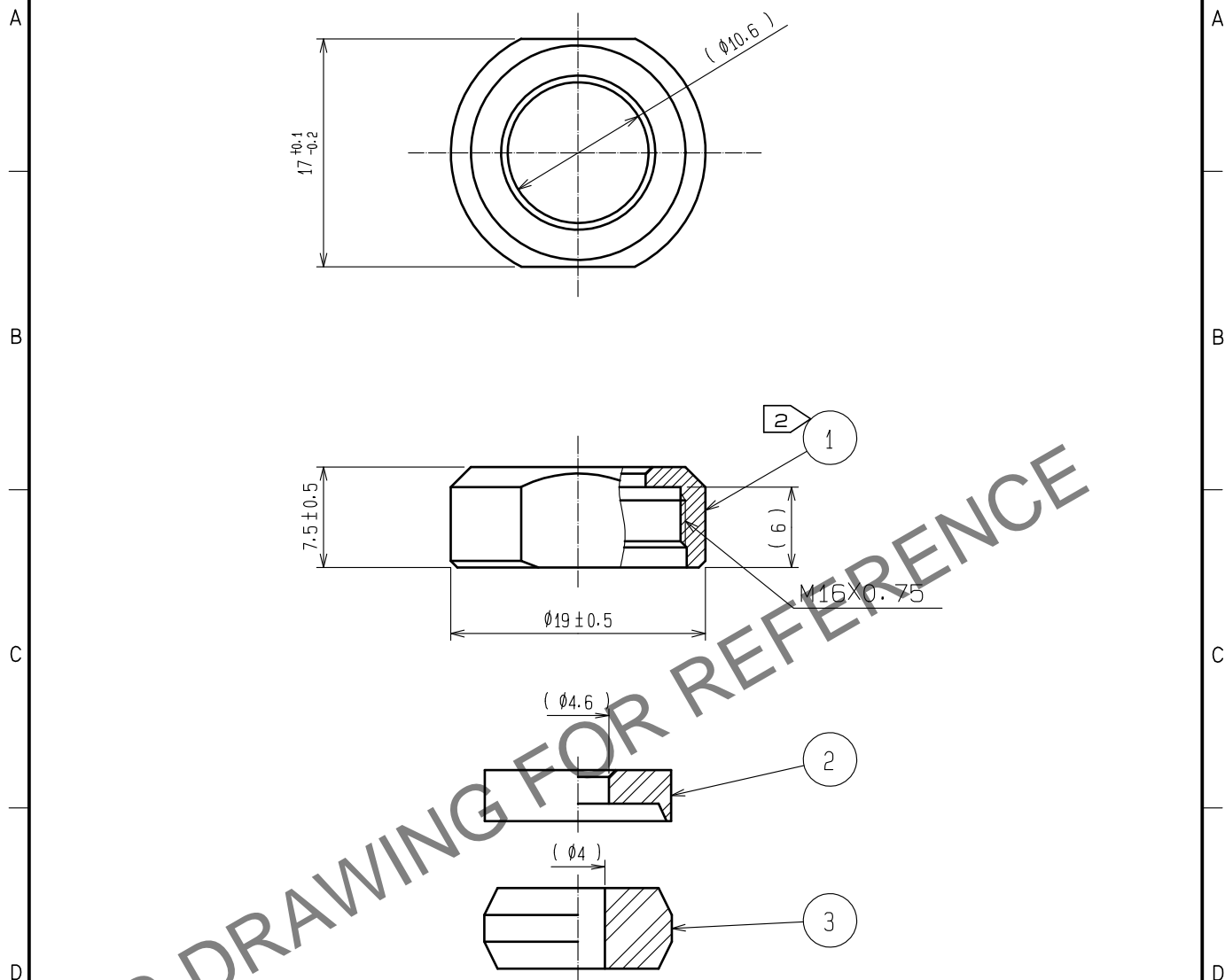


Apr.1.2024 Copyright 2024 HIROSE ELECTRIC CO., LTD. All Rights Reserved.
In case of consideration for using Automotive equipment / device which demand high reliability, kindly contact our sales window correspondents.



NOTES 1 THIS PRODUCT IS DELIVERED DISASSEMBLED.

2 THE RECOMMENDED CLAMP TORQUE OF REF.NO. ① TO BE 2 TO 2.5N・m
LOCTITE 263, HENKEL JAPAN OR EQUIVALENT IS RECOMMENDED TO PREVENT
REF.NO. ① FROM LOOSENING.

2	POLYPHENYLENE SULFIDE	(BLACK) UL94V-0					
1	BRASS	BLACK CHROME PLATING	3	ACRYLONITRILE BUTADIENE RUBBER	(GRAY)		
NO.	MATERIAL	FINISH . REMARKS	NO.	MATERIAL	FINISH . REMARKS		
UNITS mm		SCALE 2 : 1	COUNT 	DESCRIPTION OF REVISIONS	DESIGNED	CHECKED	DATE
HIROSE ELECTRIC CO., LTD.		APPROVED	HY. KOBAYASHI	18. 02. 26	DRAWING NO.	EDC-110618-31-00	
		CHECKED	HY. KOBAYASHI	18. 02. 26	PART NO.	JR13WCCA-4(31)	
		DESIGNED	TH. KAMEYA	18. 02. 23	CODE NO.	CL114-2069-9-31	
		DRAWN	MK. INOUE	18. 02. 14			1/1