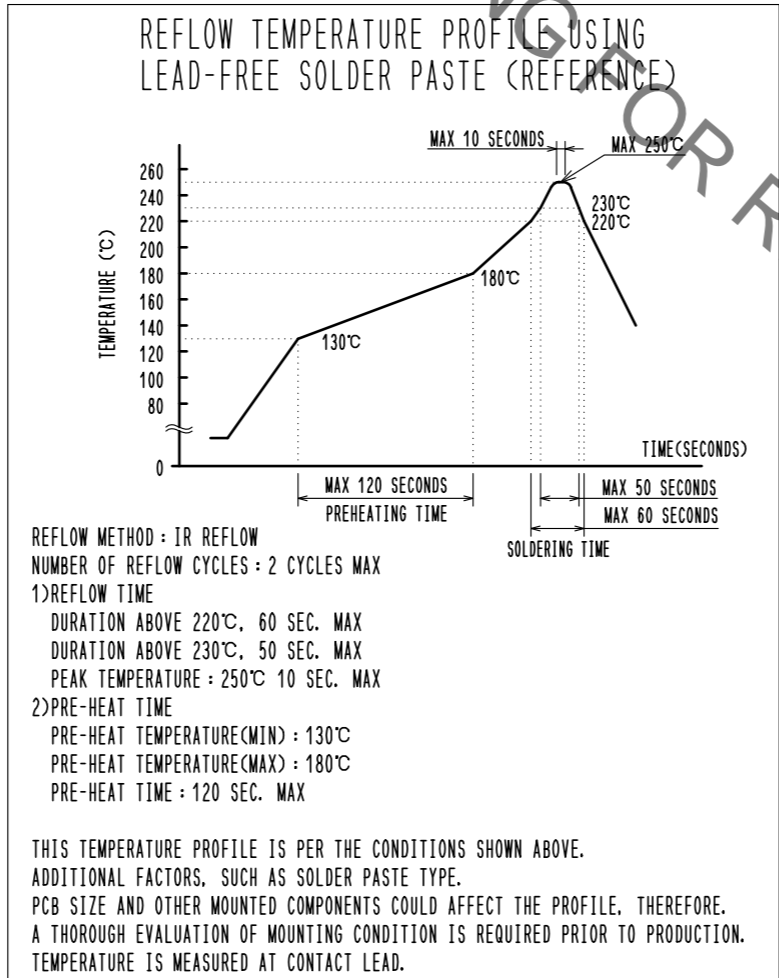
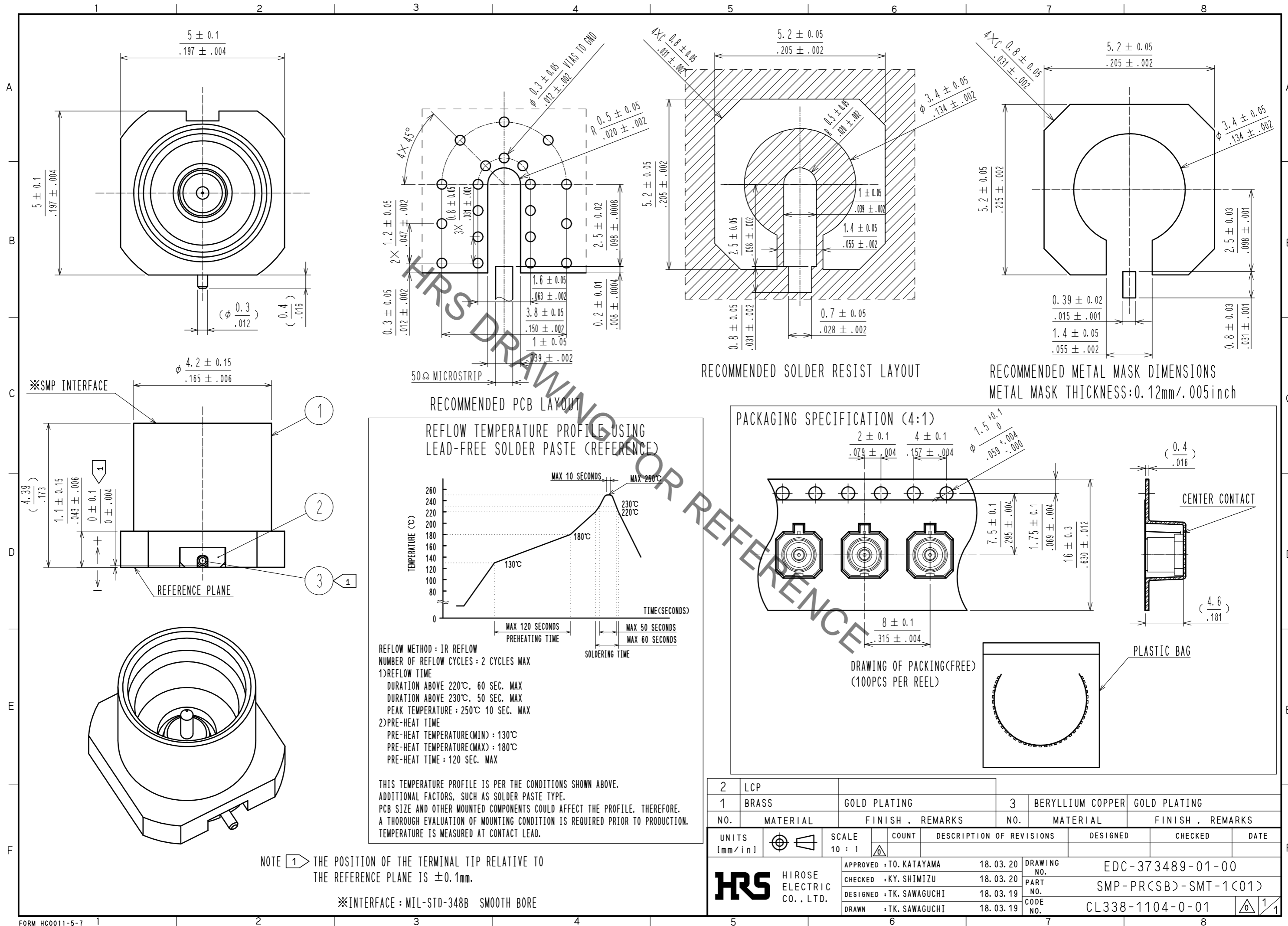


Oct.1.2019 Copyright 2019 HIROSE ELECTRIC CO., LTD. All Rights Reserved.
 In case of consideration for using Automotive equipment / device which demand high reliability, kindly contact our sales window correspondents.



2	LCP			3	BERYLLIUM COPPER	GOLD PLATING			
1	BRASS	GOLD PLATING							
NO.	MATERIAL	FINISH	REMARKS	NO.	MATERIAL	FINISH	REMARKS		
UNITS [mm/in]	⊙	▽	SCALE 10 : 1	△	COUNT	DESCRIPTION OF REVISIONS	DESIGNED	CHECKED	DATE
HRS HIROSE ELECTRIC CO., LTD.		APPROVED : TO. KATAYAMA	18.03.20	DRAWING NO.		EDC-373489-01-00			
		CHECKED : KY. SHIMIZU	18.03.20	PART NO.		SMP-PR(SB)-SMT-1(01)			
		DESIGNED : TK. SAWAGUCHI	18.03.19	CODE NO.		CL338-1104-0-01			
		DRAWN : TK. SAWAGUCHI	18.03.19						