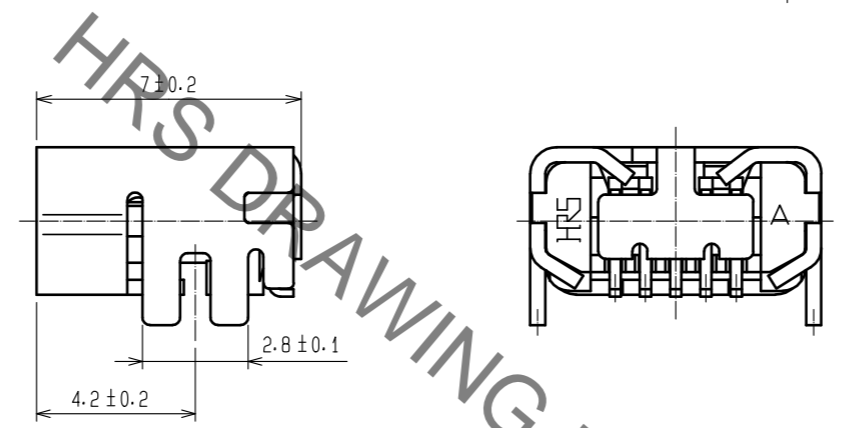
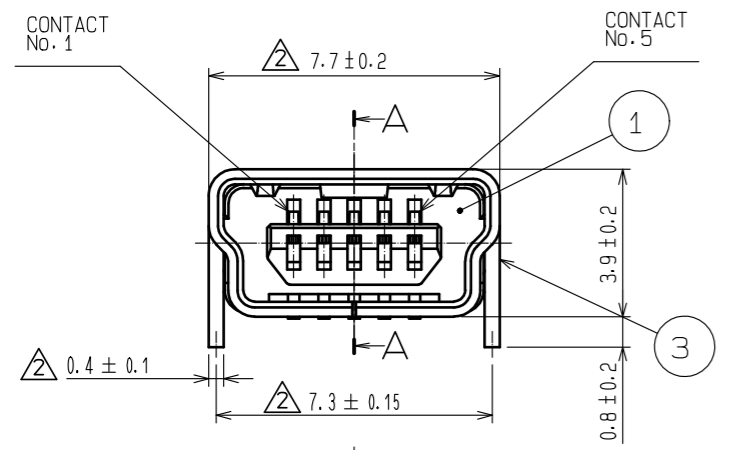
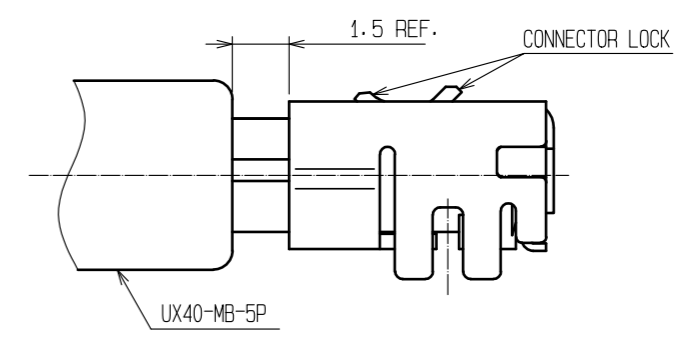
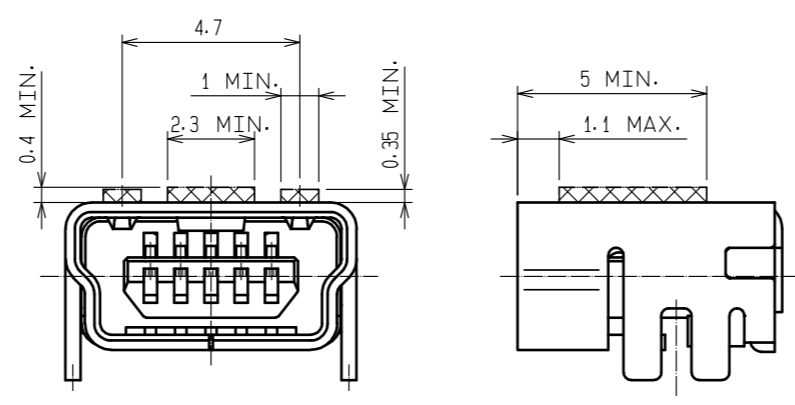
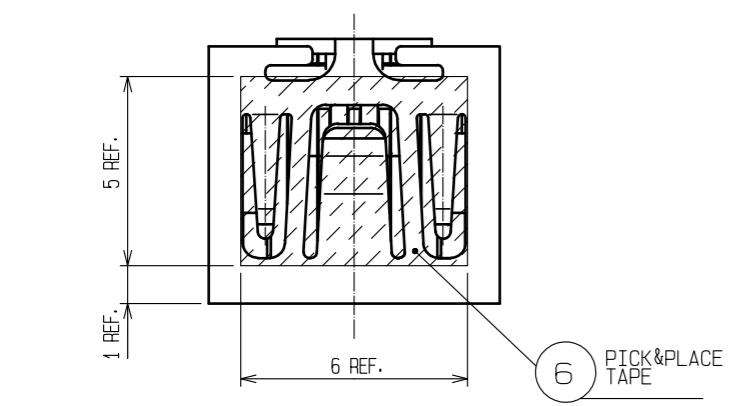


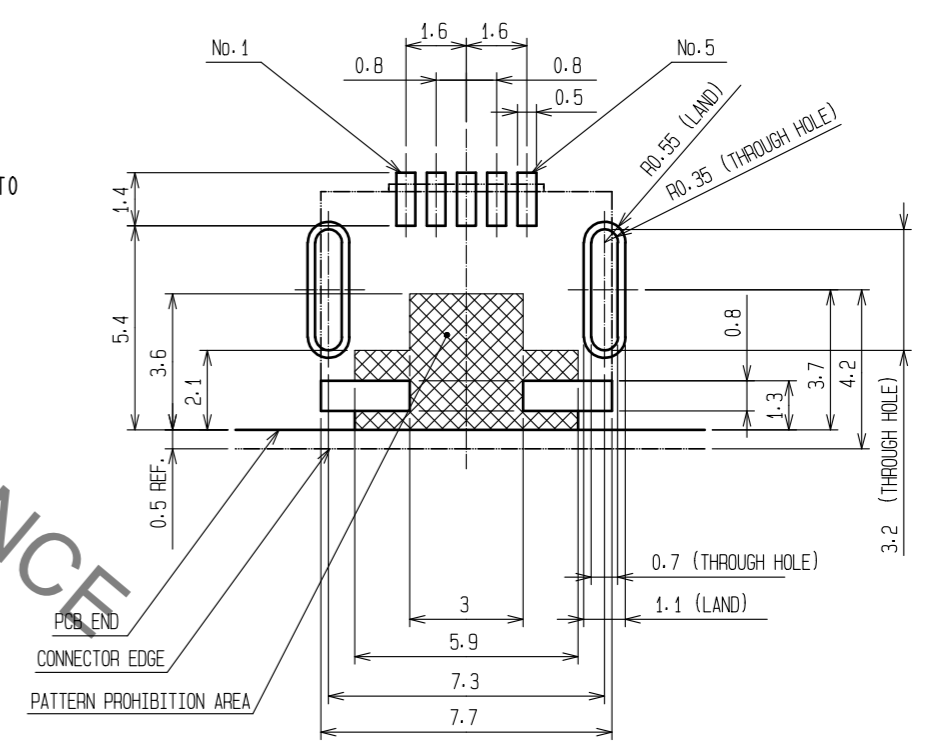
Oct.1.2020 Copyright 2020 HIROSE ELECTRIC CO., LTD. All Rights Reserved.
In case of consideration for using Automotive equipment / device which demand high reliability, kindly contact our sales window correspondents.

REFERENCE CONNECTOR LOCK CLEARANCE AREA

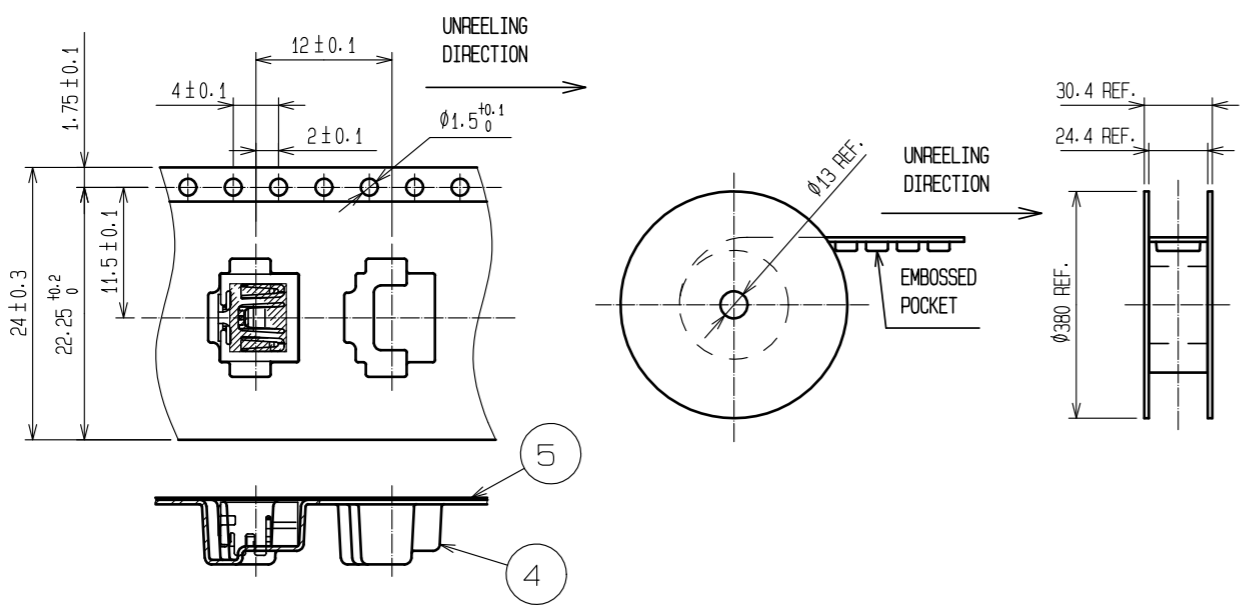
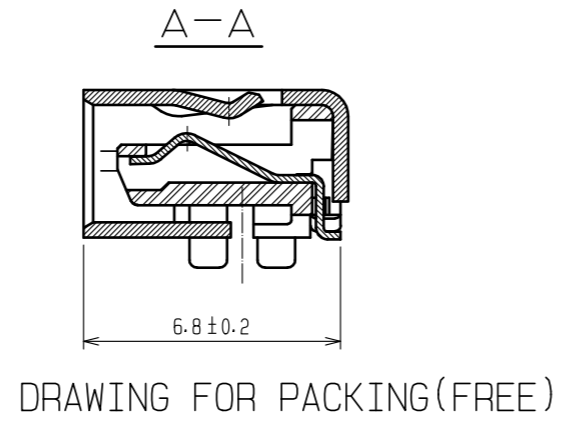
MATING FIGURE



REFERENCE PCB AREA
(CONNECTOR MOUNTING FACE)



- NOTES.
1. INTERFACE DIMENSIONS CONFORM TO USB2.0 STANDARDS.
 2. 1000 PCS PER REEL.
 3. CONTACTS AND METAL SHELL ARE CO-PLANARITY TO BE 0.1 MAX.



NO.	MATERIAL	FINISH . REMARKS	NO.	MATERIAL	FINISH . REMARKS
6	PA	(PICK&PLACE TAPE)	6	PA	(PICK&PLACE TAPE)
5	PE	(TOP COVER TAPE)	5	PE	(TOP COVER TAPE)
4	PS	(EMBOSSED CARRIER TAPE)	4	PS	(EMBOSSED CARRIER TAPE)
3	COPPER ALLOY	SURFACE PLATING : TIN 1 μm MIN. UNDER PLATING : NICKEL 1 μm MIN.	3	COPPER ALLOY	SURFACE PLATING : TIN 1 μm MIN. UNDER PLATING : NICKEL 1 μm MIN.
2	COPPER ALLOY	CONTACT AREA : GOLD 0.75 μm MIN. LEED AREA : GOLD 0.03 μm MIN. UNDER PLATING : NICKEL 1.25 μm MIN.	2	COPPER ALLOY	CONTACT AREA : GOLD 0.75 μm MIN. LEED AREA : GOLD 0.03 μm MIN. UNDER PLATING : NICKEL 1.25 μm MIN.
1	LCP	UL94V-0 COLOR : BLACK	1	LCP	UL94V-0 COLOR : BLACK

UNITS	SCALE	COUNT	DESCRIPTION OF REVISIONS	DESIGNED	CHECKED	DATE
mm	5 : 1	3	DIS-E-00000439	P. EKSOURIYA	NM. NISHIMATSU	16. 01. 16

APPROVED	CHECKED	DESIGNED	DRAWN	DRAWING NO.	PART NO.	CODE NO.
NF. MIYAZAKI	NF. MIYAZAKI	HS. KIKUCHI	HS. KIKUCHI	EDC3-126060-01	UX60SC-MB-5S8(80)	CL240-0020-3-80
09. 02. 25	09. 02. 25	09. 02. 25	09. 02. 25			