



The products depicted in this brochure are a sampling of the many connector solutions manufactured by Hirose. For details on these products and to view our full line of connectors, please visit our website.

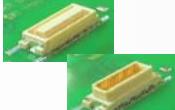
A

Camera Module

Board to Board

DF12
DF17
DF37
DF40
KN13
BM20
BM15FR
BM23
BM24


Pitch: 0.5mm
Height: 3.0 to 5.0 mm
Depth: 4.6mm



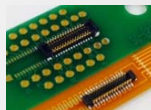
Pitch: 0.5mm
Height: 4.0 to 8.0 mm
Depth: 5.7mm



Pitch: 0.4 mm
Height: 0.98/1.5 mm
Depth: 2.98 mm



Pitch: 0.4 mm
Height: 1.5 to 4.0 mm
Depth: 3.38 mm



Pitch: 0.4 mm
Height: 0.8 mm
Depth: 2.5 mm



Pitch: 0.4 mm
Height: 0.6/0.8 mm
Depth: 2.3 mm



Pitch: 0.35 mm
Height: 0.7/0.8/1.0 mm
Depth: 1.98 mm



Pitch: 0.35 mm
Height: 0.6/0.8 mm
Depth: 1.98 mm



Pitch: 0.35 mm
Height: 0.8 mm
Depth: 2.3 mm
Power & Signal

B

Internal Connection

Board to FPC

FH28

Front flip

FH52

Front flip

FH34S

Back flip

TF31

Front flip

FH26

Front flip

FH35C

Back flip

FH42

Back flip

FH53(M)

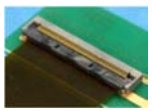
Back flip

FH43B

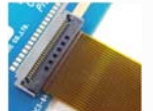
Front flip

FH58

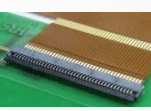
Back flip



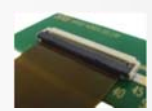
Pitch: 0.5 mm
Height: 2.55 mm
Depth: 6.4 mm



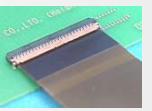
Pitch: 0.5 mm
Height: 2.0 mm
Depth: 7.2 mm



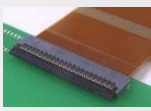
Pitch: 0.5 mm
Height: 1.0 mm
Depth: 3.8 mm



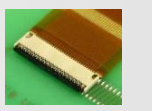
Pitch: 0.5/1.0 mm
Height: 1.75/2.0 mm
Depth: 5.7 mm



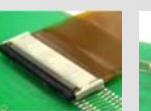
Pitch: 0.3 mm
Height: 1.0 mm
Depth: 3.5 mm



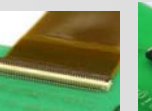
Pitch: 0.3 mm
Height: 0.9 mm
Depth: 4.2 mm



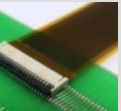
Pitch: 0.3 mm
Height: 0.65 mm
Depth: 3.08 mm



Pitch: 0.2/0.25 mm
Height: 0.65 mm
Depth: 3.2 mm



Pitch: 0.2 mm
Height: 0.9 mm
Depth: 2.77 mm



Pitch: 0.2 mm
Height: 0.9 mm
Depth: 3.1 mm

Board to Wire

DF11

Double Row

DF13

 Wide Variety,
DIP/SMT

DF14

 Right Angle,
Low Profile

DF65

Small, Low Profile

DF57H

Swing Lock, Low Profile

DF50

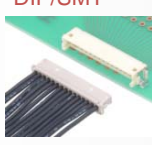
Positive Lock

DF52

Small & Robust



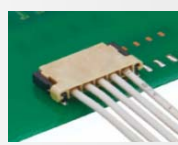
Pitch: 2.0 mm
Rated Current:
2 Amps MAX.



Pitch: 1.25 mm
Rated Current:
1 Amp MAX.



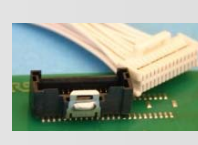
Pitch: 1.25 mm
Rated Current:
1 Amp MAX.



Pitch: 1.7 mm
Mated Height: 1.8 mm
Rated Current:
4 Amps MAX.



Pitch: 1.2 mm
Mated height: 1.4 mm
Rated Current:
2.5 Amps MAX.



Pitch: 1.0 mm
Rated Current:
1 Amp MAX.



Pitch: 0.8 mm
Rated Current:
2.5 Amps MAX.

C

Battery

Board to Board

FX30B series

Floating Connector



Pitch: 3.81 mm
Rated Current:
17 Amps MAX.

Board to Wire

DF60 series

 45 Amps
Power Supply


Pitch: 10.16 mm
Rated Current:
45 Amps MAX.

DF22 series

 30 Amps
Power Supply


Pitch: 7.92 mm
Rated Current:
30 Amps MAX.

DF63 series

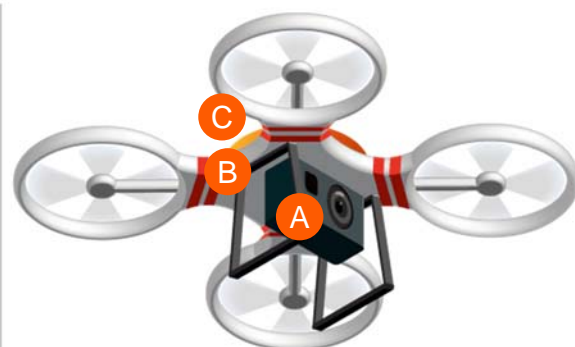
 15 Amps
Power Supply


Pitch: 3.96 mm
Rated Current:
15 Amps MAX.

DF33 series

 5 Amps
Power Supply


Pitch: 3.3 mm
Rated Current:
5 Amps MAX.



D Inline

Wire to Wire

DF62
Slim In-line



Rated Current:
4 Amps MAX.

DF62W
Water Resistant (IP67)



Rated Current:
3 Amps MAX.

DF63W
Water Resistant(IP67)




Rated Current:
14 Amps MAX.

E Interface


I/O & Card

CX
USB Type C




Transmission Speed:
5 Gbps
Small, Hybrid Type (SMD +DIP)

ZX360
Micro USB 3.0




Transmission Speed:
5 Gbps
Applicable Cable:
28 AWG wire

ST
Space Saving I/O Connector



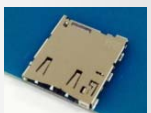
Pitch: 0.5 mm
Height: 3.0 mm
Depth: 20.0 mm

KP10BH
Micro SIM Card Socket




Push-Pull Type
Height: 1.25 mm

KP13B
nano SIM Card Socket

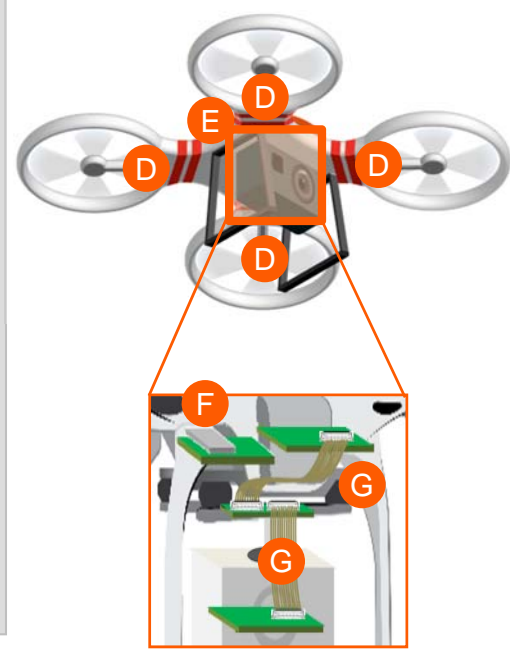


Push-Push Type
Height: 1.18 mm

DM3NW
Ultra Low Profile micro SD




Push-Push Type
Height: 1.15 mm



F Antenna Module


RF Connector

U.FL




Mated height:
1.9 mm (2.0 mm MAX.)
Applicable Cable:
φ 0.81 mm
Mated height:
2.4 mm (2.5 mm MAX.)
Applicable Cable:
φ 0.81/1.13/1.32 mm

W.FL




Mated height:
1.4 mm (1.55 mm MAX.)
Applicable Cable:
φ 0.81/1.0 mm

W.FL2



Mated height:
1.18 mm (1.3 mm MAX.)
Applicable Cable:
φ 0.5/0.64/0.81/1.0 mm


X.FL



Mated height:
0.94 mm (1.0 mm MAX.)
Applicable Cable:
φ 0.5/0.64/0.81 mm
Mated height:
1.2 mm (1.3 mm MAX.)
Applicable Cable:
φ 1.13 mm


RF Switch

MS-156C



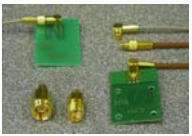
Size: 2.3 x 2.3 mm
Height: 1.35 mm
Frequency: DC to 11 GHz

MS-180



Size: 1.8 x 1.8 mm
Height: 0.85 mm
Frequency: DC to 11 GHz

MMCX



V.S.W.R. 1.2 MAX. at DC to 6 GHz
SMT type Receptacle:
1.2 MAX. up to 4 GHz
1.3 MAX. at 4 to 6 GHz
Cable assembly with H.FL available

G PCB Connection(High Speed Transmission)

Board to Board

DF40G
Shielded Micro BtoB



Pitch: 0.4 mm
Height: 1.5/3.0 mm
Depth: 3.38 mm

Board to FPC

FH55/FH55M
Back flip



Pitch: 0.4/0.5 mm
Height: 1.5 mm
Transmission Speed:
5 Gbps

Micro Coaxial Connector

DF56
Vertical



Pitch: 0.3 mm
Height: 1.25 mm
Depth: 2.6 mm

DF81
Horizon



Pitch: 0.4 mm
Height: 0.9 mm
Depth: 4.4 mm

FX18
Floating Connector



Pitch: 0.8 mm
Height: 10 to 45 mm
Transmission Speed:
10 Gbps

FX23



Pitch: 0.5 mm
Height:
15 to 30 mm
Transmission Speed:
8 Gbps

DF36A
Vertical



Pitch: 0.4 mm
Height: 1.5 mm
Depth: 4.4 mm

DF38
Vertical



Pitch: 0.3 mm
Height: 1.5 mm
Depth: 3.7 mm

For more information about Hirose products:

<p>[JAPAN]</p> <p>[CHINA] (Shanghai) (Beijing) (Shenzhen)</p> <p>[HONG KONG]</p> <p>[TAIWAN]</p> <p>[KOREA]</p> <p>[SINGAPORE]</p> <p>[INDIA] (Delhi) (Bangalore)</p> <p>[MALAYSIA]</p>	<p>http://www.hirose.com/</p> <p>TEL: 81-(0)45-620-3256</p> <p>TEL: 86-21-6391-3355</p> <p>TEL: 86-10-5165-9332</p> <p>TEL: 86-755-8207-0851</p> <p>TEL: 852-2803-5338</p> <p>TEL: 886-2-2555-7377</p> <p>TEL: 82-31-496-7000, 7124</p> <p>TEL: 65-6324-6113</p> <p>TEL: 91-12-660-8018</p> <p>TEL: 91-80-4120-1907</p> <p>TEL: 604-619-2564</p>	<p>[THAILAND]</p> <p>[USA] (San Jose) (Chicago) (Detroit) (Automotive)</p> <p>[Europe] (The Netherlands) (German) (Nuernberg) (Hanover) (Paris) (UK) (Finland)</p>	<p>TEL: 66-2-686-1255</p> <p>TEL: 1-408-253-9640</p> <p>TEL: 1-630-282-6701</p> <p>TEL: 1-734-542-9963</p> <p>TEL: 31-20-6557460</p> <p>TEL: 49-711-4560-02-1</p> <p>TEL: 49-911 32 68 89 63</p> <p>TEL: 49-511 97 82 61 30</p> <p>TEL: 33 (0) 1 7082 3170</p> <p>TEL: 44-1908-202050</p> <p>TEL: 358-50 432 8131</p>
---	---	--	---