

REFLOW METHOD : IR REFLOW
 NUMBER OF REFLOW CYCLES : 2 CYCLES MAX
 1)REFLOW TIME
 DURATION ABOVE 220°C. 60 SEC. MAX
 DURATION ABOVE 230°C. 50 SEC. MAX
 PEAK TEMPERATURE : 250°C 10 SEC. MAX
 2)PRE-HEAT TIME
 PRE-HEAT TEMPERATURE(MIN) : 130°C
 PRE-HEAT TEMPERATURE(MAX) : 180°C
 PRE-HEAT TIME : 120 SEC. MAX

THIS TEMPERATURE PROFILE IS PER THE CONDITIONS SHOWN ABOVE.
 ADDITIONAL FACTORS, SUCH AS SOLDER PASTE TYPE,
 PCB SIZE AND OTHER MOUNTED COMPONENTS COULD AFFECT THE PROFILE. THEREFORE,
 A THOROUGH EVALUATION OF MOUNTING CONDITION IS REQUIRED PRIOR TO PRODUCTION.
 TEMPERATURE IS MEASURED AT CONTACT LEAD.

NOTE 1 THE POSITION OF THE TERMINAL TIP RELATIVE TO THE REFERENCE PLANE IS ±0.1mm.

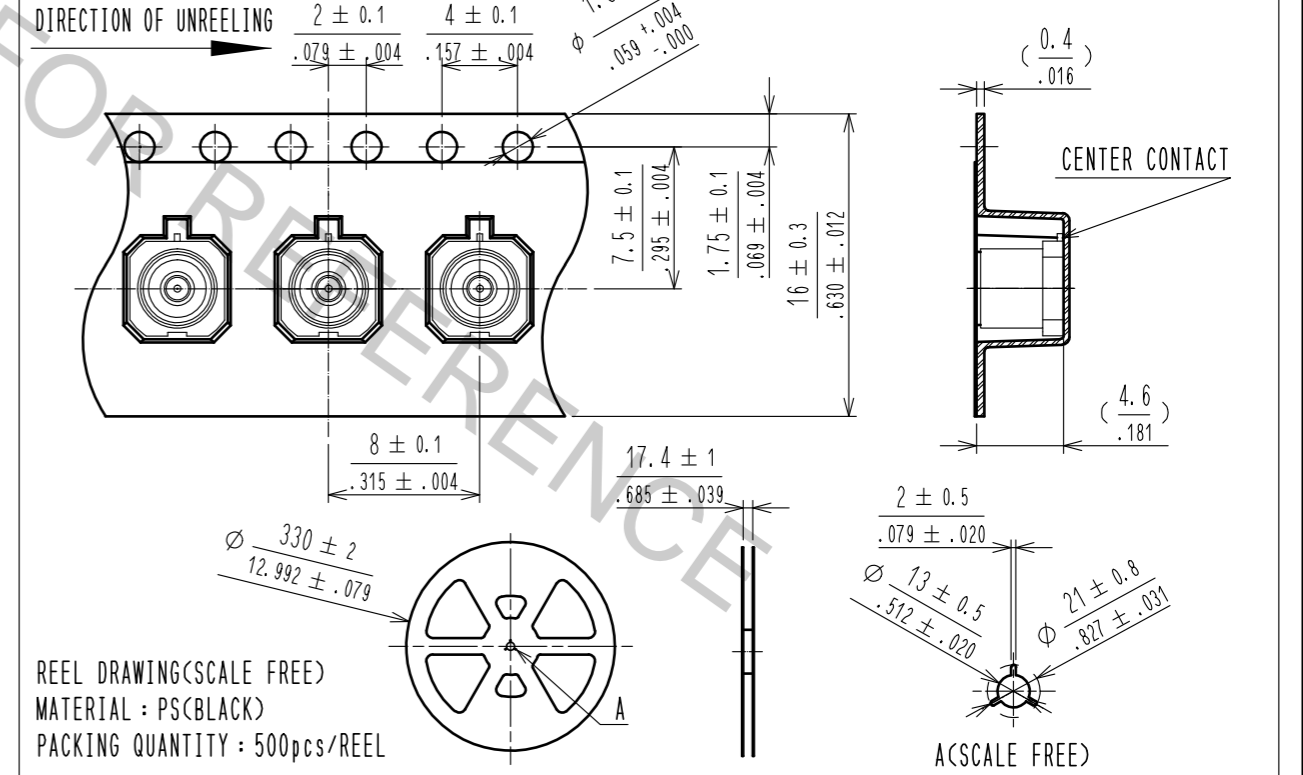
*INTERFACE : MIL-STD-348B LIMITED DETENT

RoHS COMPLIANT

RECOMMENDED SOLDER RESIST LAYOUT

RECOMMENDED METAL MASK DIMENSIONS
 METAL MASK THICKNESS:0.12mm/.005inch

EMBOSSED TAPING DRAWING (4:1)



REEL DRAWING(SCALE FREE)
 MATERIAL : PS(BLACK)
 PACKING QUANTITY : 500pcs/REEL

2	LCP		3	BERYLLIUM COPPER	GOLD PLATING		
1	BRASS	GOLD PLATING					
NO.	MATERIAL	FINISH	REMARKS	NO.	MATERIAL	FINISH	REMARKS
UNITS	[mm/in]	SCALE	10 : 1	COUNT	3	DESCRIPTION OF REVISIONS	DIS-D-00002499
DESIGNED	TK. SAWAGUCHI	CHECKED	KY. SHIMIZU	DATE	17. 10. 06	DRAWING NO. EDC-373488-00-00	
DESIGNED	TK. SAWAGUCHI	CHECKED	KY. SHIMIZU	PART NO. SMP-PR(LD)-SMT-1			
DRAWN	TK. SAWAGUCHI	CHECKED	KY. SHIMIZU	CODE NO. CL338-1103-0-00			