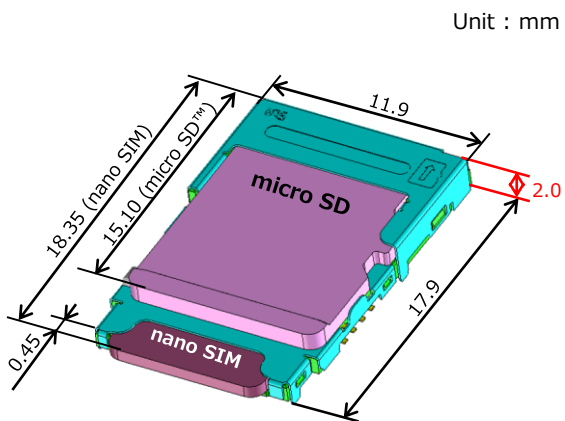


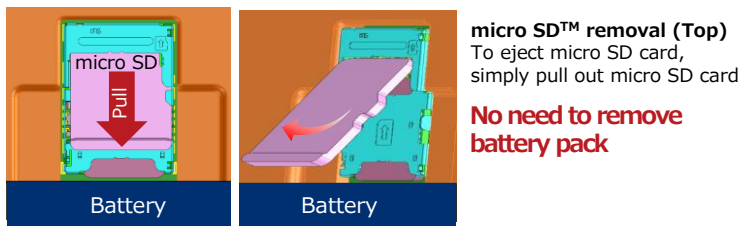
### Features

- 1 Combo socket for nano SIM & micro SD™ cards produces a space saving design (Top slot : micro SD card, bottom slot : nano SIM card)
- 2 User friendly card removal design with top and bottom slot
- 3 Easy inspection with exposed contact design
- 4 User-friendly reverse card insertion prevention
- 5 Card detection switch for microSD and nano SIM cards

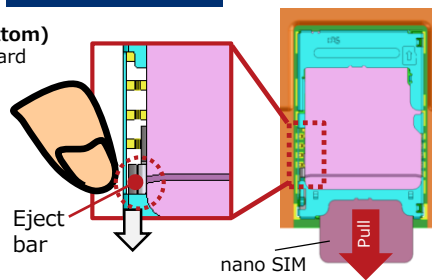
### Dimensions



### User friendly card removal design



**nano SIM removal (Bottom)**  
Easy to eject nano SIM card by simply sliding eject bar with a finger  
**No need to remove upper card**



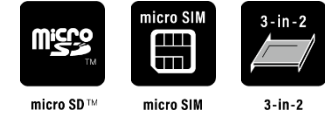
### Specifications

Contact Resistance	100mΩ Max.
Withstanding Voltage	500V AC for 1 minute
Mold Resistance	1,000MΩ Min. (500V DC)
Rated Current	0.5A
Rated Voltage	10V AC
Operating Temperature	-30℃ to +85℃
Mating cycles	10,000 times (micro SD) 5,000 times (nano Sim)

• RoHS compliant, Halogen-free product\*

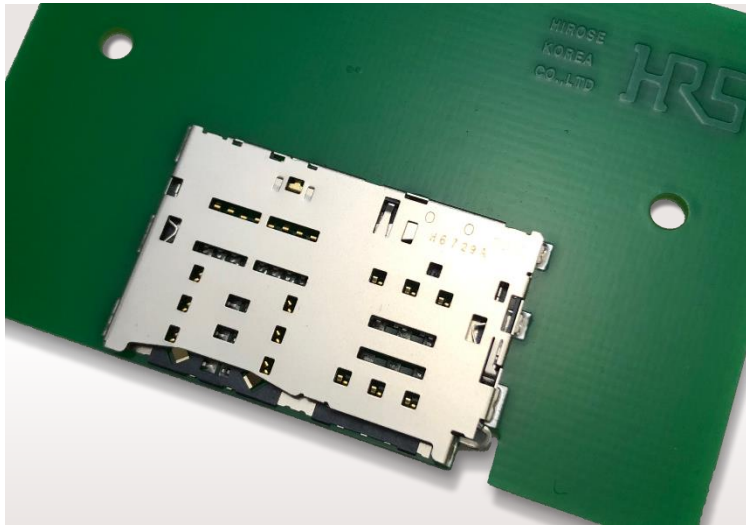
\*This product satisfies halogen free requirements defined as 900ppm maximum chlorine, 900ppm maximum bromine, and 1500ppm maximum total of chlorine and bromine

※ Please contact Hirose's sales representative prior to adopting the products to in-vehicle devices.



**Features**

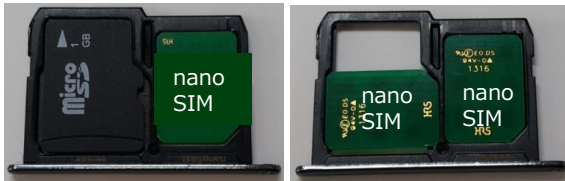
- 1 Easy to remove tray with eject pin
- 2 3 in 2 hybrid design provides various usage patterns.
- 3 Buckling prevention eliminates contact damage
- 4 Enhanced durability with ample eject bar thickness (40N)
- 5 Card detection switch



**Dual card use design**

**Combo Type**      **Dual Sim card Type**

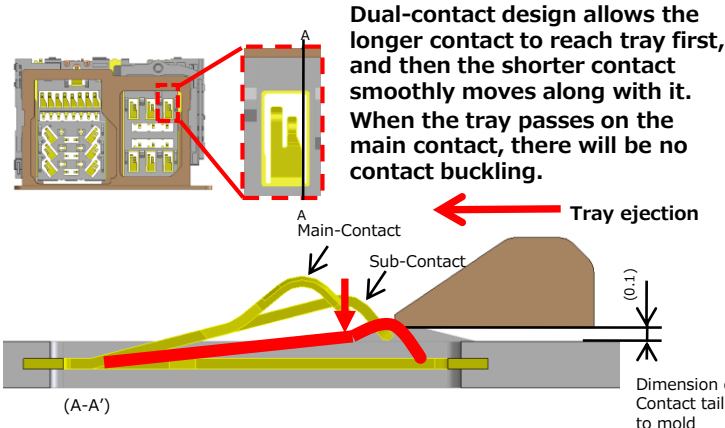
micro SD™ + nano SIM      nano SIM × 2



⇒ Can be use in 2 cards patterns

\*Note : Tray is not included and should be prepared by customers.

**Buckling prevention design**



**Specifications**

Contact Resistance	100mΩ Max.
Withstanding Voltage	500V AC for 1 minute
Mold Resistance	1000MΩ Min. (500V DC)
Rated Current	0.5A
Rated Voltage	10V AC
Operating Temperature	-30°C to +85°C
Mating cycles	3,000 times

- RoHS compliant, Halogen-free product\*  
 \*This product satisfies halogen free requirements defined as 900ppm maximum chlorine, 900ppm maximum bromine, and 1500ppm maximum total of chlorine and bromine
- ✗ Please contact Hirose's sales representative prior to adopting the products to in-vehicle devices.