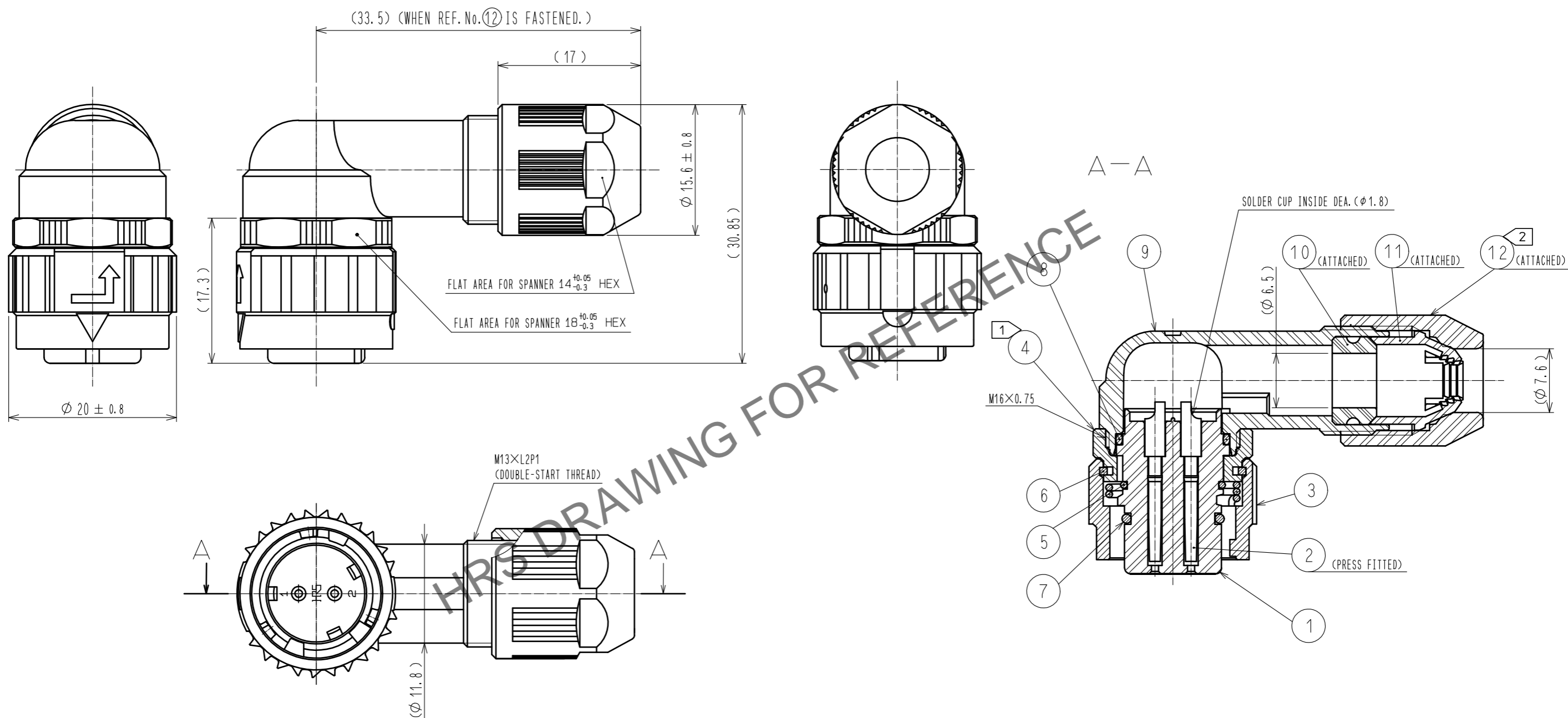


Sep.1.2024 Copyright 2024 HIROSE ELECTRIC CO., LTD. All Rights Reserved.  
In case of consideration for using Automotive equipment / device which demand high reliability, kindly contact our sales window correspondents.



- NOTES
- 1 THE RECOMMENDED TIGHTENING TORQUE OF REF. NO. ④: 0.9 TO 1 N·m.  
THE RECOMMENDED ADHESIVE AND PRIMER OF REF. NO. ④: LOCTITE 243 AND LOCK PRIMER 7649 MADE BY HENKEL JAPAN LTD.
  - 2 THE RECOMMENDED TIGHTENING TORQUE OF REF. NO. ⑫: 0.9 TO 1 N·m.  
THE RECOMMENDED ADHESIVE AND PRIMER OF REF. NO. ⑫: LOCTITE 243 AND LOCK PRIMER 7649 MADE BY HENKEL JAPAN LTD.
  - 3 ROTATION EXAMPLE ARE SHOWN FOR REF. NO. ①, ④, ⑨, AND ⑫.
  - 4 THE CABLE PULL FORCE, TWISTING STRENGTH, WATERPROOF TIGHTNESS AND OTHER CHARACTERISTICS MAY DIFFER, DEPENDING ON CABLE SPECIFICATIONS AND STRUCTURE. PLEASE EVALUATE UNDER THE ACTUAL CONDITIONS PRIOR TO THE USE.

| 6   | PHOSPHOR BRONZE       | NICKEL PLATING  |     |  |                  |
|-----|-----------------------|---|-----|--|------------------|
| 5   | STAINLESS STEEL       |   | 12  | POLYPHENYLENE SULFIDE                        | (BLACK) UL94V-0  |
| 4   | ZINC ALLOY            | NICKEL PLATING  | 11  | POLYAMIDE                                    | (WHITE) UL94V-0  |
| 3   | ZINC ALLOY            | NICKEL PLATING  | 10  | HYDROGENATION ACRYLONITRILE BUTADIENE RUBBER | (BLACK)          |
| 2   | PHOSPHOR BRONZE       | CONTACT AREA : GOLD 0.2μm min.<br>UNDER PLATING : NICKEL 2μm min. | 9   | POLYAMIDE                                    | (BLACK) UL94V-0  |
| 1   | POLYPHENYLENE SULFIDE | (BLACK) UL94V-0   | 8   | ACRYLONITRILE BUTADIENE RUBBER               | (BLACK)          |
|     |                       |   | 7   | ACRYLONITRILE BUTADIENE RUBBER               | (BLACK)          |
| NO. | MATERIAL              | FINISH . REMARKS  | NO. | MATERIAL                                     | FINISH . REMARKS |

| UNITS                    | SCALE | COUNT | DESCRIPTION OF REVISIONS | DESIGNED                     | CHECKED | DATE |
|--------------------------|-------|-------|--------------------------|------------------------------|---------|------|
| mm                       | 2 : 1 | 1     |                          |                              |         |      |
| APPROVED : HY. KOBAYASHI |       |       | 18.02.26                 | DRAWING NO. EDC-117786-31-00 |         |      |
| CHECKED : HY. KOBAYASHI  |       |       | 18.02.26                 | PART NO. HR08D-12WLP-2S(31)  |         |      |
| DESIGNED : DS. MATSUNE   |       |       | 18.02.24                 | CODE NO. CL108-0273-2-31     |         |      |
| DRAWN : AI. NISHIYAMA    |       |       | 18.02.22                 |                              |         |      |