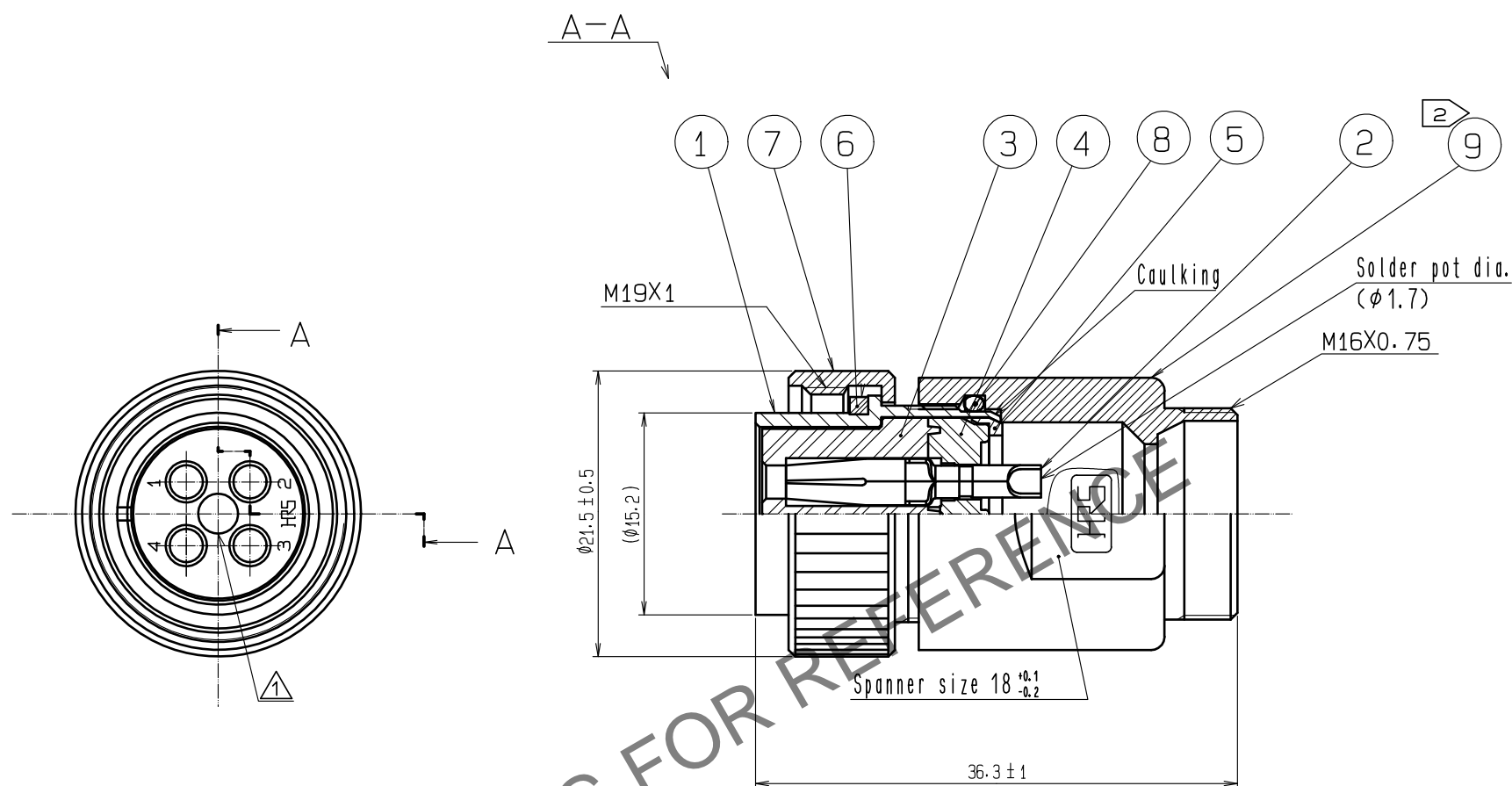


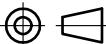
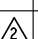

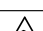


May.1.2024 Copyright 2024 HIROSE ELECTRIC CO., LTD. All Rights Reserved.  
In case of consideration for using Automotive equipment / device which demand high reliability, kindly contact our sales window correspondents.



- Notes
- 1 Rotation examples of ref. No. ② to ref. No. ① is shown
  - 2 The recommended clamp torque of ref. No. ⑨ : 3 N·m.  
LOCTITE 243, HENKEL JAPAN or equivalent is recommended to prevent ref. No. ⑨ from loosening.
  - 3 This products to be used with cable clamp JR13WCC-\*(72)  
\* designate diameter of applicable cable.
  - 4 The cable pull and twisting strength, waterproof tightness and other characteristic may differ,  
depending on the cable structure.  
Please confirm before the use.

5	POLYACETAL	(WHITE)									
4	PPS	(BLACK)	UL94V-0	9	ZINC ALLOY	CHROME PLATING					
3	PPS	(BLACK)	UL94V-0	8	SILICONE RUBBER 	(BLACK)					
2	COPPER ALLOY	SURFACE : GOLD PLATING 0.2 μm min. UNDER : NICKEL PLATING 3 μm min.		7	BRASS	CHROME PLATING					
1	ZINC ALLOY	CHROME PLATING		6	SILICONE RUBBER 	(RED)					
NO.	MATERIAL	FINISH , REMARKS		NO.	MATERIAL	FINISH , REMARKS					
UNITS mm				SCALE 2 : 1		COUNT 2	DESCRIPTION OF REVISIONS DIS-C-00007430		DESIGNED TY. SUZUKI	CHECKED HY. KOBAYASHI	DATE 20210803
 HIROSE ELECTRIC CO., LTD.		APPROVED : HY. KOBAYASHI		20151106		DRAWING NO. EDC-110908-82-00					
		CHECKED : HY. KOBAYASHI		20151106		PART NO. RM15WTPZ-4S(82)					
		DESIGNED : KN. IKEHARA		20151106		CODE NO. CL0109-1612-8-82					
		DRAWN : KN. IKEHARA		20151106		 1					