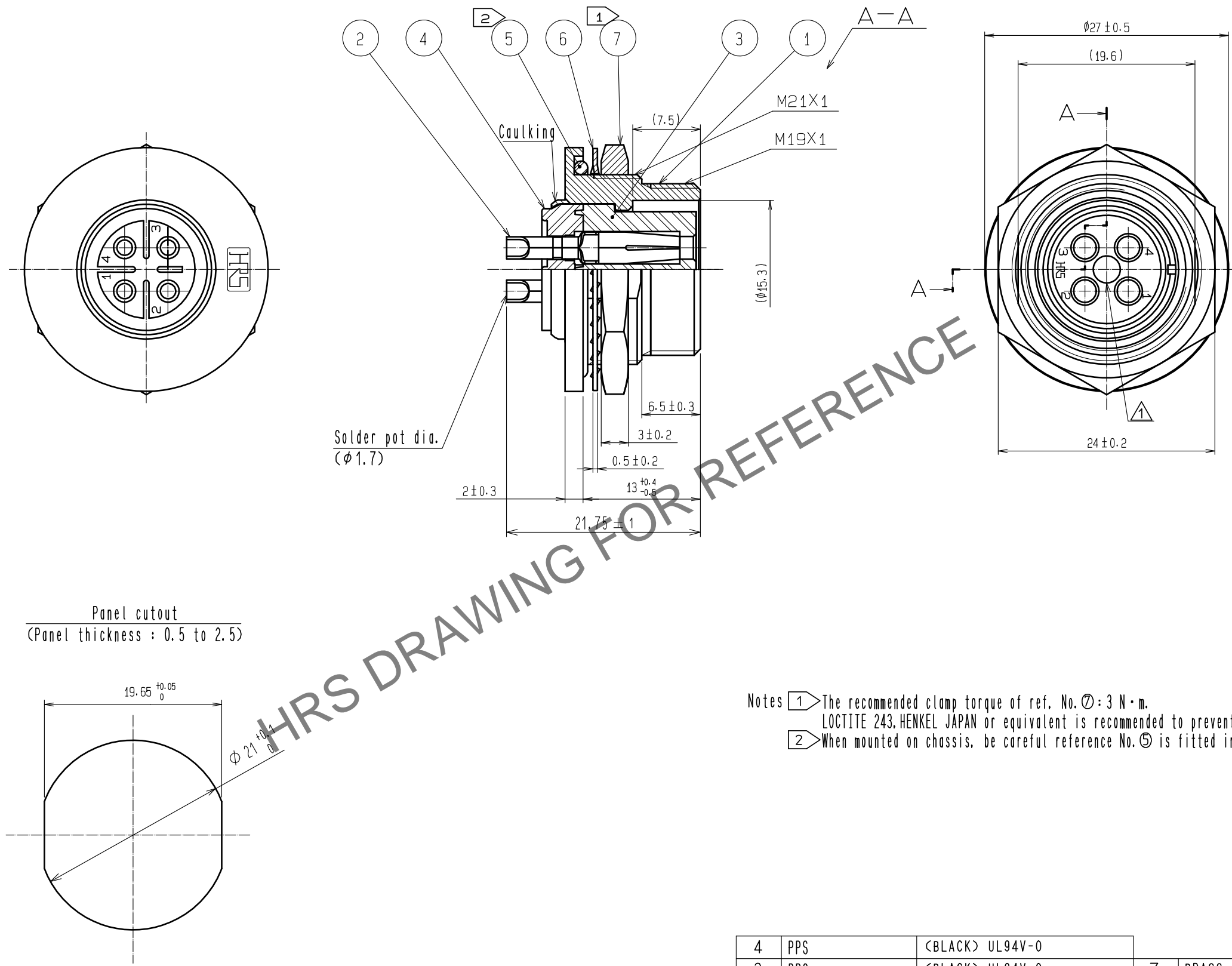


May.1.2024 Copyright 2024 HIROSE ELECTRIC CO., LTD. All Rights Reserved.
In case of consideration for using Automotive equipment / device which demand high reliability, kindly contact our sales window correspondents.



Notes ① The recommended clamp torque of ref. No. ⑦ : 3 N·m.
LOCTITE 243, HENKEL JAPAN or equivalent is recommended to prevent ref. No. ⑦ from loosening.
② When mounted on chassis, be careful reference No. ⑤ is fitted into The indicates groove any biting.

4	PPS	〈BLACK〉 UL94V-0			
3	PPS	〈BLACK〉 UL94V-0	7	BRASS	NICKEL PLATING
2	COPPER ALLOY	SILVER PLATING 2 μm min.	6	PHOSPHOR BRONZE	NICKEL PLATING
1	ZINC ALLOY	CHROME PLATING	5	SILICONE RUBBER	〈BLACK〉
NO.	MATERIAL	FINISH . REMARKS	NO.	MATERIAL	FINISH . REMARKS
UNITS mm		SCALE 2 : 1	COUNT 1	DESCRIPTION OF REVISIONS DIS-C-00000841	DESIGNED KN. IKEHARA
HIROSE ELECTRIC CO., LTD.		APPROVED : HY. KOBAYASHI	15.11.06	DRAWING NO.	EDC-111089-81-00
		CHECKED : HY. KOBAYASHI	15.11.06	PART NO.	RM15WTRZA-4S(81)
		DESIGNED : KN. IKEHARA	15.11.06	CODE NO.	CL109-1659-1-81
		DRAWN : KN. IKEHARA	15.11.06		