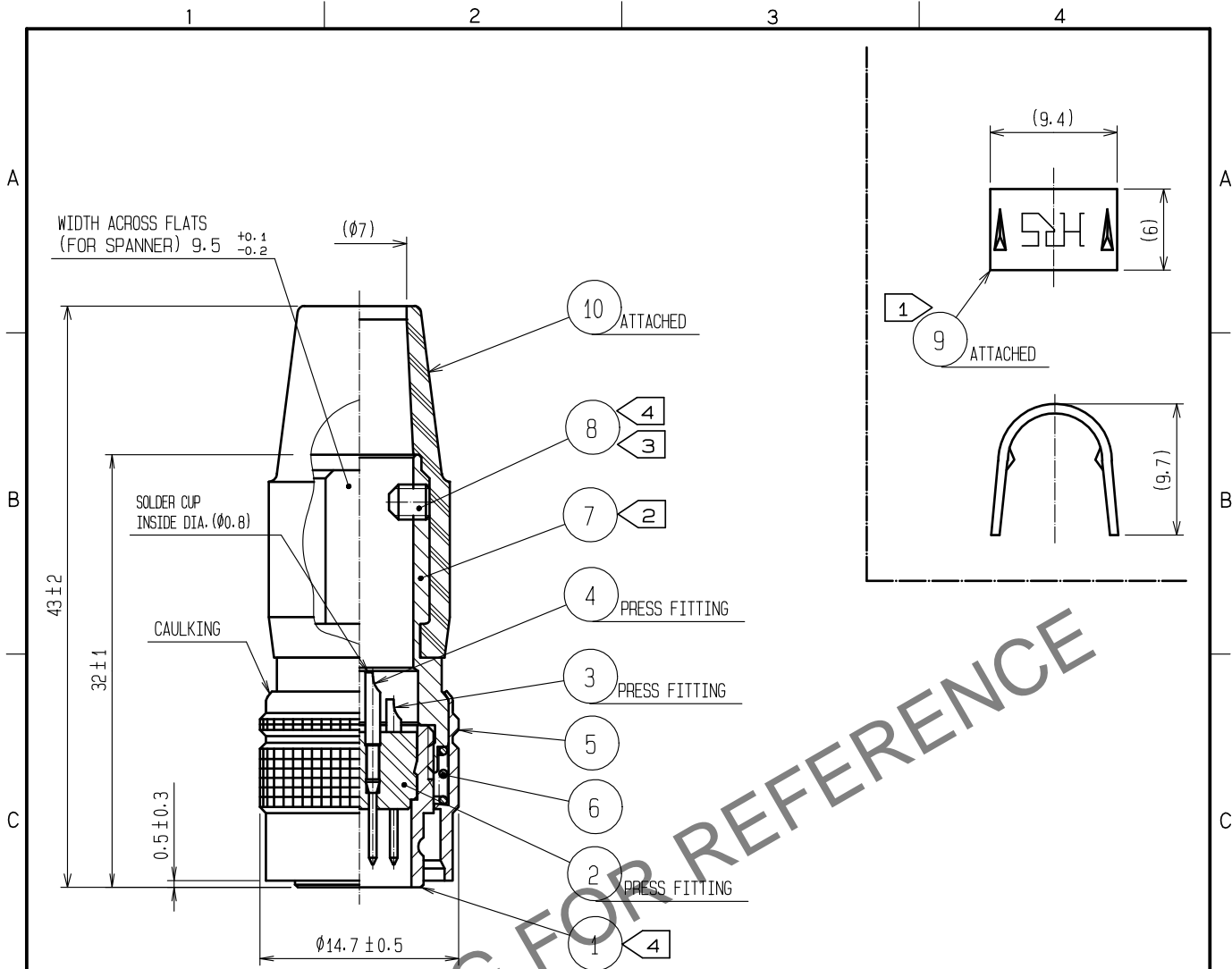
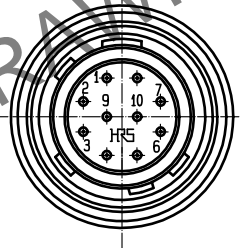


Sep. 1. 2024 Copyright 2024 HIROSE ELECTRIC CO., LTD. All Rights Reserved.
In case of consideration for using Automotive equipment / device which demand high reliability, kindly contact our sales window correspondents.



HRS DRAWING FOR REFERENCE

- NOTES
- ① HAND CRIMPING TOOL. REF. NO. ⑨: HR10A-TC-02(CL150-0041-2)
THE HOLE DIAMETER FOR CRIMPING : $\phi 7.0$
 - ② THE RECOMMENDED CLAMP TORQUE, REF. NO. ⑦: 2 TO 2.5 N·m.
 - ③ ACROSS FLATS HEXAGON HEAD OF REF. NO. ⑧: 1.27
THE RECOMMENDED CLAMP TORQUE, REF. NO. ⑧: 0.3 TO 0.4 N·m.
 - ④ LOCTITE 263, HENKEL JAPAN OR EQUIVALENT APPLIES
TO PREVENT REF. NO. ① AND ⑧ FROM LOOSENING.
 - ⑤ ONE EXAMPLE OF THE ROTATION OF REF. NO. ⑦ TO
REF. NO. ① IS SHOWN.
 - ⑥ THE ASSEMBLY THIS PRODUCT APPLIES TO
THE MANUAL ETAD-C0354-00.



NO.	MATERIAL	FINISH .	REMARKS	NO.	MATERIAL	FINISH .	REMARKS
5	BRASS		MATTE FINISH NICKEL PLATED	10	CR		(BLACK)
4	BRASS		SILVER PLATING 2#m min.	9	BRASS		
3	BRASS			8	STEEL	NICKEL PLATING	HEXAGON SOCKET SET SCREW M2.6X0.45X3
2	POLYAMIDE		(BLACK) UL94V-0	7	BRASS		NICKEL PLATING
1	ZINC ALLOY		MATTE FINISH NICKEL PLATED	6	STEEL		NICKEL PLATING

UNITS mm	SCALE	COUNT	DESCRIPTION OF REVISIONS	DESIGNED	CHECKED	DATE
	2 : 1	2	DIS-C-00016953	HT. ZENBA	EJ. KUNII	20240220

HIROSE ELECTRIC CO., LTD.	APPROVED : MO. SATOH	20051020	DRAWING NO.	EDC4-021366-73	
	CHECKED : EJ. KUNII	20051020	PART NO.	HR10A-10P-10P(73)	
	DESIGNED : DS. MATSUNE	20051019	CODE NO.	CL0110-0407-3-73	①/①
	DRAWN : DS. MATSUNE	20051019			