

May.1.2024 Copyright 2024 HIROSE ELECTRIC CO., LTD. All Rights Reserved.
In case of consideration for using Automotive equipment / device which demand high reliability, kindly contact our sales window correspondents.

Fig.2(1:1)

A-A

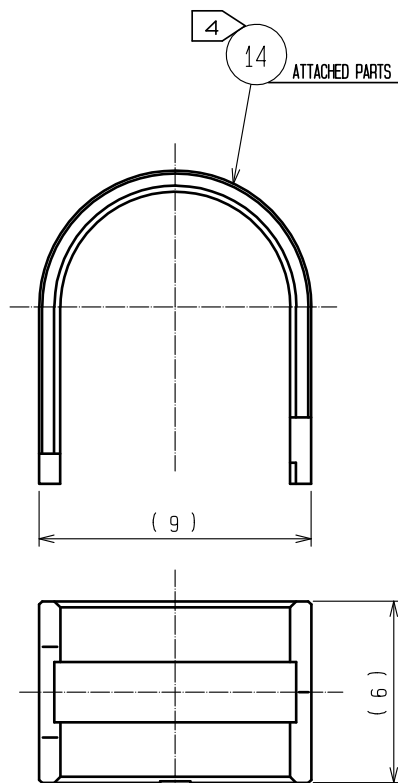
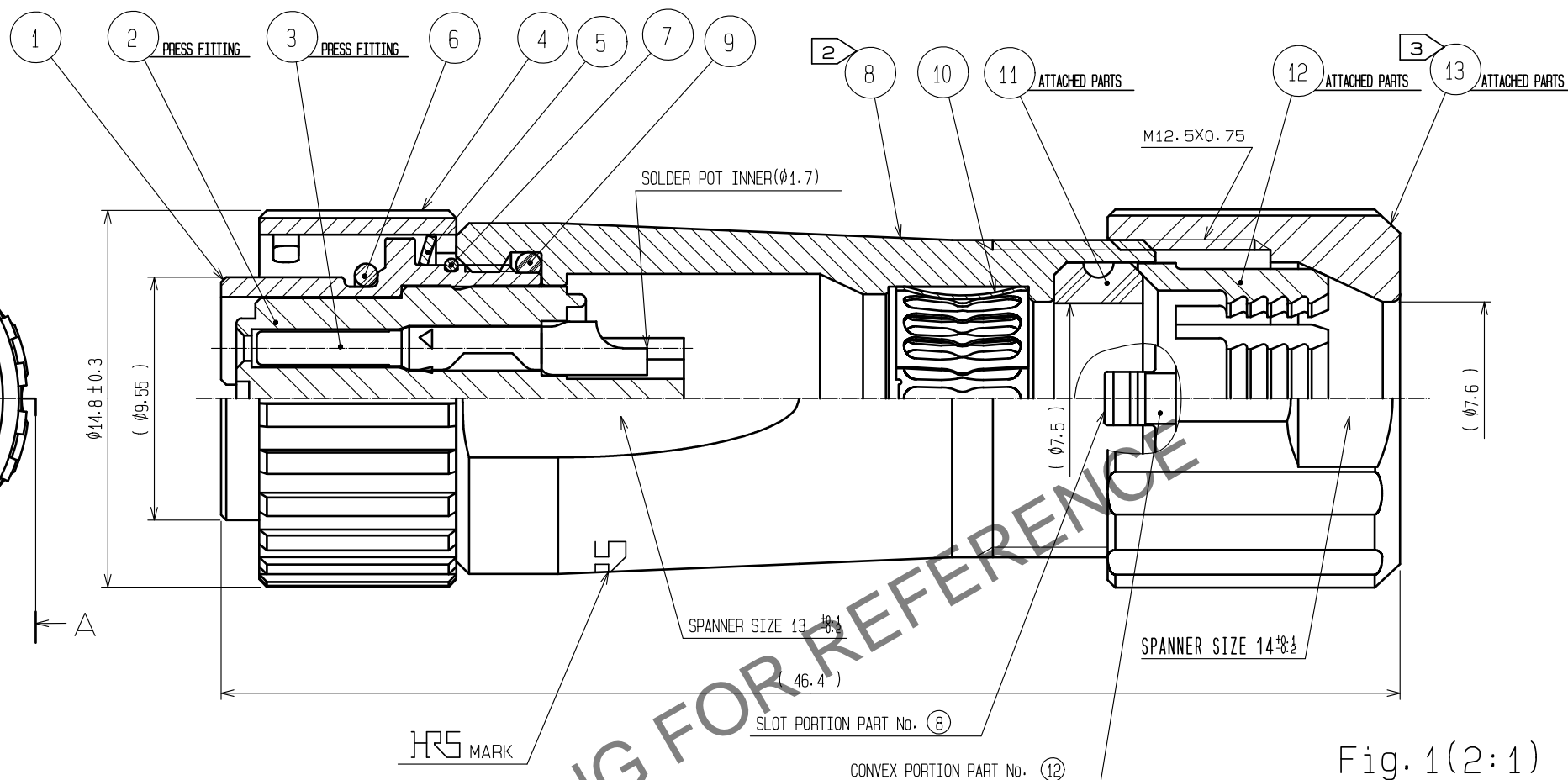
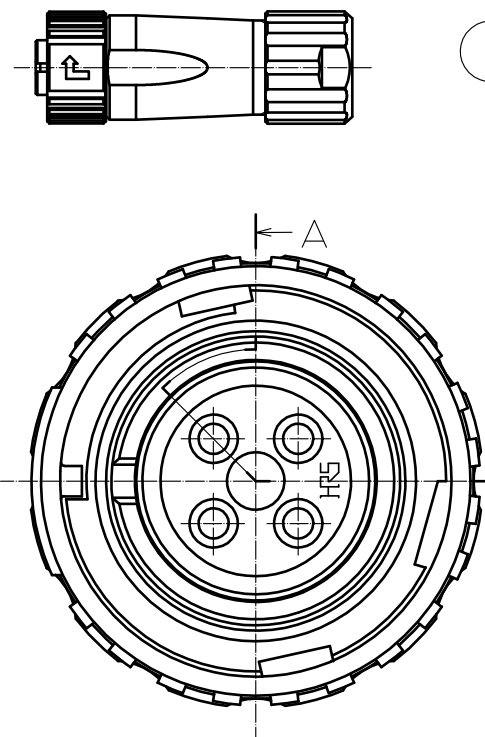
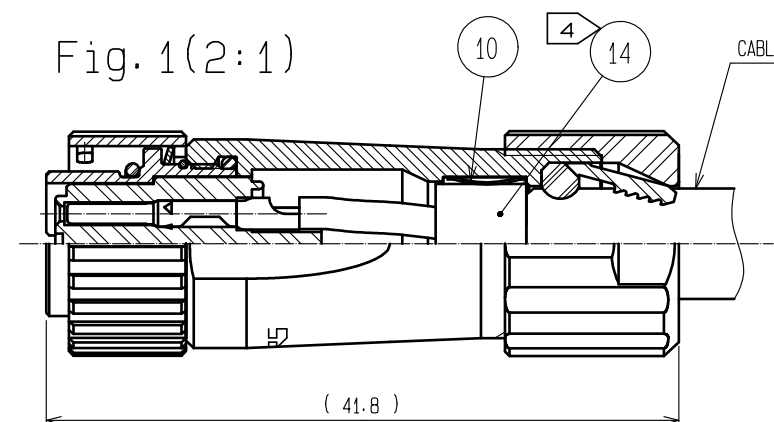


Fig.1(2:1)



- NOTES
- PLATING(REF.NO.③)
CONTACT AREA : GOLD 0.2μm min
OTHERS : GOLD OR NICKEL
UNDER PLATING : NICKEL 2μm min
 - THE RECOMMENDED CLAMP TORQUE OF REF.NO.⑧ TO BE 1 TO 1.5N·m.
THREAD LOCKER TO THE THREADED PORTION OF REF.NO.① APPLIES TO PREVENT REF.NO.⑧ FROM LOOSING.
RECOMMENDED THREAD LOCKER : LOCTITE 263, HENKEL JAPAN LTD.
 - THE RECOMMENDED CLAMP TORQUE OF REF.NO.⑬ TO BE 0.8 TO 1N·m.
THREAD LOCKER AND LOCK PRIMER TO THE THREADED PORTION M12.5X0.75 OF REF.NO.⑧ APPLIES TO PREVENT REF.NO.⑬ FROM LOOSING.
RECOMMENDED THREAD LOCKER AND LOCK PRIMER : LOCTITE 263, LOCK PRIMER 7649, HENKEL JAPAN LTD.
 - FASTEN REF.NO.⑭ TO THE CABLE WITH THE CABLE CRIMPING TOOL.
AND MAKE REF.NO.⑭ CONTACT WITH REF.NO.⑩ (REFER TO Fig.1).
REFER TO THE TECHNICAL SPECIFICATION ETAD-C0099 FOR DETAILS.
APPLICABLE CABLE CRIMPING TOOL : LF-TC-01 (CL150-0234-6)
 - APPLICABLE CABLE ASSEMBLY FIXTURE : LF10BP-T01 (CL150-0235-9)
CABLE ASSEMBLY FIXTURE IS USED AS A RECEPTACLE STAND OF EXTRACT AND THE PART NUMBER ① OF AN ASSEMBLY.
 - Fig.2 SHOWS THE APPEARANCE AFTER ASSEMBLY.
 - ROTATION EXAMPLES OF REF.④, ⑧ AND ⑬ TO ① ARE SHOWN.
 - CABLE PULL FORCE, TWISTING STRENGTH, WATER TIGHTNESS AND OTHER CHARACTERISTICS MAY DIFFER DEPENDING ON CABLE SPECIFICATIONS AND STRUCTURE.
PLEASE EVALUATE UNDER THE ACTUAL CONDITIONS PRIOR TO USE.
 - THIS PRODUCT MAY BE STAINED DUE TO LUBRICANT.
HOWEVER, THIS DOES NOT AFFECT THE PRODUCT PERFORMANCE, SO PLEASE USE IT AS IT IS.

7	STAINLESS STEEL		14	BRASS	NICKEL PLATING
6	SILICONE RUBBER	(BLACK)	13	PPS	(NATURAL·BROWN) UL94V-0
5	STAINLESS STEEL		12	POLYAMIDE	(NATURAL·MILKY WHITE) UL94V-0
4	ZINC ALLOY	BLACK CHROME PLATING	11	SILICONE RUBBER	(BLACK)
3	COPPER ALLOY	①	10	PHOSPHOR BRONZE	NICKEL PLATING
2	PPS	(BLACK) UL94V-0	9	SILICONE RUBBER	(BLACK)
1	ZINC ALLOY	BLACK CHROME PLATING	8	ZINC ALLOY	BLACK CHROME PLATING
NO.	MATERIAL	FINISH, REMARKS	NO.	MATERIAL	FINISH, REMARKS
UNITS mm			SCALE 4 : 1		
COUNT 3			DESCRIPTION OF REVISIONS DIS-C-00017016		
DESIGNED HT. ZENBA			CHECKED EJ. KUNII		
DATE 20240311			DRAWING NO. EDC3-114240-03		
APPROVED : MO. SATOH 20090114			PART NO. LF10WBP-4S(03)		
CHECKED : HY. KOBAYASHI 20090114			CODE NO. CL0136-0005-2-03		
DESIGNED : TY. SUZUKI 20090113			DRAWN : TY. SUZUKI 20090113		