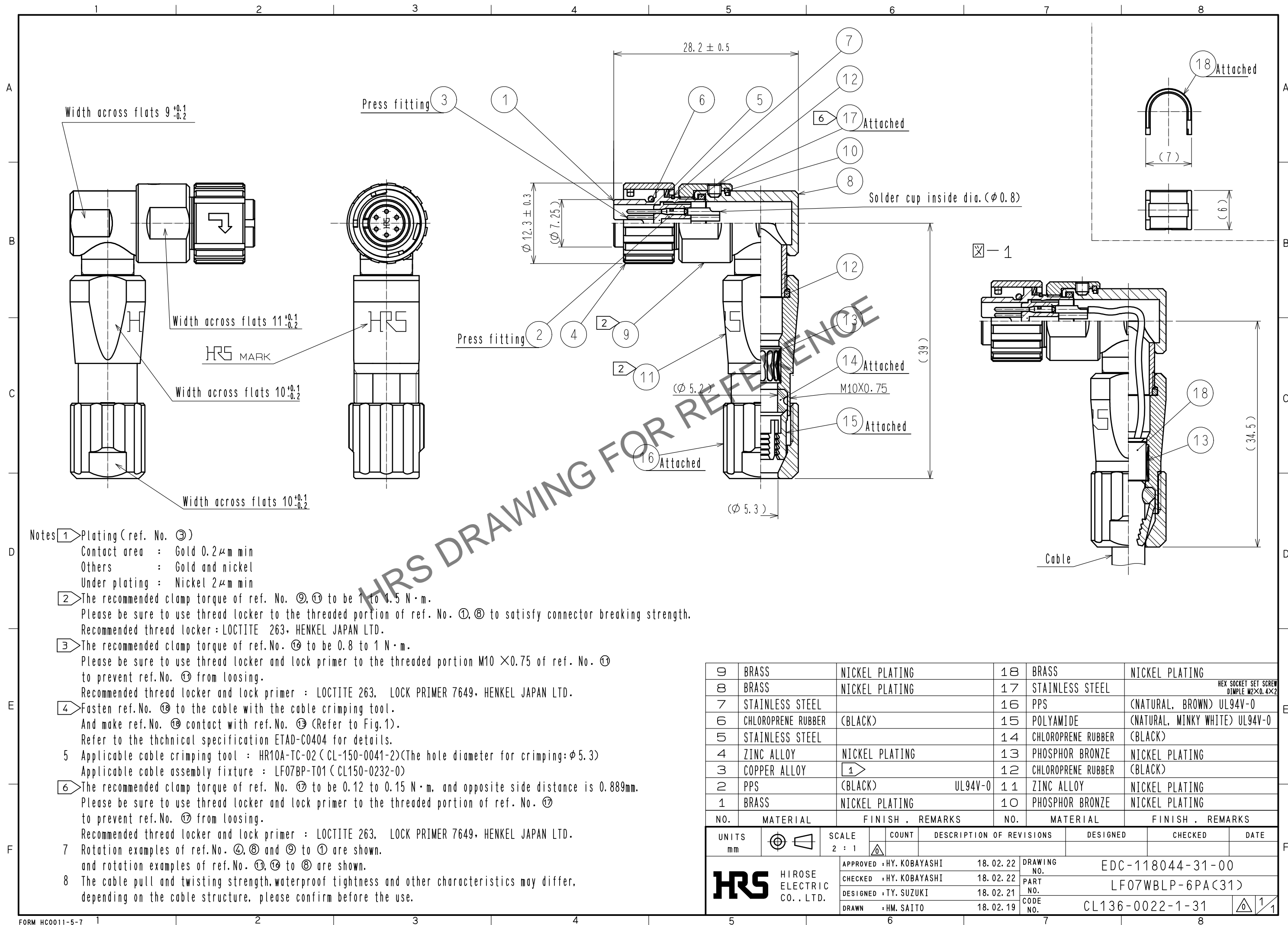


Apr.1.2024 Copyright 2024 HIROSE ELECTRIC CO., LTD. All Rights Reserved.  
In case of consideration for using Automotive equipment / device which demand high reliability, kindly contact our sales window correspondents.



- Notes ① Plating (ref. No. ③)
- Contact area : Gold 0.2  $\mu$ m min
- Others : Gold and nickel
- Under plating : Nickel 2  $\mu$ m min
- ② The recommended clamp torque of ref. No. ⑨, ⑩ to be 1 to 1.5 N·m.
- Please be sure to use thread locker to the threaded portion of ref. No. ①, ⑧ to satisfy connector breaking strength.
- Recommended thread locker : LOCTITE 263, HENKEL JAPAN LTD.
- ③ The recommended clamp torque of ref. No. ⑬ to be 0.8 to 1 N·m.
- Please be sure to use thread locker and lock primer to the threaded portion M10 × 0.75 of ref. No. ⑩
- to prevent ref. No. ⑩ from loosening.
- Recommended thread locker and lock primer : LOCTITE 263, LOCK PRIMER 7649, HENKEL JAPAN LTD.
- ④ Fasten ref. No. ⑱ to the cable with the cable crimping tool.
- And make ref. No. ⑱ contact with ref. No. ⑬ (Refer to Fig. 1).
- Refer to the thchnical specification ETAD-C0404 for details.
- 5 Applicable cable crimping tool : HR10A-TC-02 (CL-150-0041-2) (The hole diameter for crimping:  $\phi 5.3$ )
- Applicable cable assembly fixture : LF07BP-T01 (CL150-0232-0)
- ⑥ The recommended clamp torque of ref. No. ⑰ to be 0.12 to 0.15 N·m, and opposite side distance is 0.889mm.
- Please be sure to use thread locker and lock primer to the threaded portion of ref. No. ⑰
- to prevent ref. No. ⑰ from loosening.
- Recommended thread locker and lock primer : LOCTITE 263, LOCK PRIMER 7649, HENKEL JAPAN LTD.
- 7 Rotation examples of ref. No. ④, ⑧ and ⑨ to ① are shown.
- and rotation examples of ref. No. ⑩, ⑬ to ⑧ are shown.
- 8 The cable pull and twisting strength, waterproof tightness and other characteristics may differ,
- depending on the cable structure, please confirm before the use.

9	BRASS	NICKEL PLATING	18	BRASS	NICKEL PLATING
8	BRASS	NICKEL PLATING	17	STAINLESS STEEL	HEX SOCKET SET SCREW DIMPLE M2×0.4×2
7	STAINLESS STEEL		16	PPS	(NATURAL, BROWN) UL94V-0
6	CHLOROPRENE RUBBER	(BLACK)	15	POLYAMIDE	(NATURAL, MINKY WHITE) UL94V-0
5	STAINLESS STEEL		14	CHLOROPRENE RUBBER	(BLACK)
4	ZINC ALLOY	NICKEL PLATING	13	PHOSPHOR BRONZE	NICKEL PLATING
3	COPPER ALLOY	①	12	CHLOROPRENE RUBBER	(BLACK)
2	PPS	(BLACK) UL94V-0	11	ZINC ALLOY	NICKEL PLATING
1	BRASS	NICKEL PLATING	10	PHOSPHOR BRONZE	NICKEL PLATING
NO.	MATERIAL	FINISH, REMARKS	NO.	MATERIAL	FINISH, REMARKS
UNITS mm					
SCALE 2 : 1					
COUNT					
DESCRIPTION OF REVISIONS					
DESIGNED					
CHECKED					
DATE					
APPROVED : HY. KOBAYASHI 18.02.22					
CHECKED : HY. KOBAYASHI 18.02.22					
DESIGNED : TY. SUZUKI 18.02.21					
DRAWN : HM. SAITO 18.02.19					
DRAWING NO. EDC-118044-31-00					
PART NO. LF07WBLP-6PA(31)					
CODE NO. CL136-0022-1-31					
1/1					