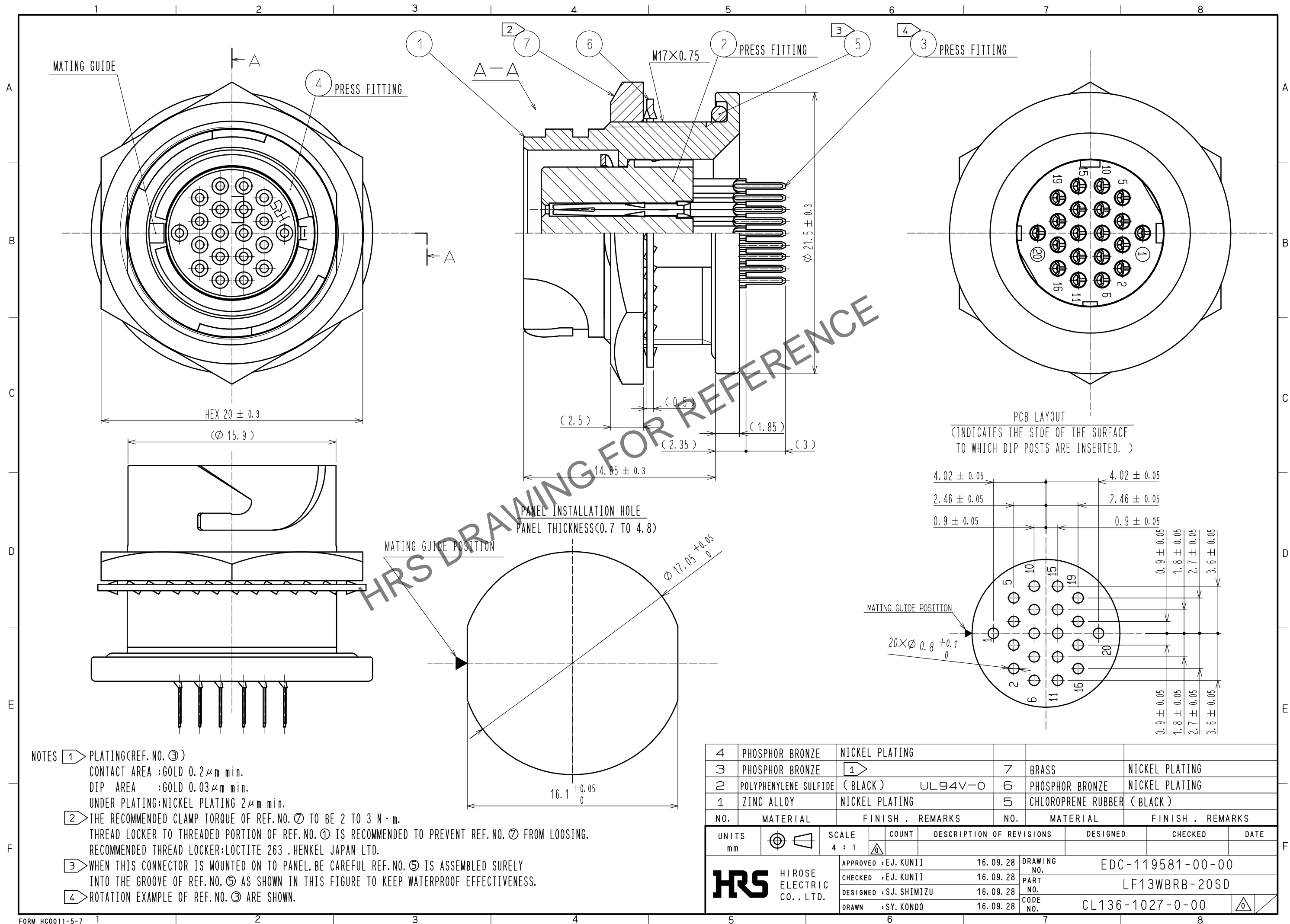
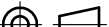
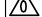



May.1.2024 Copyright 2024 HIROSE ELECTRIC CO., LTD. All Rights Reserved.
In case of consideration for using Automotive equipment / device which demand high reliability, kindly contact our sales window correspondents.



- NOTES
- 1 PLATING(REF. NO. ③)
CONTACT AREA :GOLD 0.2 μ m min.
DIP AREA :GOLD 0.03 μ m min.
UNDER PLATING:NICKEL PLATING 2 μ m min.
 - 2 THE RECOMMENDED CLAMP TORQUE OF REF. NO. ⑦ TO BE 2 TO 3 N·m.
THREAD LOCKER TO THREADED PORTION OF REF. NO. ① IS RECOMMENDED TO PREVENT REF. NO. ⑦ FROM LOOSING.
RECOMMENDED THREAD LOCKER:LOCTITE 263 , HENKEL JAPAN LTD.
 - 3 WHEN THIS CONNECTOR IS MOUNTED ON TO PANEL,BE CAREFUL REF. NO. ⑤ IS ASSEMBLED SURELY INTO THE GROOVE OF REF. NO. ⑤ AS SHOWN IN THIS FIGURE TO KEEP WATERPROOF EFFECTIVENESS.
 - 4 ROTATION EXAMPLE OF REF. NO. ③ ARE SHOWN.

4	PHOSPHOR BRONZE	NICKEL PLATING							
3	PHOSPHOR BRONZE	1		7	BRASS	NICKEL PLATING			
2	POLYPHENYLENE SULFIDE	(BLACK) UL94V-0		6	PHOSPHOR BRONZE	NICKEL PLATING			
1	ZINC ALLOY	NICKEL PLATING		5	CHLOROPRENE RUBBER	(BLACK)			
NO.	MATERIAL	FINISH , REMARKS		NO.	MATERIAL	FINISH , REMARKS			
UNITS mm				SCALE 4 : 1	COUNT	DESCRIPTION OF REVISIONS	DESIGNED	CHECKED	DATE
									
 HIROSE ELECTRIC CO., LTD.		APPROVED :EJ. KUNII		16.09.28	DRAWING NO. EDC-119581-00-00				
		CHECKED :EJ. KUNII		16.09.28	PART NO. LF13WBRB-20SD				
		DESIGNED :SJ. SHIMIZU		16.09.28	CODE NO. CL136-1027-0-00				
		DRAWN :SY. KONDO		16.09.28					
								