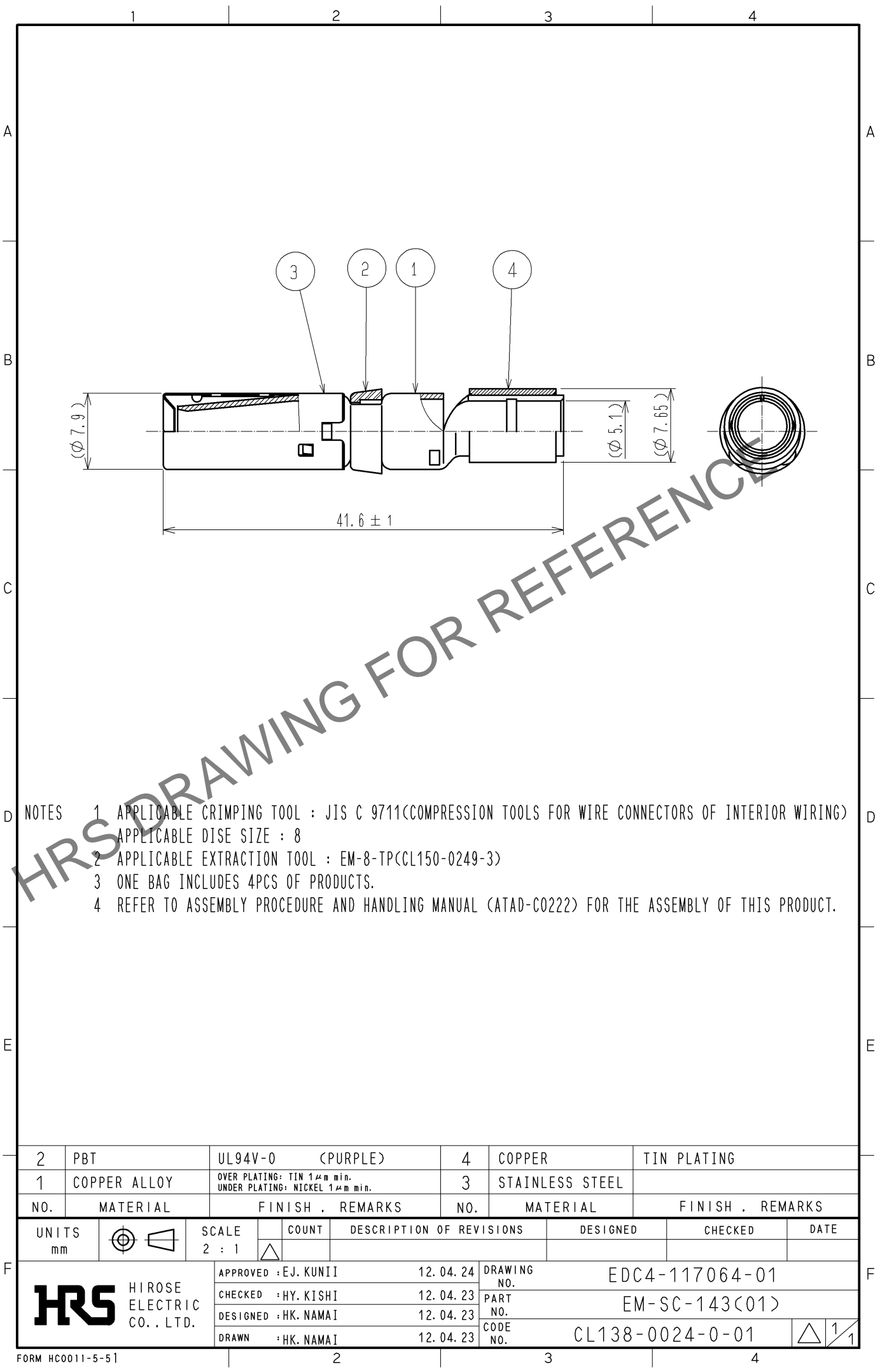
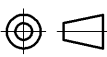
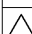




May.1.2024 Copyright 2024 HIROSE ELECTRIC CO., LTD. All Rights Reserved.  
In case of consideration for using Automotive equipment / device which demand high reliability, kindly contact our sales window correspondents.



- NOTES
- 1 APPLICABLE CRIMPING TOOL : JIS C 9711<COMPRESSION TOOLS FOR WIRE CONNECTORS OF INTERIOR WIRING>  
APPLICABLE DISE SIZE : 8
  - 2 APPLICABLE EXTRACTION TOOL : EM-8-TP<CL150-0249-3>
  - 3 ONE BAG INCLUDES 4PCS OF PRODUCTS.
  - 4 REFER TO ASSEMBLY PROCEDURE AND HANDLING MANUAL (ATAD-C0222) FOR THE ASSEMBLY OF THIS PRODUCT.

2	PBT	UL94V-0 (PURPLE)	4	COPPER	TIN PLATING			
1	COPPER ALLOY	OVER PLATING: TIN 1μm min. UNDER PLATING: NICKEL 1μm min.	3	STAINLESS STEEL				
NO.	MATERIAL	FINISH . REMARKS	NO.	MATERIAL	FINISH . REMARKS			
UNITS mm		SCALE 2 : 1		COUNT	DESCRIPTION OF REVISIONS	DESIGNED	CHECKED	DATE
 HIROSE ELECTRIC CO., LTD.		APPROVED : EJ. KUNII		12. 04. 24	DRAWING NO.	EDC4-117064-01		
		CHECKED : HY. KISHI		12. 04. 23	PART NO.	EM-SC-143<01>		
		DESIGNED : HK. NAMAI		12. 04. 23	CODE NO.	CL138-0024-0-01		
		DRAWN : HK. NAMAI		12. 04. 23	 1 / 1			
FORM HC0011-5-51		2		3		4		