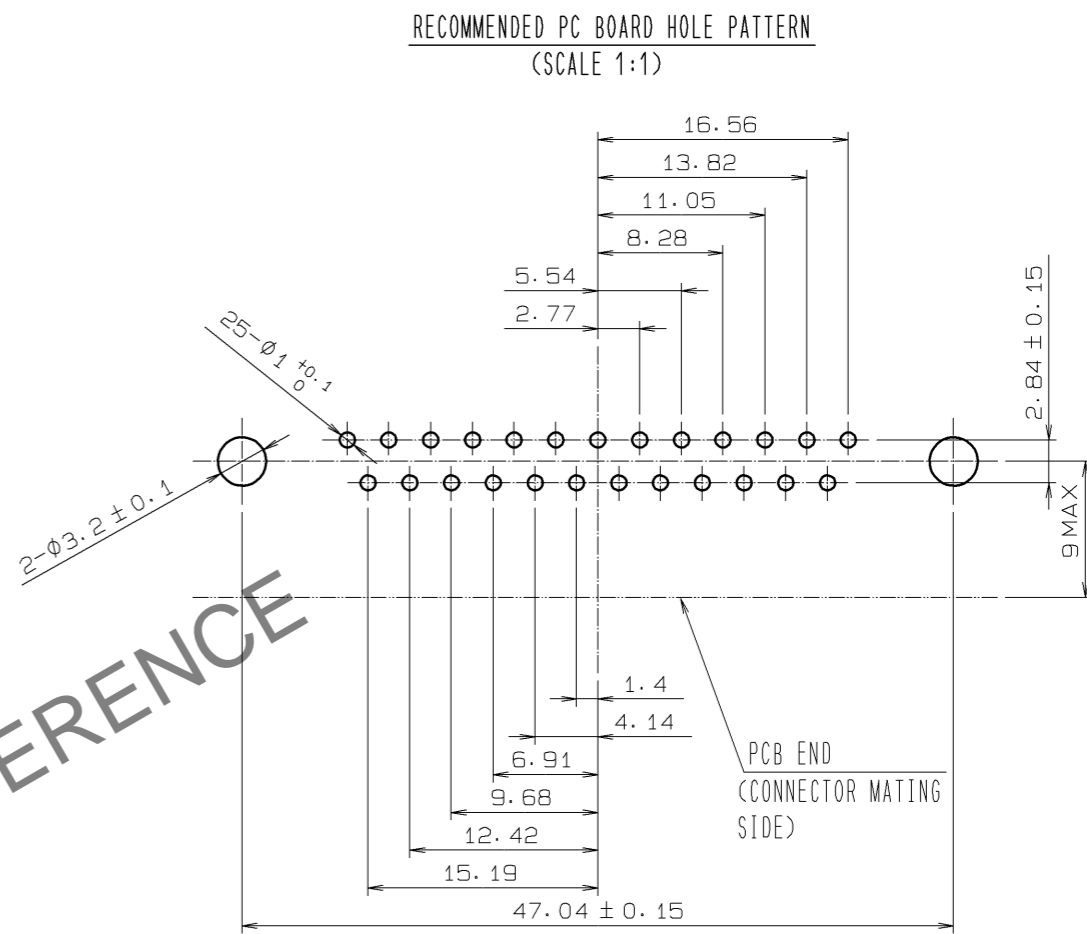
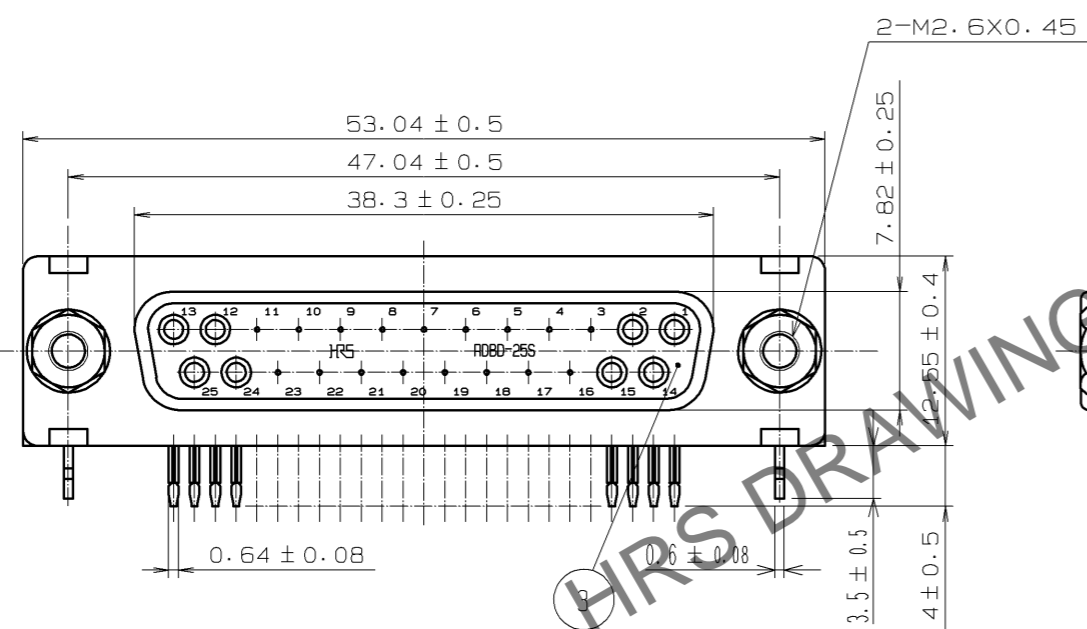
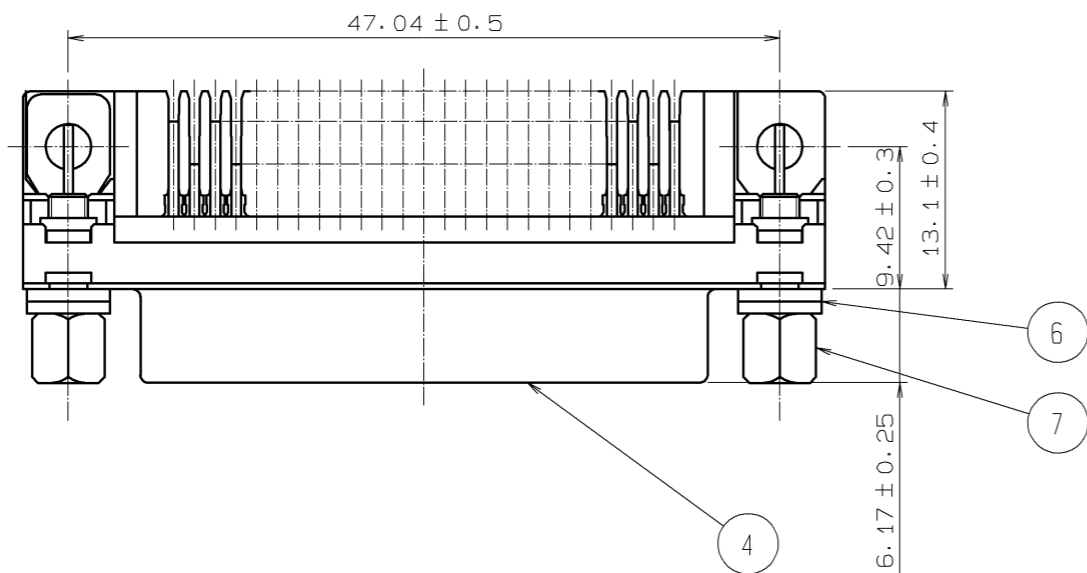
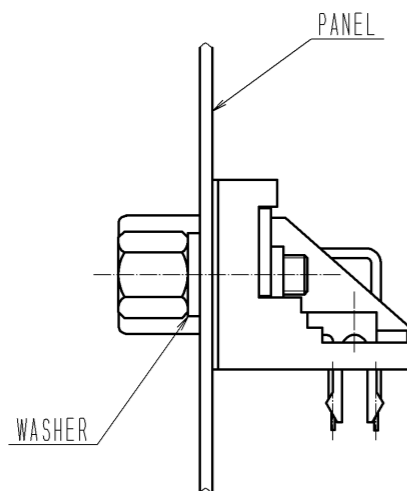


Mar.1.2026 Copyright 2026 HIROSE ELECTRIC CO., LTD. All Rights Reserved.
In case of consideration for using Automotive equipment / device which demand high reliability, kindly contact our sales window correspondents.



PATTERN OF MOUNTING CONNECTOR ON PCB



REMOVE ONE WASHER FOR 0.8 TO 1.2 OF PANEL THICKNESS.
REMOVE TWO WASHERS FOR 1.6 OF PANEL THICKNESS.

NOTE. 1. PLEASE KEEP THE TOLERANCE TO LESS THAN ± 0.1 FOR THE DIMENSIONS WITHOUT TOLERANCE.
2. PLEASE USE THICKNESS 1.6 OF PC BOARD.

4	STEEL	NICKEL PLATING	7	STEEL	NICKEL PLATING
3	PBT	BLACK UL94V-0			FLAT WASHER SPRING WASHER PAN HEAD MACHINE SCREW M2.6X0.45X8
2	PHOSPHOR BRONZE	SELECTIVE GOLD PLATING 0.2 μ m	6	STEEL	NICKEL PLATING
1	PHOSPHOR BRONZE	SELECTIVE GOLD PLATING 0.2 μ m	5	PHOSPHOR BRONZE	TIN PLATING
NO.	MATERIAL	FINISH . REMARKS	NO.	MATERIAL	FINISH . REMARKS

UNITS mm		SCALE 2 : 1	COUNT Δ	DESCRIPTION OF REVISIONS	DESIGNED	CHECKED	DATE
APPROVED : NM. NISHIMATSU 14.06.24				DRAWING NO.	EDC3-020746-01		
CHECKED : NM. NISHIMATSU 14.06.24				PART NO.	RDBD-25SE-LNA(55)		
DESIGNED : WR. YAMADA 14.06.24				CODE NO.	CL211-0333-3-55		
DRAWN : WR. YAMADA 14.06.24				Δ 1/1			