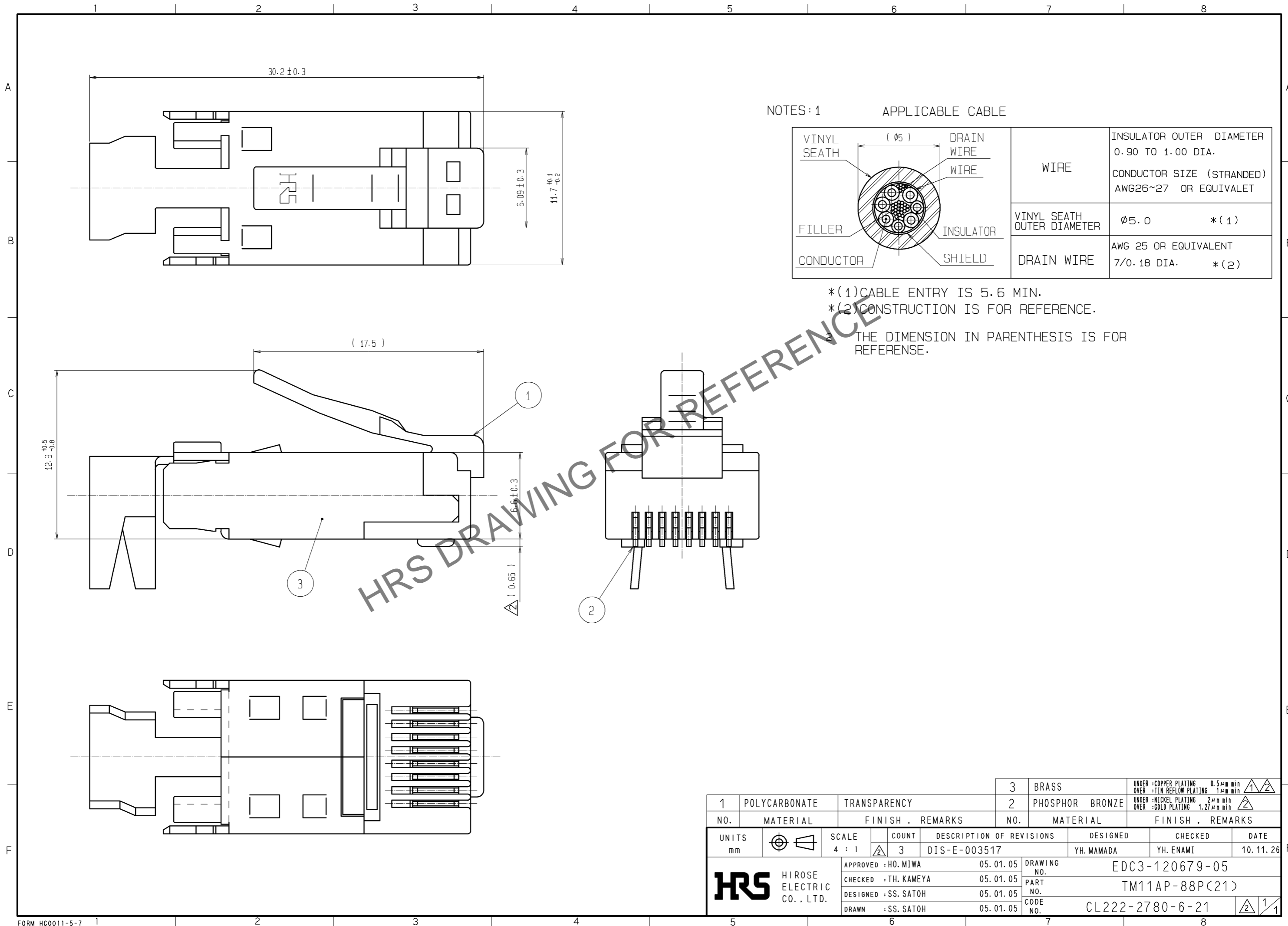


May.1.2024 Copyright 2024 HIROSE ELECTRIC CO., LTD. All Rights Reserved.
In case of consideration for using Automotive equipment / device which demand high reliability, kindly contact our sales window correspondents.



NOTES: 1 APPLICABLE CABLE

VINYL SEATH	($\phi 5$)	DRAIN WIRE	WIRE	INSULATOR OUTER DIAMETER	0.90 TO 1.00 DIA.
FILLER		WIRE		CONDUCTOR SIZE (STRANDED)	AWG26~27 OR EQUIVALET
CONDUCTOR		INSULATOR	VINYL SEATH OUTER DIAMETER	$\phi 5.0$	*(1)
		SHIELD	DRAIN WIRE	AWG 25 OR EQUIVALENT	7/0.18 DIA. *(2)

*(1) CABLE ENTRY IS 5.6 MIN.
*(2) CONSTRUCTION IS FOR REFERENCE.
THE DIMENSION IN PARENTHESIS IS FOR REFERENCE.

HRS DRAWING FOR REFERENCE

1	POLYCARBONATE	TRANSPARENCY	3	BRASS	UNDER : COPPER PLATING 0.5 μ m min OVER : TIN REFLOW PLATING 1 μ m min	Δ Δ
2	PHOSPHOR BRONZE				UNDER : NICKEL PLATING 2 μ m min OVER : GOLD PLATING 1.27 μ m min	Δ
NO.	MATERIAL	FINISH . REMARKS	NO.	MATERIAL	FINISH . REMARKS	
UNITS	\odot \square	SCALE	COUNT	DESCRIPTION OF REVISIONS		DESIGNED
mm		4 : 1	Δ 3	DIS-E-003517		YH. MAMADA
APPROVED : HO. MIWA		05.01.05		DRAWING NO.		EDC3-120679-05
CHECKED : TH. KAMEYA		05.01.05		PART NO.		TM11AP-88P(21)
DESIGNED : SS. SATOH		05.01.05		CODE NO.		CL222-2780-6-21
DRAWN : SS. SATOH		05.01.05				Δ Δ 1/1
				DATE	YH. ENAMI	10.11.26