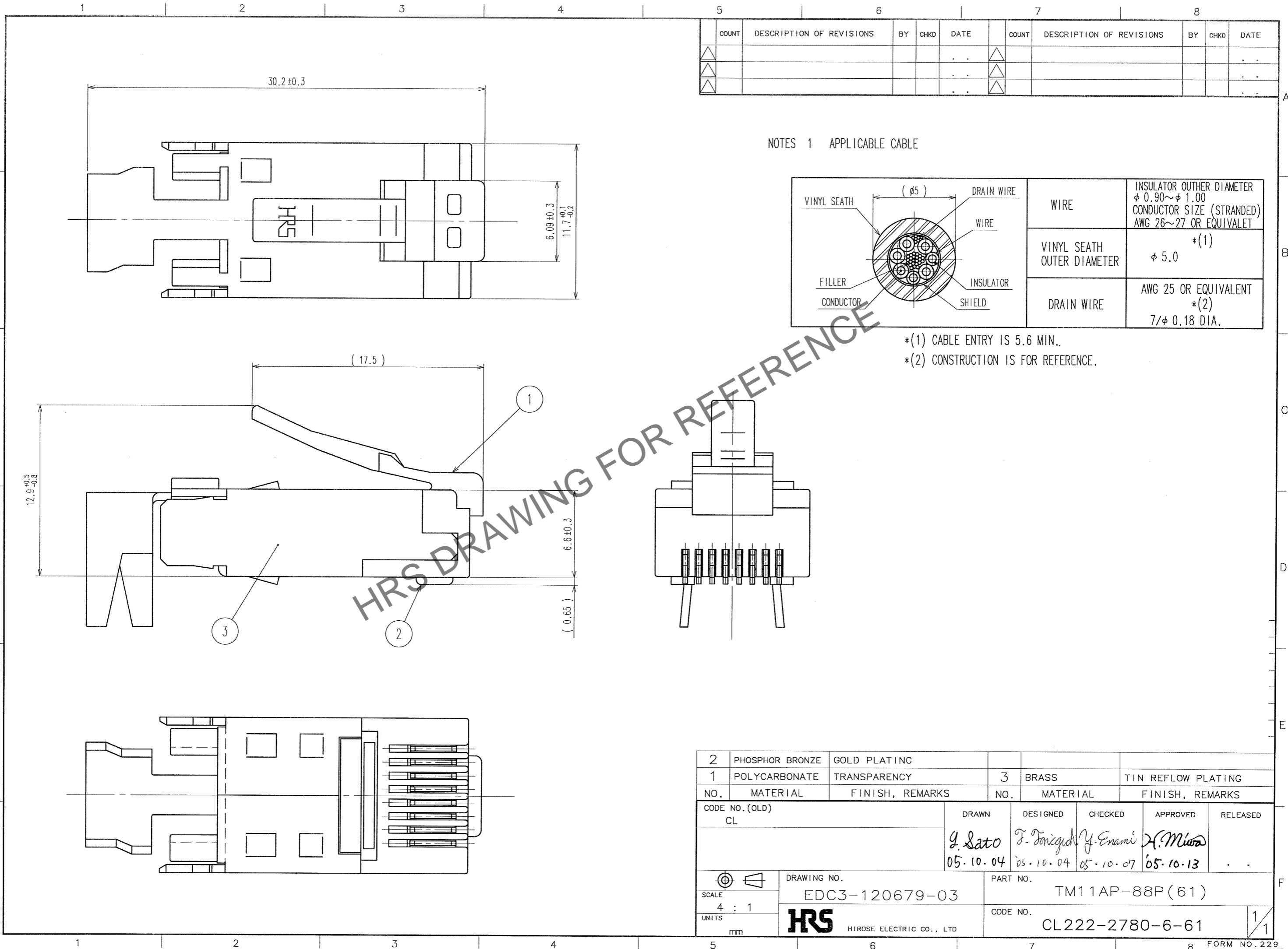


May.1.2024 Copyright 2024 HIROSE ELECTRIC CO., LTD. All Rights Reserved.  
 In case of consideration for using Automotive equipment / device which demand high reliability, kindly contact our sales window correspondents.



COUNT	DESCRIPTION OF REVISIONS	BY	CHKD	DATE	COUNT	DESCRIPTION OF REVISIONS	BY	CHKD	DATE
△				..	△				..
△				..	△				..
△				..	△				..

NOTES 1 APPLICABLE CABLE

VINYL SEATH	(φ5)	DRAIN WIRE	WIRE	INSULATOR OUTER DIAMETER φ 0.90~φ 1.00 CONDUCTOR SIZE (STRANDED) AWG 26~27 OR EQUIVALENT
FILLER		WIRE	INSULATOR	* (1)
CONDUCTOR		SHIELD		φ 5.0
				AWG 25 OR EQUIVALENT * (2)
				7/φ 0.18 DIA.

\* (1) CABLE ENTRY IS 5.6 MIN.  
 \* (2) CONSTRUCTION IS FOR REFERENCE.

HRS DRAWING FOR REFERENCE

2	PHOSPHOR BRONZE	GOLD PLATING			
1	POLYCARBONATE	TRANSPARENCY	3	BRASS	TIN REFLOW PLATING
NO.	MATERIAL	FINISH, REMARKS	NO.	MATERIAL	FINISH, REMARKS
CODE NO. (OLD) CL		DRAWN	DESIGNED	CHECKED	APPROVED
		<i>G. Sato</i> 05.10.04	<i>T. Taniguchi</i> 05.10.04	<i>Y. Enami</i> 05.10.07	<i>H. Miura</i> 05.10.13
DRAWING NO. EDC3-120679-03		PART NO. TM11AP-88P(61)			
SCALE 4 : 1		CODE NO. CL222-2780-6-61		1 / 1	
UNITS mm		HRS HIROSE ELECTRIC CO., LTD			

TO
Q1