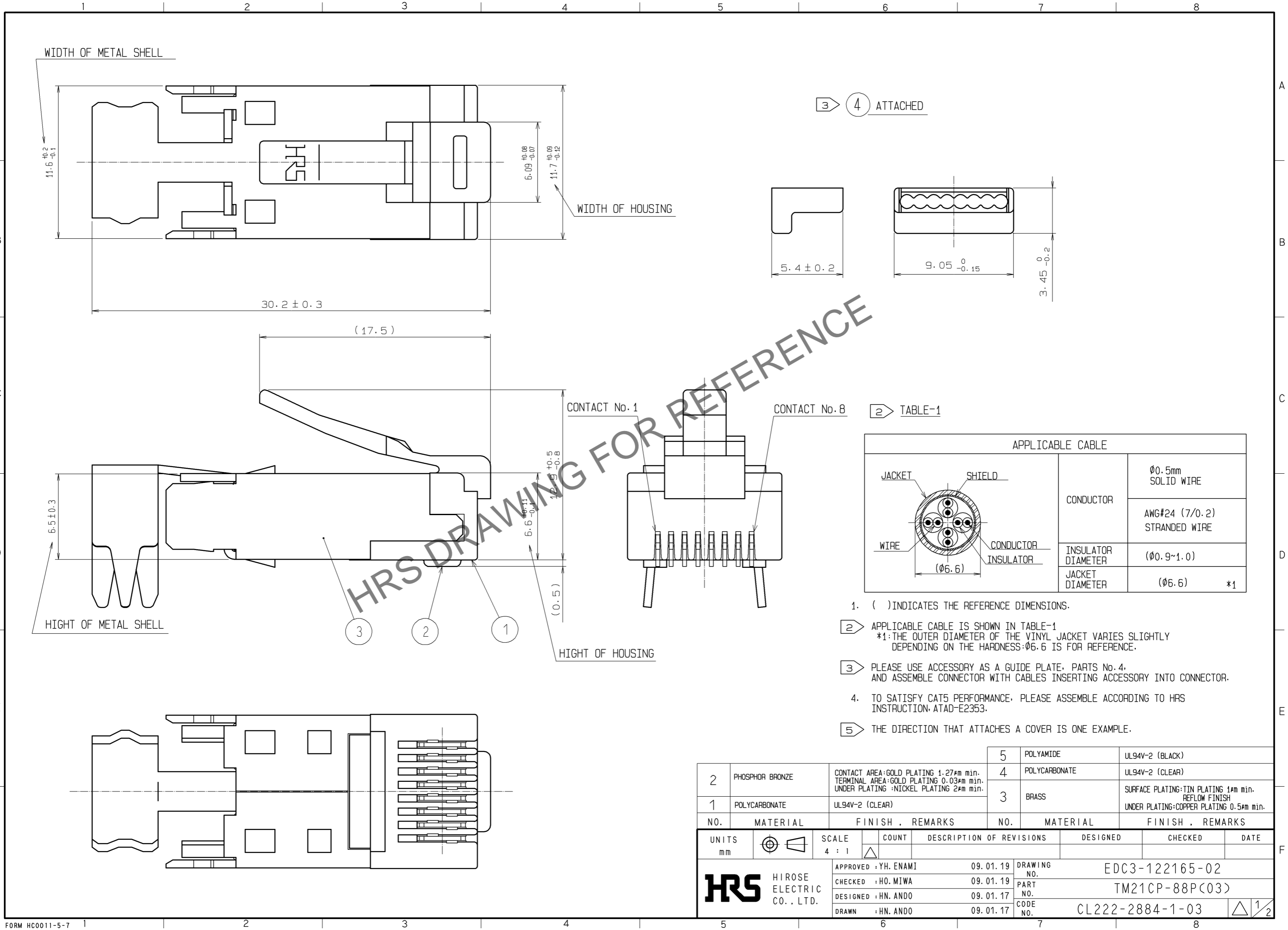


Dec.1.2024 Copyright 2024 HIROSE ELECTRIC CO., LTD. All Rights Reserved.  
 In case of consideration for using Automotive equipment / device which demand high reliability, kindly contact our sales window correspondents.



③ ④ ATTACHED

② TABLE-1

APPLICABLE CABLE		
CONDUCTOR	JACKET	Ø0.5mm SOLID WIRE
	SHIELD	AWG#24 (7/0.2) STRANDED WIRE
INSULATOR DIAMETER	WIRES	(Ø0.9~1.0)
JACKET DIAMETER	CONDUCTOR INSULATOR	(Ø6.6) *1

1. ( ) INDICATES THE REFERENCE DIMENSIONS.
- ② APPLICABLE CABLE IS SHOWN IN TABLE-1  
\*1: THE OUTER DIAMETER OF THE VINYL JACKET VARIES SLIGHTLY DEPENDING ON THE HARDNESS: Ø6.6 IS FOR REFERENCE.
- ③ PLEASE USE ACCESSORY AS A GUIDE PLATE, PARTS No. 4, AND ASSEMBLE CONNECTOR WITH CABLES INSERTING ACCESSORY INTO CONNECTOR.
4. TO SATISFY CAT5 PERFORMANCE, PLEASE ASSEMBLE ACCORDING TO HRS INSTRUCTION: ATAD-E2353.
- ⑤ THE DIRECTION THAT ATTACHES A COVER IS ONE EXAMPLE.

NO.	MATERIAL	FINISH . REMARKS	NO.	MATERIAL	FINISH . REMARKS
2	PHOSPHOR BRONZE	CONTACT AREA: GOLD PLATING 1.27µm min. TERMINAL AREA: GOLD PLATING 0.03µm min. UNDER PLATING : NICKEL PLATING 2µm min.	5	POLYAMIDE	UL94V-2 (BLACK)
1	POLYCARBONATE	UL94V-2 (CLEAR)	4	POLYCARBONATE	UL94V-2 (CLEAR)
			3	BRASS	SURFACE PLATING: TIN PLATING 1µm min. REFLOW FINISH UNDER PLATING: COPPER PLATING 0.5µm min.

UNITS	SCALE	COUNT	DESCRIPTION OF REVISIONS	DESIGNED	CHECKED	DATE
mm	4 : 1	△	APPROVED : YH. ENAMI 09.01.19			
			CHECKED : HO. MIWA 09.01.19			
			DESIGNED : HN. ANDO 09.01.17			
			DRAWN : HN. ANDO 09.01.17			

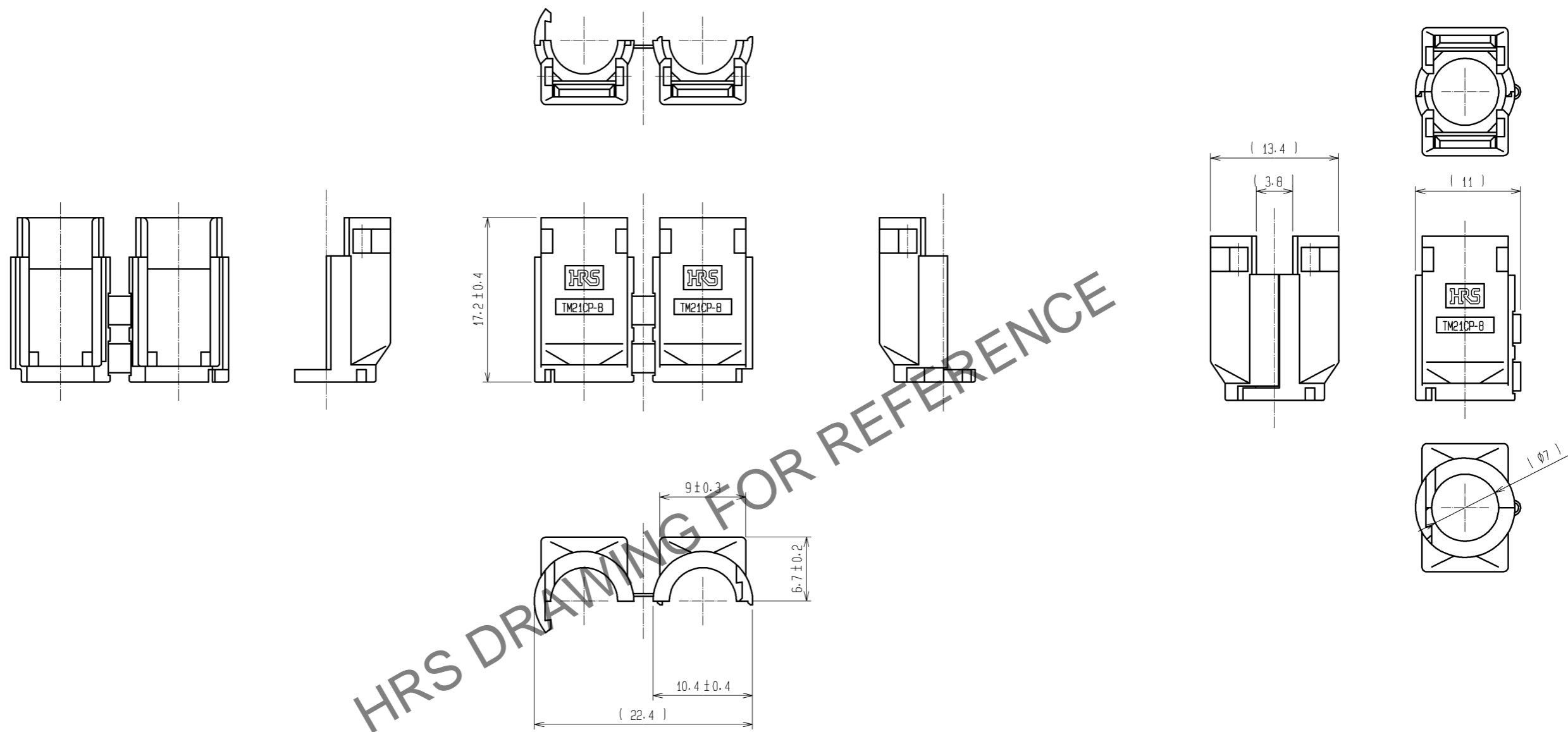
  

DRAWING NO.	EDC3-122165-02
PART NO.	TM21CP-88P(03)
CODE NO.	CL222-2884-1-03

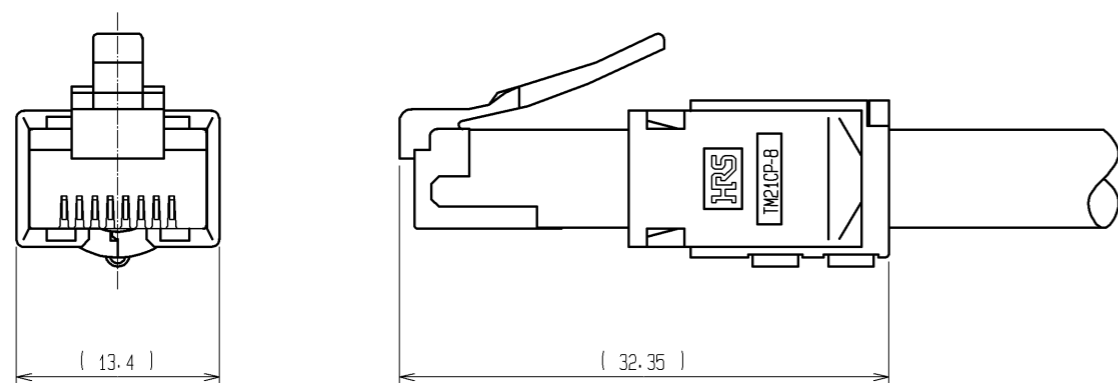
Dec.1.2024 Copyright 2024 HIROSE ELECTRIC CO., LTD. All Rights Reserved.  
 In case of consideration for using Automotive equipment / device which demand high reliability, kindly contact our sales window correspondents.

5 ATTACHED

FIGURE OF MATED COVER



5 ATTACHED COVER



図番:	EDC3-122165-02
製品名:	TM21CP-88P(03)
製品コード:	CL222-2884-1-03

△ 2/2