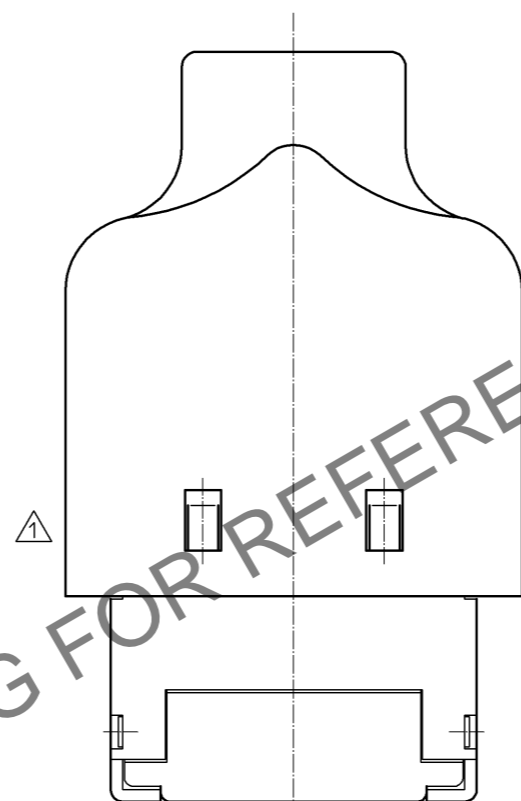
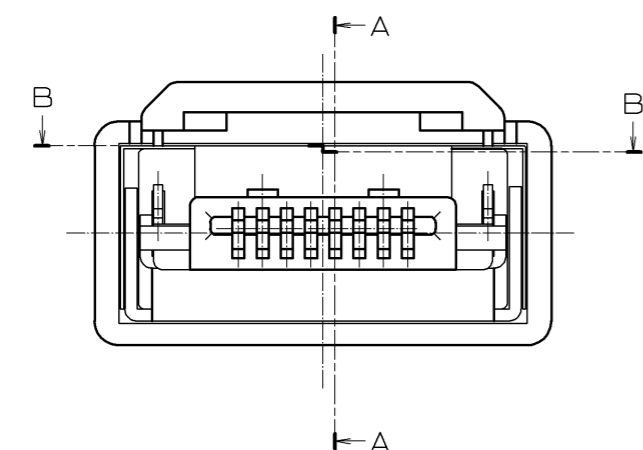
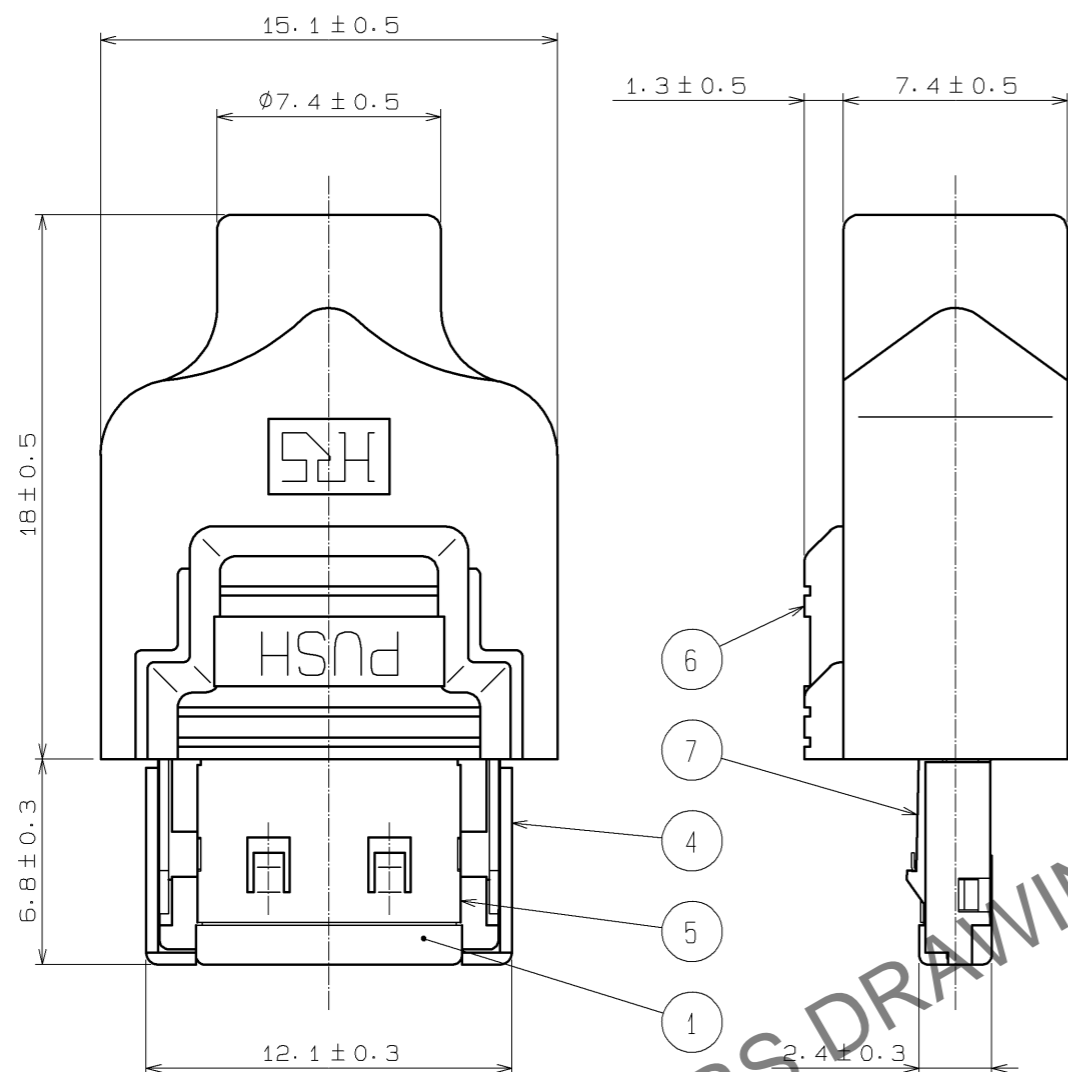
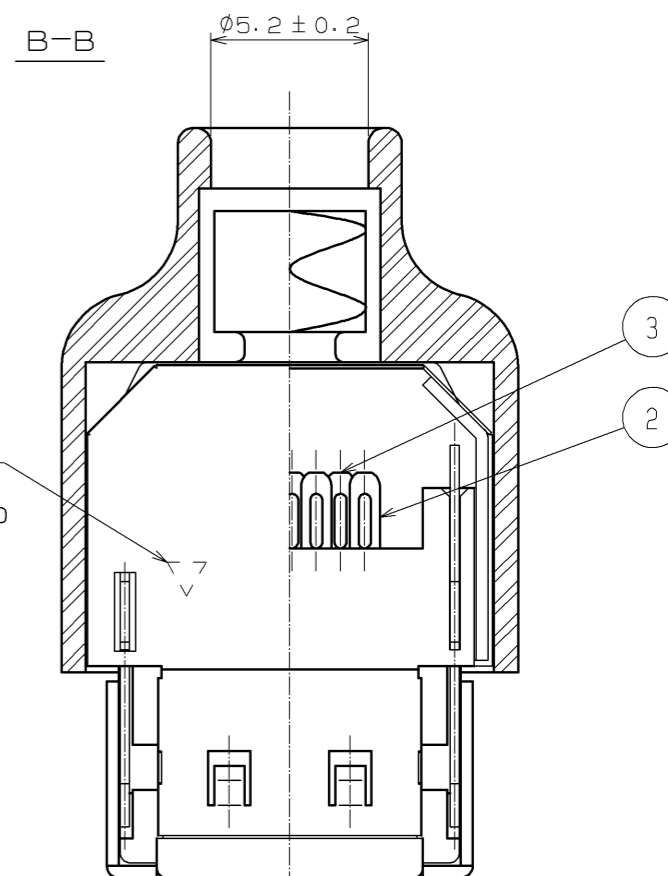


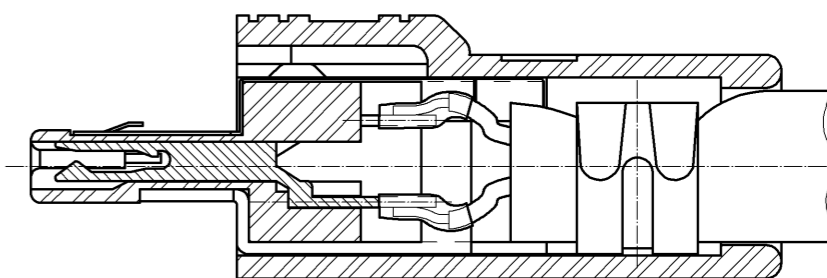
Apr.1.2024 Copyright 2024 HIROSE ELECTRIC CO., LTD. All Rights Reserved.
 In case of consideration for using Automotive equipment / device which demand high reliability, kindly contact our sales window correspondents.



POLARIZATION MARK
 (POLARIZATION MARK SHALL BE PROCESSED BY CHAMFERING.)



A-A
 CABLE ASSEMBLY DRAWING



NOTE 1. THE REFERENCE NO. ④, ⑤ AND ⑥ SHALL BE ATTACHED.

| NO. | MATERIAL | FINISH . REMARKS | NO. | MATERIAL | FINISH . REMARKS |
|-----|--------------|---|-----|-----------------|--------------------------------------|
| 3 | COPPER ALLOY | CONTACT AREA:GOLD PLATING 0.2μm min. LEAD AREA:GOLD PLATING 0.03μm min. [△] | 7 | STAINLESS STEEL | |
| 2 | COPPER ALLOY | UNDER PLATING:NICKEL PLATING 2μm min. | 6 | POLYCARBONATE | BLACK·UL94HB |
| 1 | PPS | BLACK·UL94V-0 | 5 | PHOSPHOR BRONZE | NICKEL PLATING 1μm min. [△] |
| | | | 4 | BRASS | NICKEL PLATING 1μm min. [△] |

| UNITS | SCALE | COUNT | DESCRIPTION OF REVISIONS | DESIGNED | CHECKED | DATE |
|---------------------------------|-------|-------|----------------------------|----------|---------|----------|
| mm | 4 : 1 | 4 | DIS-E-003308 | TS. ITO | TA. ASO | 10.06.14 |
| APPROVED : A0. SUZUKI 06.05.22 | | | DRAWING NO. EDC3-045931-03 | | | |
| CHECKED : NF. MIYAZAKI 06.05.22 | | | PART NO. 3240-8P-C(50) | | | |
| DESIGNED : HS. KIKUCHI 06.05.22 | | | CODE NO. CL232-0001-4-50 | | | |
| DRAWN : HS. KIKUCHI 06.05.22 | | | | | | |