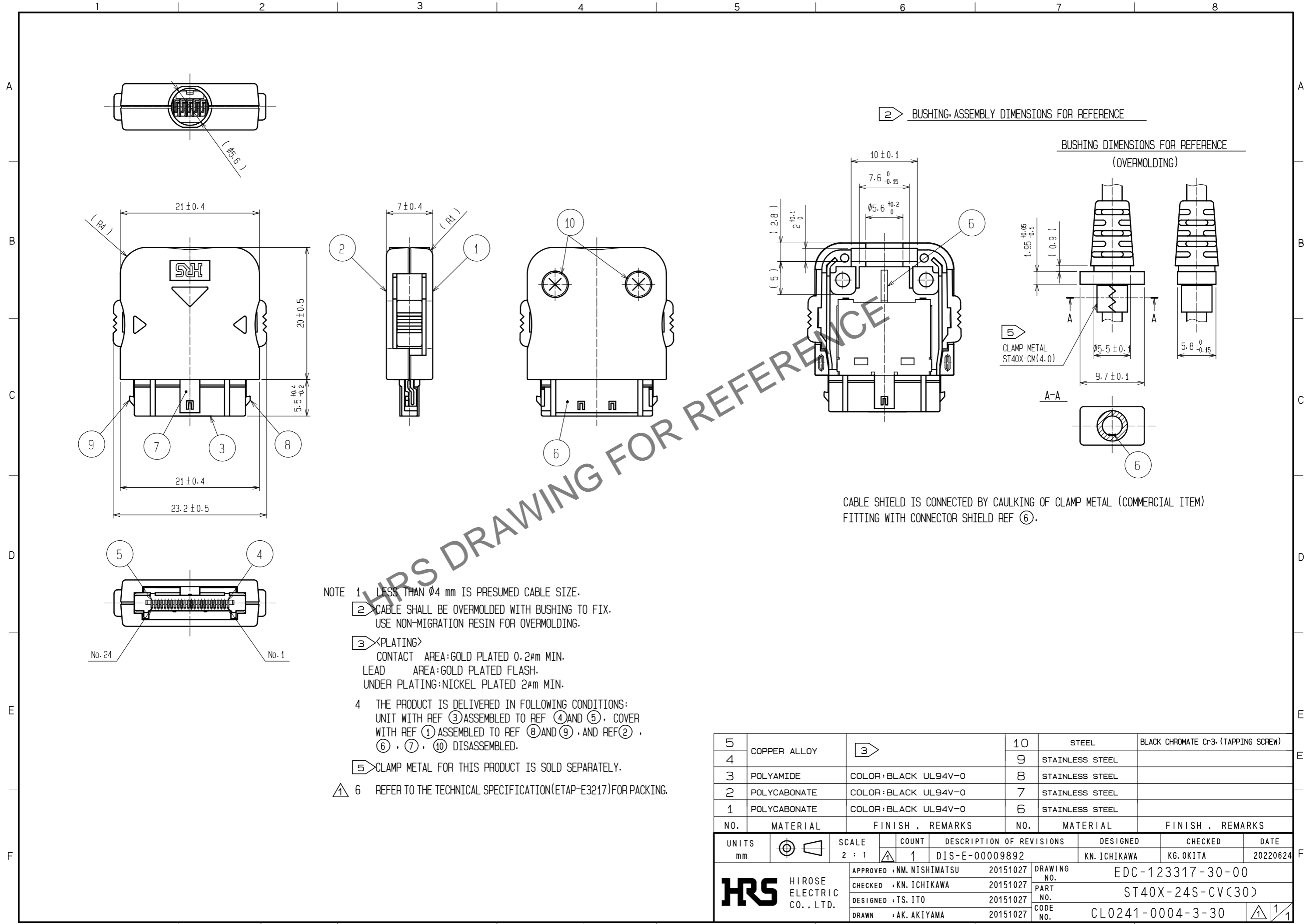


Jun.1.2024 Copyright 2024 HIROSE ELECTRIC CO., LTD. All Rights Reserved.
 In case of consideration for using Automotive equipment / device which demand high reliability, kindly contact our sales window correspondents.



NOTE 1 LESS THAN $\phi 4$ mm IS PRESUMED CABLE SIZE.
 ② CABLE SHALL BE OVERMOLDED WITH BUSHING TO FIX.
 USE NON-MIGRATION RESIN FOR OVERMOLDING.
 ③ <PLATING>
 CONTACT AREA: GOLD PLATED $0.2\mu\text{m}$ MIN.
 LEAD AREA: GOLD PLATED FLASH.
 UNDER PLATING: NICKEL PLATED $2\mu\text{m}$ MIN.
 4 THE PRODUCT IS DELIVERED IN FOLLOWING CONDITIONS:
 UNIT WITH REF ③ ASSEMBLED TO REF ④ AND ⑤. COVER
 WITH REF ① ASSEMBLED TO REF ⑧ AND ⑨. AND REF ②,
 ⑥, ⑦, ⑩ DISASSEMBLED.
 ⑤ CLAMP METAL FOR THIS PRODUCT IS SOLD SEPARATELY.
 ⑥ REFER TO THE TECHNICAL SPECIFICATION (ETAP-E3217) FOR PACKING.

NO.	MATERIAL	FINISH . REMARKS	NO.	MATERIAL	FINISH . REMARKS
5	COPPER ALLOY	③	10	STEEL	BLACK CHROMATE Cr3. (TAPPING SCREW)
4			9	STAINLESS STEEL	
3	POLYAMIDE	COLOR:BLACK UL94V-0	8	STAINLESS STEEL	
2	POLYCARBONATE	COLOR:BLACK UL94V-0	7	STAINLESS STEEL	
1	POLYCARBONATE	COLOR:BLACK UL94V-0	6	STAINLESS STEEL	

UNITS	SCALE	COUNT	DESCRIPTION OF REVISIONS	DESIGNED	CHECKED	DATE
mm	2 : 1	1	DIS-E-00009892	KN. ICHIKAWA	KG. OKITA	20220624

APPROVED	: NM. NISHIMATSU	20151027	DRAWING NO.	EDC-123317-30-00
CHECKED	: KN. ICHIKAWA	20151027	PART NO.	ST40X-24S-CV(30)
DESIGNED	: TS. ITO	20151027	CODE NO.	CL0241-0004-3-30
DRAWN	: AK. AKIYAMA	20151027		