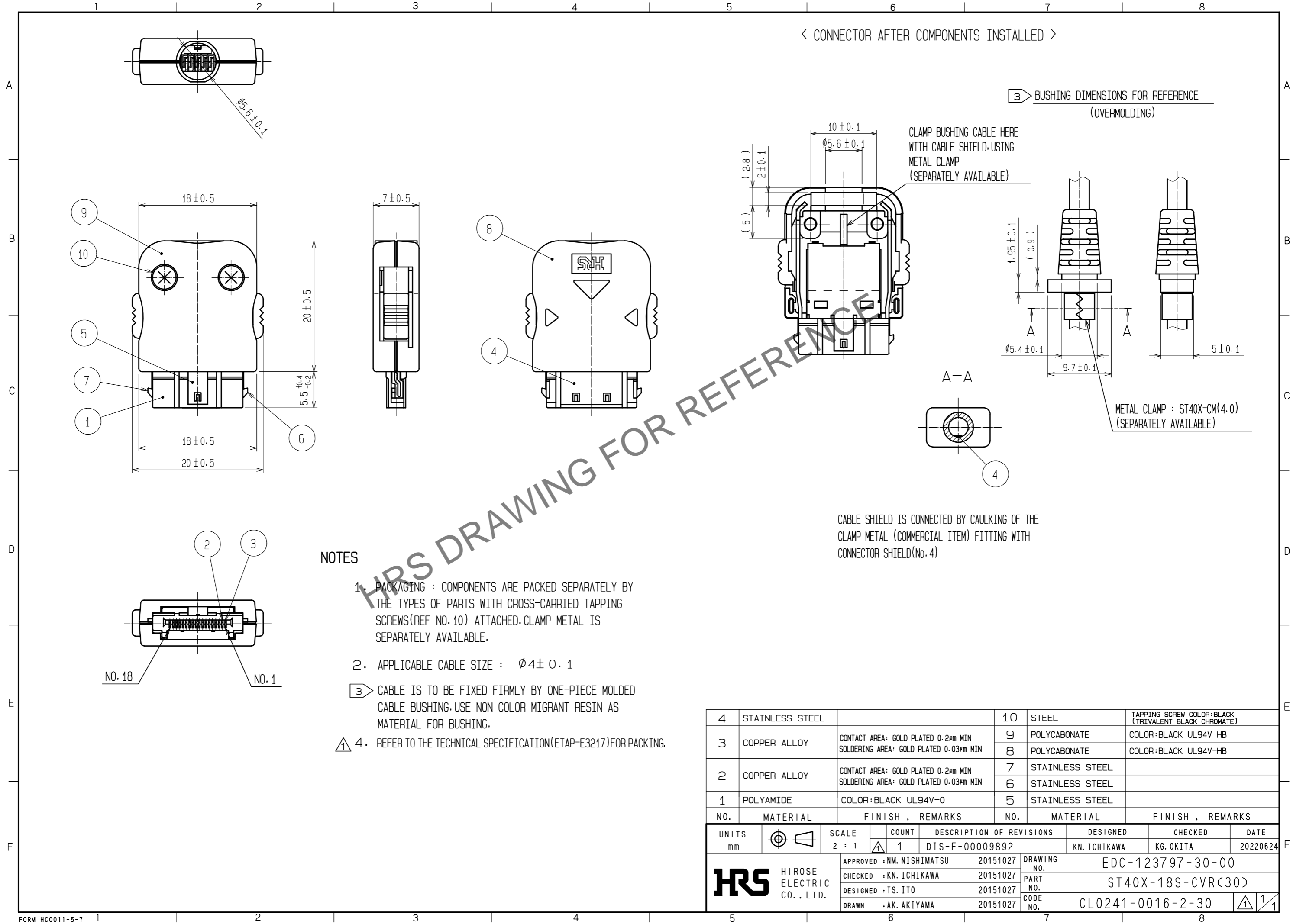


Jul.1.2024 Copyright 2024 HIROSE ELECTRIC CO., LTD. All Rights Reserved.
 In case of consideration for using Automotive equipment / device which demand high reliability, kindly contact our sales window correspondents.



NOTES

- 1. PACKAGING : COMPONENTS ARE PACKED SEPARATELY BY THE TYPES OF PARTS WITH CROSS-CARRIED TAPPING SCREWS(REF NO.10) ATTACHED. CLAMP METAL IS SEPARATELY AVAILABLE.
- 2. APPLICABLE CABLE SIZE : $\phi 4 \pm 0.1$
- 3. CABLE IS TO BE FIXED FIRMLY BY ONE-PIECE MOLDED CABLE BUSHING. USE NON COLOR MIGRANT RESIN AS MATERIAL FOR BUSHING.
- 4. REFER TO THE TECHNICAL SPECIFICATION(ETAP-E3217)FOR PACKING.

CABLE SHIELD IS CONNECTED BY CAULKING OF THE CLAMP METAL (COMMERCIAL ITEM) FITTING WITH CONNECTOR SHIELD(No. 4)

NO.	MATERIAL	FINISH .	REMARKS	NO.	MATERIAL	FINISH .	REMARKS
4	STAINLESS STEEL			10	STEEL		TAPPING SCREW COLOR:BLACK (TRIVALENT BLACK CHROMATE)
3	COPPER ALLOY	CONTACT AREA: GOLD PLATED 0.2µm MIN SOLDERING AREA: GOLD PLATED 0.03µm MIN		9	POLYCARBONATE		COLOR:BLACK UL94V-HB
				8	POLYCARBONATE		COLOR:BLACK UL94V-HB
2	COPPER ALLOY	CONTACT AREA: GOLD PLATED 0.2µm MIN SOLDERING AREA: GOLD PLATED 0.03µm MIN		7	STAINLESS STEEL		
				6	STAINLESS STEEL		
1	POLYAMIDE	COLOR:BLACK UL94V-0		5	STAINLESS STEEL		

UNITS	SCALE	COUNT	DESCRIPTION OF REVISIONS	DESIGNED	CHECKED	DATE
mm	2 : 1	1	DIS-E-00009892	KN. ICHIKAWA	KG. OKITA	20220624

APPROVED	CHECKED	DESIGNED	DRAWN	DATE	DRAWING NO.	PART NO.	CODE NO.
NM. NISHIMATSU	KN. ICHIKAWA	TS. ITO	AK. AKIYAMA	20151027	EDC-123797-30-00	ST40X-18S-CVR(30)	CL0241-0016-2-30