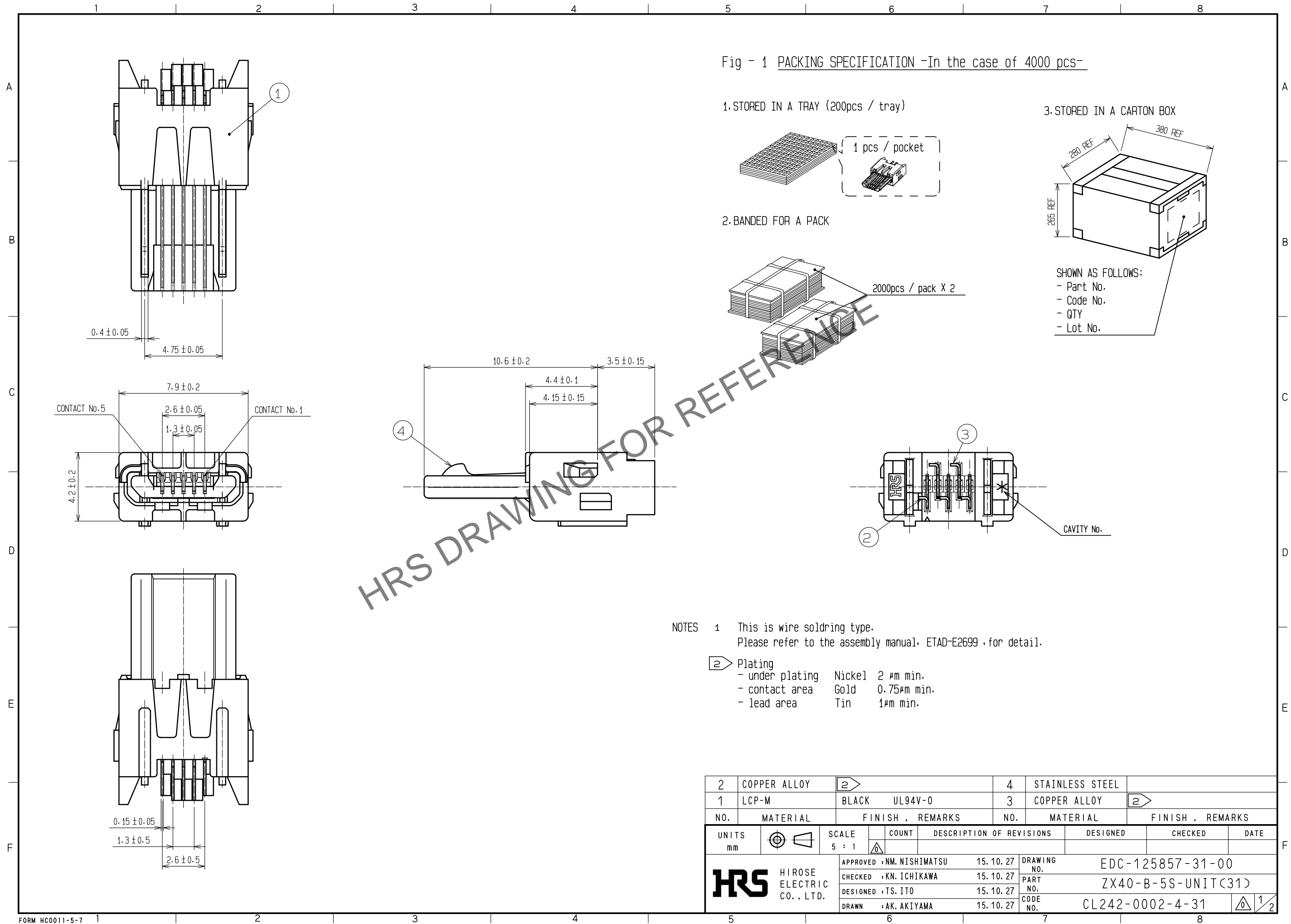


May.1.2024 Copyright 2024 HIROSE ELECTRIC CO., LTD. All Rights Reserved.  
In case of consideration for using Automotive equipment / device which demand high reliability, kindly contact our sales window correspondents.



May.1.2024 Copyright 2024 HIROSE ELECTRIC CO., LTD. All Rights Reserved.  
In case of consideration for using Automotive equipment / device which demand high reliability, kindly contact our sales window correspondents.

Fig - 2 SHIELDING-PLATE ASSEMBLY

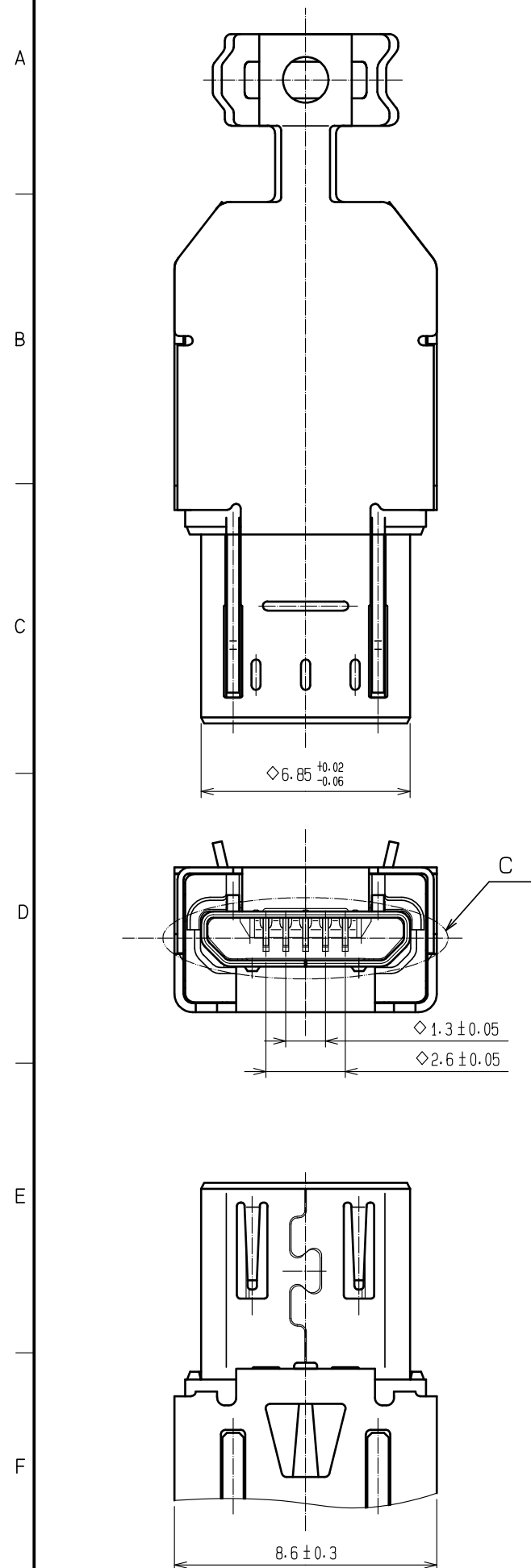
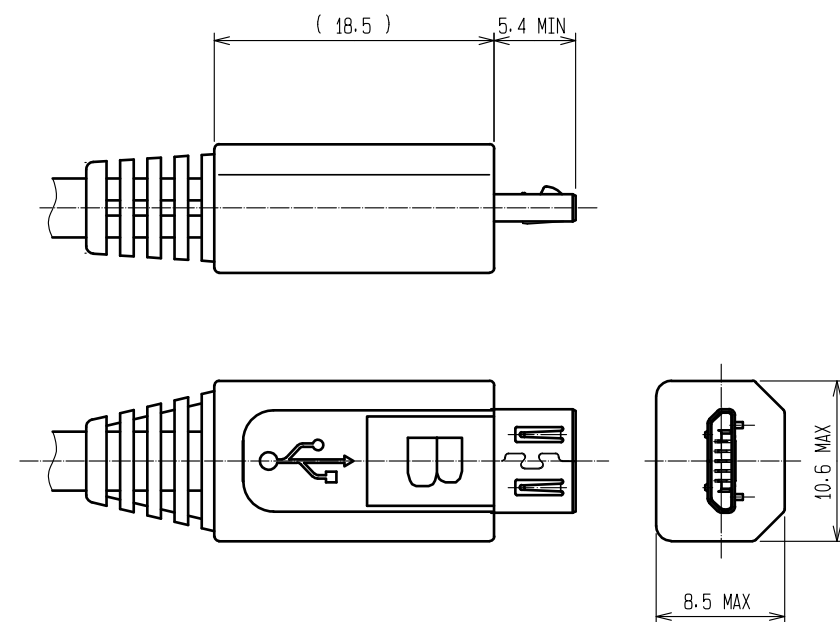
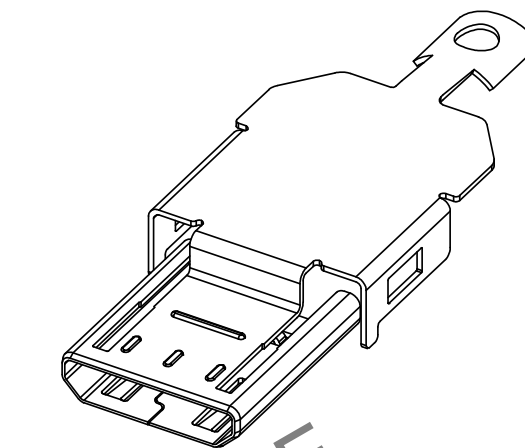


Fig - 3 OVER-MOLDING  
(Refer to USB specification)

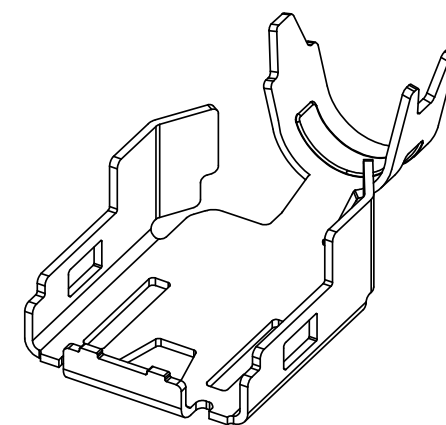


ZX40-B-SLDA  
Code No. CL242-0003-7



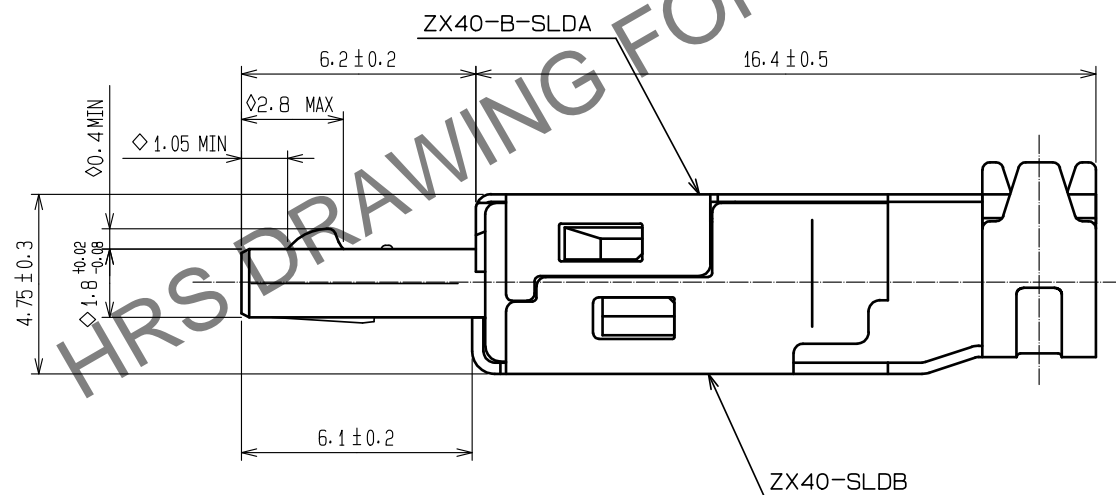
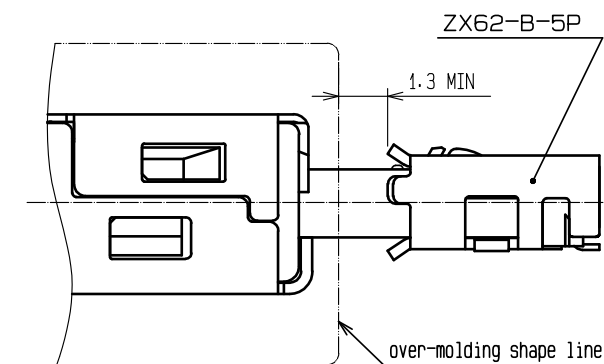
Note:  
- Sold separately  
- Delivered by the reel

ZX40-SLDB  
Code No. CL242-0004-0



Note:  
- Sold separately  
- Delivered by the reel  
- Applied to Ø3.8mm cable

Fig - 4 MATED CONDITION



NOTES 3 Shielding-plates, ZX40-B-SLDA and ZX40-SLDB, are used for assembly.  
4 \*◇\*symbol added to each dimension means critical dimension on USB specification.  
Please check them after over-molding.

HRS

DRAWING NO.	EDC-125857-31-00
PART NO.	ZX40-B-5S-UNIT(31)
CODE NO.	CL242-0002-4-31

2/2