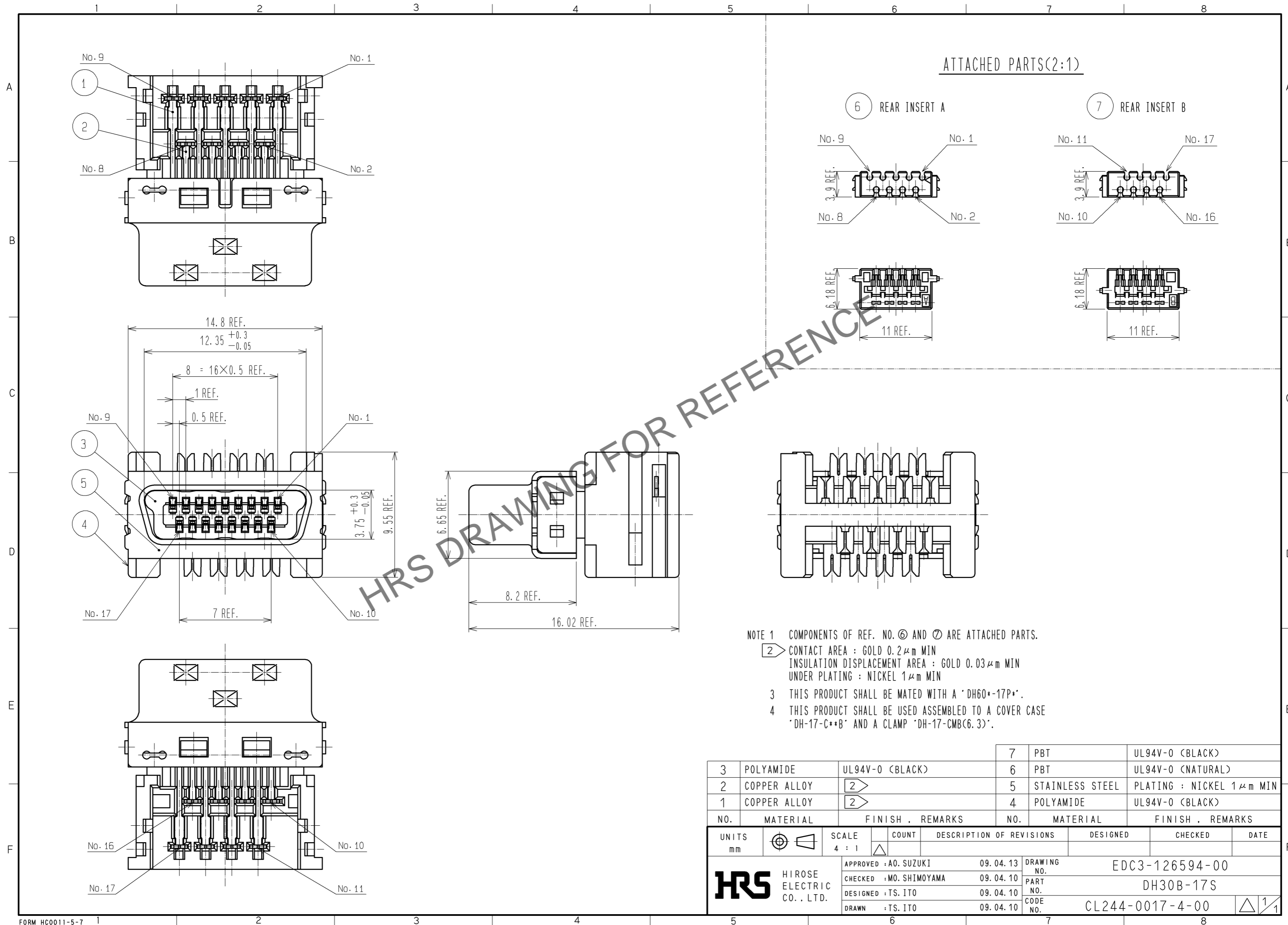


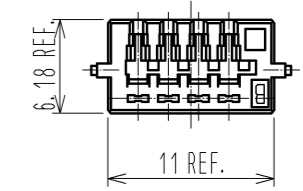
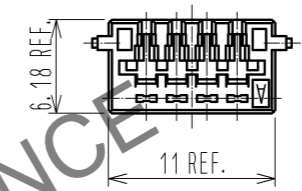
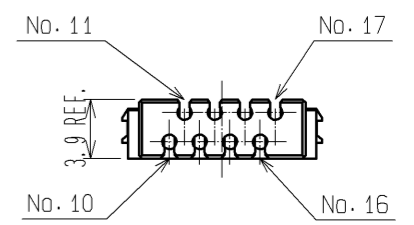
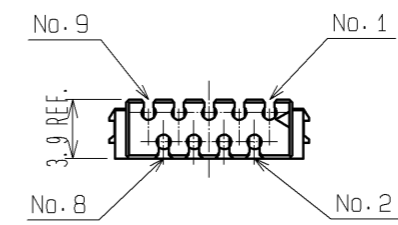
Nov.1.2024 Copyright 2024 HIROSE ELECTRIC CO., LTD. All Rights Reserved.
In case of consideration for using Automotive equipment / device which demand high reliability, kindly contact our sales window correspondents.



ATTACHED PARTS(2:1)

6 REAR INSERT A

7 REAR INSERT B



- NOTE 1 COMPONENTS OF REF. NO. ⑥ AND ⑦ ARE ATTACHED PARTS.
 ② CONTACT AREA : GOLD 0.2μm MIN
 INSULATION DISPLACEMENT AREA : GOLD 0.03μm MIN
 UNDER PLATING : NICKEL 1μm MIN
 3 THIS PRODUCT SHALL BE MATED WITH A 'DH60*-17P*'.
 4 THIS PRODUCT SHALL BE USED ASSEMBLED TO A COVER CASE 'DH-17-C**B' AND A CLAMP 'DH-17-CMB(6.3)'.

3	POLYAMIDE	UL94V-0 (BLACK)	7	PBT	UL94V-0 (BLACK)
2	COPPER ALLOY	②	6	PBT	UL94V-0 (NATURAL)
1	COPPER ALLOY	②	5	STAINLESS STEEL	PLATING : NICKEL 1μm MIN
			4	POLYAMIDE	UL94V-0 (BLACK)
NO.	MATERIAL	FINISH . REMARKS	NO.	MATERIAL	FINISH . REMARKS

UNITS mm		SCALE 4 : 1	COUNT △	DESCRIPTION OF REVISIONS	DESIGNED	CHECKED	DATE
APPROVED : A0. SUZUKI 09. 04. 13				DRAWING NO. EDC3-126594-00			
CHECKED : MO. SHIMOYAMA 09. 04. 10				PART NO. DH30B-17S			
DESIGNED : TS. ITO 09. 04. 10				CODE NO. CL244-0017-4-00			
DRAWN : TS. ITO 09. 04. 10				△ 1/1			