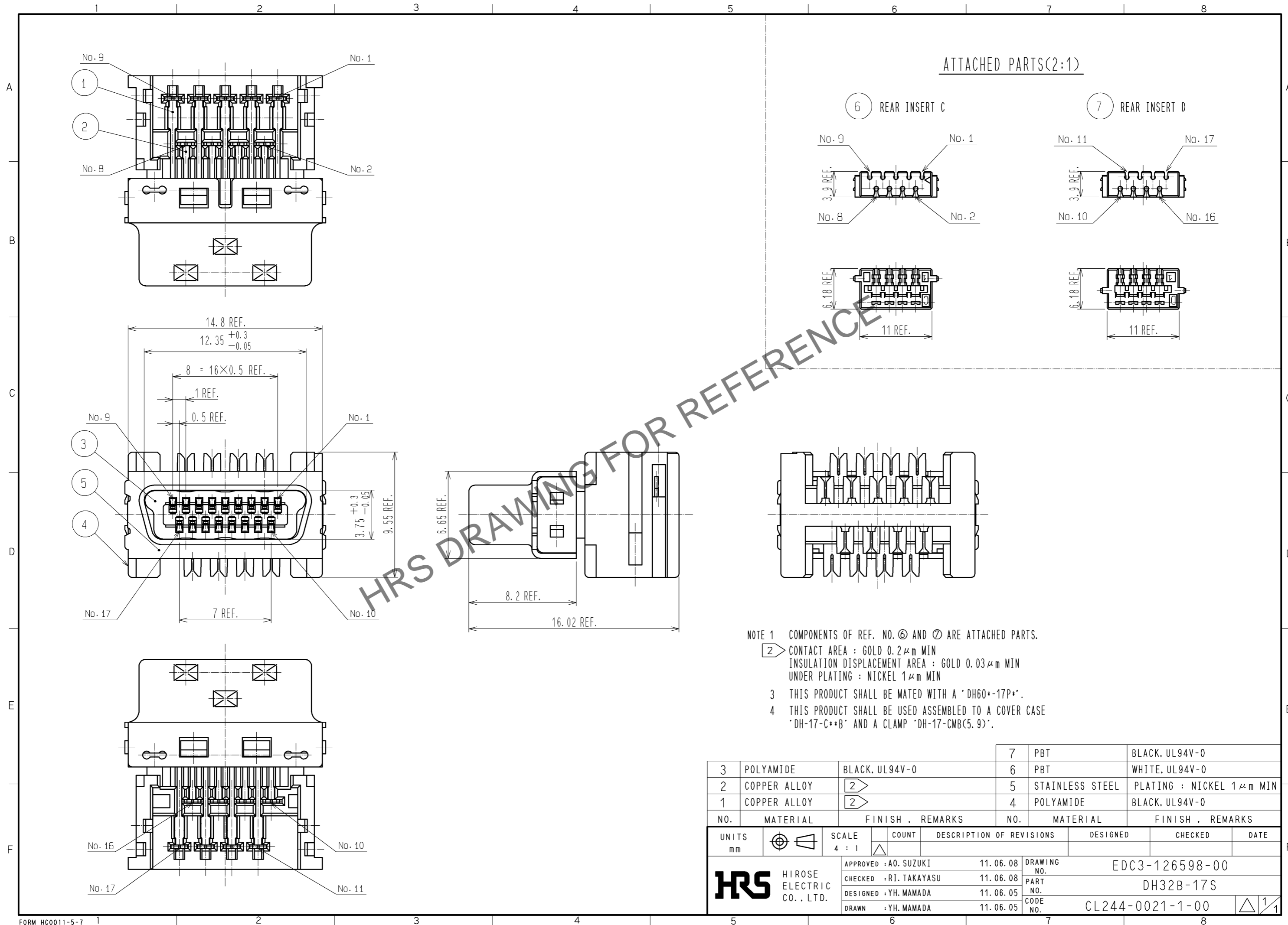


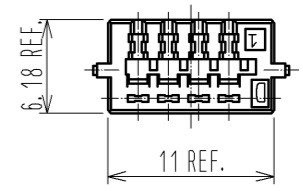
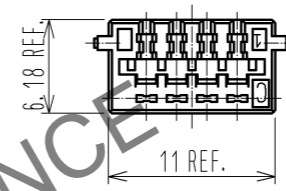
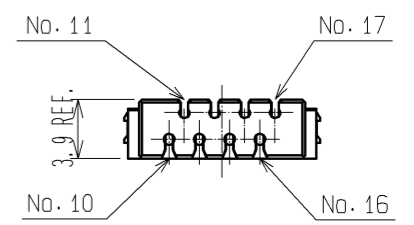
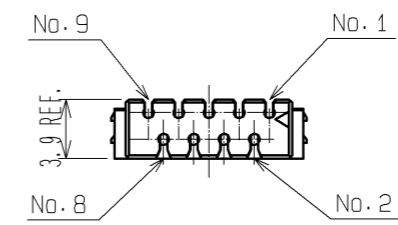
Nov.1.2024 Copyright 2024 HIROSE ELECTRIC CO., LTD. All Rights Reserved.
In case of consideration for using Automotive equipment / device which demand high reliability, kindly contact our sales window correspondents.



ATTACHED PARTS(2:1)

6 REAR INSERT C

7 REAR INSERT D



NOTE 1 COMPONENTS OF REF. NO. ⑥ AND ⑦ ARE ATTACHED PARTS.

- ② CONTACT AREA : GOLD 0.2μm MIN
INSULATION DISPLACEMENT AREA : GOLD 0.03μm MIN
UNDER PLATING : NICKEL 1μm MIN
- 3 THIS PRODUCT SHALL BE MATED WITH A 'DH60*-17P*'.
4 THIS PRODUCT SHALL BE USED ASSEMBLED TO A COVER CASE 'DH-17-C**B' AND A CLAMP 'DH-17-CMB(5.9)'.

NO.	MATERIAL	FINISH . REMARKS	NO.	MATERIAL	FINISH . REMARKS
3	POLYAMIDE	BLACK. UL94V-0	7	PBT	BLACK. UL94V-0
2	COPPER ALLOY	②	6	PBT	WHITE. UL94V-0
1	COPPER ALLOY	②	5	STAINLESS STEEL	PLATING : NICKEL 1μm MIN
			4	POLYAMIDE	BLACK. UL94V-0

UNITS	SCALE	COUNT	DESCRIPTION OF REVISIONS	DESIGNED	CHECKED	DATE
mm	4 : 1	△				
APPROVED : A0. SUZUKI			11.06.08	DRAWING NO. EDC3-126598-00		
CHECKED : RI. TAKAYASU			11.06.08	PART NO. DH32B-17S		
DESIGNED : YH. MAMADA			11.06.05	CODE NO. CL244-0021-1-00		
DRAWN : YH. MAMADA			11.06.05	△ 1/1		