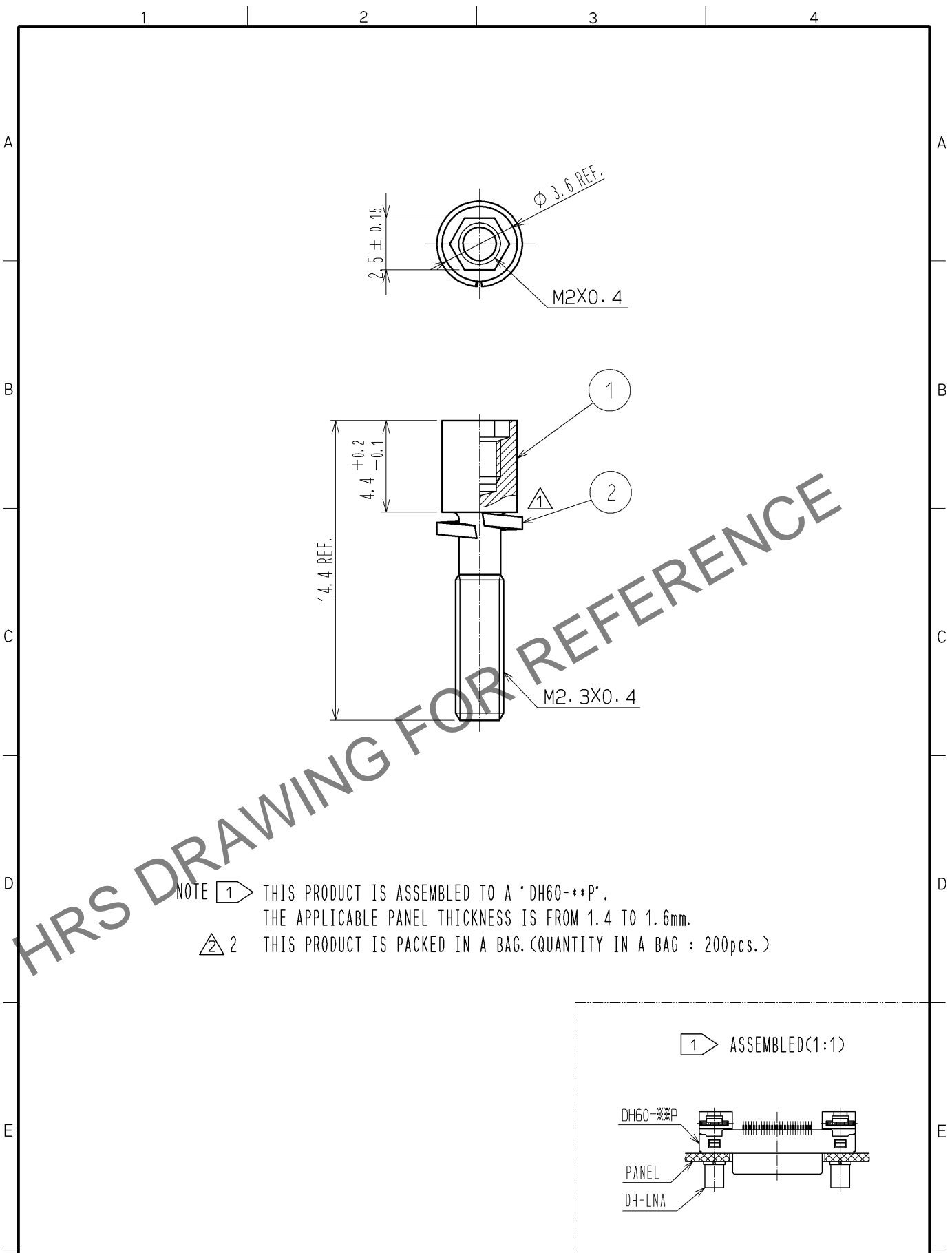
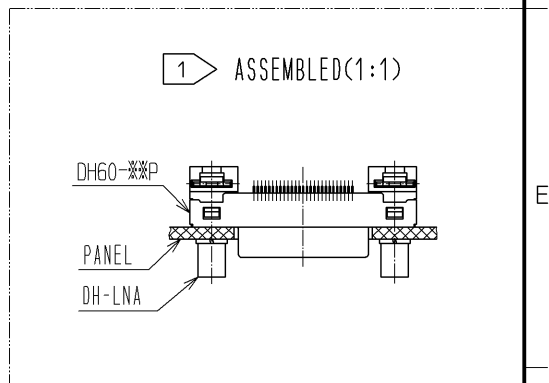


Nov.1.2024 Copyright 2024 HIROSE ELECTRIC CO., LTD. All Rights Reserved.  
 In case of consideration for using Automotive equipment / device which demand high reliability, kindly contact our sales window correspondents.



NOTE ① THIS PRODUCT IS ASSEMBLED TO A "DH60-\*\*P".  
 THE APPLICABLE PANEL THICKNESS IS FROM 1.4 TO 1.6mm.  
 △ 2 THIS PRODUCT IS PACKED IN A BAG. (QUANTITY IN A BAG : 200pcs.)



1	STEEL	OVER PLATING : NICKEL 5μm MIN UNDER PLATING : COPPER 1μm MIN	2	STEEL	OVER PLATING : NICKEL 5μm MIN UNDER PLATING : COPPER 1μm MIN		
NO.	MATERIAL	FINISH , REMARKS	NO.	MATERIAL	FINISH , REMARKS		
UNITS mm		SCALE 4 : 1	COUNT △ 1	DESCRIPTION OF REVISIONS DIS-E-003059	DESIGNED MO. SHIMOYAMA	CHECKED KN. ICHIKAWA	DATE 09.12.07
<b>HRS</b> HIROSE ELECTRIC CO., LTD.	APPROVED : AO. SUZUKI	09.04.27	DRAWING NO.	EDC4-126895-00			
	CHECKED : MO. SHIMOYAMA	09.04.24	PART NO.	DH-LNA			
	DESIGNED : TS. ITO	09.04.24	CODE NO.	CL244-0045-0-00			
	DRAWN : TS. ITO	09.04.24		△ 1 / 1			