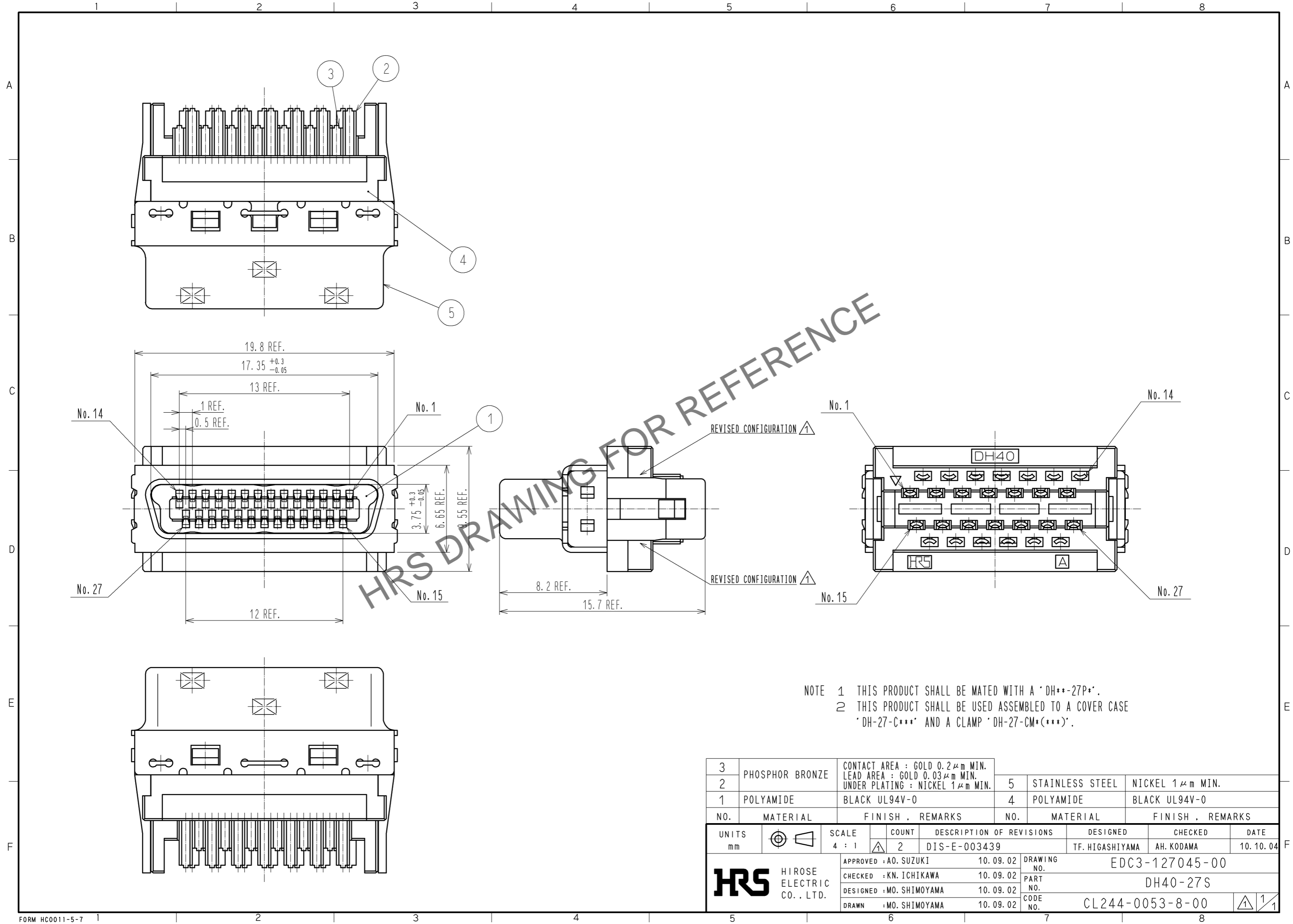


Oct.1.2024 Copyright 2024 HIROSE ELECTRIC CO., LTD. All Rights Reserved.  
 In case of consideration for using Automotive equipment / device which demand high reliability, kindly contact our sales window correspondents.



NOTE 1 THIS PRODUCT SHALL BE MATED WITH A 'DH\*\*-27P\*'.  
 2 THIS PRODUCT SHALL BE USED ASSEMBLED TO A COVER CASE 'DH-27-C\*\*\*' AND A CLAMP 'DH-27-CM\*(\*\*\*)'.

3	PHOSPHOR BRONZE	CONTACT AREA : GOLD 0.2 μm MIN. LEAD AREA : GOLD 0.03 μm MIN. UNDER PLATING : NICKEL 1 μm MIN.	5	STAINLESS STEEL	NICKEL 1 μm MIN.
2			4	POLYAMIDE	BLACK UL94V-0
1	POLYAMIDE	BLACK UL94V-0			
NO.	MATERIAL	FINISH . REMARKS	NO.	MATERIAL	FINISH . REMARKS
UNITS		SCALE	COUNT	DESCRIPTION OF REVISIONS	
mm		4 : 1	2	DIS-E-003439	
HIROSE ELECTRIC CO., LTD.			APPROVED : AO. SUZUKI	10.09.02	DESIGNED
			CHECKED : KN. ICHIKAWA	10.09.02	TF. HIGASHIYAMA
			DESIGNED : MO. SHIMOYAMA	10.09.02	CHECKED
			DRAWN : MO. SHIMOYAMA	10.09.02	AH. KODAMA
					DATE
					10.10.04
			APPROVED : AO. SUZUKI	10.09.02	DRAWING NO.
			CHECKED : KN. ICHIKAWA	10.09.02	EDC3-127045-00
			DESIGNED : MO. SHIMOYAMA	10.09.02	PART NO.
			DRAWN : MO. SHIMOYAMA	10.09.02	DH40-27S
					CODE NO.
					CL244-0053-8-00
					1/1