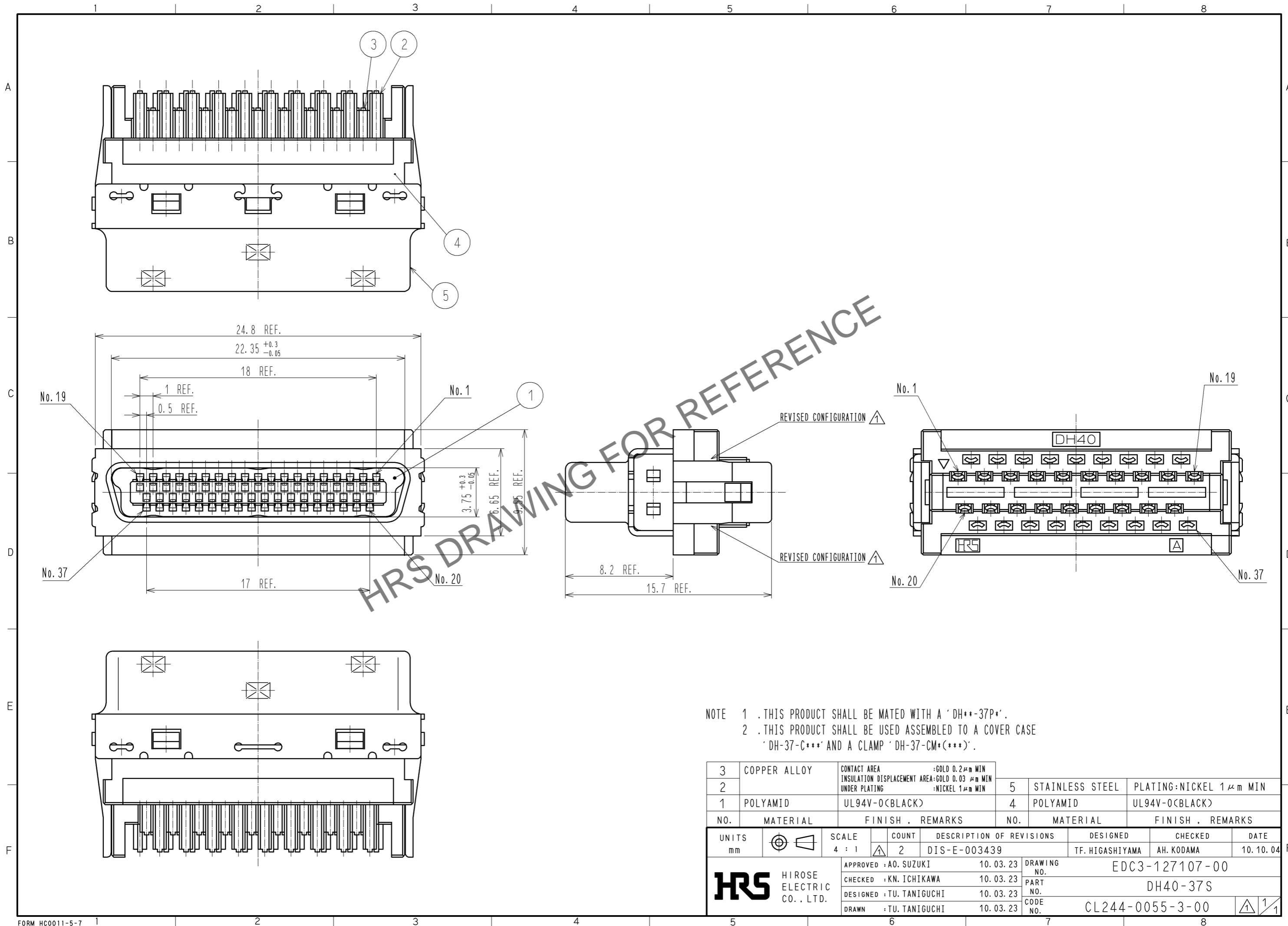


Nov.1.2024 Copyright 2024 HIROSE ELECTRIC CO., LTD. All Rights Reserved.  
In case of consideration for using Automotive equipment / device which demand high reliability, kindly contact our sales window correspondents.



NOTE 1 .THIS PRODUCT SHALL BE MATED WITH A 'DH\*\*-37P\*'.  
2 .THIS PRODUCT SHALL BE USED ASSEMBLED TO A COVER CASE 'DH-37-C\*\*\*' AND A CLAMP 'DH-37-CM\*(\*\*\*)'.

3	COPPER ALLOY	CONTACT AREA :GOLD 0.2 $\mu$ m MIN INSULATION DISPLACEMENT AREA:GOLD 0.03 $\mu$ m MIN UNDER PLATING :NICKEL 1 $\mu$ m MIN	5	STAINLESS STEEL	PLATING:NICKEL 1 $\mu$ m MIN
2			4	POLYAMID	UL94V-0(BLACK)
1	POLYAMID	UL94V-0(BLACK)			
NO.	MATERIAL	FINISH . REMARKS	NO.	MATERIAL	FINISH . REMARKS
UNITS mm		SCALE 4 : 1	COUNT 2	DESCRIPTION OF REVISIONS DIS-E-003439	
DESIGNED TF. HIGASHIYAMA		CHECKED AH. KODAMA		DATE 10.10.04	
APPROVED : A0. SUZUKI 10.03.23		DRAWING NO. EDC3-127107-00			
CHECKED : KN. ICHIKAWA 10.03.23		PART NO. DH40-37S			
DESIGNED : TU. TANIGUCHI 10.03.23		CODE NO. CL244-0055-3-00			
DRAWN : TU. TANIGUCHI 10.03.23					