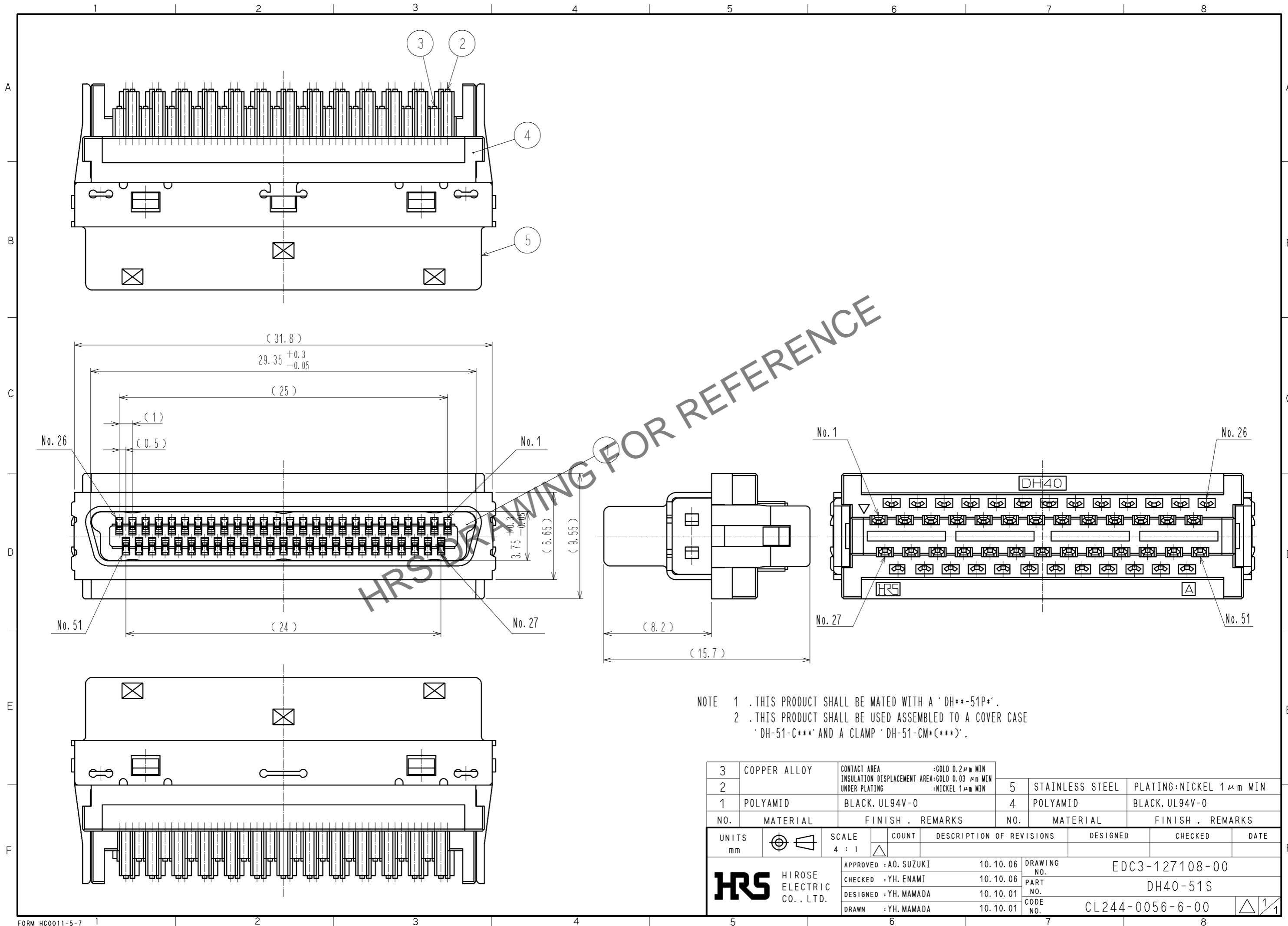


Nov.1.2024 Copyright 2024 HIROSE ELECTRIC CO., LTD. All Rights Reserved.  
 In case of consideration for using Automotive equipment / device which demand high reliability, kindly contact our sales window correspondents.



NOTE 1 . THIS PRODUCT SHALL BE MATED WITH A 'DH\*\*-51P\*'.  
 2 . THIS PRODUCT SHALL BE USED ASSEMBLED TO A COVER CASE 'DH-51-C\*\*\*' AND A CLAMP 'DH-51-CM\*(\*\*\*)'.

| 3                     | COPPER ALLOY | CONTACT AREA :GOLD 0.2μm MIN<br>INSULATION DISPLACEMENT AREA:GOLD 0.03 μm MIN<br>UNDER PLATING :NICKEL 1μm MIN | 5          | STAINLESS STEEL            | PLATING:NICKEL 1μm MIN |
|-----------------------|--------------|--|------------|----------------------------|------------------------|
| 2                     |              |  | 4          | POLYAMID                   | BLACK, UL94V-0         |
| 1                     | POLYAMID     | BLACK, UL94V-0   |            |                            |                        |
| NO.                   | MATERIAL     | FINISH . REMARKS   | NO.        | MATERIAL                   | FINISH . REMARKS       |
| UNITS<br>mm           |              | SCALE<br>4 : 1   | COUNT<br>△ | DESCRIPTION OF REVISIONS   |                        |
| DESIGNED              |              | CHECKED  |            | DATE                       |                        |
| APPROVED : A0. SUZUKI |              | 10.10.06   |            | DRAWING NO. EDC3-127108-00 |                        |
| CHECKED : YH. ENAMI   |              | 10.10.06   |            | PART NO. DH40-51S          |                        |
| DESIGNED : YH. MAMADA |              | 10.10.01   |            | CODE NO. CL244-0056-6-00   |                        |
| DRAWN : YH. MAMADA    |              | 10.10.01   |            | △ 1/1                      |                        |