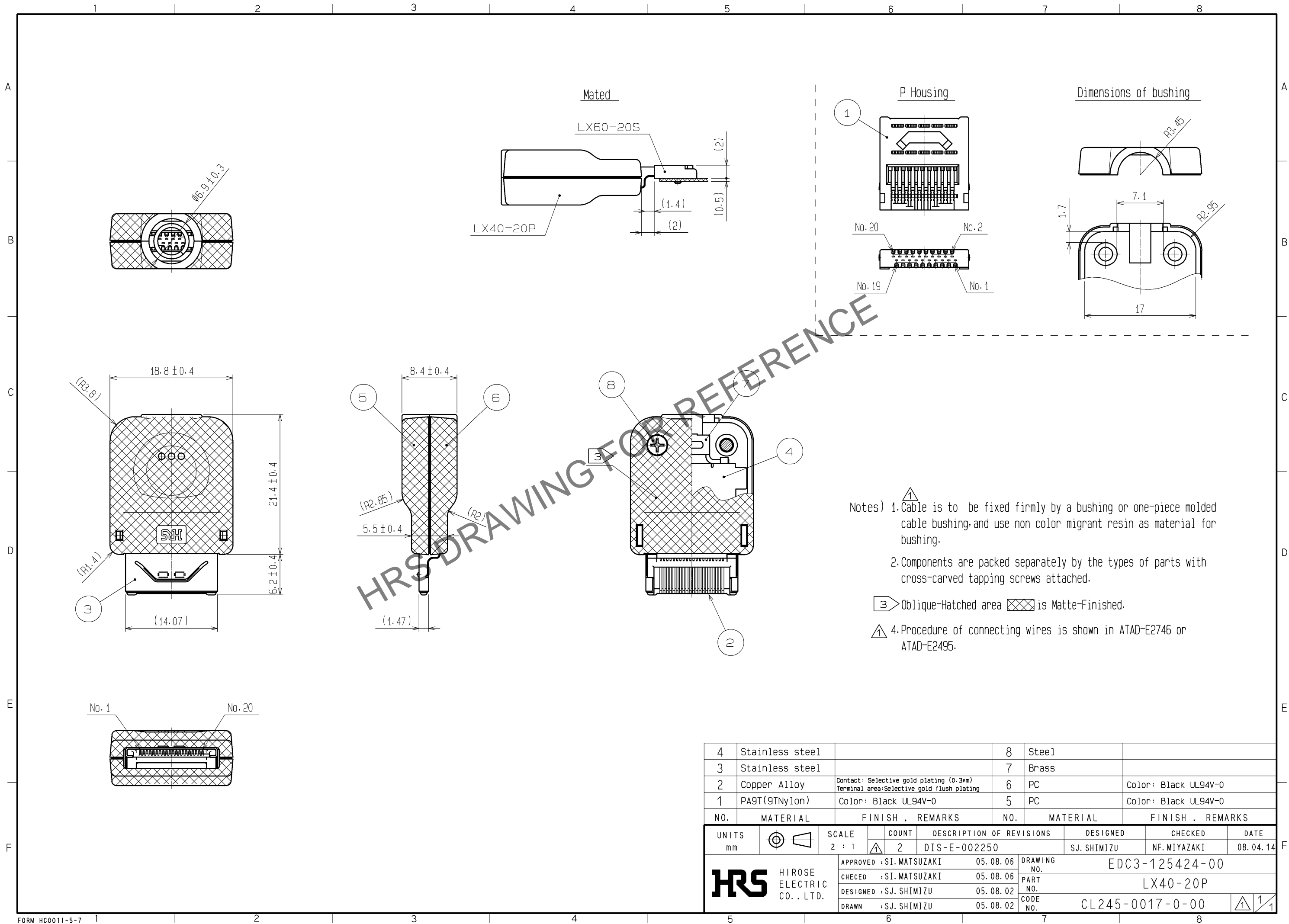


May.1.2024 Copyright 2024 HIROSE ELECTRIC CO., LTD. All Rights Reserved.
In case of consideration for using Automotive equipment / device which demand high reliability, kindly contact our sales window correspondents.



4	Stainless steel		8	Steel	
3	Stainless steel		7	Brass	
2	Copper Alloy	Contact: Selective gold plating (0.3μm) Terminal area: Selective gold flush plating	6	PC	Color: Black UL94V-0
1	PA9T(9TNylon)	Color: Black UL94V-0	5	PC	Color: Black UL94V-0
NO.	MATERIAL	FINISH , REMARKS	NO.	MATERIAL	FINISH , REMARKS
UNITS mm		SCALE 2 : 1	COUNT 2	DESCRIPTION OF REVISIONS DIS-E-002250	DESIGNED S.J. SHIMIZU
HIROSE ELECTRIC CO., LTD.		APPROVED : SI. MATSUZAKI	05. 08. 06	DRAWING NO. EDC3-125424-00	
		CHECED : SI. MATSUZAKI	05. 08. 06	PART NO. LX40-20P	
		DESIGNED : S.J. SHIMIZU	05. 08. 02	CODE NO. CL245-0017-0-00	
		DRAWN : S.J. SHIMIZU	05. 08. 02		
					DATE 08. 04. 14