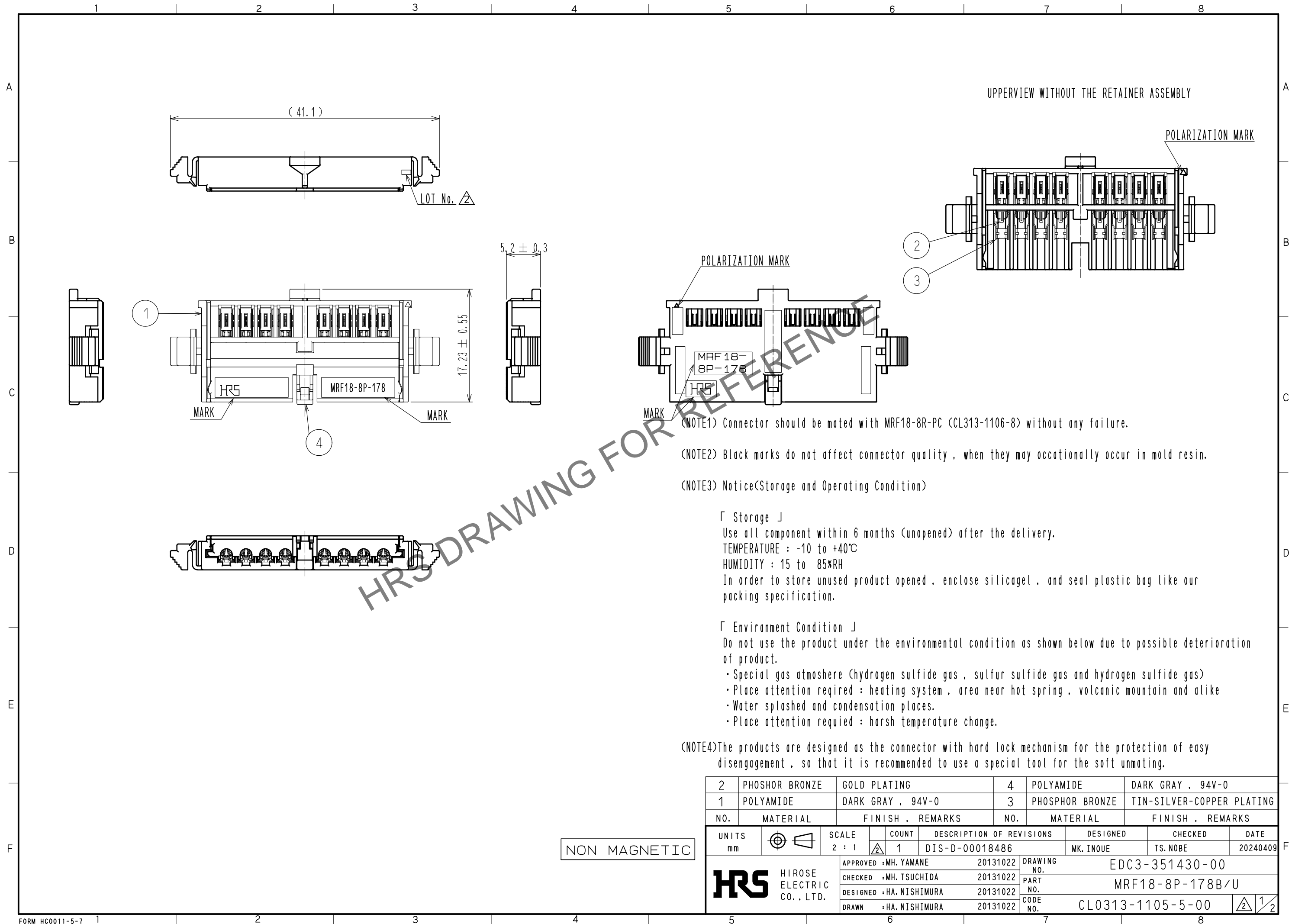


May.1.2024 Copyright 2024 HIROSE ELECTRIC CO., LTD. All Rights Reserved.  
In case of consideration for using Automotive equipment / device which demand high reliability, kindly contact our sales window correspondents.



(NOTE1) Connector should be mated with MRF18-8R-PC (CL313-1106-8) without any failure.  
(NOTE2) Black marks do not affect connector quality , when they may occasionally occur in mold resin.  
(NOTE3) Notice(Storage and Operating Condition)

「 Storage 」  
Use all component within 6 months (unopened) after the delivery.  
TEMPERATURE : -10 to +40℃  
HUMIDITY : 15 to 85%RH  
In order to store unused product opened , enclose silicagel , and seal plastic bag like our packing specification.

「 Environment Condition 」  
Do not use the product under the environmental condition as shown below due to possible deterioration of product.  
• Special gas atmosphere (hydrogen sulfide gas , sulfur sulfide gas and hydrogen sulfide gas)  
• Place attention required : heating system , area near hot spring , volcanic mountain and alike  
• Water splashed and condensation places.  
• Place attention required : harsh temperature change.

(NOTE4)The products are designed as the connector with hard lock mechanism for the protection of easy disengagement , so that it is recommended to use a special tool for the soft unmating.

2	PHOSHOR BRONZE	GOLD PLATING	4	POLYAMIDE	DARK GRAY , 94V-0
1	POLYAMIDE	DARK GRAY , 94V-0	3	PHOSPHOR BRONZE	TIN-SILVER-COPPER PLATING
NO.	MATERIAL	FINISH , REMARKS	NO.	MATERIAL	FINISH , REMARKS
UNITS mm		SCALE 2 : 1	COUNT 1	DESCRIPTION OF REVISIONS DIS-D-00018486	DESIGNED MK. INOUE
HIROSE ELECTRIC CO., LTD.		APPROVED : MH. YAMANE	20131022	DRAWING NO.	EDC3-351430-00
		CHECKED : MH. TSUCHIDA	20131022	PART NO.	MRF18-8P-178B/U
		DESIGNED : HA. NISHIMURA	20131022	CODE NO.	CL0313-1105-5-00
		DRAWN : HA. NISHIMURA	20131022		
					DATE 20240409

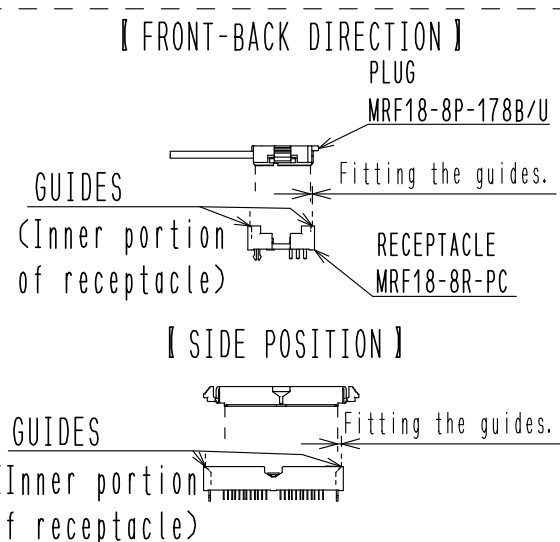
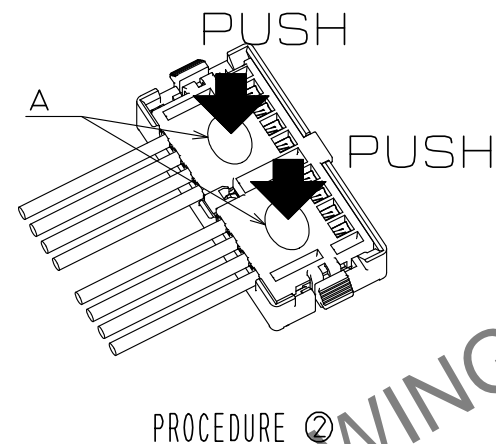
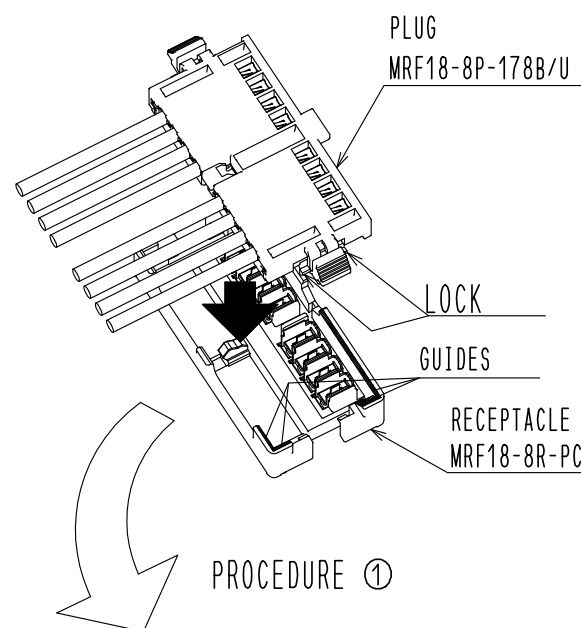
May.1.2024 Copyright 2024 HIROSE ELECTRIC CO., LTD. All Rights Reserved.  
In case of consideration for using Automotive equipment / device which demand high reliability, kindly contact our sales window correspondents.

# OPERATION MANUAL FOR MRF18 SERIES

## MATING PROCEDURE

- ①Insert the plug into the receptacle along the guides of the corner edges of receptacle.
- ②Push two center areas of the plug , which shown is the drawing below.  
You can get the click feeling when the lock of the plug is set.

NOTE : Push the plug completely to the end.

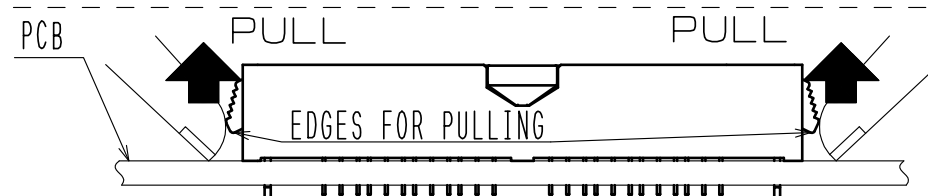
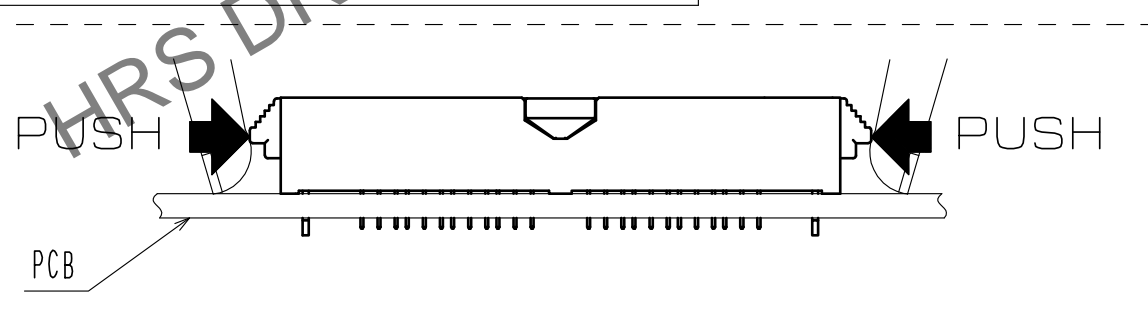
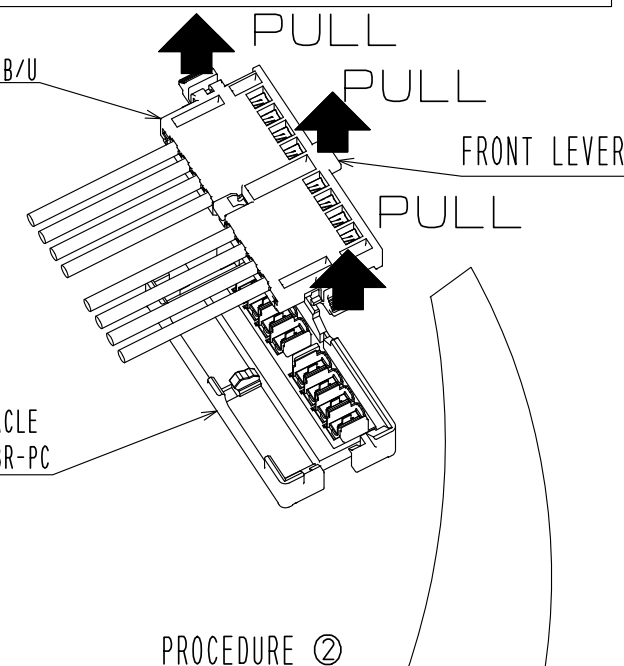
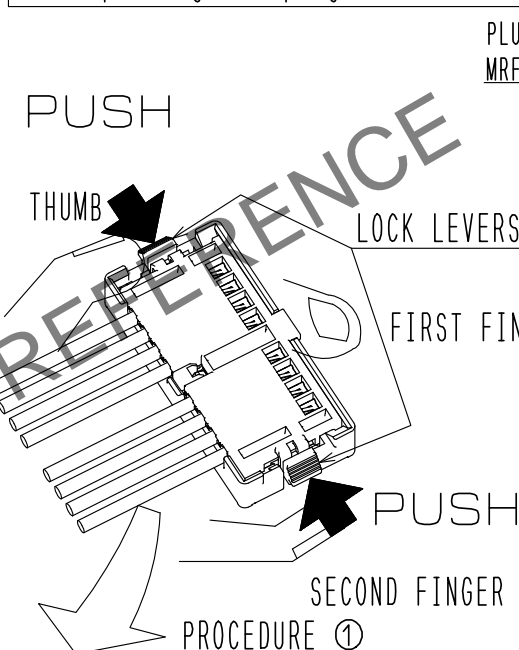


## UNMATING PROCEDURE

- ①Push the lock levers of the plug at the both sides in the direction of the arrows.
- ②Pull up the front lever of the plug vertically in the condition of pushing both side lock levers.

NOTE : Push the lock levers of the plug as completely as possible.

Please be careful not hurt nails and others because the unmating force is strong when pulling the plug.



Pull up the front lever and the edges of lock levers of the plug vertically at the same time , catching and pushing the edges of lock levers with finger at the both sides

Please be careful not hurt nails and others because the unmating force is strong when pulling the plug.

**HRS**

DRAWING NO.	EDC3-351430-00
PART NO.	MRF18-8P-178B/U
CODE NO.	CL0313-1105-5-00

2/2