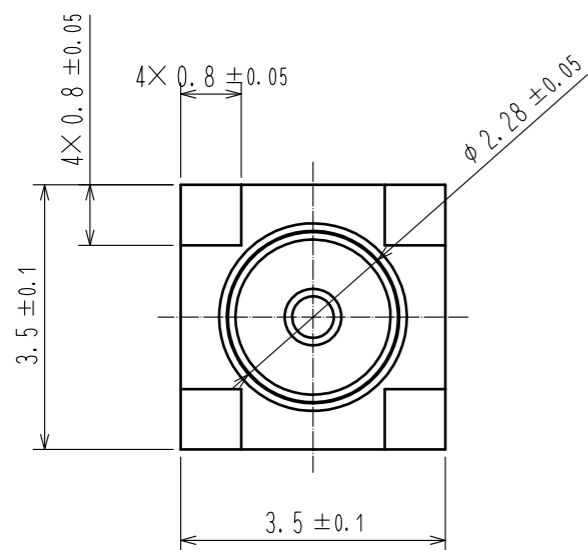
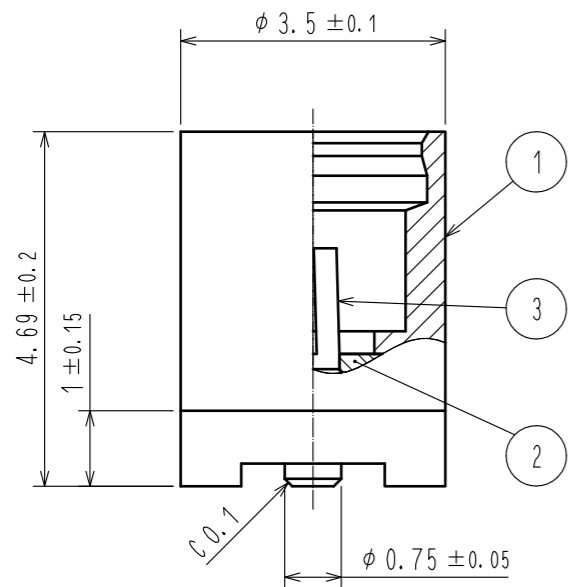
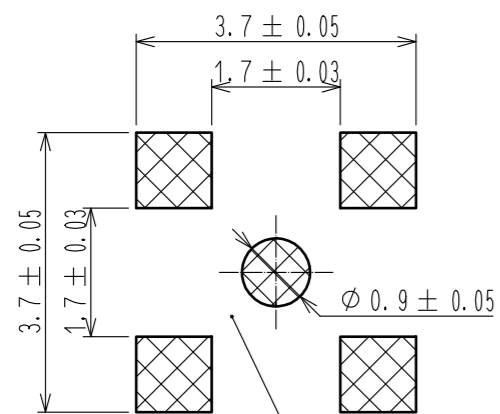


Feb.1.2026 Copyright 2026 HIROSE ELECTRIC CO., LTD. All Rights Reserved.
 In case of consideration for using Automotive equipment / device which demand high reliability, kindly contact our sales window correspondents.

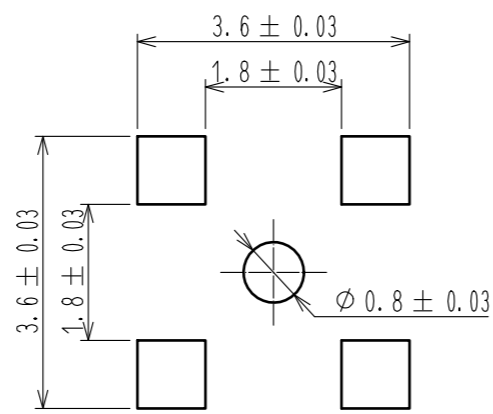


Recommended PCB layout
(Mounting surface side)

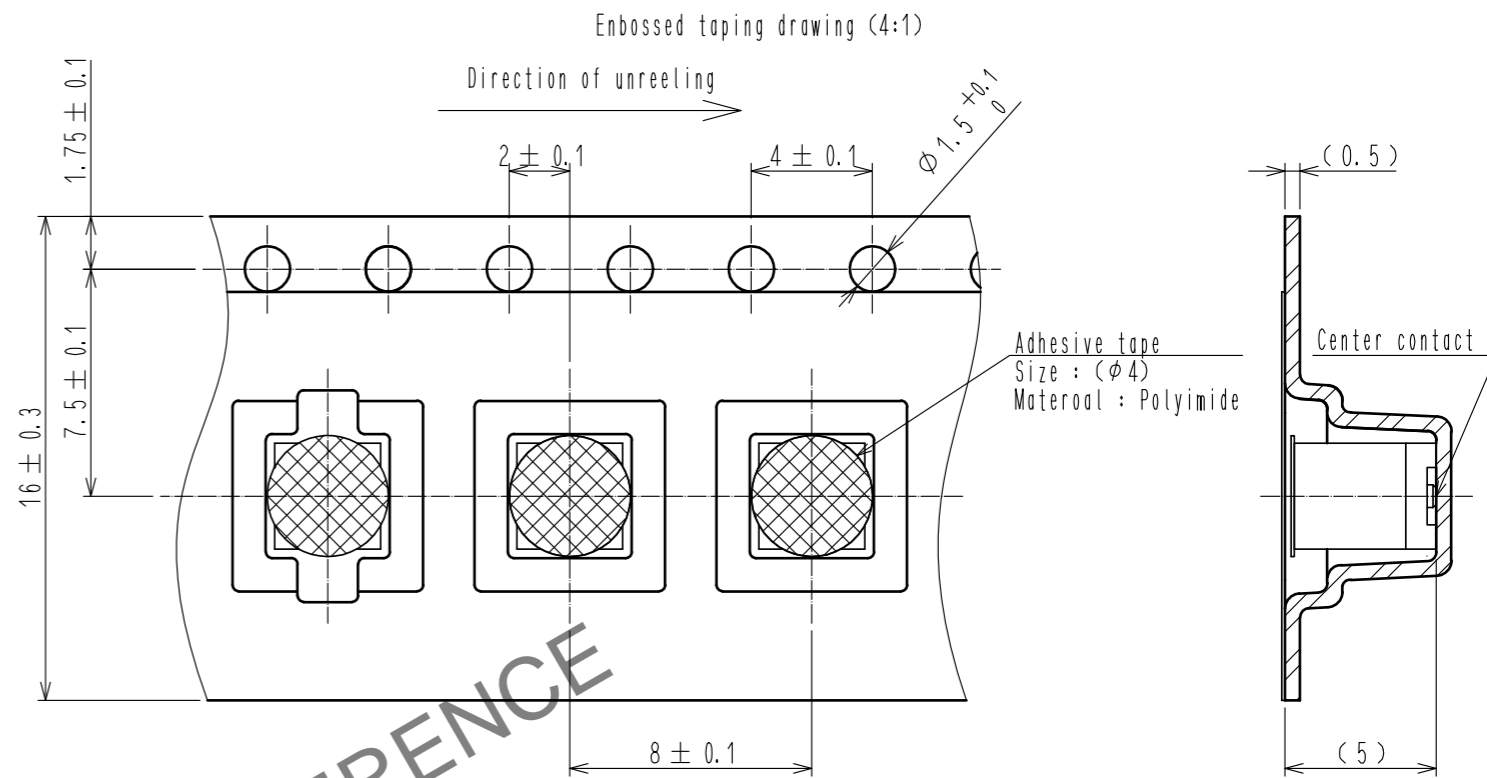


Cut-out prohibition area

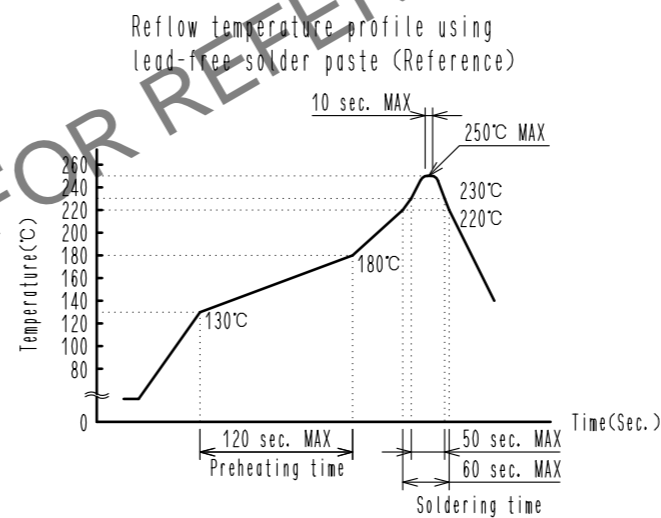
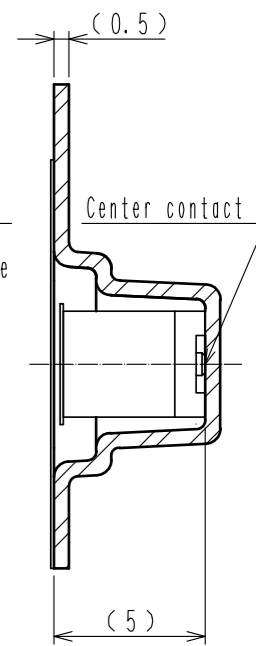
Recommended metal mask dimensions
Metal mask thickness: 0.13mm



Note 1. The quantity of MMCX-R-SMT-4 is 500 connectors per reel.



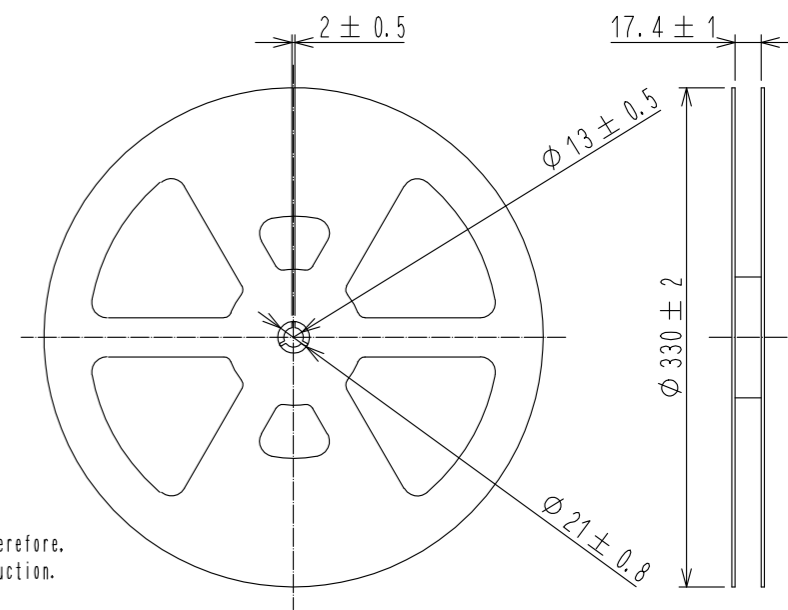
Adhesive tape
Size : (φ4)
Material : Polyimide



Reflow method : IR reflow
 Number of Reflow cycles : 2 cycles MAX.
 1) Reflow time
 220°C, 60 sec. MAX.
 230°C, 50 sec. MAX.
 (Peak temperature 250°C, 10 sec. MAX.)
 2) Pre-heat time
 130°C to 180°C, 120 sec. MAX.

This temperature profile is per the conditions shown above.
 Additional factors, such as solder paste type,
 PCB size and other mounted components could affect the profile, therefore,
 a thorough evaluation mounting condition is required prior to production.
 Temperature is measured at contact lead.

Reel drawing (1:5)
Material: PS Color: Black



2	PTFE		3	BERYLLIUM COPPER	GOLD PLATING
1	BRASS	GOLD PLATING			
NO.	MATERIAL	FINISH, REMARKS	NO.	MATERIAL	FINISH, REMARKS
UNITS	mm	SCALE	COUNT	DESCRIPTION OF REVISIONS	DESIGNED
		10 : 1	△		CHECKED
					DATE
APPROVED : TO. KATAYAMA			20190604		
CHECKED : TO. KATAYAMA			20190604		
DESIGNED : NK. OOSAWA			20190604		
DRAWN : NK. OOSAWA			20190604		
DRAWING NO.				EDC-356607-00-00	
PART NO.				MMCX-R-SMT-4	
CODE NO.				CL339-0039-0-00	