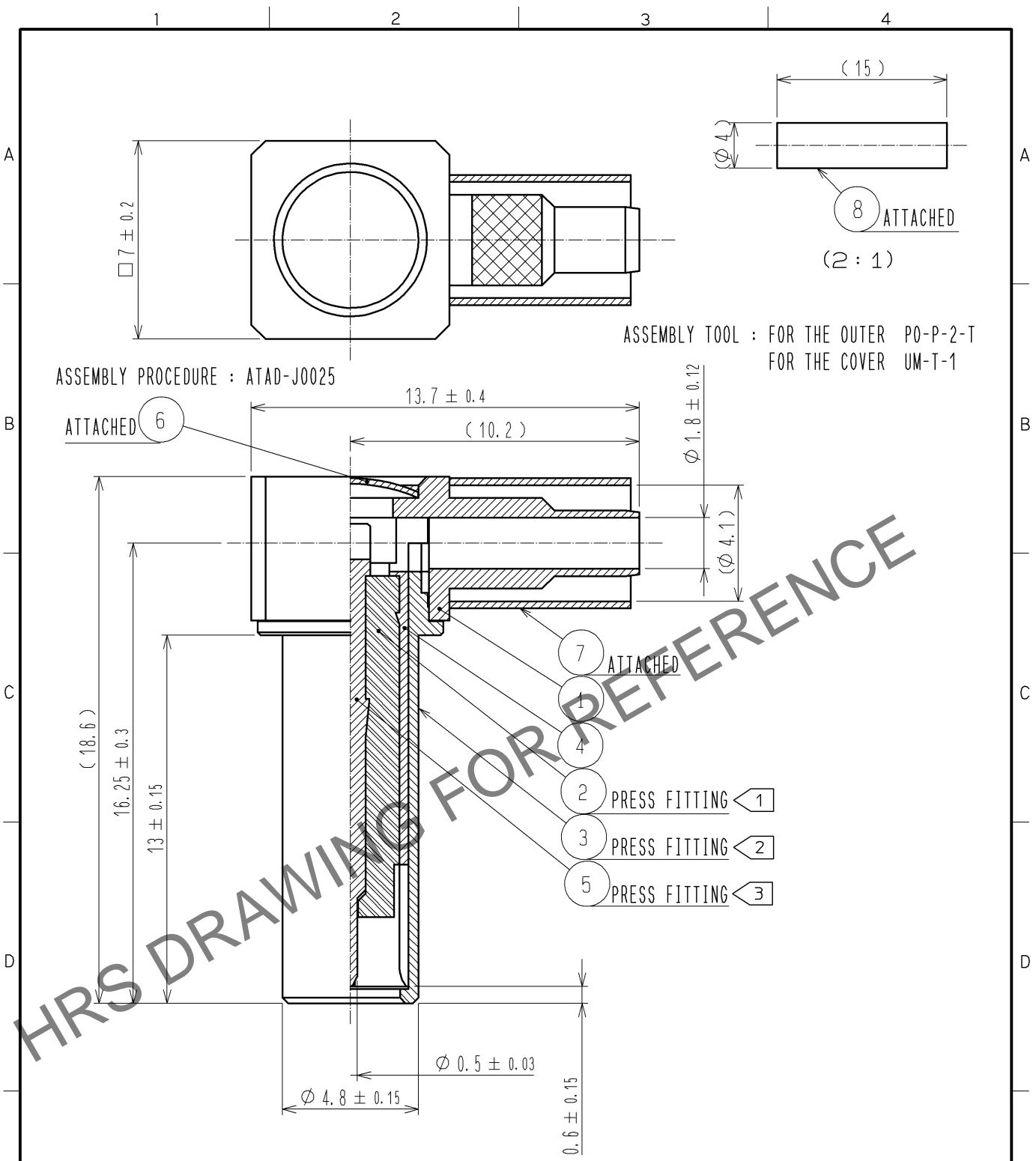


Apr.1.2024 Copyright 2024 HIROSE ELECTRIC CO., LTD. All Rights Reserved.
In case of consideration for using Automotive equipment / device which demand high reliability, kindly contact our sales window correspondents.



ASSEMBLY PROCEDURE : ATAD-J0025

ASSEMBLY TOOL : FOR THE OUTER PO-P-2-T
FOR THE COVER UM-T-1

NOTE 1. This product is intended to be fully mated with MS-147<CL358-0150-5>.
Please design the mating structure so that it can be retained the fully mated condition.

4	PHOSPHOR BLONZE	NICKEL PLATING	8	POLYOLEFIN	HEAT SHRINK TUBING
3	PHOSPHOR BRONZE	NICKEL PLATING	7	COPPER	NICKEL PLATING
2	PTFE		6	BRASS	NICKEL PLATING
1	BRASS	NICKEL PLATING	5	PHOSPHOR BRONZE	GOLD PLATING
NO.	MATERIAL	FINISH . REMARKS	NO.	MATERIAL	FINISH . REMARKS

UNITS mm		SCALE 5 : 1	COUNT 	DESCRIPTION OF REVISIONS	DESIGNED	CHECKED	DATE
HIROSE ELECTRIC CO., LTD.				APPROVED : KY. SHIMIZU 09. 04. 03 CHECKED : RZ. KANO 09. 04. 03 DESIGNED : RI. SATO 09. 04. 03 DRAWN : RI. SATO 09. 04. 03	DRAWING NO. EDC4-180319-01 PART NO. MS-147-C(LP)-4 CODE NO. CL358-0182-1-00	1/1	