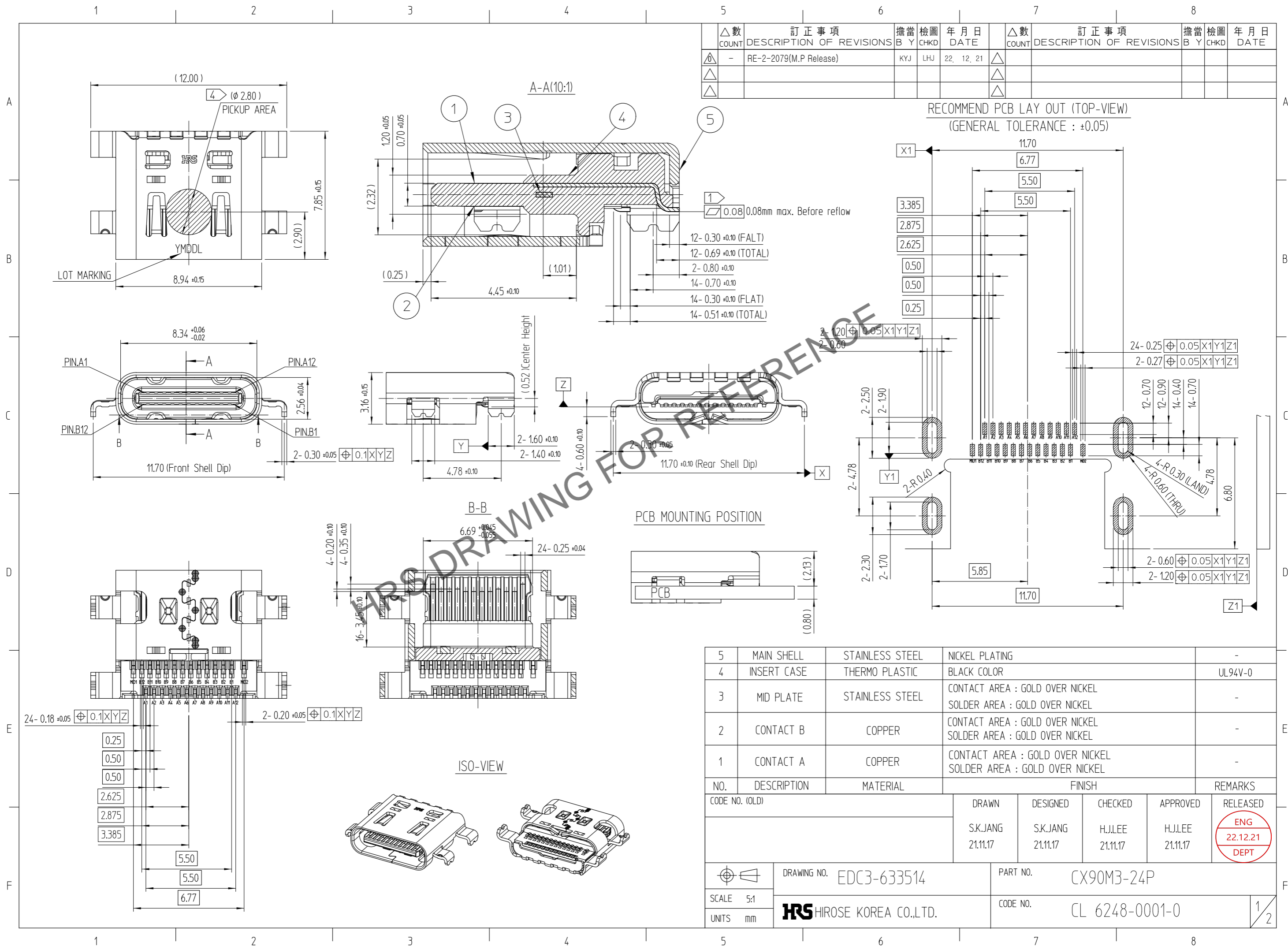


Jan.1.2025 Copyright 2025 HIROSE ELECTRIC CO., LTD. All Rights Reserved.
 In case of consideration for using Automotive equipment / device which demand high reliability, kindly contact our sales window correspondents.



△數 COUNT	訂正事項 DESCRIPTION OF REVISIONS	擔當 B Y	檢圖 CHKD	年月日 DATE	△數 COUNT	訂正事項 DESCRIPTION OF REVISIONS	擔當 B Y	檢圖 CHKD	年月日 DATE
△0	-			22. 12. 21	△				
△					△				
△					△				

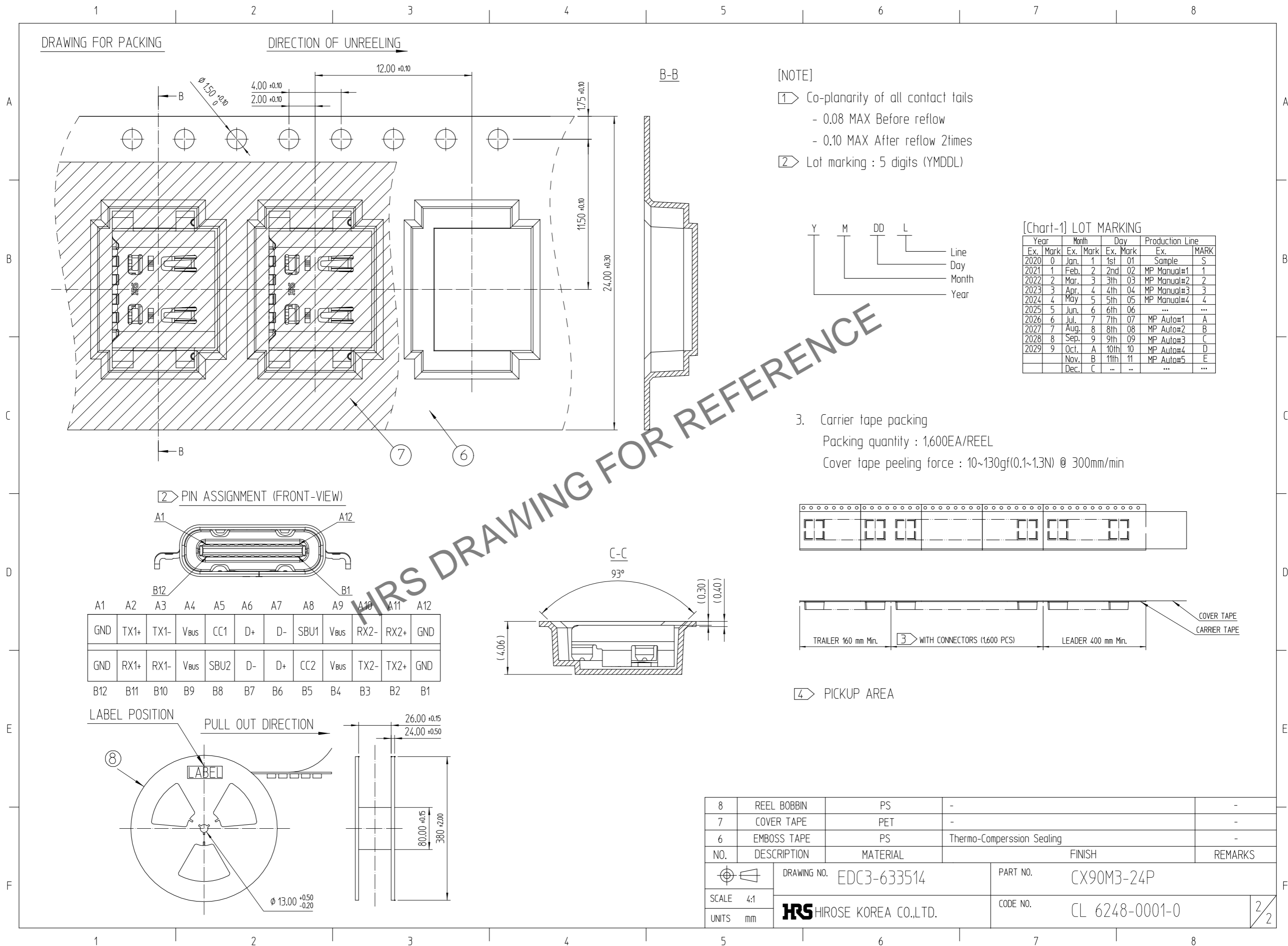
RECOMMEND PCB LAY OUT (TOP-VIEW)
 (GENERAL TOLERANCE : ±0.05)

NO.	DESCRIPTION	MATERIAL	FINISH	REMARKS
5	MAIN SHELL	STAINLESS STEEL	NICKEL PLATING	-
4	INSERT CASE	THERMO PLASTIC	BLACK COLOR	UL94V-0
3	MID PLATE	STAINLESS STEEL	CONTACT AREA : GOLD OVER NICKEL SOLDER AREA : GOLD OVER NICKEL	-
2	CONTACT B	COPPER	CONTACT AREA : GOLD OVER NICKEL SOLDER AREA : GOLD OVER NICKEL	-
1	CONTACT A	COPPER	CONTACT AREA : GOLD OVER NICKEL SOLDER AREA : GOLD OVER NICKEL	-

CODE NO. (OLD)	DRAWN	DESIGNED	CHECKED	APPROVED	RELEASED
	S.K.JANG 21.11.17	S.K.JANG 21.11.17	H.J.LEE 21.11.17	H.J.LEE 21.11.17	ENG 22.12.21 DEPT

DRAWING NO. EDC3-633514	PART NO. CX90M3-24P
SCALE 5:1	CODE NO. CL 6248-0001-0
UNITS mm	HIROSE KOREA CO.,LTD.

Jan.1.2025 Copyright 2025 HIROSE ELECTRIC CO., LTD. All Rights Reserved.
 In case of consideration for using Automotive equipment / device which demand high reliability, kindly contact our sales window correspondents.



8	REEL BOBBIN	PS	-	-
7	COVER TAPE	PET	-	-
6	EMBOSS TAPE	PS	Thermo-Comperssion Sealing	-
NO.	DESCRIPTION	MATERIAL	FINISH	REMARKS
	DRAWING NO.	EDC3-633514		PART NO.
	SCALE	4:1		CODE NO.
	UNITS	mm		
		HIROSE KOREA CO.,LTD.		CL 6248-0001-0
				2/2