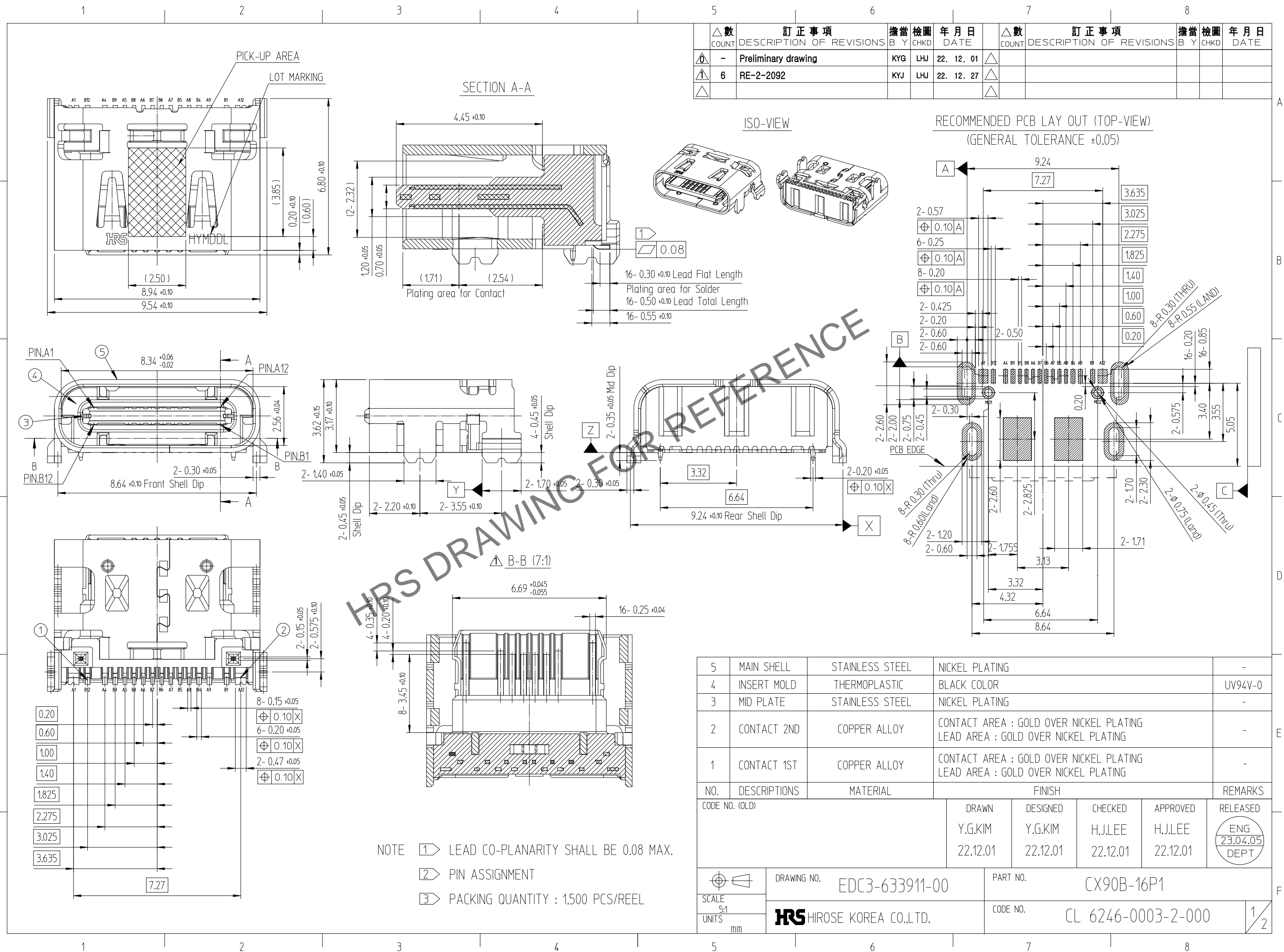


Jan. 1. 2025 Copyright 2025 HIROSE ELECTRIC CO., LTD. All Rights Reserved.
In case of consideration for using Automotive equipment / device which demand high reliability, kindly contact our sales window correspondents.



△數	訂正事項	擔當	檢圖	年月日	△數	訂正事項	擔當	檢圖	年月日
COUNT	DESCRIPTION OF REVISIONS	B	CHKD	DATE	COUNT	DESCRIPTION OF REVISIONS	B	CHKD	DATE
0	Preliminary drawing	KYG	LHJ	22. 12. 01					
6	RE-2-2092	KYJ	LHJ	22. 12. 27					

NO.	DESCRIPTIONS	MATERIAL	FINISH	REMARKS
5	MAIN SHELL	STAINLESS STEEL	NICKEL PLATING	-
4	INSERT MOLD	THERMOPLASTIC	BLACK COLOR	UV94V-0
3	MID PLATE	STAINLESS STEEL	NICKEL PLATING	-
2	CONTACT 2ND	COPPER ALLOY	CONTACT AREA : GOLD OVER NICKEL PLATING LEAD AREA : GOLD OVER NICKEL PLATING	-
1	CONTACT 1ST	COPPER ALLOY	CONTACT AREA : GOLD OVER NICKEL PLATING LEAD AREA : GOLD OVER NICKEL PLATING	-

CODE NO. (OLD)	DRAWN	DESIGNED	CHECKED	APPROVED	RELEASED
	Y.G.KIM	Y.G.KIM	H.J.LEE	H.J.LEE	ENG 23.04.05 DEPT

SCALE 5:1 UNITS mm	DRAWING NO. EDC3-633911-00	PART NO. CX90B-16P1
	HRS HIROSE KOREA CO.,LTD.	CODE NO. CL 6246-0003-2-000

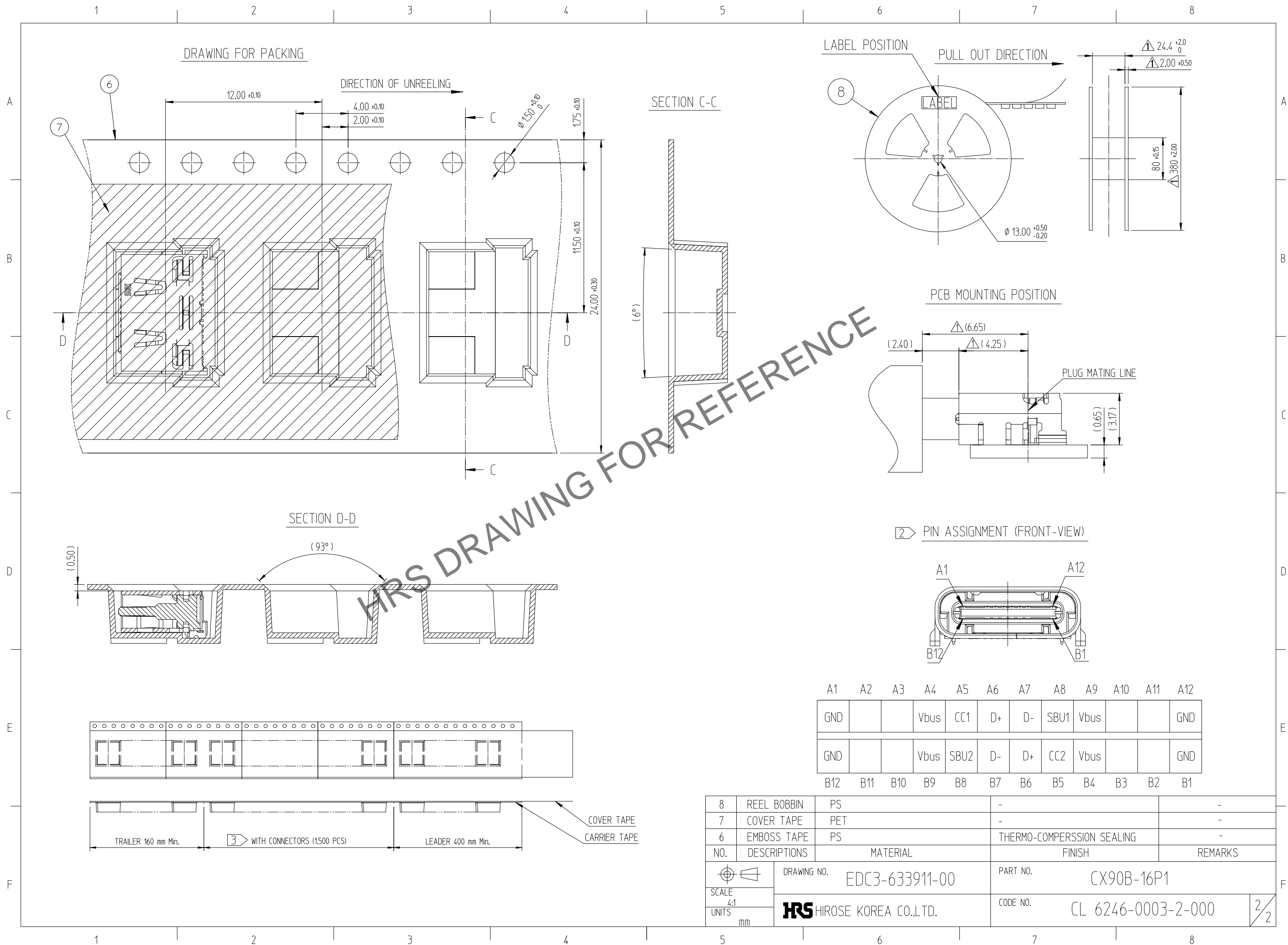
NOTE

1) LEAD CO-PLANARITY SHALL BE 0.08 MAX.

2) PIN ASSIGNMENT

3) PACKING QUANTITY : 1,500 PCS/REEL

Jan. 1. 2025 Copyright 2025 HIROSE ELECTRIC CO., LTD. All Rights Reserved.
 In case of consideration for using Automotive equipment / device which demand high reliability, kindly contact our sales window correspondents.



HRS DRAWING FOR REFERENCE

2 > PIN ASSIGNMENT (FRONT-VIEW)

A1	A2	A3	A4	A5	A6	A7	A8	A9	A10	A11	A12
GND			Vbus	CC1	D+	D-	SBU1	Vbus			GND
GND			Vbus	SBU2	D-	D+	CC2	Vbus			GND
B12	B11	B10	B9	B8	B7	B6	B5	B4	B3	B2	B1

8	REEL BOBBIN	PS	-	-
7	COVER TAPE	PET	-	-
6	EMBOSS TAPE	PS	THERMO-COMPRESSSION SEALING	
NO.	DESCRIPTIONS	MATERIAL	FINISH	REMARKS
DRAWING NO.		EDC3-633911-00		PART NO.
SCALE		4:1		CL 6246-0003-2-000
UNITS		mm		2/2