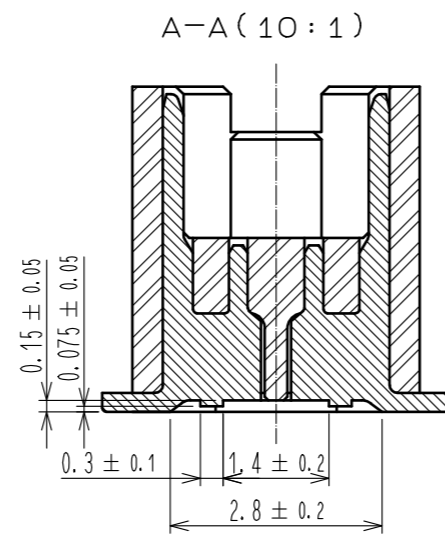
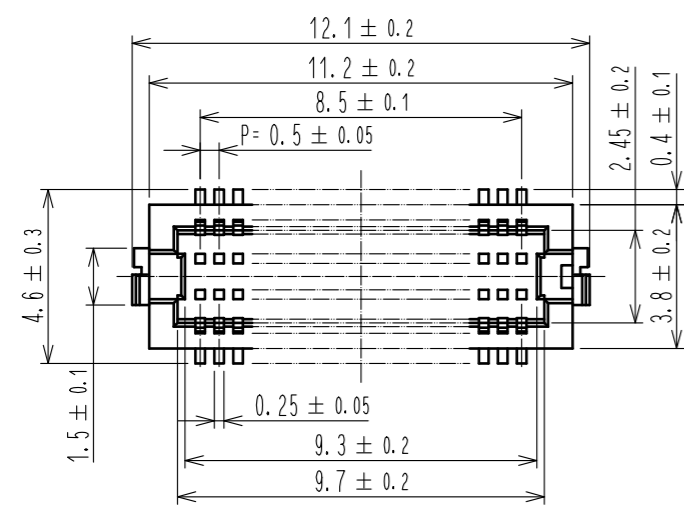
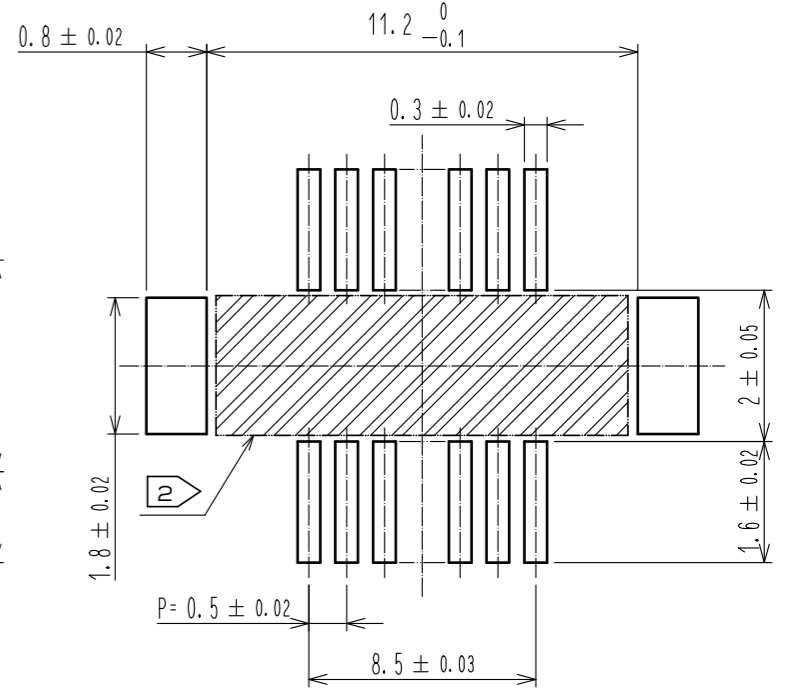
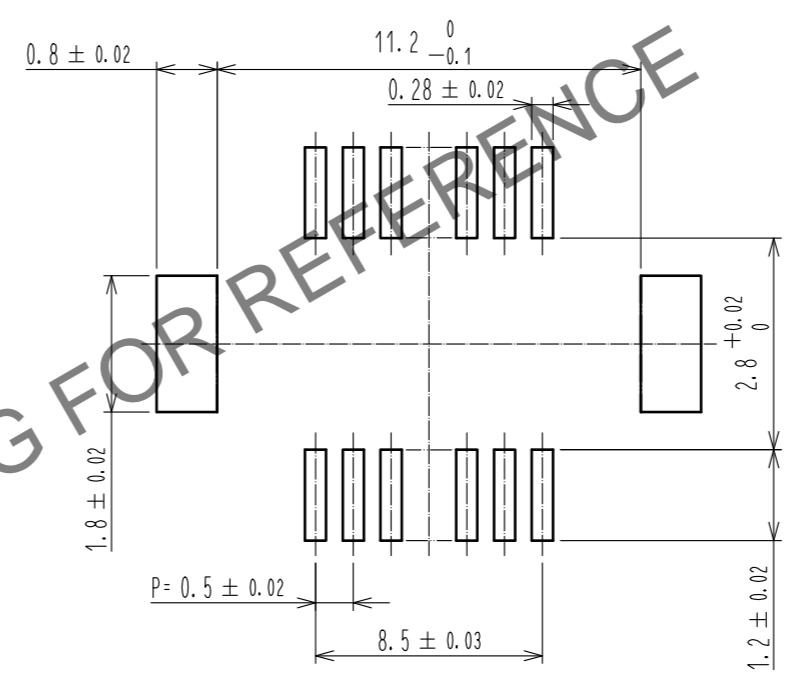


Mar.1.2026 Copyright 2026 HIROSE ELECTRIC CO., LTD. All Rights Reserved.
In case of consideration for using Automotive equipment / device which demand high reliability, kindly contact our sales window correspondents.

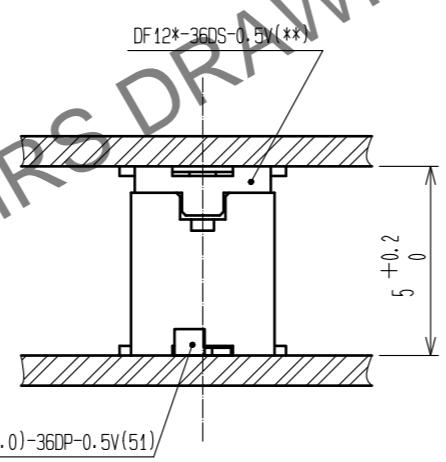
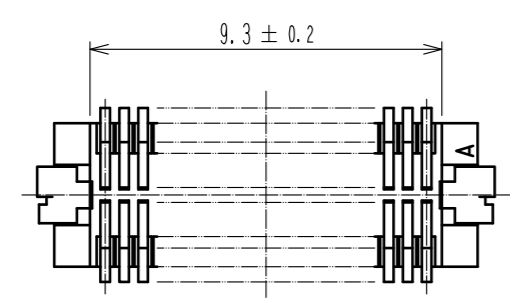
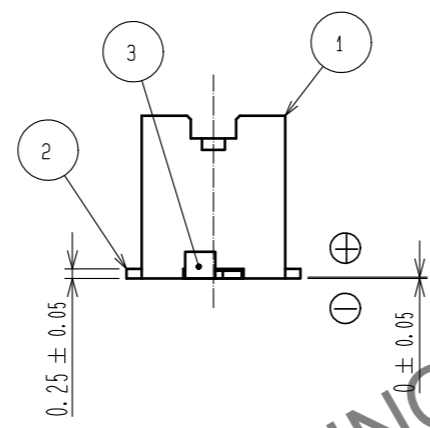
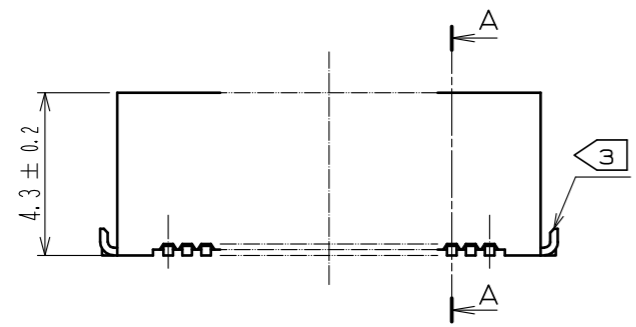


RECOMMEND METAL MASK PATTERN (10:1)

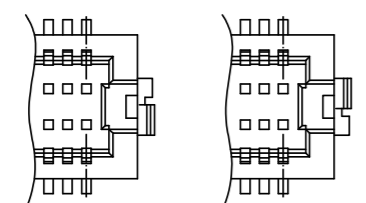
RECOMMENDED PATTERN (10:1)



RECOMMENDED THICKNESS OF SOLDER PASTE : 120 μm

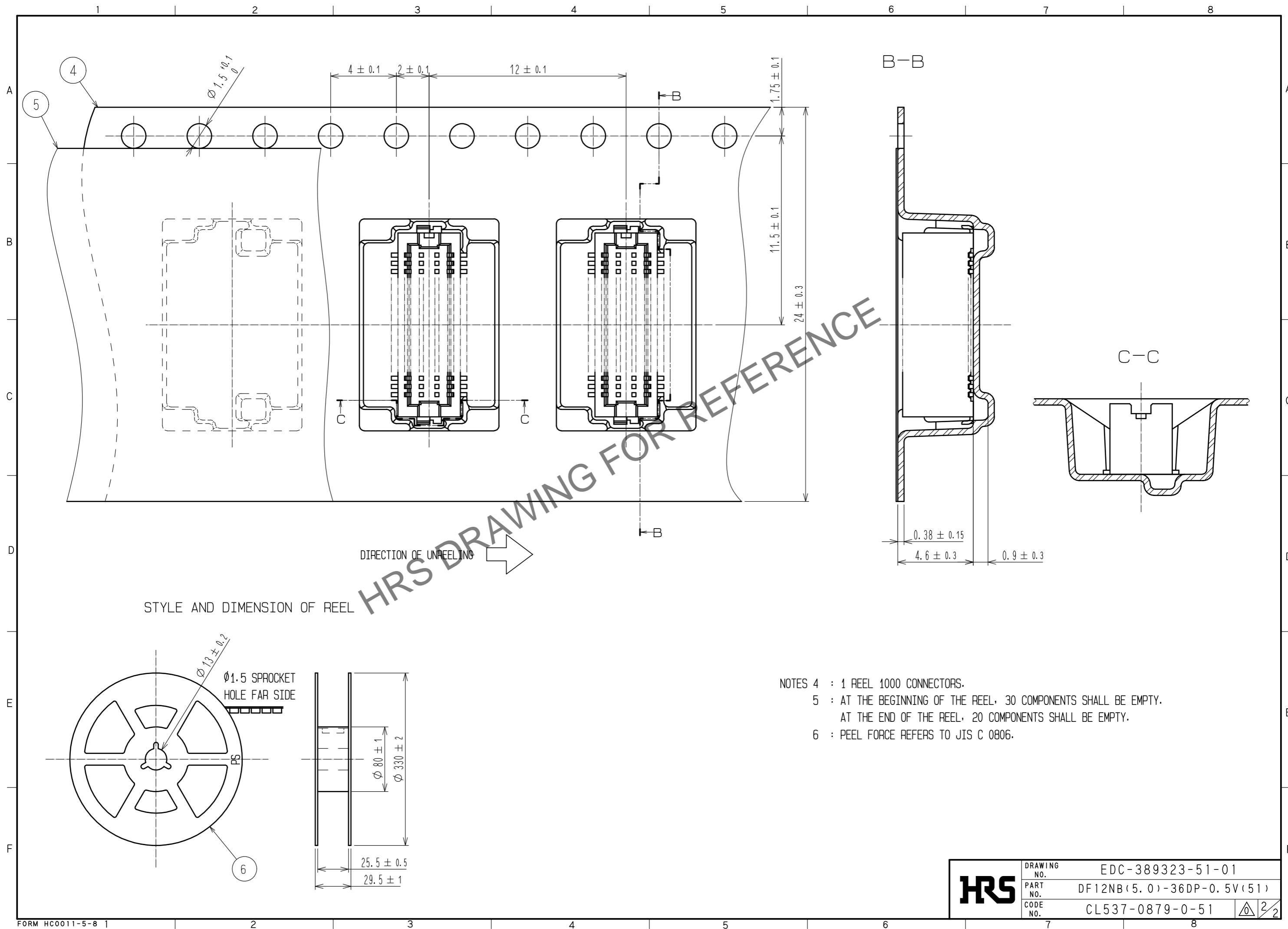


- NOTES 1 : LEAD CO-PLANARITY INCLUDING REINFORCED METAL FITTINGS SHALL BE 0.08 mm MAX.
 2 : IF THERE IS PATTERN ON PART, THERE IS A POSSIBILITY THAT IT WILL MAKE CONTACT WITH THE LEADS.
 3 : REINFORCED METAL FITTINGS AS FOLLOWS.



| | | | | | |
|--------------------------------------|-----------------|--|------------------------------------|--------------------------|--|
| 2 | PHOSPHOR BRONZE | CONTACT AREA:GOLD PLATED 0.2μm min LEAD AREA:GOLD PLATED 0.015μm OTHERS(UNDER PLATING):NICKEL PLATED 2μm min | 6 | PS | BLACK (PLASTIC REEL) |
| 1 | POLYAMIDE | UL94V-0·BLACK | 5 | POLYESTER | CLEAR (COVER TAPE) |
| | | | 4 | PS | CLEAR (EMBOSSED CARRIER TAPE) |
| | | | 3 | BRASS | TIN PLATED 2μm min (UNDER PLATING):NICKEL 1μm min |
| NO. | MATERIAL | FINISH . REMARKS | NO. | MATERIAL | FINISH . REMARKS |
| UNITS mm | | SCALE 5 : 1 | COUNT | DESCRIPTION OF REVISIONS | DESIGNED |
| HRS HIROSE ELECTRIC CO., LTD. | | APPROVED : WR. FUKUCHI 20200512 | DRAWING NO. EDC-389323-51-01 | | |
| | | CHECED : TS. MIYAZAKI 20200512 | PART NO. DF12NB(5.0)-36DP-0.5V(51) | | |
| | | DESIGNED : KT. KUSAKA 20200512 | CODE NO. CL537-0879-0-51 | | |
| | | DRAWN : KT. KUSAKA 20200512 | 1/2 | | |

Mar.1.2026 Copyright 2026 HIROSE ELECTRIC CO., LTD. All Rights Reserved.
 In case of consideration for using Automotive equipment / device which demand high reliability, kindly contact our sales window correspondents.



HRS DRAWING FOR REFERENCE

- NOTES 4 : 1 REEL 1000 CONNECTORS.
 5 : AT THE BEGINNING OF THE REEL, 30 COMPONENTS SHALL BE EMPTY.
 AT THE END OF THE REEL, 20 COMPONENTS SHALL BE EMPTY.
 6 : PEEL FORCE REFERS TO JIS C 0806.

| | | | |
|------------|-------------|---------------------------|-----|
| HRS | DRAWING NO. | EDC-389323-51-01 | 2/2 |
| | PART NO. | DF12NB(5.0)-36DP-0.5V(51) | |
| | CODE NO. | CL537-0879-0-51 | |
| | | | |