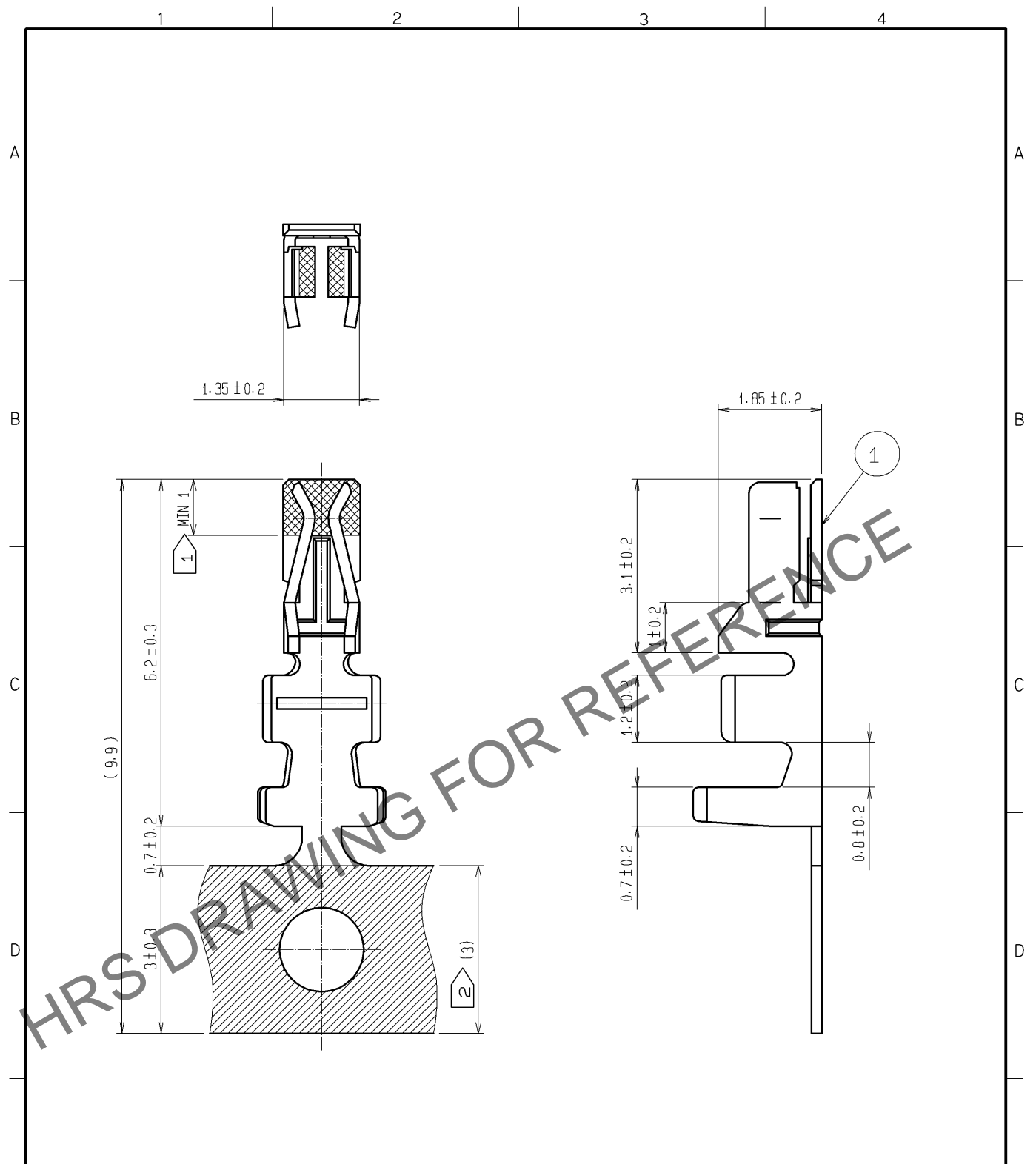


Apr.1.2025 Copyright 2025 HIROSE ELECTRIC CO., LTD. All Rights Reserved.
 In case of consideration for using Automotive equipment / device which demand high reliability, kindly contact our sales window correspondents.



HRS DRAWING FOR REFERENCE

- NOTES
- 1 GOLD PLATE AREA.
 - 2 TIN PLATE AREA.
 - 3 1 REEL : 10000 CONTACTS.

NO.	MATERIAL	FINISH . REMARKS	NO.	MATERIAL	FINISH . REMARKS
1	PHOSPHOR BRONZE	CONTACT AREA:GOLD PLATED 0.2μm min CARRIER AREA:TIN PLATED 1μm min OTHERS:NICKEL PLATED 0.5μm min			

UNITS mm		SCALE 10 : 1	COUNT 	DESCRIPTION OF REVISIONS	DESIGNED	CHECKED	DATE
-------------	--	-----------------	-----------	--------------------------	----------	---------	------

HRS HIROSE ELECTRIC CO., LTD.	APPROVED : TS. SAKATA	09. 11. 17	DRAWING NO.	EDC4-084628-02
	CHECKED : TS. FUKUSHIMA	09. 11. 17	PART NO.	DF11-22SCFA(04)
	DESIGNED : TH. YOSHIZAWA	09. 11. 16	CODE NO.	CL543-0603-5-04
	DRAWN : TH. YOSHIZAWA	09. 11. 16		1/1