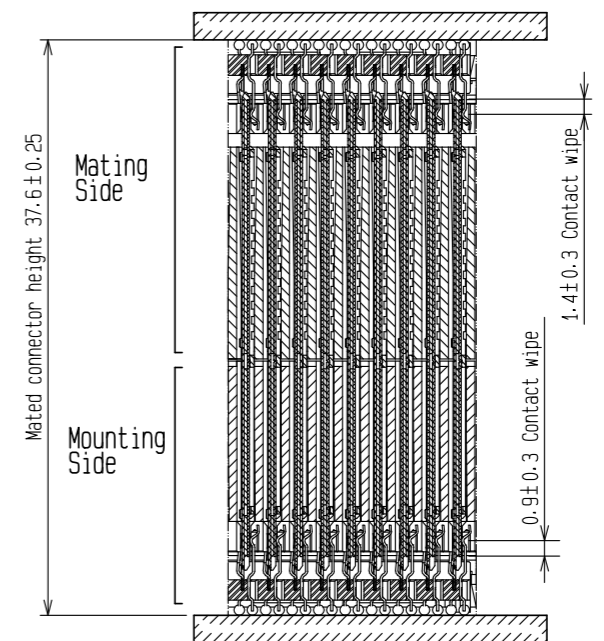
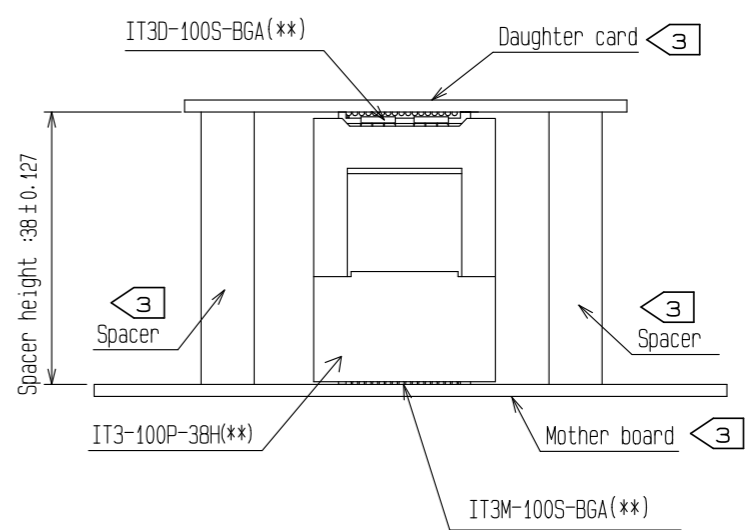
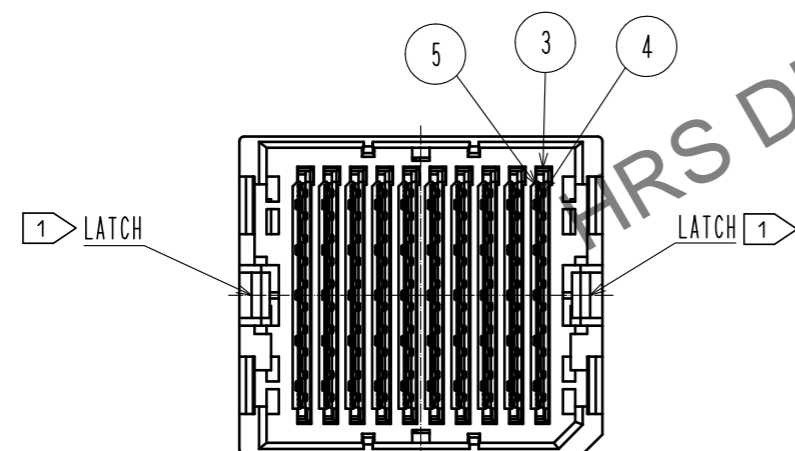
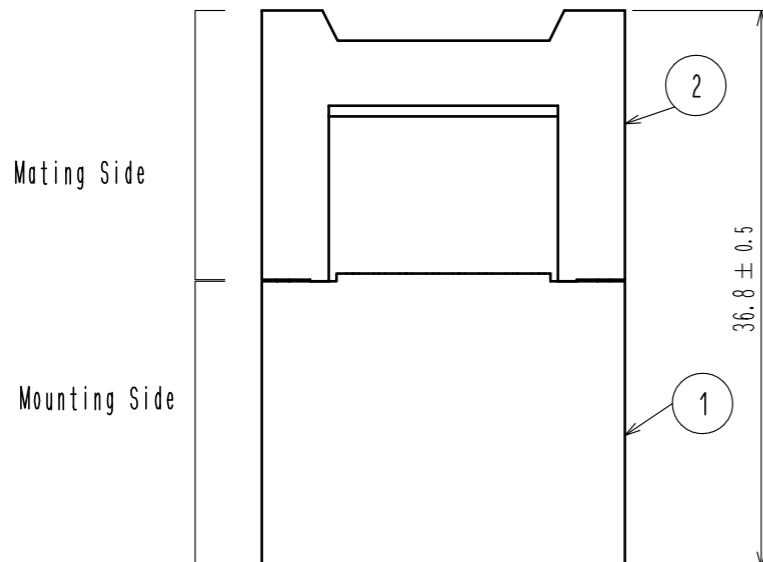
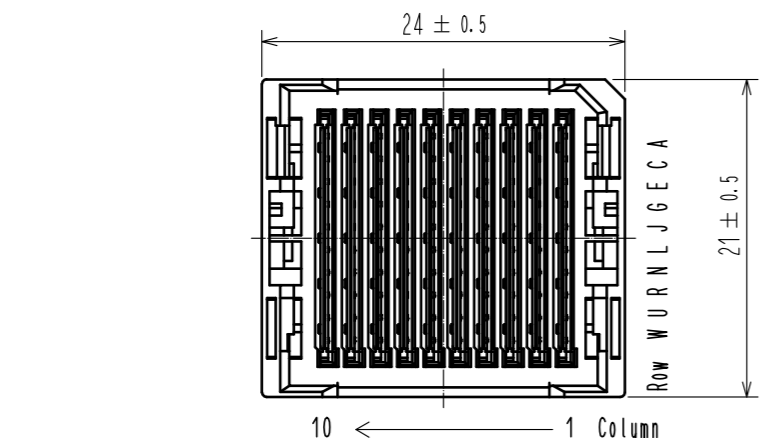


May.1.2024 Copyright 2024 HIROSE ELECTRIC CO., LTD. All Rights Reserved.
In case of consideration for using Automotive equipment / device which demand high reliability, kindly contact our sales window correspondents.



- NOTE.
- 1 Mounting side is mated with the receptacle:IT3M-100S-BGA(**) and fixed with the latch.
 - 2 Lot No. shall be marked on the indicated position.
 - 3 The indicated mother board and daughter card shall be fastened to the additional reinforcements to prevent the stress on IT3*-100S-BGA(**) solder joints.
 - 4. Please refer to HIROSE document: ETAD-F0347 'IT3 design guideline'.
 - 5. This product consists of 100 signal lines and 90 ground lines.
 - 6. 25pcs of this products are packed in a soft tray.
 - 7. Standard package of 50pcs are packaged in a carton box.

3	LCP	BLACK, UL94V-0						
2	PBT	GRAY, UL94V-0		5	Copper Alloy	CONTACT AREA:NICKEL(1.5μm)+GOLD(0.76μm)		
1	PBT	BLACK, UL94V-0		4	Copper Alloy	CONTACT AREA:NICKEL(1.5μm)+GOLD(0.76μm)		
NO.		MATERIAL		FINISH . REMARKS				
UNITS mm				SCALE 2 : 1				
				COUNT				
				DESCRIPTION OF REVISIONS				
				DESIGNED				
				CHECKED				
				DATE				
HIROSE ELECTRIC CO., LTD.		APPROVED :TM. MATSUO		17. 05. 30		DRAWING NO.	EDC-325227-03-00	
		CHECKED :MK. EZAKI		17. 05. 30		PART NO.	IT3-100P-38H(03)	
		DESIGNED :KT. AIZAWA		17. 05. 30		CODE NO.	CL636-0200-9-03	
		DRAWN :KT. AIZAWA		17. 05. 30				1/1