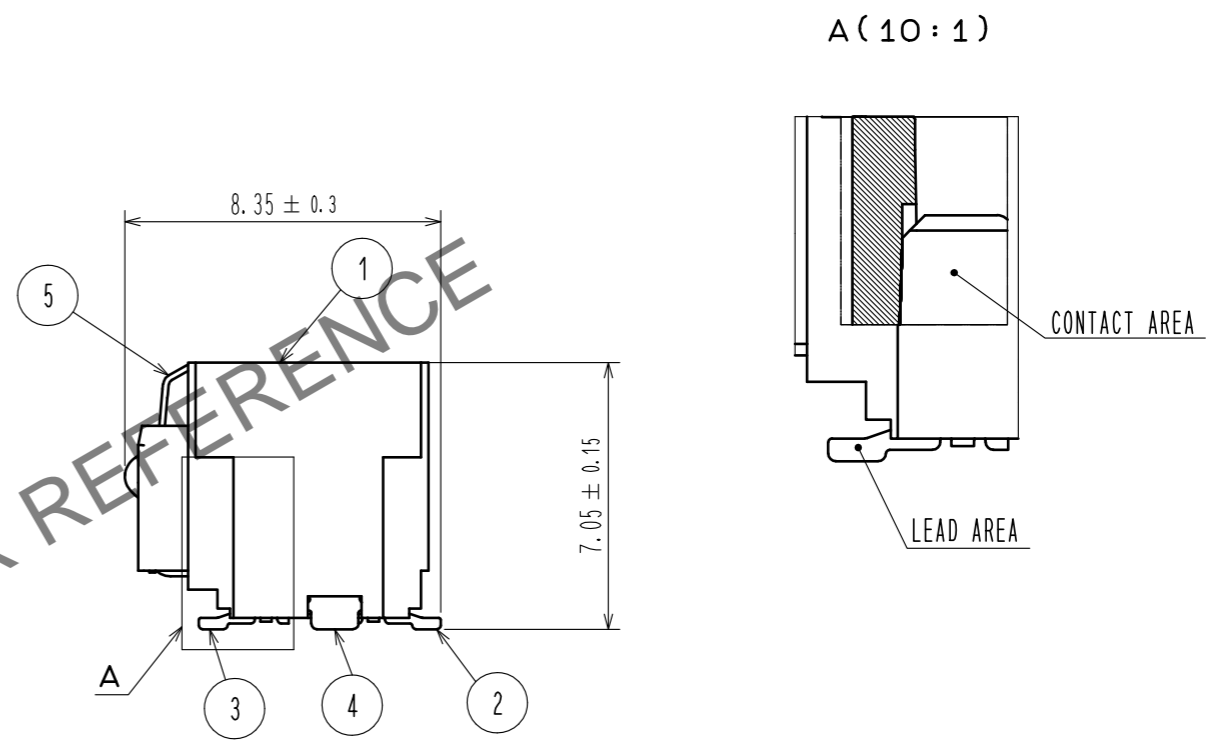
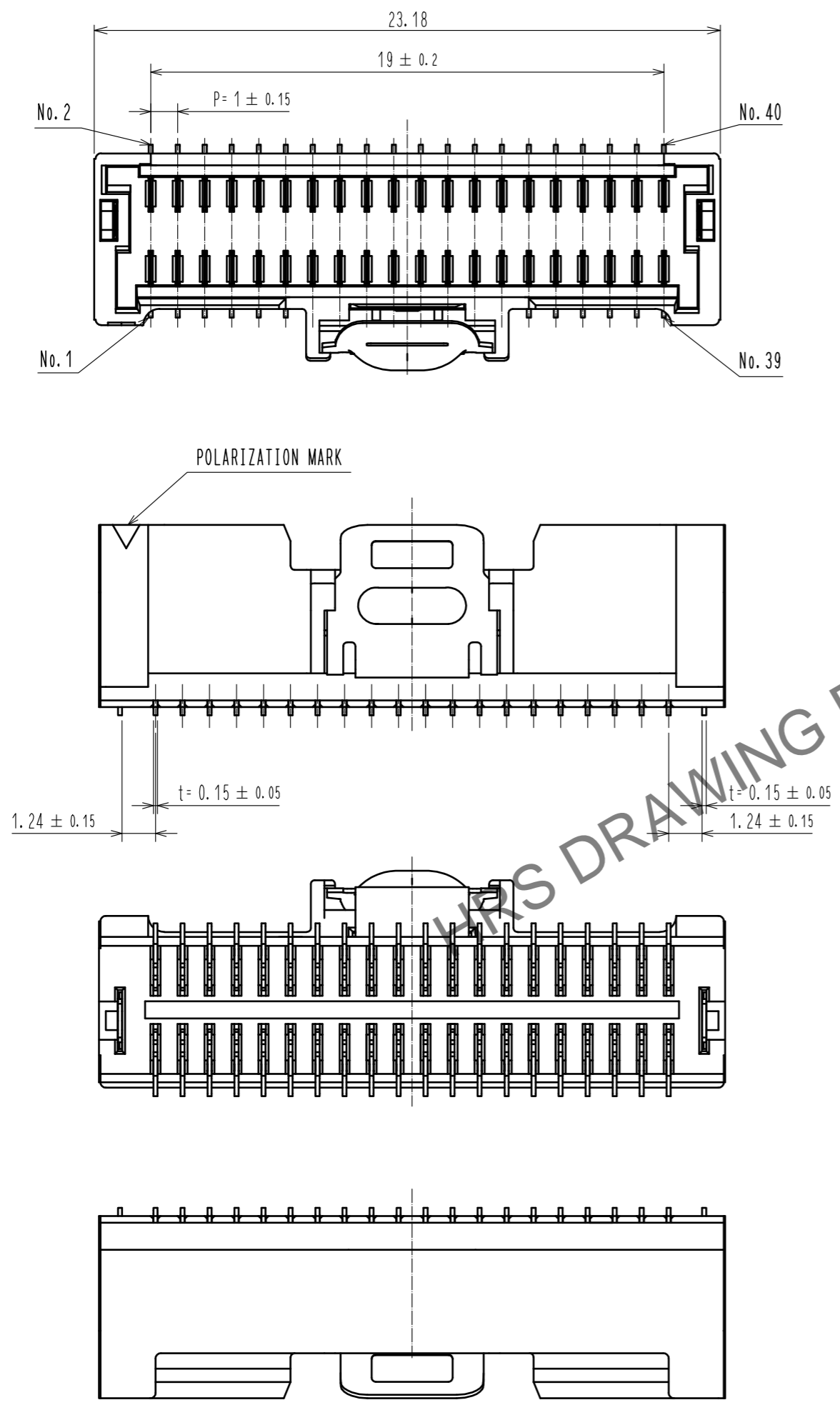


Jan.1.2025 Copyright 2025 HIROSE ELECTRIC CO., LTD. All Rights Reserved.
In case of consideration for using Automotive equipment / device which demand high reliability, kindly contact our sales window correspondents.

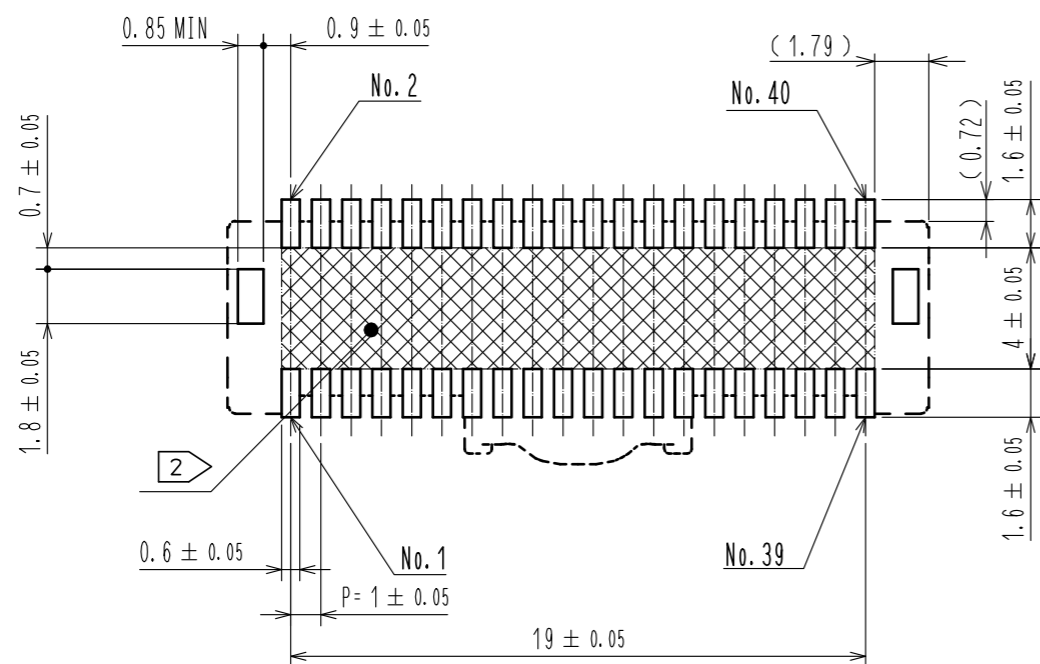


- NOTES
1. LEAD CO-PLANARITY SHALL BE 0.1 mm MAX.
 2. AREA INDICATED MUST BE FREE OF CONDUCTIVE TRACES OR THE CONDUCTIVE TRACES MUST BE COVERED BY RESIST FILM.
 3. PLEASE CONSULT HIROSE WHEN THE PRODUCT IS MOUNTED TO FPC.

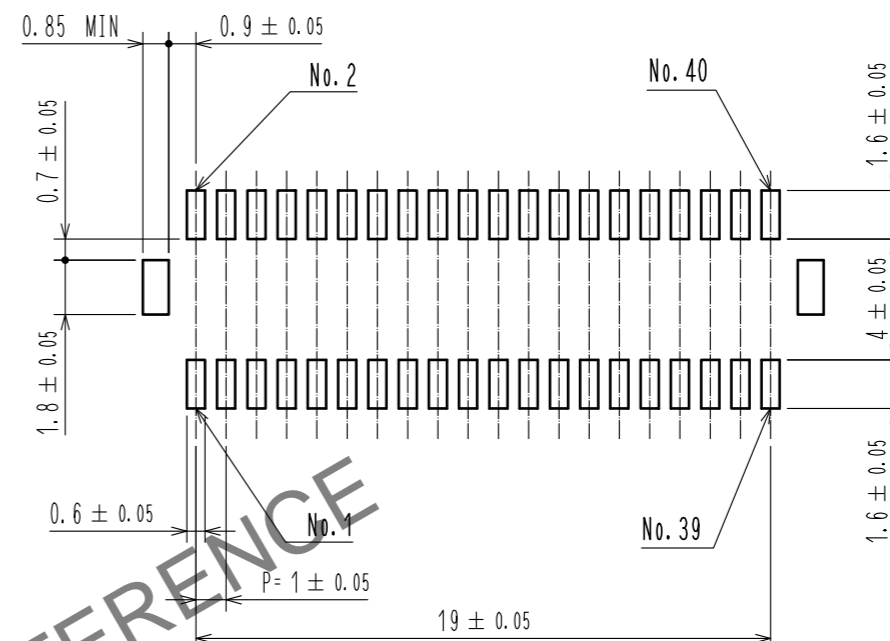
3	BRASS	CONTACT AREA : Au PLATING 0.05μm MIN.	9	POLYAMIDE	VACUUM CAP		
		LEAD AREA : Au PLATING 0.05μm MIN.	8	PS	REEL, BLACK		
2	BRASS	UNDERPLATING : Ni PLATING 1μm MIN.	7	POLYESTER	CLEAR		
		CONTACT AREA : Au PLATING 0.05μm MIN.	6	PS	CLEAR		
1	LCP	LEAD AREA : Au PLATING 0.05μm MIN.	5	STAINLESS STEEL	-		
		UNDERPLATING : Ni PLATING 1μm MIN.	4	BRASS	SURFACE : Sn PLATING 1μm MIN. UNDERPLATING : Ni PLATING 0.5μm MIN.		
NO.	MATERIAL	FINISH . REMARKS	NO.	MATERIAL	FINISH . REMARKS		
UNITS mm		SCALE FREE	COUNT 1	DESCRIPTION OF REVISIONS DIS-H-00005059	DESIGNED HT. SATO	CHECKED HS. OKAWA	DATE 20190711
HRS HIROSE ELECTRIC CO., LTD.		APPROVED : KI. AKIYAMA	20120608	DRAWING NO. EDC-324909-52-03			
		CHECED : HK. UMEHARA	20120608	PART NO. DF50-40DP-1V(52)			
		DESIGNED : TT. OHSAKO	20100514	CODE NO. CL665-0005-9-52			
		DRAWN : TT. OHSAKO	20100514				

Jan.1.2025 Copyright 2025 HIROSE ELECTRIC CO., LTD. All Rights Reserved.
 In case of consideration for using Automotive equipment / device which demand high reliability, kindly contact our sales window correspondents.

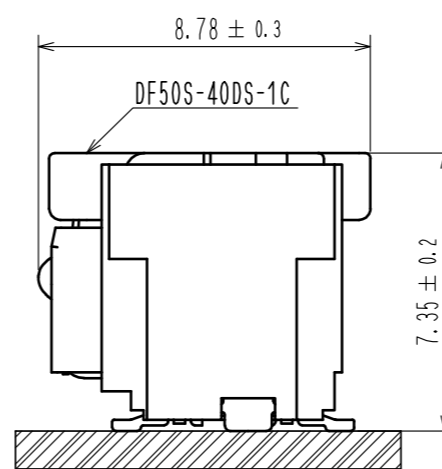
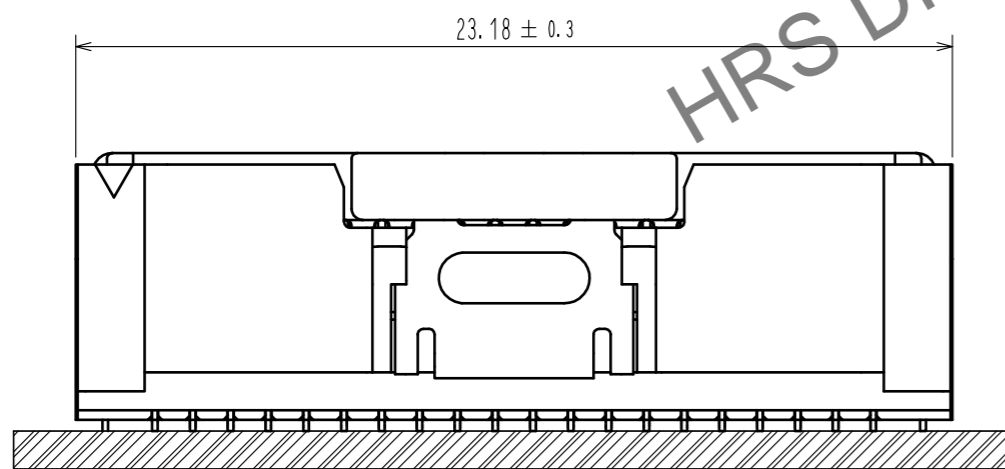
RECOMMENDED PCB LAYOUT
 (MOUNTING SURFACE SIDE) (FREE)



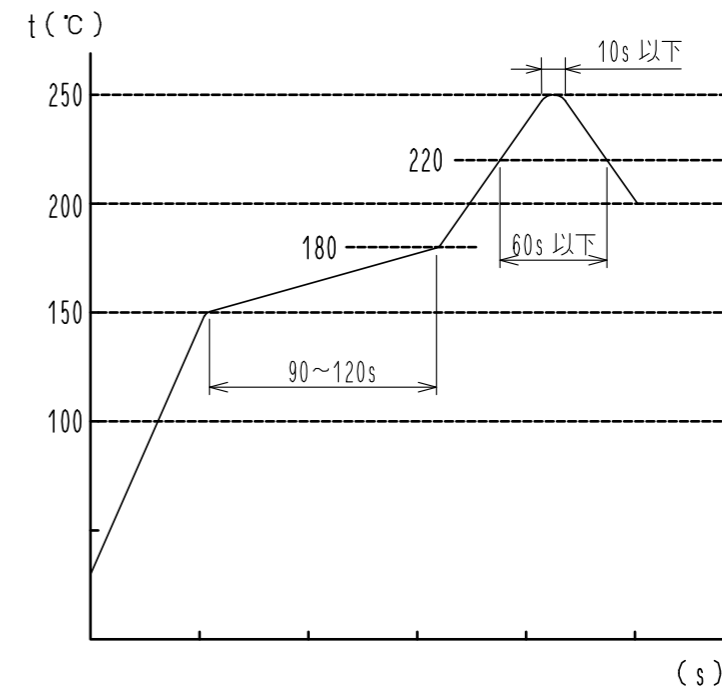
RECOMMENDED METAL MASK (FREE)
 THICKNESS : 0.1mm



MATING FIGURE (5 : 1)



REFLOW TEMPERATURE PROFILE
 USING LEAD-FREE SOLDER PASTE(REFERENCE)

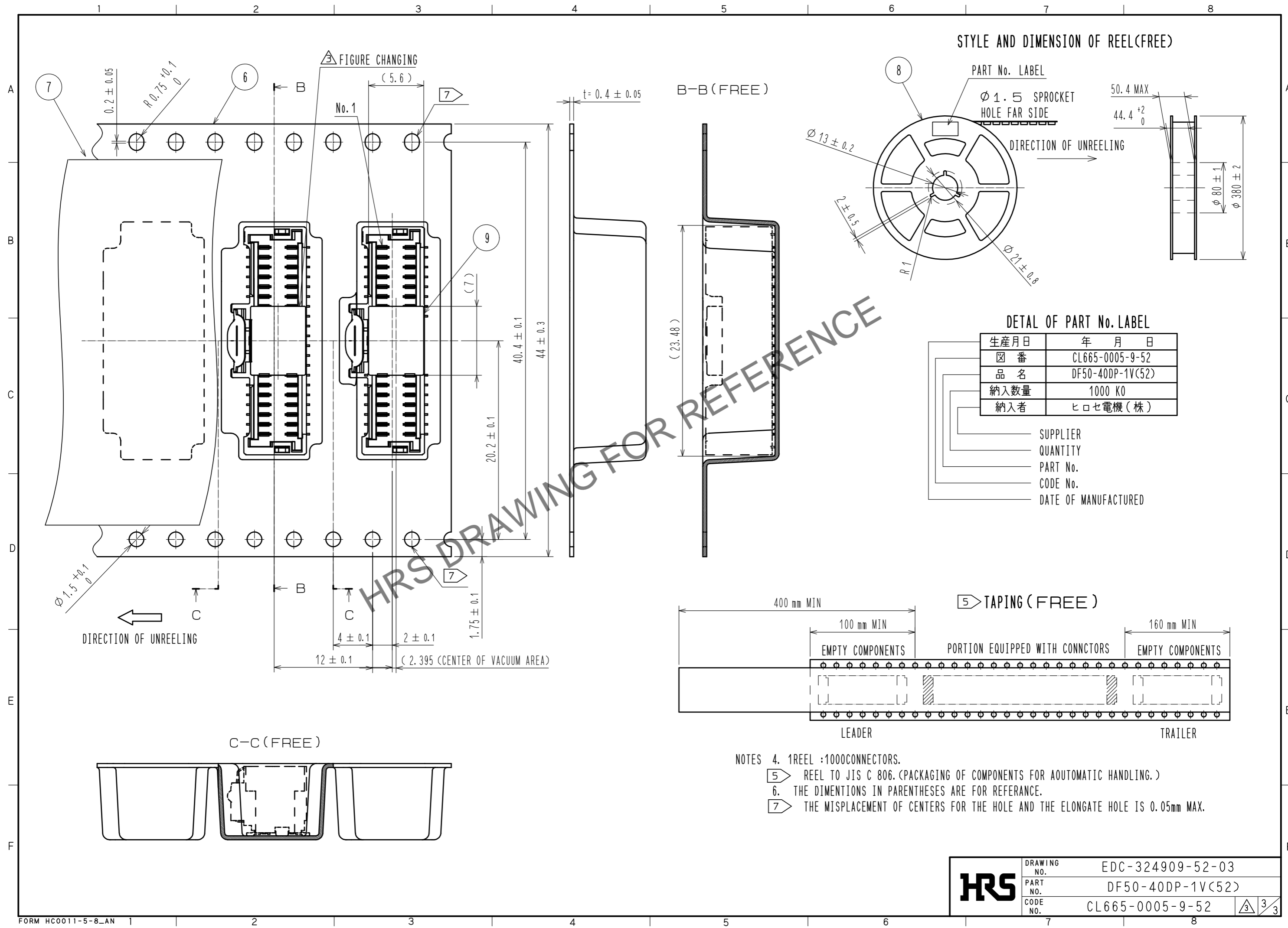


NUMBER OF REFLOW CYCLES : 2 CYCLES MAX.
 THE TEMPERATURE OF THIS PROFILE IS MASURED ON THE LEAD TERMINAL.

WE RECOMMEND PERFORMING AN EVALUATION UNDER THE MOUNTING
 CONDITIONS YOU WILL BE USING BECAUSE IT COULD BE AFFECTED
 BY ANY CONDITION:TYPE OF SOLDER PASTE, SIZE OF PCB, MOUNTING
 METAL etc.

HRS	DRAWING NO.	EDC-324909-52-03
	PART NO.	DF50-40DP-1V(52)
	CODE NO.	CL665-0005-9-52
		3/2

Jan.1.2025 Copyright 2025 HIROSE ELECTRIC CO., LTD. All Rights Reserved.
 In case of consideration for using Automotive equipment / device which demand high reliability, kindly contact our sales window correspondents.



HRS	DRAWING NO.	EDC-324909-52-03
	PART NO.	DF50-40DP-1V(52)
	CODE NO.	CL665-0005-9-52
		3/3