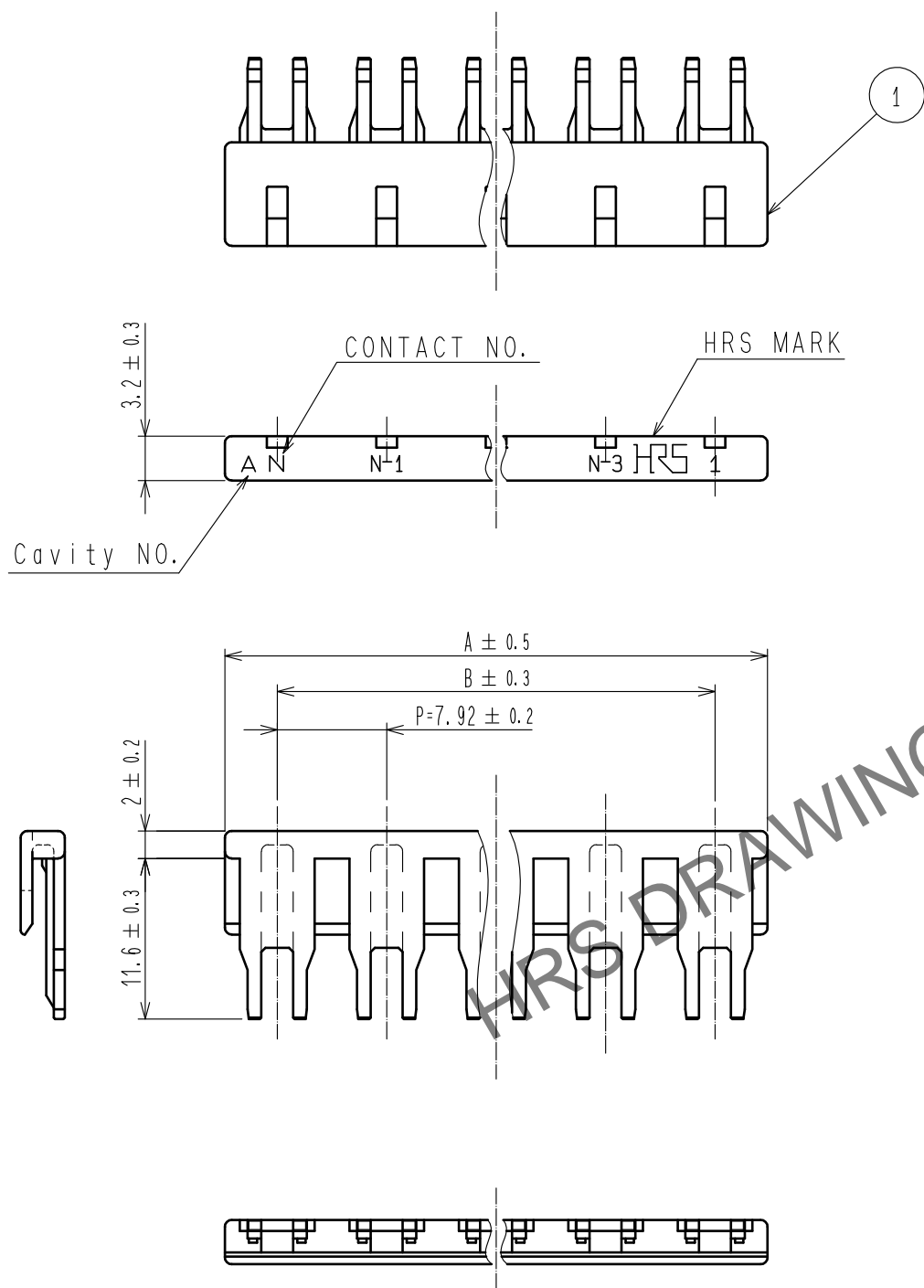






Apr.1.2024 Copyright 2024 HIROSE ELECTRIC CO., LTD. All Rights Reserved.
In case of consideration for using Automotive equipment / device which demand high reliability, kindly contact our sales window correspondents.



PART No.	CODE No.	NUMBER OF CONTACT	A	B
DF22B/C-2RS/P-7.92	CL680-1200-2-00	2	15.5	7.92
DF22B/C-3RS/P-7.92	CL680-1201-5-00	3	23.42	15.84
DF22B/C-4RS/P-7.92	CL680-1202-8-00	4	31.34	23.76
DF22B/C-5RS/P-7.92	CL680-1203-0-00	5	39.26	31.68

Note 1 : 100 retainers are in one pack.

△ (Delete)

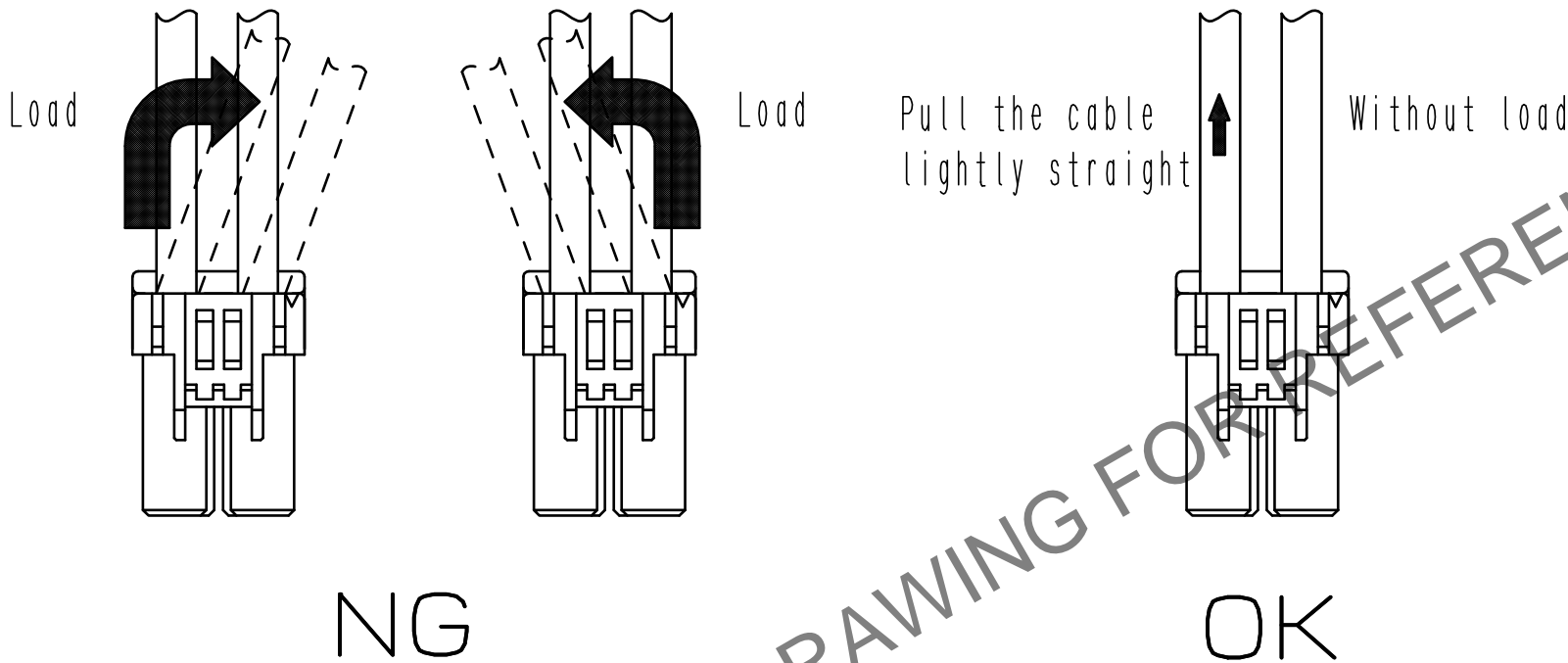
				1	POLYAMIDE		BLACK, UL94V-0		
NO.	MATERIAL		FINISH . REMARKS		NO.	MATERIAL		FINISH . REMARKS	
UNITS mm		SCALE 2 : 1		COUNT 1	DESCRIPTION OF REVISIONS DIS-H-00012899		DESIGNED TS. KUMAZAWA	CHECKED SZ. ONO	DATE 20220228
 HIROSE ELECTRIC CO., LTD.			APPROVED : KI. AKIYAMA		20140918	DRAWING NO.	EDC3-164777-01		
			CHECKED : TS. FUKUSHIMA		20140917	PART NO.	DF22B/C-*RS/P-7. 92		
			DESIGNED : HT. SATO		20140917	CODE NO.	CL680-		
			DRAWN : MI. SAKIMURA		20140912				
				1	3				

Apr.1.2024 Copyright 2024 HIROSE ELECTRIC CO., LTD. All Rights Reserved.
In case of consideration for using Automotive equipment / device which demand high reliability, kindly contact our sales window correspondents.

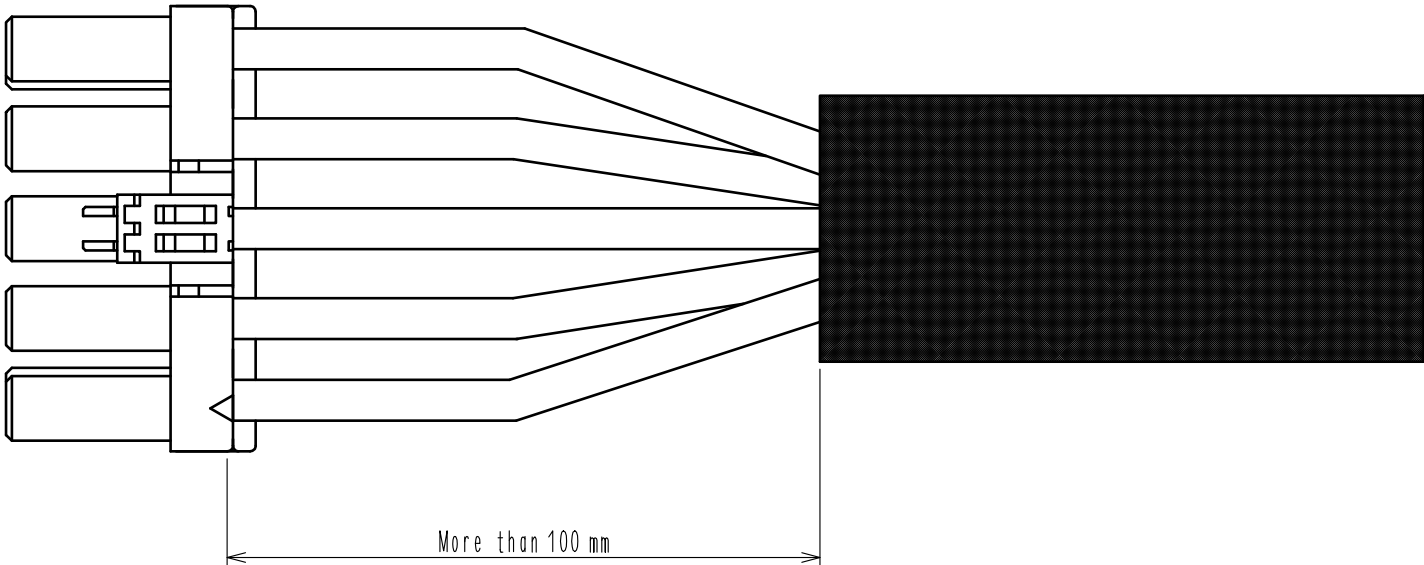
▣Precautions

◆Notification for harness assembly

- 1) When inserting the crimping terminal to the crimping socket, please do not tilt the crimping terminal or twist the cable.
Insertion at tilted angles or twisting the cable may cause deformation of the crimping terminal or crimping socket.
- 2) After inserting the crimping terminal to the crimping socket, please make sure that the lance has been hooked with pulling the cable lightly.
When checking the hook, please avoid bending the cable for preventing terminal drop-off.



- 3) Bundle cables/Cabtyre Cables
Recommend bundle and strip position of cables are 100 mm or more.
Bunding close to the connectors may cause terminal drop-off, breaking cables and unstable connection.



HRS	DRAWING NO.	EDC3-164777-01		
	PART NO.	DF22B/C-*RS/P-7. 92		
	CODE NO.	CL680-	2	3

Apr.1.2024 Copyright 2024 HIROSE ELECTRIC CO., LTD. All Rights Reserved.
In case of consideration for using Automotive equipment / device which demand high reliability, kindly contact our sales window correspondents.

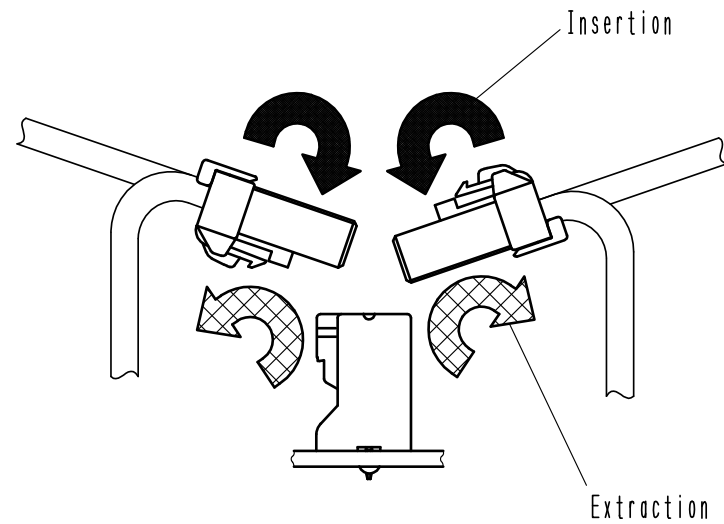
▣Precautions

◆Notification for Insertion Extraction

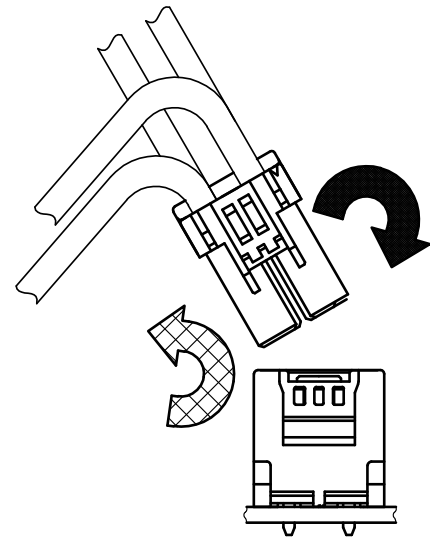
- 1) Please insert(extract) the crimping socket straight to the mating connector.
Insertion(extraction) at tilted angles applies load concentration to the connetor end and may cause deformation (at connection area, socket and header case, etc). There is firing risk using this kind of defomed connector.



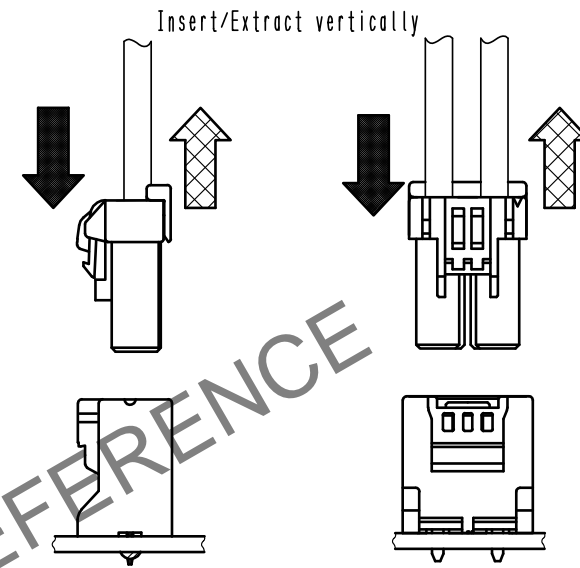
Insertion(Extraction)



NG



NG



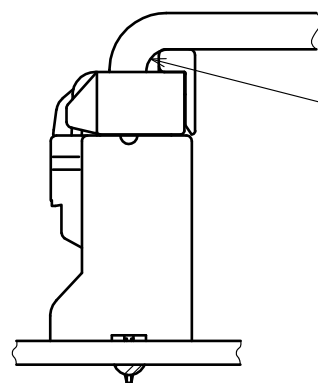
OK

- 2) When it is hard to extract, please lightly insert the connector beforehand and then pull it with releasing the lock.
Forced extraction has a risk of connector breakage.

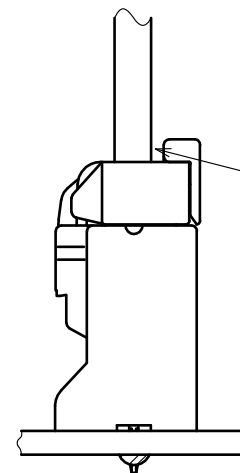
◆Notification of wiring



- 1) When using a thick cable, short cable length and bending close to the connector end, these load concentration may cause deformation.
Please note that there is firing risk using deformed connector.
When installing, please refrain from stress concentration such as cable bending close to the connector end or cable twisting.



NG



OK

HRS

DRAWING NO.	EDC3-164777-01
PART NO.	DF22B/C-*RS/P-7.92
CODE NO.	CL680-

2/3