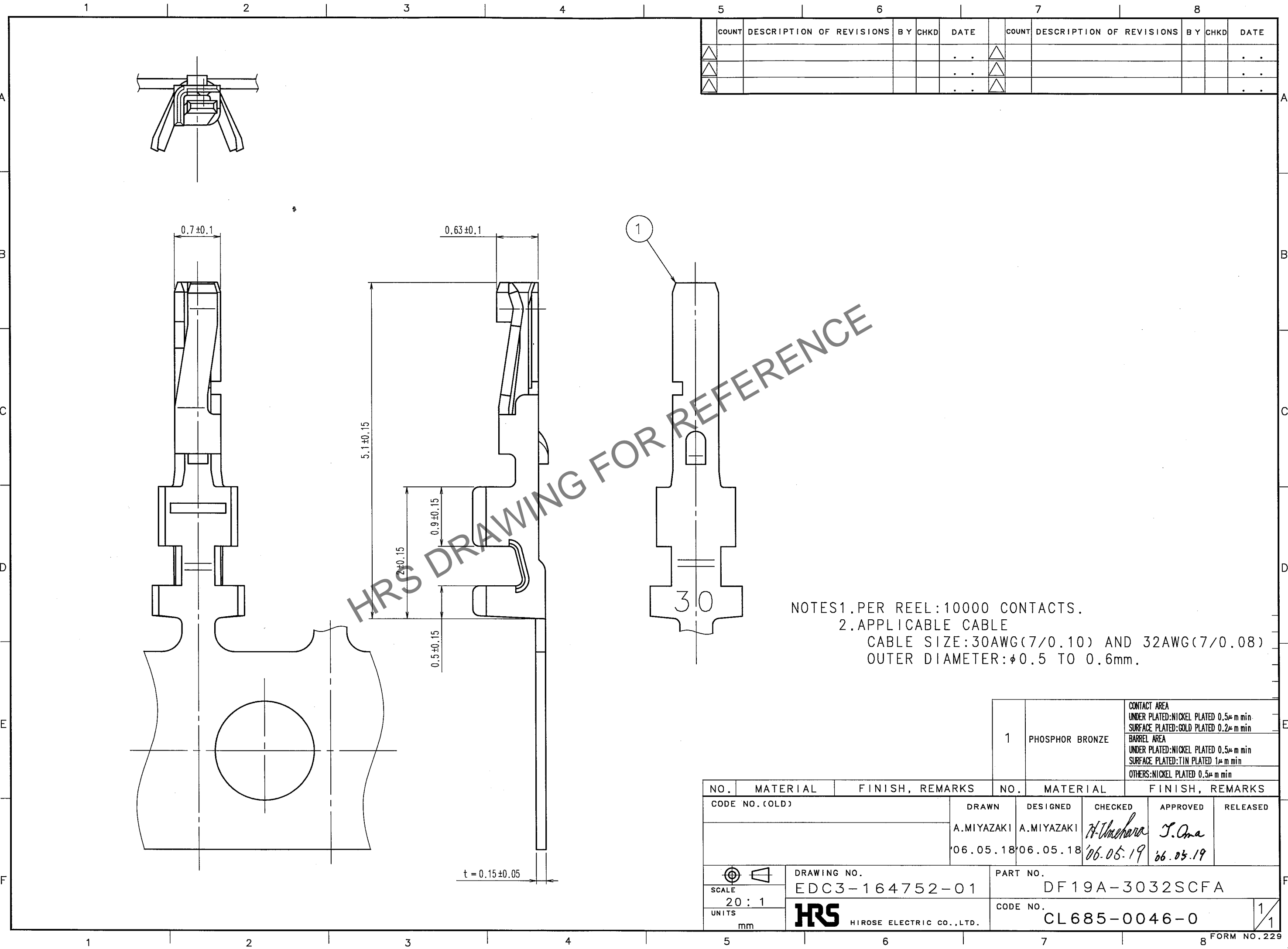


Apr.1.2024 Copyright 2024 HIROSE ELECTRIC CO., LTD. All Rights Reserved.
In case of consideration for using Automotive equipment / device which demand high reliability, kindly contact our sales window correspondents.



5				6				7				8			
COUNT	DESCRIPTION OF REVISIONS	BY	CHKD	DATE	COUNT	DESCRIPTION OF REVISIONS	BY	CHKD	DATE	COUNT	DESCRIPTION OF REVISIONS	BY	CHKD	DATE	
△				..	△				..	△				..	
△				..	△				..	△				..	
△				..	△				..	△				..	

HRS DRAWING FOR REFERENCE

NOTES
 1.PER REEL:10000 CONTACTS.
 2.APPLICABLE CABLE
 CABLE SIZE:30AWG(7/0.10) AND 32AWG(7/0.08)
 OUTER DIAMETER:φ0.5 TO 0.6mm.

TO

1	PHOSPHOR BRONZE	CONTACT AREA UNDER PLATED-NICKEL PLATED 0.5μm min SURFACE PLATED-GOLD PLATED 0.2μm min
		BARREL AREA UNDER PLATED-NICKEL PLATED 0.5μm min SURFACE PLATED:TIN PLATED 1μm min
		OTHERS:NICKEL PLATED 0.5μm min

NO.	MATERIAL	FINISH, REMARKS	NO.	MATERIAL	FINISH, REMARKS

CODE NO. (OLD)	DRAWN	DESIGNED	CHECKED	APPROVED	RELEASED
	A.MIYAZAKI	A.MIYAZAKI	H. Umehara	T. Oma	
	'06.05.18	'06.05.18	'06.05.19	'06.05.19	

DRAWING NO. EDC3-164752-01 SCALE 20:1 UNITS mm	PART NO. DF19A-3032SCFA CODE NO. CL685-0046-0	1/1
---	--	-----